



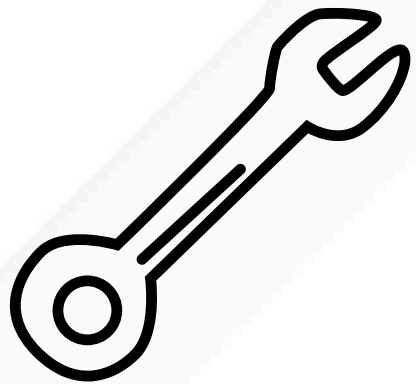
# FINANCES & FACILITIES

Moving Forward

Board of Education Meeting  
December 18, 2025

# REAFFIRMING OUR VISION AND SHARED COMMITMENTS...

COMMITTED  
TO MEETING  
THE NEEDS OF  
ALL STUDENTS



COMMITTED TO  
FINDING A  
SOLUTION FOR  
FULL-DAY  
KINDERGARTEN  
THAT IS IN THE  
BEST INTEREST  
OF OUR  
SCHOOL  
COMMUNITY  
FOR THE LONG-  
TERM.

COMMITTED TO  
ADDRESSING  
OUR ONGOING  
PROGRAMMING,  
SAFETY, AND  
FACILITY NEEDS.

COMMITTED TO  
FISCAL  
RESPONSIBILITY  
AND THE  
EFFECTIVE  
STEWARDSHIP  
OF OUR  
COMMUNITIES'  
RESOURCES IN  
BOTH THE  
SHORT AND  
LONG-TERMS.





# FACILITIES BUDGET STATUS

## FY 2026 & 2027

Bond Proceeds	\$ 16,500,000
Interest Earnings	\$ 840,000
Sen. Walker Grant	\$ 525,000
ISBE Grant SMPG	\$ 100,000
Fund 20 Summer	\$ 200,000
Total:	\$ 18,165,000



# FACILITIES BUDGET PROJECTION

MacArthur WSD	\$ 2,565,500
Eisenhower Addition	\$ 14,218,750
Fund 20 Summer	\$ 250,000
Hold for Future Projects	\$ 1,130,750
Total:	\$ 18,165,000

**WINDOW,  
SIDING, AND  
DOOR  
REPLACEMENTS  
AT MACARTHUR**



# MACARTHUR WINDOWS & SIDING TIMELINE:

- **2021-22** Initial assessment, design and project development (MacArthur, Grodsky, Sullivan, & Ross)
- **2022-25** MacArthur deferred due to limited funding; prioritized need at Grodsky, Sullivan & Ross.
- **Fall 2025** – Review and update MacArthur Windows, Siding, and Doors Project design
- **November 2025** – Drawings Released to FH Paschen
- **December 2025** – BOE to Award Job Order Contract
- **June 2026** – Construction begins at MacArthur
- **August 2026** – MacArthur Project completed





# CURRENT MACARTHUR RENDERINGS



NEW PANELING REPLACES OLD PANELING ON SCHOOL ELEVATION



# Further Reductions or Eliminations



- Main entry interior, repair and paint
- Cafeteria interior vestibule
- Cafeteria exterior door
- Removal and replacement of louvers





## ALTERNATE #1:

### Curtain Wall in Gym – Window Addition

- Preexisting opening
- Would provide natural light in gym
- “Frosted” effect and safety glass
- Add \$52,500







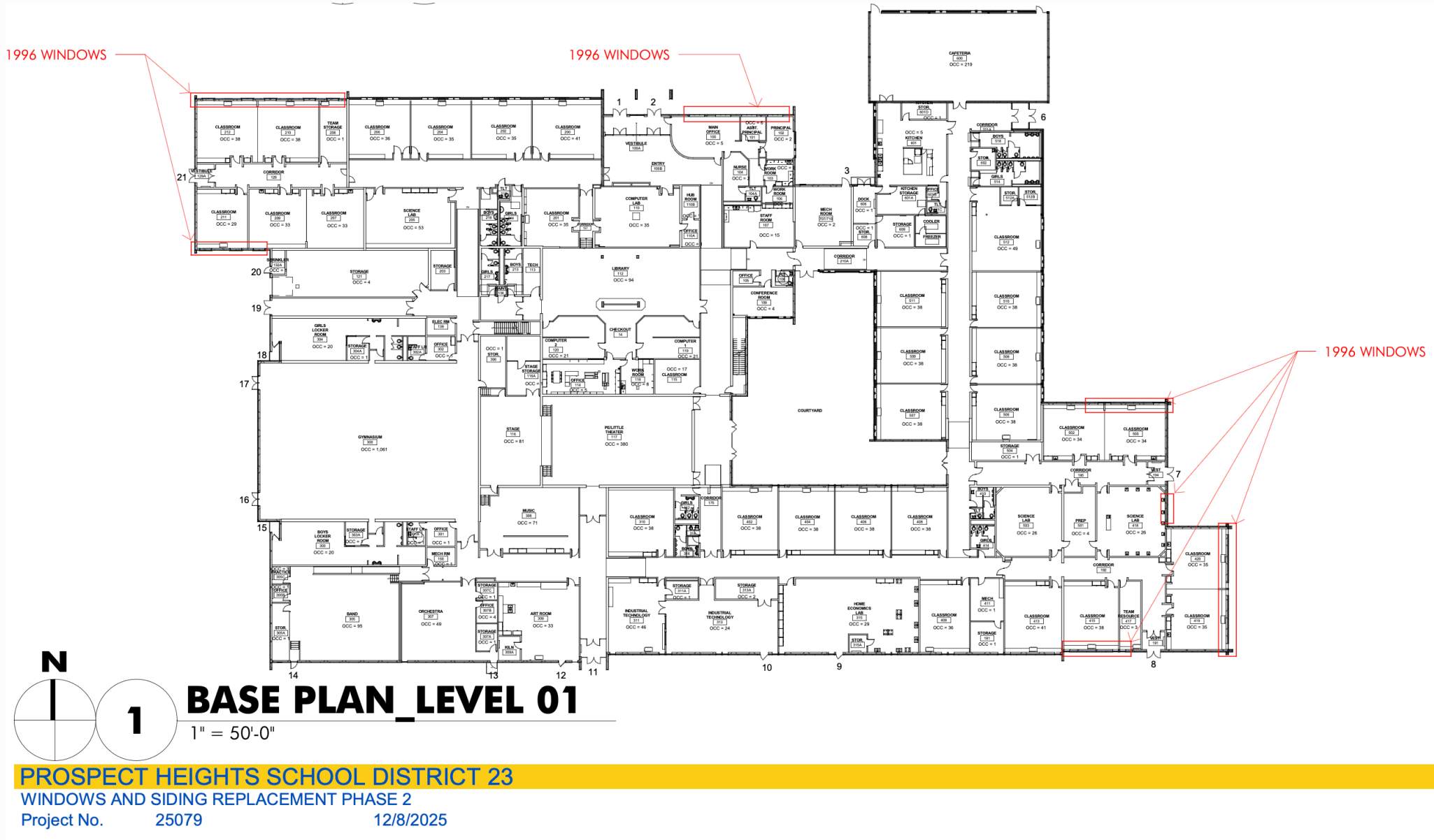
## ALTERNATE #2:

### Removal of Dust Collection System

- Cleans up exterior of MacArthur
- Removes safety concern
- Could be a stand-alone project
- Add \$49,000







# Alternate #3: 1996 Windows

- Most recent window replacement
- No siding disruption
- Could be a stand alone project
- DEDUCT \$155,800





# MACARTHUR BUDGET STATUS

All-in Construction Budget: \$2,193,000

ARCON Fee: \$ 170,000

District Managed Components: \$ 150,000

Add Alternates (Pending Ike Bid Opening):

- Curtain Wall in Gym \$ 52,500 Accept
- Dust Collector Removal \$ 49,000 Decline
- 1996 Windows (Deduct) \$ - 155,800 Decline

Total Projected Cost \$2,565,500



**ADDITION AT  
EISENHOWER  
TO MEET  
FULL-DAY  
KINDERGARTEN  
MANDATE**

# PRELIMINARY EISENHOWER TIMELINE:

- **July – February, 2026:** Develop Construction Design Documents to 100% including stakeholder input and partnership with external entities (MWRD, City of Prospect Heights, ComEd, etc.)
- **February, 2026** – Eisenhower Project Out to Bid
- **March, 2026** – Award Bid for Eisenhower project
- **Spring/Summer 2026** – Construction begins at Eisenhower
- **August 2027** – Eisenhower project completed

# EISENHOWER BUDGET STATUS

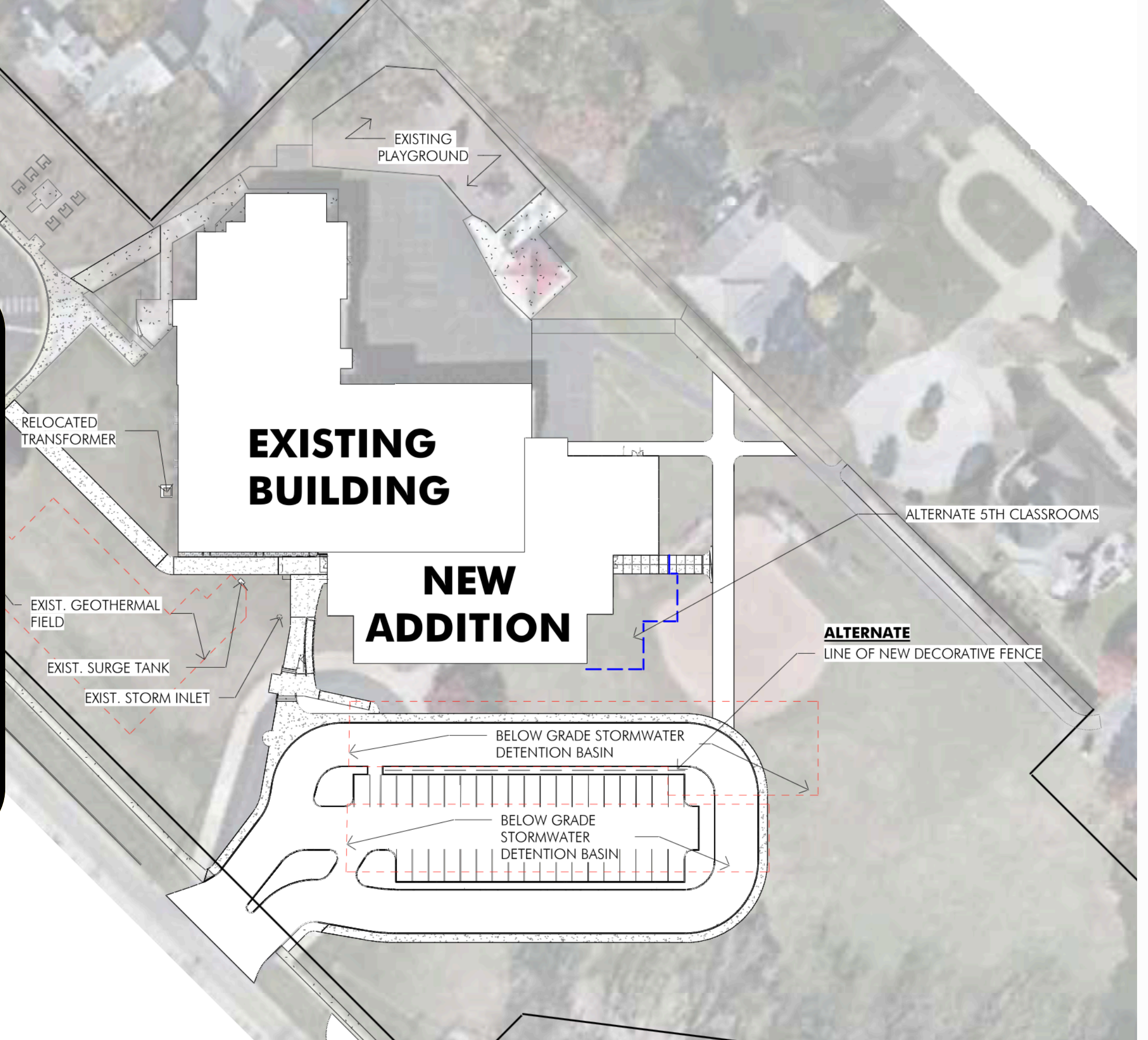
**95% Budget and CD Design**

<b>All-in Construction Budget Target</b>	<b>\$</b>	<b>12,500,000</b>
<b>ARCON Fee</b>	<b>\$</b>	<b>968,750</b>
<b>District Managed Components:</b>	<b>\$</b>	<b>750,000</b>
<b>Total Projected Cost</b>	<b>\$</b>	<b>14,218,750</b>

**Review of Add Alternates and Value Engineering (VE)  
will finalize base bid by end of January**



# CURRENT EISENHOWER RENDERINGS



## ARCHITECTURAL SITE PLAN

1/64" = 1'-0"



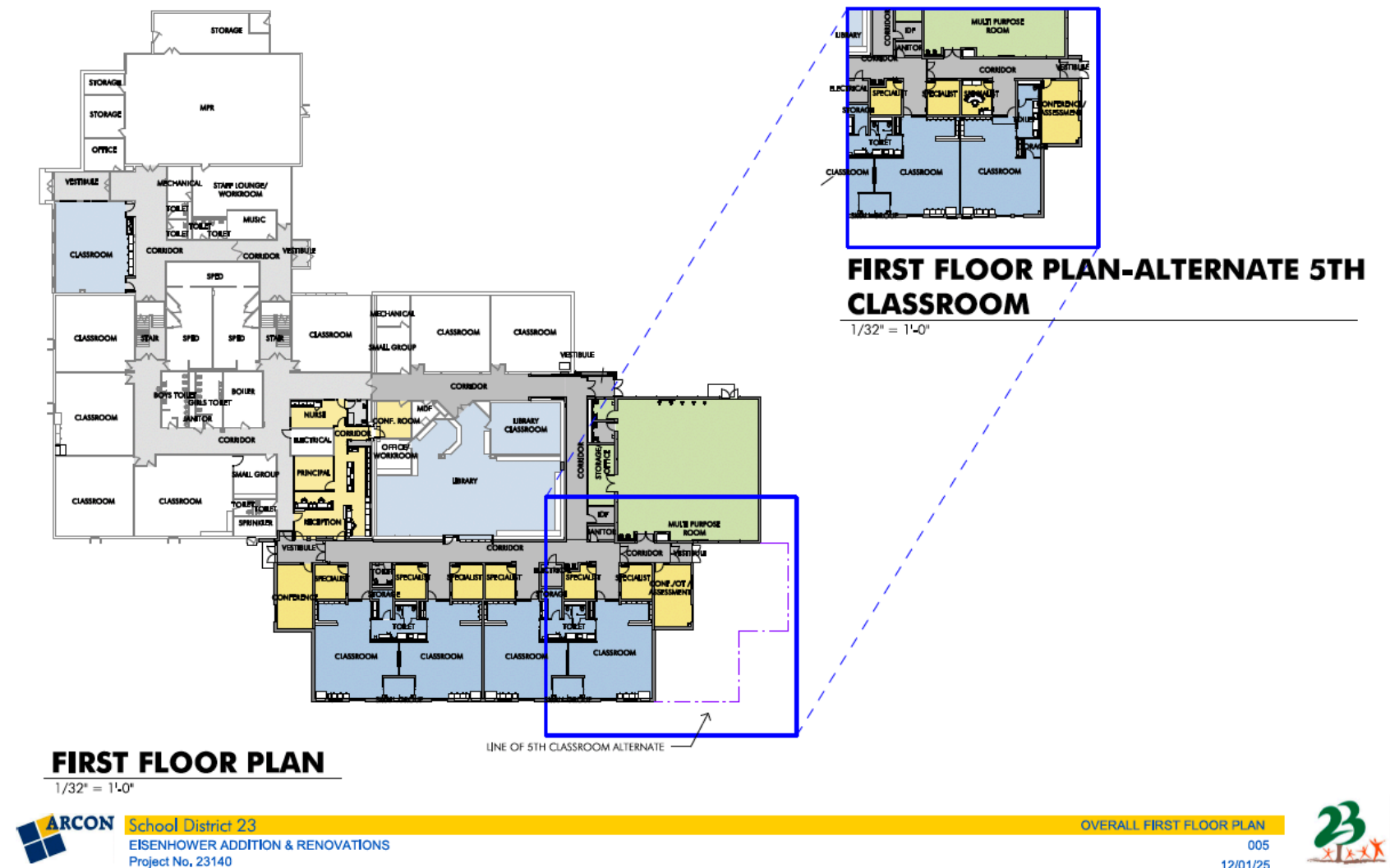
# Further Reductions or Eliminations

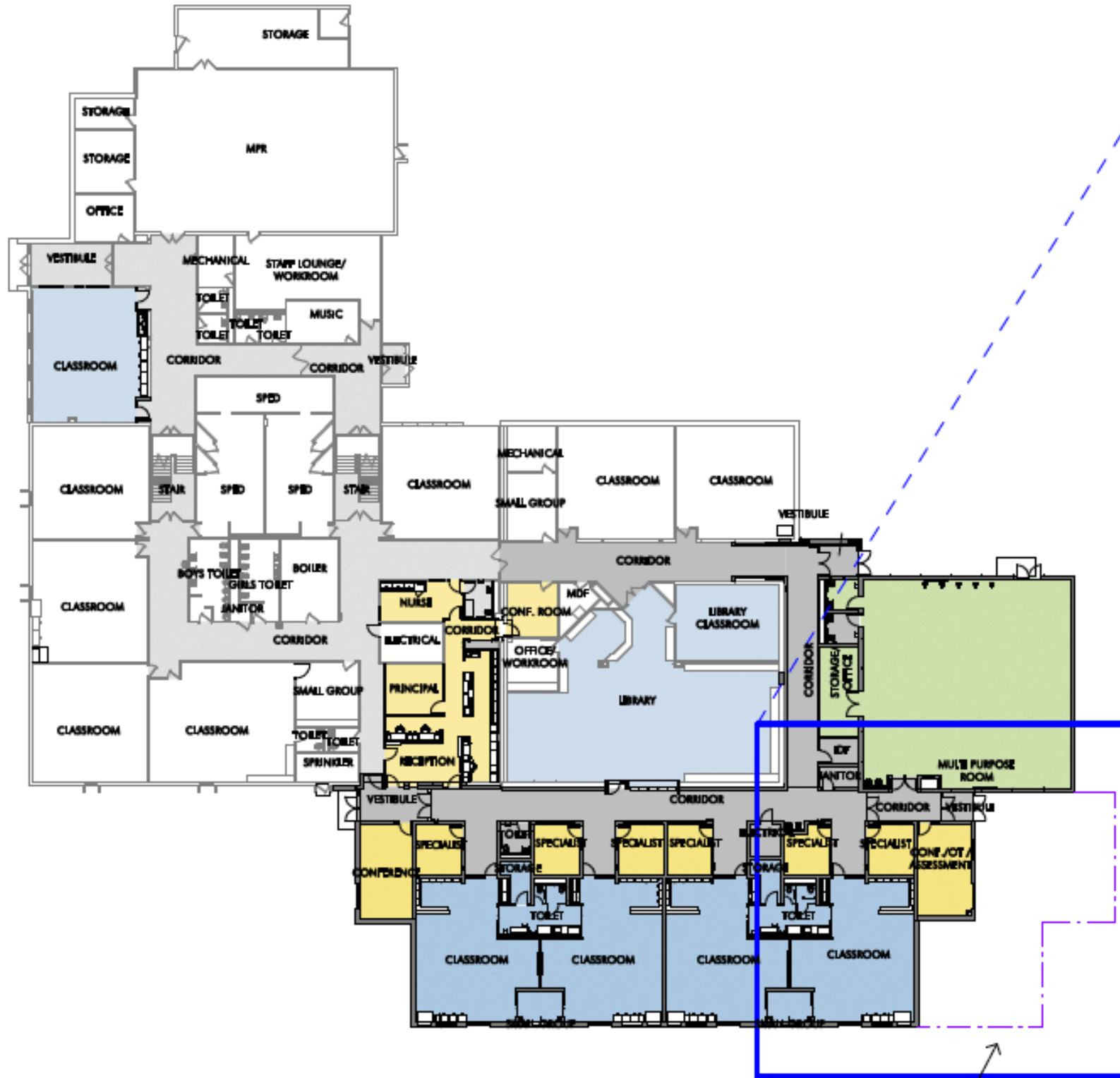


- Remove Clerestory Windows
- Hall Width
- Ceiling Height
- Exterior Classroom Doors – Sidewalks
- Multipurpose Room wall construction
- Flooring and siding options

# EISENHOWER ADDITION – ADD ALTERNATES:

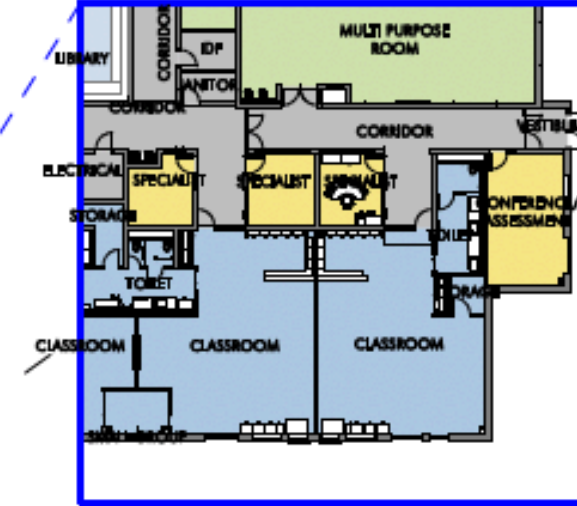
- 5<sup>th</sup> Classroom
- Main Entry Canopy
- Main Office Relocation
- Restroom Tile options
- Flooring and Siding Options
- Music/Art Classroom Divider
- Grass Sod vs. Seed Blanket
- Reduction of Casework
- Acoustical Wall Panels in MPR





## FIRST FLOOR PLAN

1/32" = 1'-0"



## FIRST FLOOR PLAN-ALTERNATE 5TH CLASSROOM

1/32" = 1'-0"



School District 23  
EISENHOWER ADDITION & RENOVATIONS  
Project No. 23140

OVERALL FIRST FLOOR PLAN

005  
12/01/25





# ALTERNATE: Main Office relocation and canopy











## Elimination of exterior classroom doors





School District 23  
EISENHOWER ADDITION & RENOVATIONS  
Project No. 23140

EXTERIOR-SOUTHWEST HIGH

018  
9/30/2025







School District 23  
EISENHOWER ADDITION & RENOVATIONS  
Project No. 23140

EXTERIOR-SOUTHWEST HIGH

018  
12/01/25



# Elimination of exterior classroom doors, sidewalk, and canopy





# 1 SOUTH ELEVATION-RENDERED-BASE BID

1/16" = 1'-0"



# 2 SOUTH ELEVATION-RENDERED-ALTERNATE 04

1/16" = 1'-0"



# 3 WEST ELEVATION-RENDERED

1/16" = 1'-0"

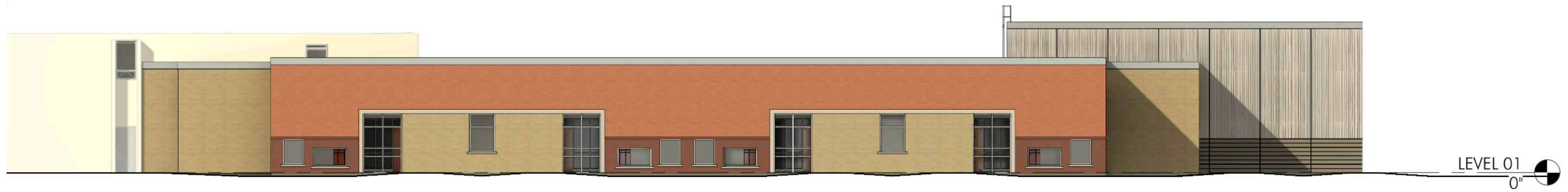


School District 23  
EISENHOWER ADDITION & RENOVATIONS  
Project No. 23140

RENDERED ELEVATIONS

017  
9/30/2025

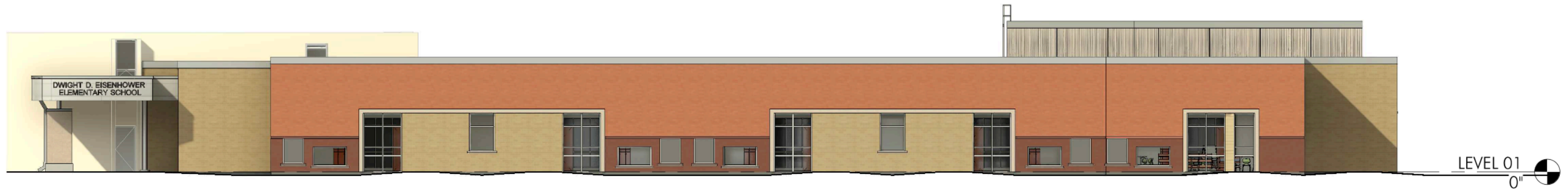




1

## SOUTH ELEVATION-RENDERED-BASE BID

1/16" = 1'-0"



2

## SOUTH ELEVATION-RENDERED-ALTERNATES 1 AND 5

1/16" = 1'-0"



3

## WEST ELEVATION-RENDERED

1/16" = 1'-0"



4

## WEST ELEVATION-RENDERED-ALTERNATE 5

1/16" = 1'-0"

**Elimination of clerestory windows, exterior classroom doors, MPR  
brick walls, and canopy**









**Elimination of clerestory windows, exterior classroom doors, and  
MPR brick walls**



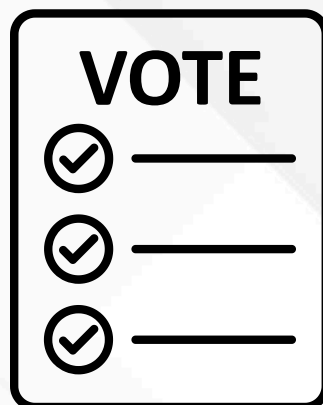
# KINDERGARTEN PROGRAM REVIEW & DEVELOPMENT



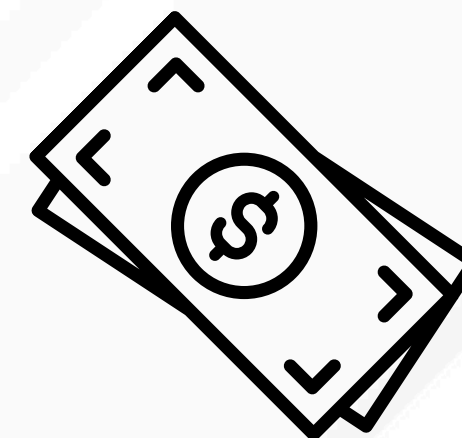
# **FULL-DAY KINDERGARTEN WORKING GROUPS**

- **Review and assess essential components of Full-Day Kindergarten(FDK) programs (October – December)**
- **Visit/Consult with neighboring Districts**
- **Facilitate staff and parent focus group reflections**
- **Develop operational impact summary (January)**
  - **Staffing**
  - **Programs and Services**
  - **Transportation**
  - **Food Service**
  - **Extended Day Program**





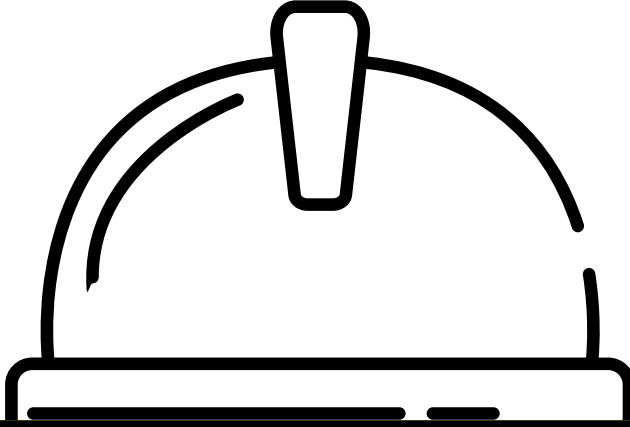
# REFERENDUM?



**Continued investigation and refinement of operational costs may lead to an articulated need and a corresponding tax increase request.**

**November 2026 ballot question by August 2026**





# QUESTIONS AND DISCUSSION