

**Southeast Extinguisher Service Inc.**

8319 Airport Blvd  
 Juneau AK 99801  
 907-790-2522

**Fire Suppression Systems****Service History**

Order # 37766

**JOB LOCATION**

Craig City School District  
 Craig Elementary School  
 100 School Road  
 Craig AK 99921  
 Service Date: 8/22/2024

P1: 826.3274

**CLIENT**

Craig City School District  
 Craig Elementary School  
 PO Box 800  
 Craig AK 99921

**CONTACT****TECHNICIAN**

SF

**Fire Suppression System****Status: 3**

Num: 1  
 Type: Wet Chemical Extinguishing System  
 Manufacturer: Amerex  
 Model: KP  
 Location: Kitchen

Last Service: 8/22/2024  
 Duct Size: 24"x7"

Remarks:

**Tests/Inspections/Services**

Description	Last	Due
Hydro Test	2024	<input checked="" type="checkbox"/>
Recharge		<input type="checkbox"/>
Semi-Annual	8/2024	<input checked="" type="checkbox"/>

**Cylinders**

Num	Size	Type	Mfg Date	Hydro	6 Year	S/N	Bar Code	Timestamp
1	275	Extinguishing Agent	2008	2024				

**Replacement Parts**

Qty	Description	Part No.	Replaced
2	Nozzle Cap	12334	
1	Fuse Links 360°F	G360K	

**Appliances (Left to Right)**

Num	Description	Size	Nozzle(s)
1	Range - 8 Burner	48"	16416, 14178

ALL WORK DONE IN ACCORDANCE WITH N.F.P.A. STANDARDS

Printed on: 9/25/2024 5:19:17 PM

**Southeast Extinguisher Service Inc.**

8319 Airport Blvd  
Juneau AK 99801  
907-790-2522

**Fire Suppression Systems**

**Service History**

Order # 37766

**JOB LOCATION**

Craig City School District  
Craig Elementary School  
100 School Road  
Craig AK 99921

P1: 826.3274

**CLIENT**

Craig City School District  
Craig Elementary School  
PO Box 800  
Craig AK 99921

Num	Description	Size	Nozzle(s)
-----	-------------	------	-----------

**Kitchen Inspection**

**I. Fire Suppression Systems**

OK FAIL NA

- 1. System meets UL 300 requirements  
NFPA 17A- 5.1
- 2. No change in hazzard protector  
NFPA 17A 7.3.3.1 (1)
- 3. System design and installed according to MFG instructions  
NFPA 17A- 4.1  
/\* Detection line installed incorrectly. \*/
- 4. System Cylinder weight or liquid level OK  
NFPA 17A- 7.3.3.1 (2), 7.3.6
- 5. System gauge in operable range  
NFPA 17A- 7.2..2 (6)
- 6. Actuation cartridge weight and date OK  
NFPA 17A 7.3.3.1 (2)
- 7. Exhaust and Makeup air fans turn on.  
NFPA 96 - 8.2.3
- 8. Makeup air shuts down on discharge.  
NFPA 96- 8.3.2
- 9. Remote pull operation and locations OK  
NFPA 17A- 5.2.1.10, 5.2.1.10.1, 6.4.7, 96- 10.5.1, 10.5.1.1  
/\* Remote pull located too close to hazard. \*/
- 10. Detection system/actuation devices OK  
NFPA 17A- 7.3.3.1 (2)  
/\* Needs new detection. \*/
- 11. Proper fuel shut-offs to heat producing appl. OK  
NFPA 17A- 4.4.4.1, 96- 10.4.1
- 12. Audible and visual notification devices operated  
NFPA 17A- 6.4.6
- 13. Appliance coverage per MFG specs  
NFPA 17A- 6.4.2.1
- 14. Nozzles in correct position for Appliance  
NFPA 17A- 6.4.2.1  
/\* Changed appliance nozzles and piping with customers parts. \*/
- 15. Nozzle caps replaced or OK  
NFPA 17A 7.2.2 (7)
- 16. Nozzles clean  
NFPA 17A- 7.3.3.1

ALL WORK DONE IN ACCORDANCE WITH N.F.P.A. STANDARDS

**Southeast Extinguisher Service Inc.**

8319 Airport Blvd  
Juneau AK 99801  
907-790-2522

**Fire Suppression Systems**

**Service History**

Order # 37766

**JOB LOCATION**

Craig City School District  
Craig Elementary School  
100 School Road  
Craig AK 99921

P1: 826.3274

**CLIENT**

Craig City School District  
Craig Elementary School  
PO Box 800  
Craig AK 99921

**Kitchen Inspection**

**I. Fire Suppression Systems**

OK FAIL NA

- 17. Fusible links/pneumatic tube replaced  
NFPA 17A- 7.3.4

---

- 18. All system components clean and free from debris  
NFPA 96- 11.4  
/\* Hood, duct and fan needs cleaning. \*/

---

- 19. System operation OK

---

- 20. Proper hand portable fire extinguishers  
NFPA 96- 10.10.2

---

- 21. Proper clearances from flame to Class K hazards 16"H 8"V  
NFPA 96- 12.1.2.5

---

- 22. Movable equipment, equipped with castor blocks.  
NFPA 17A- 5.6.4

---

- 23. All piping and conduit securely mounted  
NFPA 17A- 5.6.1.6  
/\* Detection and piping not secured. \*/

---

- 24. Water wash system functions OK  
NFPA 96- 10.2.8

---

- 25. Damper Function OK  
NFPA 96- 11.3

---

- 26. All system electrical components operate

---

- 27. Alarm panel reset position with no trouble signal  
/\* In trouble on arrival. Not connected to building fire alarm. \*/

---

- 28. System reset and operable

---

- 29. Condition of Hoses OK

---

- 30. Additional notes on inspection

I state that the information on this form is correct at the time and place of my inspection. All equipment tested at this time was left in operational condition upon completion of this inspection except as noted above.

**Inspector**



Stuart Falk 11053

8/28/2024

ALL WORK DONE IN ACCORDANCE WITH N.F.P.A. STANDARDS

**Southeast Extinguisher Service Inc.**

8319 Airport Blvd  
Juneau AK 99801  
907-790-2522

**Fire Suppression Systems**

**Service History**

Order # 37766

**JOB LOCATION**

Craig City School District  
Craig Elementary School  
100 School Road  
Craig AK 99921

P1: 826.3274

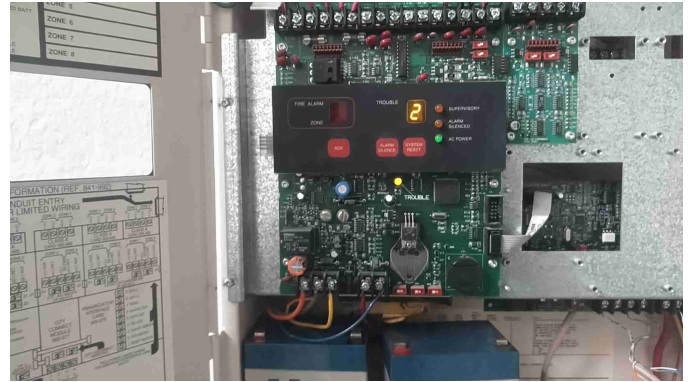
**CLIENT**

Craig City School District  
Craig Elementary School  
PO Box 800  
Craig AK 99921

**Exhibits**



SYS #1 - Appliance Line/Old Nozzles and Locations



SYS #1 - Alarm Panel Before Test



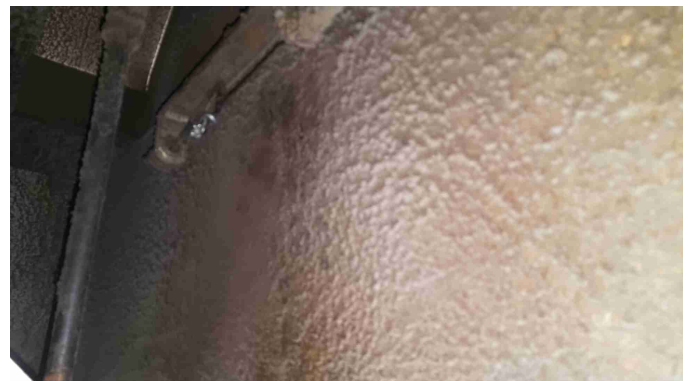
SYS #1 - Incorrect Detection Cable Installation



SYS #1 - Incorrect Detection Tension



SYS #1 - New Nozzle and Piping Location



SYS #1 - Plenum Needs Cleaning

ALL WORK DONE IN ACCORDANCE WITH N.F.P.A. STANDARDS

**Southeast Extinguisher Service Inc.**

8319 Airport Blvd  
Juneau AK 99801  
907-790-2522

**Fire Suppression Systems**

**Service History**

Order # 37766

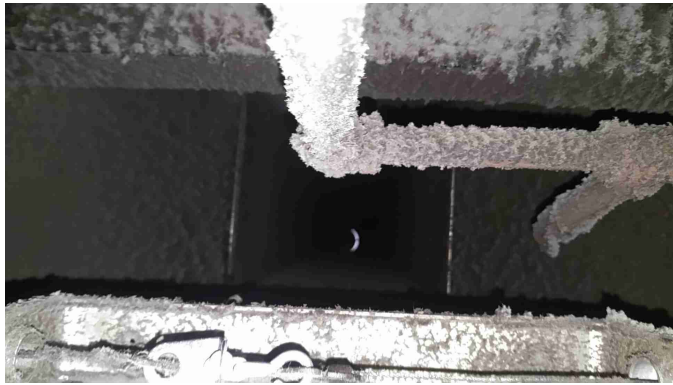
**JOB LOCATION**

Craig City School District  
Craig Elementary School  
100 School Road  
Craig AK 99921

P1: 826.3274

**CLIENT**

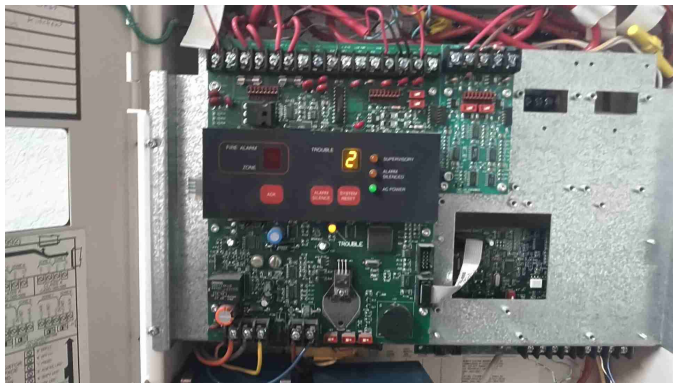
Craig City School District  
Craig Elementary School  
PO Box 800  
Craig AK 99921



SYS #1 - Duct Needs Cleaning



SYS #1 - Returned to Service



SYS #1 - Alarm Panel After Test

\*\*\* End Report: 1 \*\*\*

ALL WORK DONE IN ACCORDANCE WITH N.F.P.A. STANDARDS