

SAP GOAL AND MEASURES

ACADEMICS

District Growth Areas:

- 1.1 Ensuring the continued development of curriculum across all content areas with fidelity and uniformity across the district
- 1.2 Support a common assessment system to measure student learning
- 1.3 Support staff to better use assessment data to make instructional decisions and determine the effectiveness of strategies being implemented
- 1.4 Support universal preschool program

School Growth Areas:

- 1.1 Ensuring the continued development of curriculum across all content areas with fidelity and uniformity across the district
- 1.2 Support a common assessment system to measure student learning
- 1.3 Support staff to better use assessment data to make instructional decisions and determine the effectiveness of strategies being implemented
- 1.4 Support universal preschool program

HUMAN CAPITAL

District Growth Areas:

- 2.1 Recruit highly qualified staff
- 2.2 Professional Development will be imbedded and driven by staff or demonstrated student need
- 2.3 Support continued use of TEVAL and Admin Evaluation plan as a coaching tool for all of us
- 2.4 Support Human Resource Services

School Growth Areas:

- 2.1 Recruit highly qualified staff
- 2.2 Professional Development will be imbedded and driven by staff or demonstrated student need
- 2.3 Support continued use of TEVAL and Admin Evaluation plan as a coaching tool for all of us
- 2.4 Support Human Resource Services

OPERATIONS

District Growth Areas:

- 3.1 Support the integrated use of technology in all schools
- 3.2 Support Business Management Services
- 3.3 Support Facility Maintenance and Renovations
- 3.4 Write Blueprint for continued support of schools aligned to strategic plan

School Growth Areas:

- 3.1 Support the integrated use of technology in all schools
- 3.2 Support Business Management Services
- 3.3 Support Facility Maintenance and Renovations
- 3.4 Write Blueprint for continued support of schools aligned to strategic plan

CULTURE AND CLIMATE

District Growth Areas:

- 4.1 Support continued integration of PBIS in all schools
- 4.2 Increase parent and stakeholder involvement and feedback
- 4.3 Address student/family transiency and illegal residency issues
- 4.4 Actively participate on local and state boards and committees

School Growth Areas:

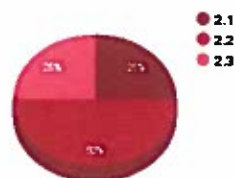
- 4.1 Support continued integration of PBIS in all schools
- 4.2 Increase parent and stakeholder involvement and feedback
- 4.3 Addressing student/family transiency and illegal residency issues
- 4.4 Actively participate on local and state boards and committees

Monthly Statistics Report

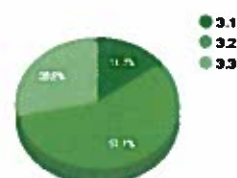
Academics



Human Capital



Operations



Culture and Climate



Strategic Plan



- Academics
- Human Capital
- Operations
- Culture & Climate



Indicator	1.1 Ensuring the continued development of curriculum across all content areas and uniformly across the district	1.2 Support a common assessment system to measure student learning	1.3 Support staff to better use assessment data to make instructional decisions and determine the effectiveness of strategies being implemented	1.4 Support universal preschool program	Date Completed	Academics
Academics Enter a 1 in the cells to indicate alignment to goal	✓	✓	✓			Attended Education Transformation Project Committee Meeting
	✓					Attended Para-educator of the year awards night
	✓					Attended Alliance District Convening
	✓	✓				Planned for CAPSS Student Awards for Dec. 1, 2016
Indicator	2.1 Recruit highly qualified staff	2.2 Professional Development will be embedded and driven by staff or demonstrated student need	2.3 Support continued use of TEVAL and Admin Evaluation plan as a coaching tool for all of us	2.4 Support Human Resource Services	Date Completed	Human Capital
Human Capital Enter a 1 in the cells to indicate alignment to goal	✓	✓	✓			Human Capital
						Attended CAS/CAPSS Convocation
						Attended Superintendents Network Meeting
						Coordinated Professional Development on My Learning Plan
						Interviewed Faculty Appointment Recommendations
Indicator	3.1 Support the increased use of technology in all schools	3.2 Support Business Management Services	3.3 Support Facility Maintenance and Renovations	3.4 Write Blueprint for continued support of schools aligned to strategic plan	Date Completed	Operations
Operations Enter a 1 in the cells to indicate alignment to goal	✓	✓	✓			Held Budget Sub Committee Meeting
		✓				Met with City regarding Budget
		✓	✓			Met with Mr. McLiverly regarding Chillers at DMS
		✓				Attended Bond Commission Meeting
		✓	✓			Met with Ed Arum re Turf Field Project
		✓				Participated in meeting with CCAT re Nellie Mae Grant opportunity
						Attended Women Making A Difference Event
						Panelist in Valley United Way Leadership Series
Indicator	4.1 Support continued integration of PBIS in all schools	4.2 Increase parent and stakeholder involvement and feedback	4.3 Addressing student/family transiency and legal residency issues	4.4 Actively participate on local and state boards and committees	Date Completed	Culture and Climate
			✓			Attended Derby Downtown Forum

Culture and Climate

Enter a 1 in the cells to indicate alignment to goal

			✓		Attended BOA Meeting
	✓				Surveyed Admins regarding changes to Parent Survey
			✓		Participated In Derby's BEST
			✓		Visited Recovery HS in Boston with State representatives
			✓		Attended 49th United Way Campaign Kickoff
			✓		Attended BHCare BOD meeting
			✓		Attended CAPSS BOD meeting & Chaired CAPSS Legislative Committee Meeting & Participated in Federal Relations Committee Meeting
			✓		Chaired SCASA Meeting
		✓			Met with Derby Housing Authority. Made Presentation to DHA Board

