

October 21, 2024

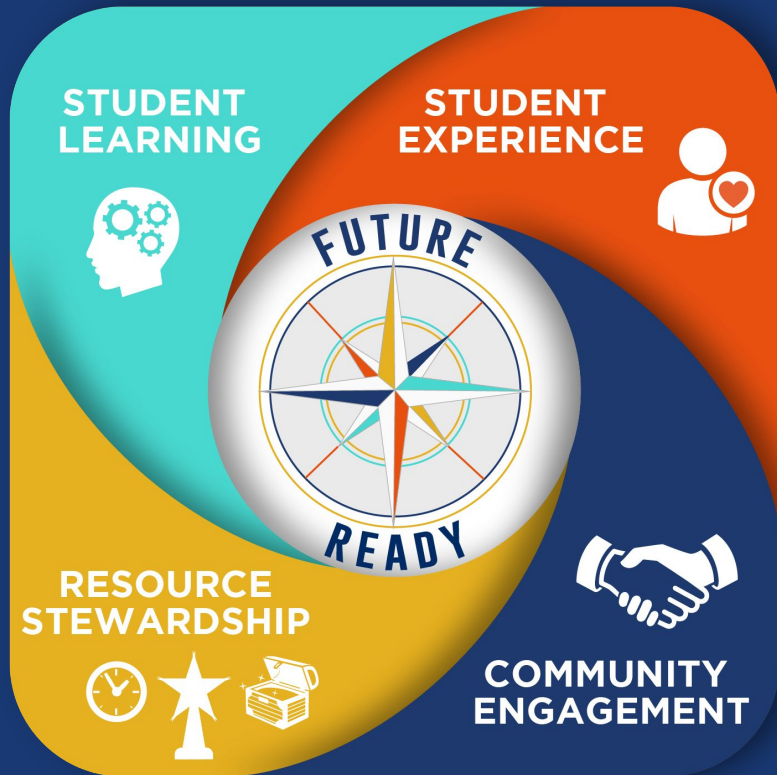


External PE

Trish Cuckler and Debra McDonald



23-24 External PE Review



Student Learning

Engage students through relevant instruction, sparking curiosity, and meeting individual needs

Student Experience

Create engaging environments where students are challenged in and out of the classroom

Community Engagement

A connected culture of community engagement that maximises the expertise of our community partners

Resource Stewardship

Honor student time and talent with innovative schedules

23-24 External PE Review



- Texas administrative code allows for private or commercially-sponsored physical activity programs conducted off campus to count for PE credit
- 413 students participated
 - 88 High School students
 - 325 Middle School students
- Boxing was added as a level II sport

Participation Numbers

	High school	Middle School
Level I	57	145
Level II	31	180

Level I: 15+ hours, 5 day minimum

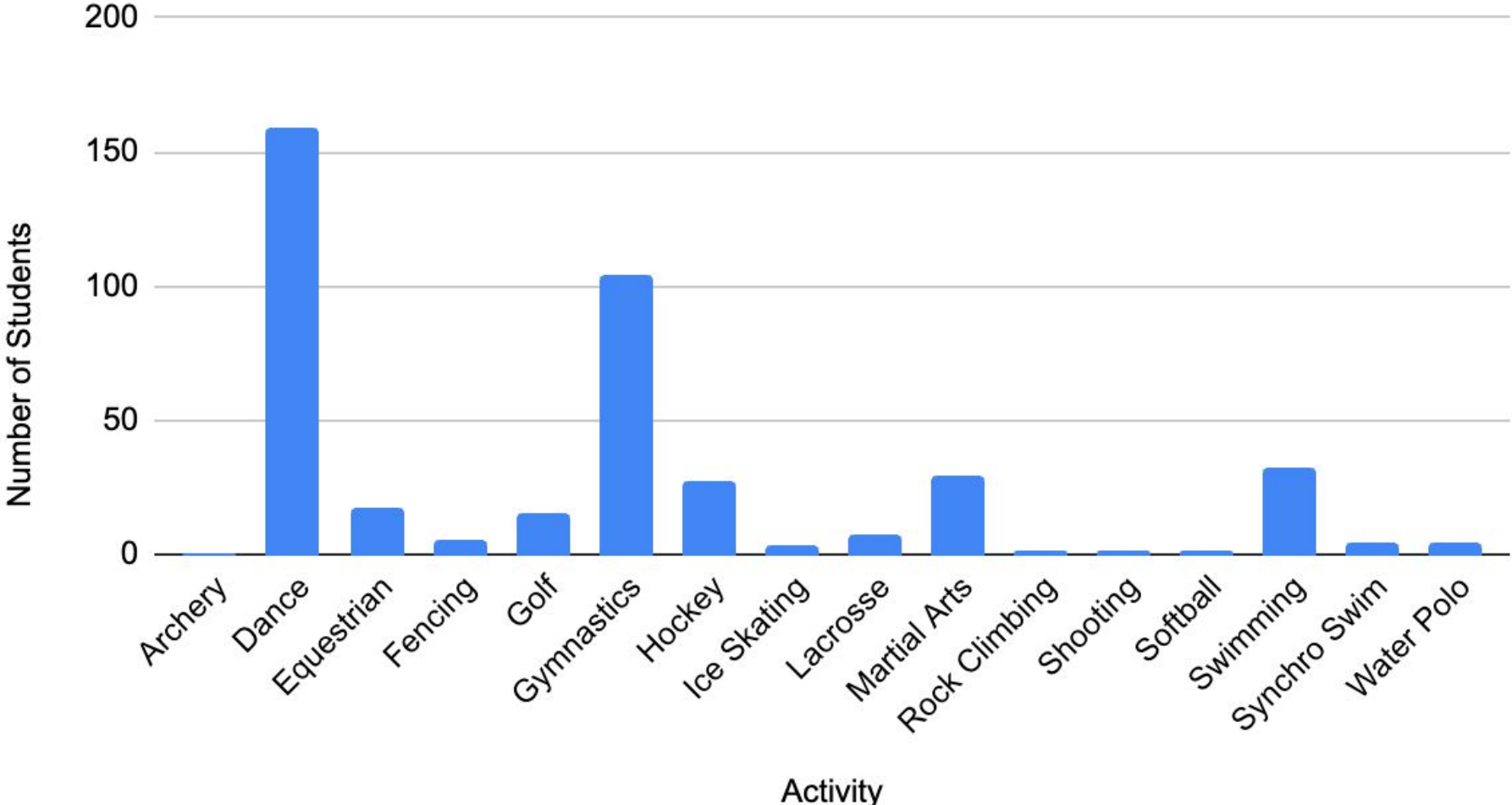
Level II: 5 hours, 3 day minimum



23-24 External PE Review



Number of Students vs. Activity



External PE Cost Analysis



Lewisville ISD	413 Students
Cost Per 9 Weeks	\$100 (HS only)
Cost Per Semester	\$150 (HS) \$75 (MS)
Cost Per Year	\$250 (HS) \$150 (MS)

*Last spring we analyzed registration costs compared to other districts. LISD External PE registration has remained the same since 2008. The decision was made to keep the current registration fees. We will re-evaluate cost in December.



Thank you!