

ELA K-5 Curriculum Grant Process and Selection



State Committee Members:

Christi Nixon

Deidre Jenson

Joel Jenson

Laura Anania and Sonya Cook (interchanged)

Tawnya Weaver

Local Committee Members:

Christi Nixon, Deidre Jenson, Joel Jenson, Laura Anania, Sharlet Collins, Sonya Cook, Tawnya Weaver

State Deadlines and Process

Application Submitted November.

Award Given December 2th.

First step: Give state input on December 7th. State presented 7 curricula and all participating districts gave feedback. This narrowed

February: Curriculum review with state and implementation planning: Response to Intervention (RTI) Conference

Ongoing: State Webinars

District piloting and planning

April 21st Inservice: District weigh in concerning implementation needs.

State representative assistance mtg.

April 28th: State Implementation Planning

May 3rd: Recommended Board approval

May 5th: Order materials

SISD Award

Awarded December 2nd

Budget:

District	RTI Travel	SOR Travel	Curriculum Purchase	Total
Southeast Island	\$12,500.00	\$12,500.00	\$52,166.00	\$77,166.00

Not all funds were used for Travel.

State Options to choose from:

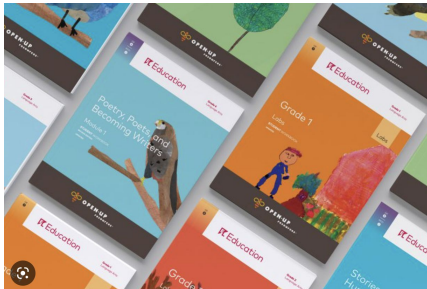
- Began with 21 which the state narrowed down to 7.
- Districts participating weighed in and the selection was narrowed down to 4.
- We were to choose 1 selection from these 4:

Benchmark Reading

**Into Reading (from
Houghton Mifflin Harcourt)**



**EL
Education**



******(CKLA) from Amply**



EL Education

Pros:

Not many (This didn't even make our (SISD) original 4 recommended to the state.

Cons

*Weak in phonics

Into Reading (Houghton Mifflin Harcourt)

Pros

*Similar to our current ELA curriculum, so teacher may be slightly more familiar with the structure.

Cons:

- This program looked too similar to our current curriculum materials, Houghton-Mifflin Reading
- Sonya's class of 4th and 5th grade students, when presented with the HMH student book and the Amplify student books unanimously chose the Amplify student books.
- -lacks in phonics instruction. Especially earlier grades
- Little story booklets did not make a coherent story. Pages were random thoughts not following a plot line. So when you are trying to support the purpose of reading,
-

Benchmark Reading

Pros

*very engaging:

*readers theater; but we could still purchase these separately, and actually have in the district prior.

Cons

- Difficult to manage for our district - especially with multi-age classrooms. AND SHARING of materials.
- large volume of books (teacher & student materials) to keep up with for each grade level.
-
- Did not readily find or easy access to supplemental and differentiated materials
- Expensive because of all the pieces
-

(CKLA from Amplify)*

* #of other districts/ chose those same curriculum

Pros:

- *Strong in phonics
- *Reading/listening - Group reading
- *Good online materials for intervention - still trying to learn more about hands on materials
- *Robust online materials
- *Same company as mClass screener (alignment)

Cons:

- *At first we thought it was limited resources/books, but as we learned more, we discovered that there are a few more pieces, however you can find the materials online
- * Not easy to navigate thru the teacher guide, student workbooks are bland (not a lot of color)

(CKLA from Amplify) *Continued

Pros:

- Ease of multi-grade teaching—students are engaged in the books regardless of grade level
- Building more background knowledge
- Robust vocabulary
- Easier to use with multi-grade classrooms: presentation is in mini-books vs one to two large student text/ similar themes across grade level/ spirals and deepens in complexity and scope
- Online language studio seems to be great resources for developing writing skills.
- Other districts are selecting this and professional development could possibly be combined saving money

ELA Curriculum Committee

***HUGE thank you to our ELA curriculum committee:

*As with any grant, the documentation for this was very cumbersome.

*Our Curriculum committee sacrificed a LOT of time during our trip to the REading symposium - working until 9pm (as well as on the ferry both directions) to complete this document.

Recommendation and Cost

Total Cost for 6 year subscription is \$102,085.30 including professional development (PD).

PD is \$4750 out of Title money and other grant money.

The actual curriculum (97,335) will come out of:

*CKLA Grant (approximately): 60,000+

*ESSER III: Remainder

Lucienne? Comments?