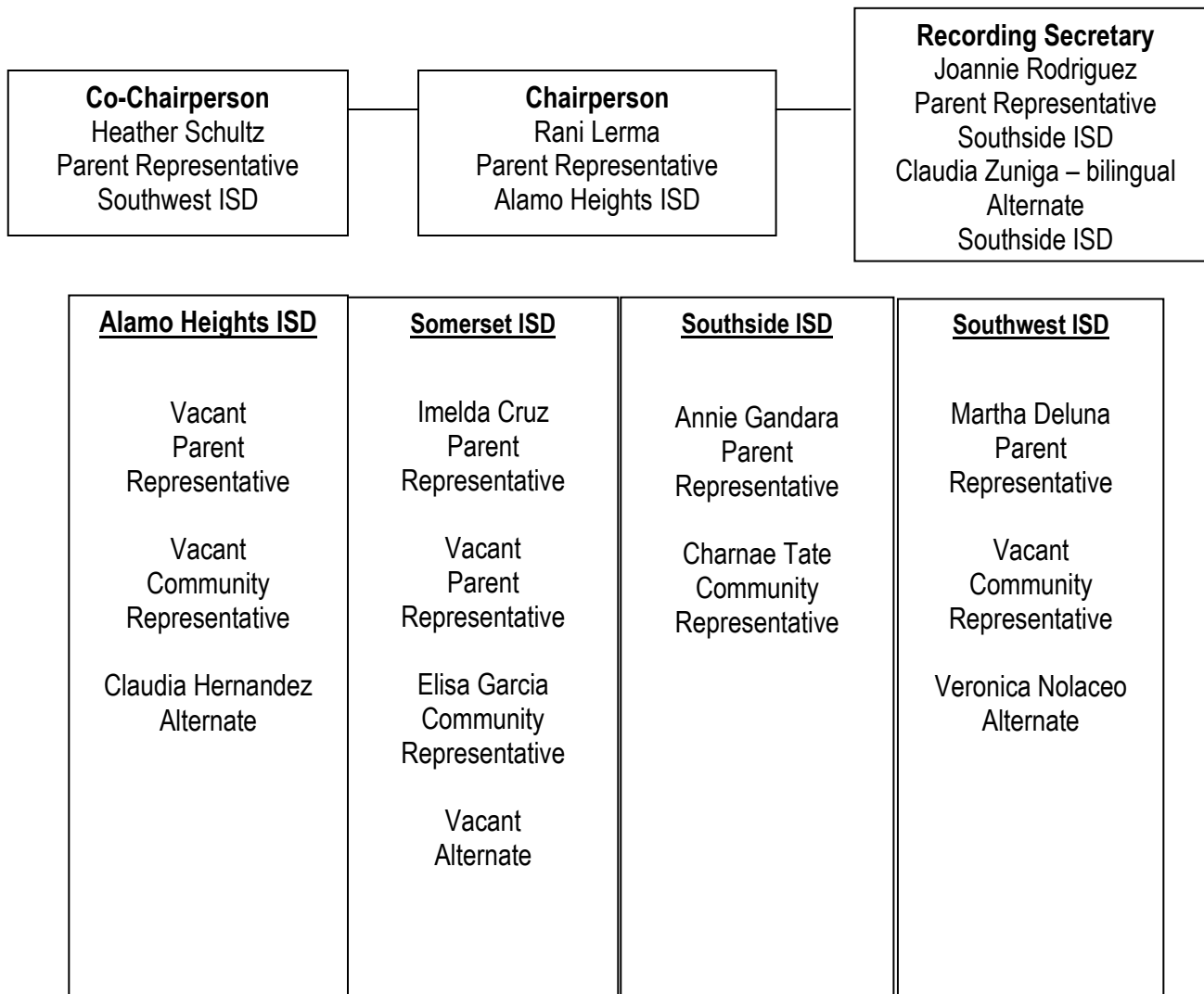


Education Service Center, Region 20 Bexar County Head Start Policy Council Organizational Chart



Each school district has two parent representatives, one community representative and one alternate. Southwest ISD has two alternate positions due to the size of the program in the ISD; however, the voting weight is equal across all four school districts. Representatives were selected during the first Parent Committee meeting of the school year. Staff will work to recruit representatives to fill the vacancies at the next available meeting.