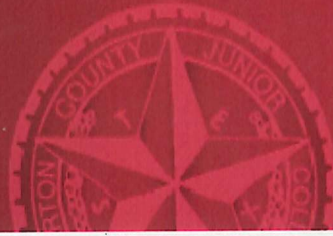




*Wharton County
Junior College*



Monthly Financial Reports

May 2023



Revenue & Expenditure Summary

	FISCAL 2023				FISCAL 2022			% OF PRIOR YR ACTUAL
	Current Month	Y-T-D ACTUAL	Budget	% of Budget	Y-T-D ACTUAL	Budget	% of Budget	
Fund 1000								
Revenues:								
State appropriations	\$ 883,999	\$ 6,667,629	\$ 9,305,255	71.65%	\$ 6,653,258	\$ 9,305,255	71.50%	100%
Tuition and Fees	669,730	16,834,339	19,078,257	88.24%	16,795,627	19,894,485	84.42%	100%
Advalorem Taxes	112,718	9,060,905	8,756,525	103.48%	7,677,868	7,675,517	100.03%	118%
Mandatory Transfers	-	192,274	1,350,273	14.24%	195,258	327,215	59.67%	98%
Non-mandatory Transfers	-	1,369,620	3,342,283	40.98%	899,769	2,747,648	32.75%	152%
Other Revenues	273,440	992,247	684,968	144.86%	(514,786)	447,053	-115.15%	193%
Total Revenues	1,939,887	35,117,015	42,517,561	82.59%	31,706,994	40,397,173	78.49%	111%
Expenditures:								
Salaries	1,740,470	15,354,016	22,927,456	66.97%	15,763,479	23,235,139	67.84%	97%
Employee Benefits	418,506	3,500,051	6,045,646	57.89%	3,578,030	5,974,322	59.89%	98%
Capital Expenditures	85,552	294,854	1,925,999	-	53,711	152,633	35.19%	549%
Mandatory Transfers	-	368,930	367,800	100.31%	367,107	367,800	99.81%	100%
Non-mandatory Transfers	-	-	-	-	-	-	-	0%
Other Expenditures	791,706	7,392,472	11,250,660	65.71%	6,843,436	10,667,279	64.15%	108%
Total expenditures	3,036,235	26,910,323	42,517,561	63.29%	26,605,762	40,397,173	65.86%	101%
Net increase/ (decrease) in net assets	\$ (1,096,348)	\$ 8,206,692			\$ 5,101,233			
Less Outstanding encumbrances		(2,590,599)			(1,203,211)			
Net increase less encumbrances		\$ 5,616,093			\$ 3,898,021			

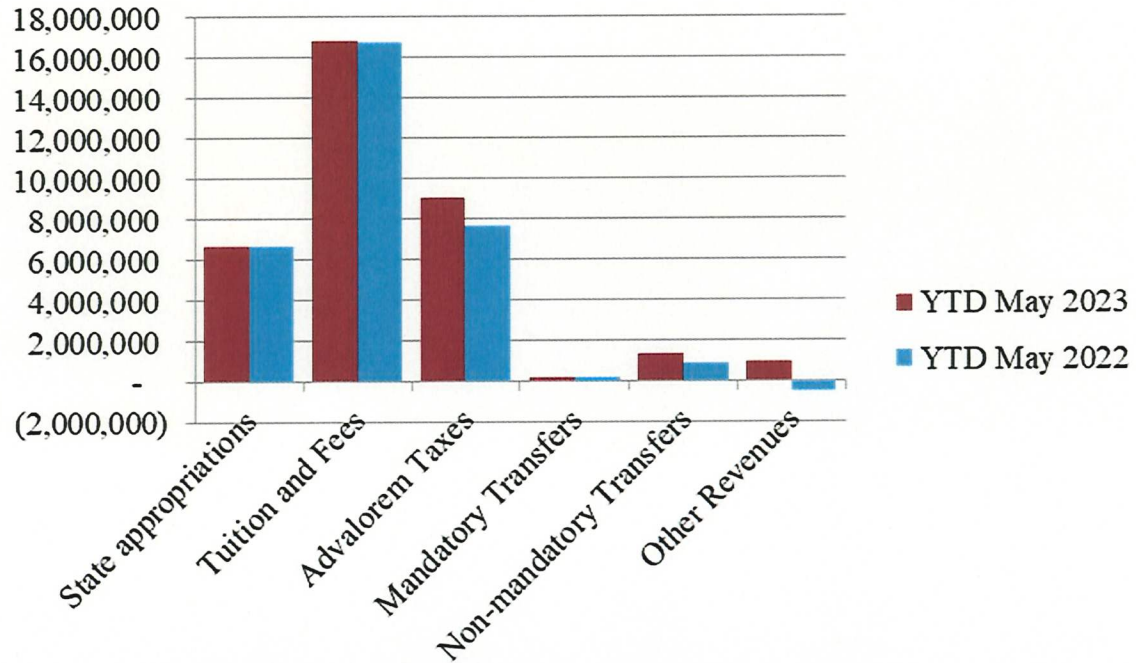
* Note: Net student receivables in the amount of \$ 3,314,261,95 are currently outstanding. Tuition and fees are subject to collection in future periods.



Wharton County
Junior College

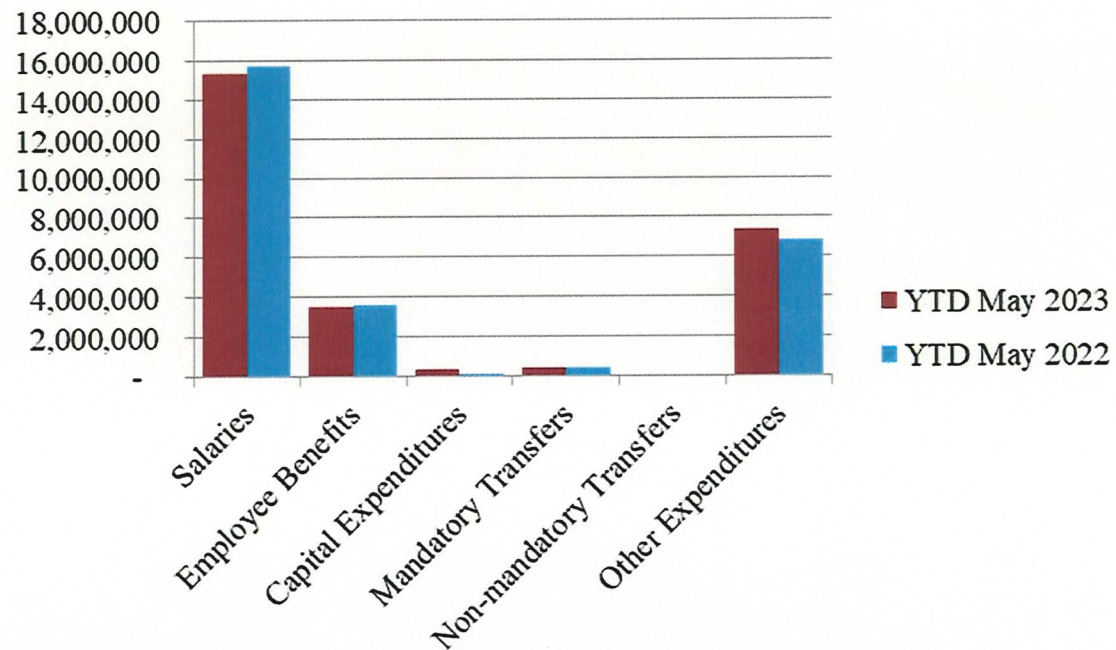


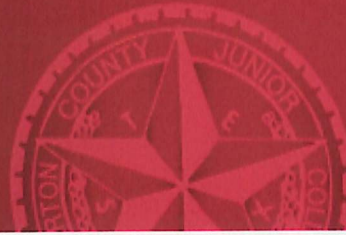
Year to Date Revenues



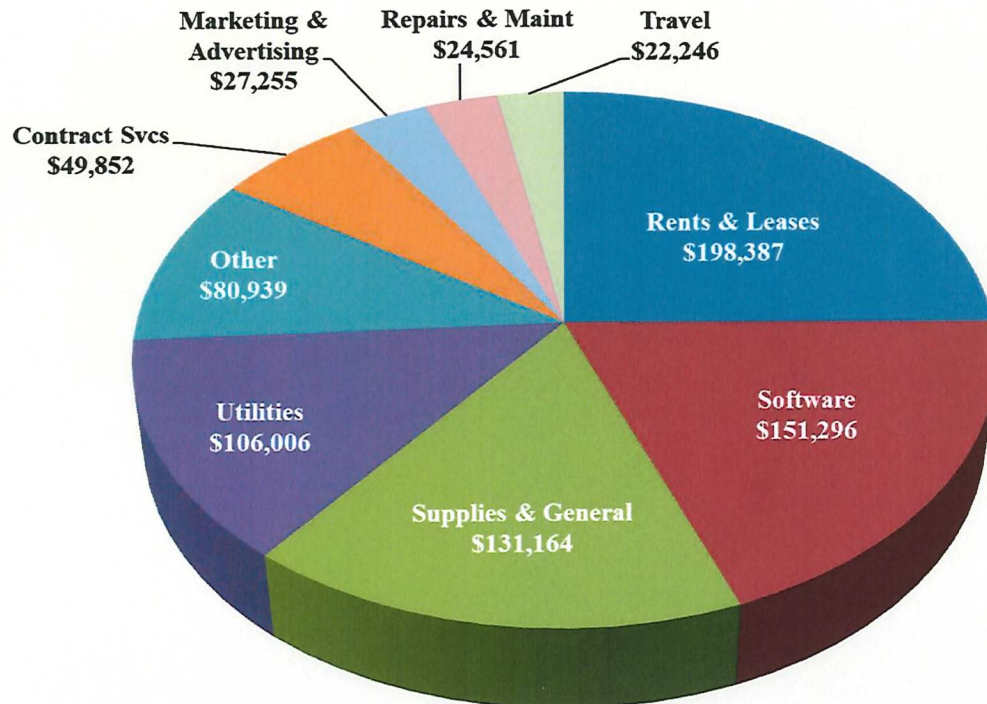


Year to Date Expenses





Other Expenses for May



- Software includes \$91k for Zogo Technologies

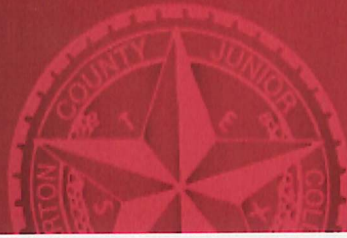


Analysis of Student Receivable Outstanding As of May 31, 2023

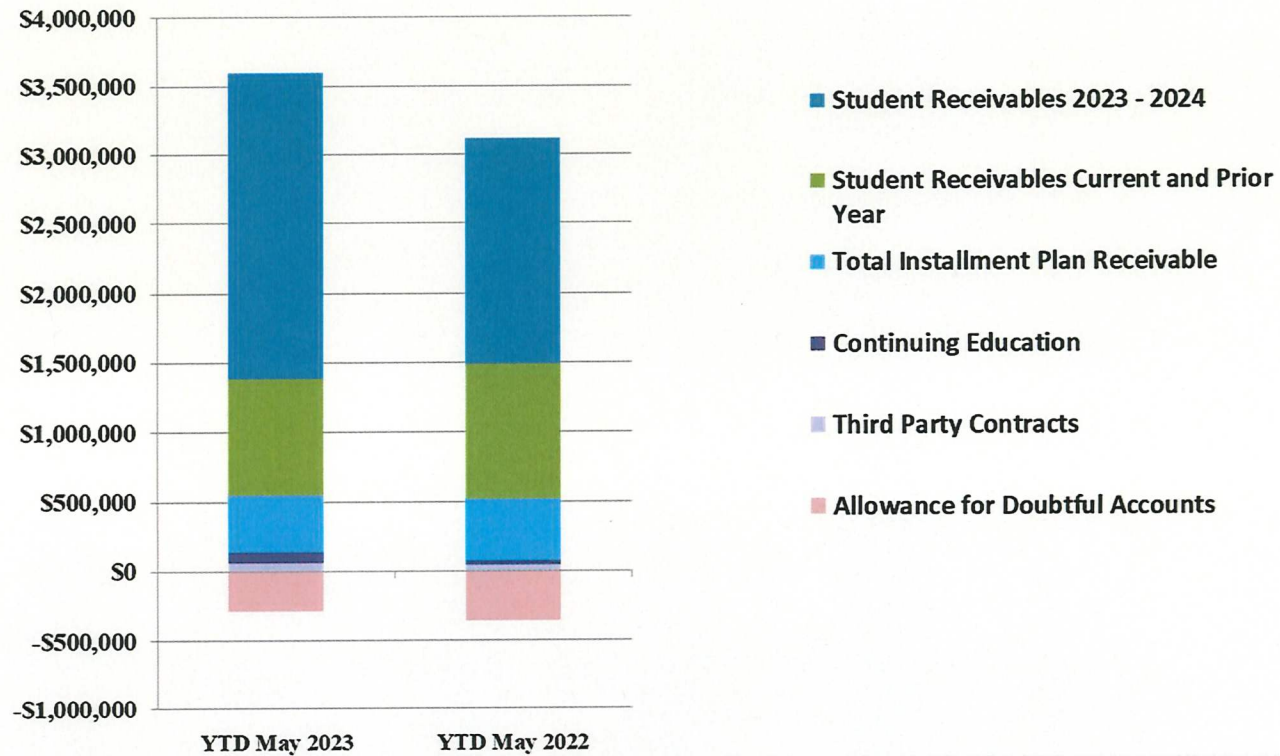
	2023	2022
Student Receivables Current and Prior Yr.	\$ 835,881.96	\$ 969,170.47
Student Receivables 23-24	\$ 2,214,419.75	\$ 1,631,156.22
Installment Plan Receivable Due Fall Semester	\$ 91,244.00	\$ 40,566.05
Installment Plan Receivable Due Spring Semester	92,781.59	103,652.65
Installment Plan Receivable Summer I & II	152,752.55	129,418.91
Installment Plan Receivable Prior Years	72,371.98	165,990.38
Total Installment Plan Receivable	<u>\$ 409,150.12</u>	<u>\$ 439,627.99</u>
Third Party Contracts Receivable	\$ 58,053.00	\$ 40,221.47
Continuing Education Receivable	83,121.87	36,065.00
Allowance for Doubtful Accounts	(286,364.75)	(356,582.39)
Net Accounts Receivable	<u>\$ 3,314,261.95</u>	<u>\$ 2,759,658.76</u>



Wharton County
Junior College



AR by Category



COMBINED BALANCE SHEET

(Funds included: GOVERNMENTAL FUND TYPES)

Wharton County Junior College
 Combined Balance Sheet--All Fund Types and Account Groups
 31-May-2023
 (With comparative totals for 31-May-2022)
 (amounts expressed in dollars)

Governmental Fund Types

	Auxiliary Enterprise	Current Unrestricted	Restricted Funds	Current Year 2023	Prior Year 2022
ASSETS and OTHER DEBITS:					
ASSETS:					
Cash	13,678	2,672,820	606,660	3,293,158	4,043,681
Cash Investments	754,805	21,085,227	1,127,352	22,967,384	19,822,161
Accounts Receivable	35,592	3,352,001	5,681	3,393,274	2,818,067
Taxes Receivable		562,185	--	562,185	568,195
Local, St & Fed Agency Receivable		--	421,946	421,946	1,389,738
Deposits		--	--	--	4,892
Due From Other Funds		300,000	--	300,000	117,022
Prepaid Expense		--	--	--	--
Property, Plant & Equipment		--	--	--	--
Deferred Outflows		9,340,694	--	9,340,694	10,285,070
TOTAL ASSETS AND OTHER DEBITS:	804,075	37,312,927	2,161,639	40,278,641	39,048,824
Liabilities, equity and other credits					
LIABILITIES:					
Accounts Payable	31	76,827	53	76,911	82,289
Employee Benefits Payable	615	267,185	--	267,800	230,081
Payroll Taxes Payable		-5,549	--	-5,549	-1,872
Accrued Liabilities		--	--	--	--
Deferred Revenue	1,000	2,242,110	502,385	2,745,495	2,536,691
Long Term Debt		--	--	--	--
Net Pension Liability		4,103,835	--	4,103,835	9,228,835
Net OPEB Liability		32,567,646	--	32,567,646	32,567,646
Lease Liab - Long Term		--	--	--	--
Deposits Payable	61,352	11,878	--	73,230	75,863
Due To Other Funds		--	300,000	300,000	117,022
Scholarships-Designated Donations		--	10,294	10,294	68,368
Scholarships-Non-designated		--	1,024,349	1,024,349	749,982
Donatio					
Deferred Inflows		9,710,668	--	9,710,668	6,185,814
TOTAL LIABILITIES:	62,998	48,974,600	1,837,081	50,874,679	51,840,718
EQUITY AND OTHER CREDITS:					
Control Accounts		--	--	--	--
Fund Balances		--	--	--	--
Prior Year Fund Balance		-19,313,888	--	-19,313,888	-19,412,977
Endowment Fund-Original		--	--	--	--
Endowment Fund-Income		--	--	--	--

Governmental Fund Types

	Auxiliary Enterprise	Current Unrestricted	Restricted Funds	Current Year 2023	Prior Year 2022
EQUITY AND OTHER CREDITS:					
FB Professional Development		--	--		
FB Salary Equity		--	--		
FB Capital Equipment		--	--		
FB Investment Gain And Loss		--	--		
Fund Balance Receivables		--	--	-	-
Reserved-Undesignated		--	--		
FBTC Operating Fund Balance		--	--		
Plant Fund Balance		--	--		
Bond Fund Balance		--	--		
Scholarship		--	--		
Fund Balance-Rounding Diff		--	-	-	-
Fund Balances:					
Reserve for Encumbrance	15,083	2,590,599	686,985	3,292,667	2,800,801
Fund Balance	725,994	5,061,617	-362,427	5,425,184	3,820,283
Reserve For Operations		--	--		
TOTAL EQUITY AND OTHER CREDITS:	741,077	-11,661,672	324,558	-10,596,038	-12,791,894
TOTAL LIABILITIES, EQUITY AND OTHER CREDITS:	804,075	37,312,927	2,161,639	40,278,641	39,048,824
=====					

Proprietary Fund Types

	Agency Funds	Current Year 2023	Prior Year 2022
ASSETS and OTHER DEBITS:			
ASSETS:			
Cash	74,484	74,484	83,351
Cash Investments	164,679	164,679	159,192
Accounts Receivable	-	-	-
Taxes Receivable			
Local, St & Fed Agency Receivable			
Deposits			
Due From Other Funds			
Prepaid Expense			
Property, Plant & Equipment			
Deferred Outflows			
TOTAL ASSETS AND OTHER DEBITS:	239,163	239,163	242,543
Liabilities, equity and other credits			
LIABILITIES:			
Accounts Payable			
Employee Benefits Payable	-	-	-
Payroll Taxes Payable			
Accrued Liabilities			
Deferred Revenue			
Long Term Debt			
Net Pension Liability			
Net OPEB Liability			
Lease Liab - Long Term			
Deposits Payable	234,115	234,115	242,172
Due To Other Funds			
Scholarships-Designated Donations			
Scholarships-Non-designated			
Donatio			
Deferred Inflows			
TOTAL LIABILITIES:	234,115	234,115	242,172
EQUITY AND OTHER CREDITS:			
Control Accounts	5,048	5,048	370
Fund Balances			
Prior Year Fund Balance			
Endowment Fund-Original			
Endowment Fund-Income			

Proprietary Fund Types

	Agency Funds	Current Year 2023	Prior Year 2022
<hr/>			
EQUITY AND OTHER CREDITS:			
FB Professional Development			
FB Salary Equity			
FB Capital Equipment			
FB Investment Gain And Loss			
Fund Balance Receivables			
Reserved-Undesignated			
FBTC Operating Fund Balance			
Plant Fund Balance			
Bond Fund Balance			
Scholarship			
Fund Balance-Rounding Diff			
Fund Balances:			
Reserve for Encumbrance			
Fund Balance			
Reserve For Operations			
TOTAL EQUITY AND OTHER CREDITS:	5,048	5,048	370
<hr/>			
TOTAL LIABILITIES, EQUITY AND OTHER CREDITS:	239,163	239,163	242,543
<hr/>			
=====			

Fiduciary Fund Types

	Endowment Funds	Quasi Endowment Fund	Current Year 2023	Prior Year 2022
ASSETS and OTHER DEBITS:				
ASSETS:				
Cash	95,356	--	95,356	148,458
Cash Investments	12,023,734	--	12,023,734	12,653,292
Accounts Receivable	14,464	--	14,464	26,835
Taxes Receivable		--		
Local, St & Fed Agency Receivable		--		
Deposits		--		
Due From Other Funds		--		
Prepaid Expense		--		
Property, Plant & Equipment		--		
Deferred Outflows		--		
TOTAL ASSETS AND OTHER DEBITS:	12,133,553		12,133,553	12,828,585
Liabilities, equity and other credits				
LIABILITIES:				
Accounts Payable		--		
Employee Benefits Payable		--		
Payroll Taxes Payable		--		
Accrued Liabilities		--		
Deferred Revenue		--		
Long Term Debt		--		
Net Pension Liability		--		
Net OPEB Liability		--		
Lease Liab - Long Term		--		
Deposits Payable		--		
Due To Other Funds		--		
Scholarships-Designated Donations		--		
Scholarships-Non-designated		--		
Donatio		--		
Deferred Inflows		--		
TOTAL LIABILITIES:				
EQUITY AND OTHER CREDITS:				
Control Accounts		--		
Fund Balances		--		
Prior Year Fund Balance		--		
Endowment Fund-Original		--		
Endowment Fund-Income		--		

Wharton County Junior College
 Combined Balance Sheet--All Fund Types and Account Groups
 31-May-2023
 (With comparative totals for 31-May-2022)
 (amounts expressed in dollars)

Fiduciary Fund Types

	Endowment Funds	Quasi Endowment Fund	Current Year 2023	Prior Year 2022
<hr/>				
EQUITY AND OTHER CREDITS:				
FB Professional Development		--		
FB Salary Equity		--		
FB Capital Equipment		--		
FB Investment Gain And Loss		--		
Fund Balance Receivables		--		
Reserved-Undesignated		--		
FBTC Operating Fund Balance		--		
Plant Fund Balance		--		
Bond Fund Balance		--		
Scholarship		--		
Fund Balance-Rounding Diff		--		
Fund Balances:				
Reserve for Encumbrance		--		
Fund Balance	12,133,553	--	12,133,553	12,828,585
Reserve For Operations		--		
TOTAL EQUITY AND OTHER CREDITS:	12,133,553		12,133,553	12,828,585
TOTAL LIABILITIES, EQUITY AND OTHER CREDITS:	12,133,553		12,133,553	12,828,585
	=====	=====	=====	=====

Wharton County Junior College
 Combined Balance Sheet--All Fund Types and Account Groups
 31-May-2023
 (With comparative totals for 31-May-2022)
 (amounts expressed in dollars)

Account Groups

	Debt Retirement Bond Fund	Investment in Plant Fund	Unexpended Plant Fund	Repair and Replacement	Current Year 2023	Prior Year 2022
ASSETS and OTHER DEBITS:						
ASSETS:						
Cash	238	--	-6,784,920	6,872,555	87,873	125,160
Cash Investments	398,433	--	9,137,531	--	9,535,964	9,599,928
Accounts Receivable	--	--	12,412	--	12,412	20,049
Taxes Receivable	--	--	--	--	--	--
Local, St & Fed Agency Receivable	--	--	--	--	--	--
Deposits	--	--	--	--	--	--
Due From Other Funds	--	--	--	--	--	--
Prepaid Expense	--	--	--	--	--	--
Property, Plant & Equipment	--	46,665,837	--	--	46,665,837	46,753,480
Deferred Outflows	--	--	--	--	--	--
TOTAL ASSETS AND OTHER DEBITS:	398,672	46,665,837	2,365,023	6,872,555	56,302,087	56,498,617
Liabilities, equity and other credits						
LIABILITIES:						
Accounts Payable	--	--	--	--	--	--
Employee Benefits Payable	--	--	--	--	--	--
Payroll Taxes Payable	--	--	--	--	--	--
Accrued Liabilities	--	1,339,512	--	--	1,339,512	1,351,645
Deferred Revenue	--	--	--	--	--	--
Long Term Debt	--	365,584	--	--	365,584	365,584
Net Pension Liability	--	--	--	--	--	--
Net OPEB Liability	--	--	--	--	--	--
Lease Liab - Long Term	--	8,988,334	--	--	8,988,334	8,988,334
Deposits Payable	--	--	--	--	--	--
Due To Other Funds	--	--	--	--	--	--
Scholarships-Designated Donations	--	--	--	--	--	--
Scholarships-Non-designated	--	--	--	--	--	--
Donatio	--	--	--	--	--	--
Deferred Inflows	--	--	--	--	--	--
TOTAL LIABILITIES:		10,693,430			10,693,430	10,705,563
EQUITY AND OTHER CREDITS:						
Control Accounts	--	--	--	--	--	--
Fund Balances	--	--	--	--	--	--
Prior Year Fund Balance	--	--	--	--	--	--
Endowment Fund-Original	--	--	--	--	--	--
Endowment Fund-Income	--	--	--	--	--	--

Account Groups

	Debt Retirement Bond Fund	Investment in Plant Fund	Unexpended Plant Fund	Repair and Replacement	Current Year 2023	Prior Year 2022
EQUITY AND OTHER CREDITS:						
FB Professional Development		--	--	--		
FB Salary Equity		--	--	--		
FB Capital Equipment		37,601,558	--	--	37,601,558	36,086,793
FB Investment Gain And Loss		--	--	--		
Fund Balance Receivables		--	--	--		
Reserved-Undesignated		--	--	--		
FBTC Operating Fund Balance		--	--	--		
Plant Fund Balance		--	--	--		
Bond Fund Balance		--	--	--		
Scholarship		--	--	--		
Fund Balance-Rounding Diff		--	--	--		
Fund Balances:						
Reserve for Encumbrance		--	--	--		
Fund Balance	398,672	118,320	1,301,770	6,188,338	8,007,099	9,706,261
Reserve For Operations		--	--	--		
TOTAL EQUITY AND OTHER CREDITS:	398,672	37,719,878	1,301,770	6,188,338	45,608,657	45,793,054
TOTAL LIABILITIES, EQUITY AND OTHER CREDITS:	398,672	48,413,308	1,301,770	6,188,338	56,302,087	56,498,617

Memorandum Only

	Current Year 2023	Prior Year 2022
ASSETS and OTHER DEBITS:		
ASSETS:		
Cash	3,550,871	4,400,650
Cash Investments	44,691,761	42,234,573
Accounts Receivable	3,420,150	2,864,951
Taxes Receivable	562,185	568,195
Local, St & Fed Agency Receivable	421,946	1,389,738
Deposits		4,892
Due From Other Funds	300,000	117,022
Prepaid Expense		
Property, Plant & Equipment	46,665,837	46,753,480
Deferred Outflows	9,340,694	10,285,070
TOTAL ASSETS AND OTHER DEBITS:	108,953,444	108,618,569
Liabilities, equity and other credits		
LIABILITIES:		
Accounts Payable	76,911	82,289
Employee Benefits Payable	267,800	230,081
Payroll Taxes Payable	-5,549	-1,872
Accrued Liabilities	1,339,512	1,351,645
Deferred Revenue	2,745,495	2,536,691
Long Term Debt	365,584	365,584
Net Pension Liability	4,103,835	9,228,835
Net OPEB Liability	32,567,646	32,567,646
Lease Liab - Long Term	8,988,334	8,988,334
Deposits Payable	307,344	318,035
Due To Other Funds	300,000	117,022
Scholarships-Designated Donations	10,294	68,368
Scholarships-Non-designated	1,024,349	749,982
Donatio		
Deferred Inflows	9,710,668	6,185,814
TOTAL LIABILITIES:	61,802,223	62,788,454
EQUITY AND OTHER CREDITS:		
Control Accounts	5,048	370
Fund Balances		
Prior Year Fund Balance	-19,313,888	-19,412,977
Endowment Fund-Original		
Endowment Fund-Income		
FB Professional Development		
FB Salary Equity		
FB Capital Equipment	37,601,558	36,086,793
FB Investment Gain And Loss		

Wharton County Junior College
 Combined Balance Sheet--All Fund Types and Account Groups
 31-May-2023
 (With comparative totals for 31-May-2022)
 (amounts expressed in dollars)

Memorandum Only

	Current Year 2023	Prior Year 2022
Fund Balance Receivables	-	-
Reserved-Undesignated		
FBTC Operating Fund Balance		
Plant Fund Balance		
Bond Fund Balance		
Scholarship		
Fund Balance-Rounding Diff	-	-
Fund Balances:		
Reserve for Encumbrance	3,292,667	2,800,801
Fund Balance	25,565,836	26,355,129
Reserve For Operations		
TOTAL EQUITY AND OTHER CREDITS:	47,151,221	45,830,116
TOTAL LIABILITIES, EQUITY AND OTHER CREDITS:	108,953,444	108,618,569
	=====	=====