

Board of Education Goals 2021 - 2022 - DRAFT

Wood Dale School District 7

Presented - September 23, 2021



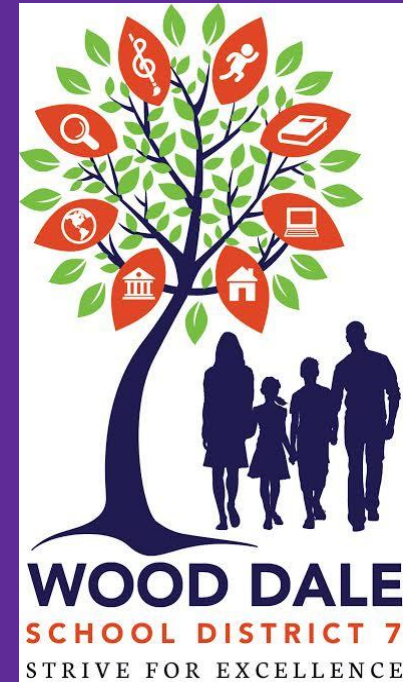
WOOD DALE

SCHOOL DISTRICT 7

STRIVE FOR EXCELLENCE

Wood Dale District 7 Vision Statement

We will be an exemplary school district. Our students will be resilient, lifelong learners who strive for excellence and become engaged learners.



Wood Dale District 7 Mission Statement

We will collaborate with all families to implement high quality instruction and provide engaging learning experiences, empowering each student to reach their full potential, in a safe and supportive environment.



In the area of STUDENT ACHIEVEMENT, the Board will ensure the staff has the resources needed to provide high quality instruction & engaging learning experiences for each student.

English Language Arts

- A. By June, 2022, 80% of students that are 4 year olds will be able to identify 12 letters using letter manipulatives in and around the classroom.
- B. By June 2022, 90% of kindergarten, 1st and 2nd grade students performing in the Phonics/Word Recognition Foundational Skills portion of the MAP Reading Fluency Assessment will improve their ZPD (Zone of Proximal Development) by at least 2 levels.
- C. By June 2022, using the Lucy Calkins Narrative Reading Progression rubric in the area of retelling/summary/synthesis within text, at least 70% of 3rd, 4th, and 5th graders will perform in the approaching or mastery range (administered in English).
- D. By June 2022, grades 6-8 will improve their average CER total score by 1.1 points from 5.4 to 6.5 on the 9 point CER Rubric.

In the area of STUDENT ACHIEVEMENT, the Board will ensure the staff has the resources needed to provide high quality instruction & engaging learning experiences for each student.

Math

- A. By June 2022, 80% of students that are 4 year olds will be able to connect numerals 1-10 to their quantities.
- B. By June 2022, 80% of students that are 3 year olds will be able to identify any 4 basic shapes (circle, square, triangle, rectangle, oval, star) while playing Shape Bingo.
- C. By June 2022, 80% of K-2 grade students will perform in the approaching or mastery range in the area of word problems.
- D. By June 2022, 80% of 3-5 grade students will will perform in the approaching or mastery range in the key fraction standards.
- E. By June 2022, grades 6-8 will improve their average Math Response total score by 1.4 points from 4.6 to 6.0 on the 9 point Math Response Rubric.

In the area of FAMILY & COMMUNITY RELATIONS, the Board will provide the staff with the resources needed to increase District 7's level of engagement with all school families and the local community.

- A. Provide family/parent education information & resources to assist families in adapting and supporting their students with learning and social emotional support during the pandemic.
- B. Continue to ensure the community is aware of the academic programs and accomplishments of the Wood Dale District 7 students and staff.

In the area of FINANCE & OPERATIONS, the Board will ensure the budget and financial plan is aligned with the district's vision, mission & goals, while respecting the financial resources of the community.

- A. Maintain a Financial Score of **Recognition** for FY22.
- B. Improve Procurement in District Purchases by: (1) Implementation of a Purchase Card (p-Card) system and (2) joining government based cooperative groups to increase district purchasing power.
- C. Complete 40% of the 10 Year Life Safety Priority List by the end of FY22.
- D. Review & select projects to complete from the operations & maintenance plan, to ensure an engaging and safe learning environment for all students and staff.