

# BURLESON EARLY EDUCATION CENTER

March 18, 2025



# OUR TEAM

Dr. Mandy Hinojos

DIRECTOR OF PLANNING AND SCHOOL CHOICE

Beatris Mata

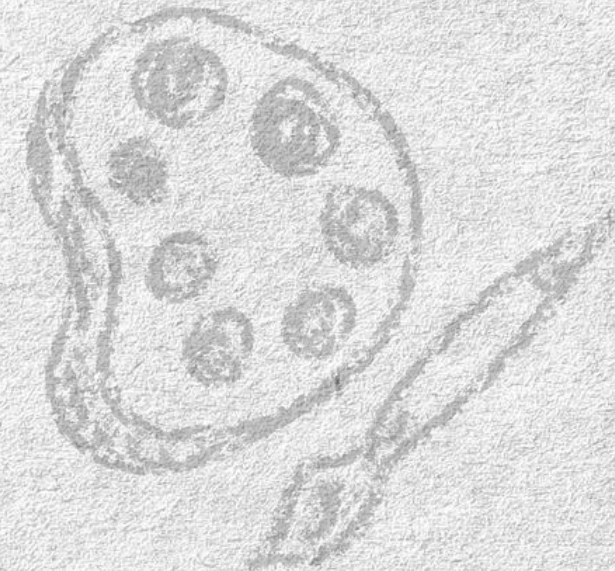
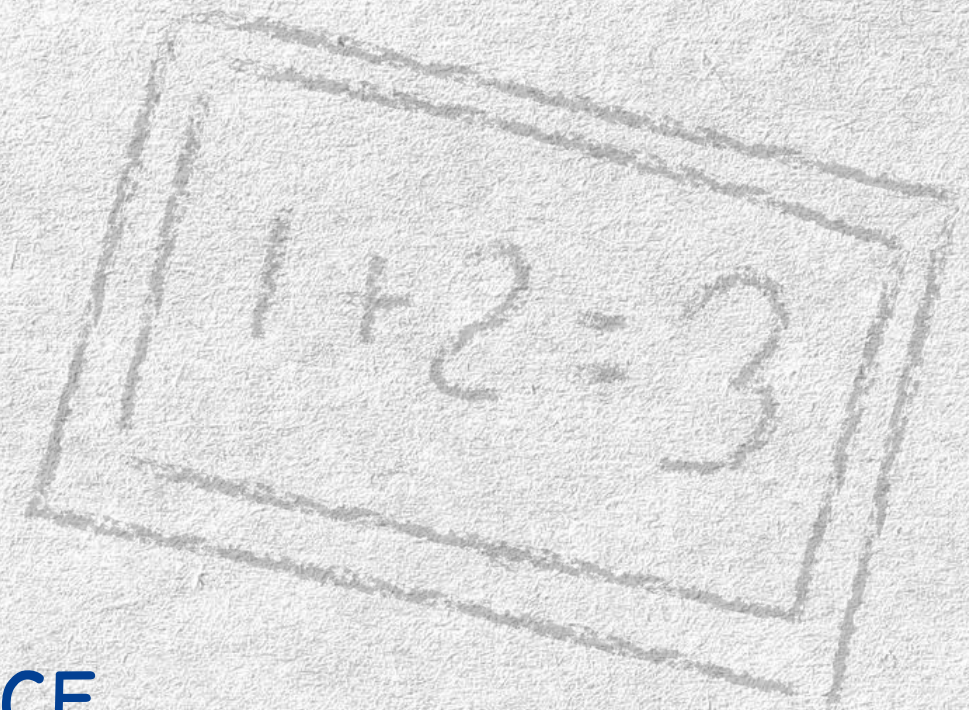
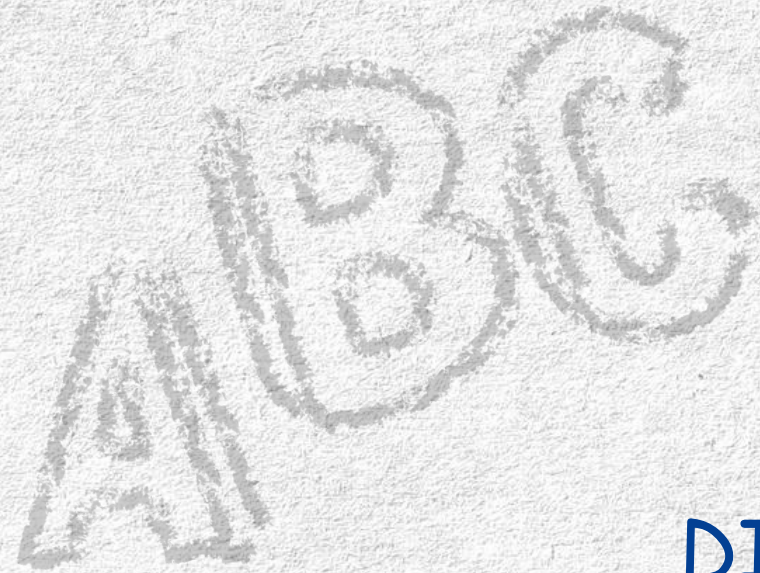
DIRECTOR OF EARLY CHILDHOOD EDUCATION

Dr. Andrea Moreno-Hewitt

EXECUTIVE DIRECTOR OF CURRICULUM & INSTRUCTION

Alicia Syverson

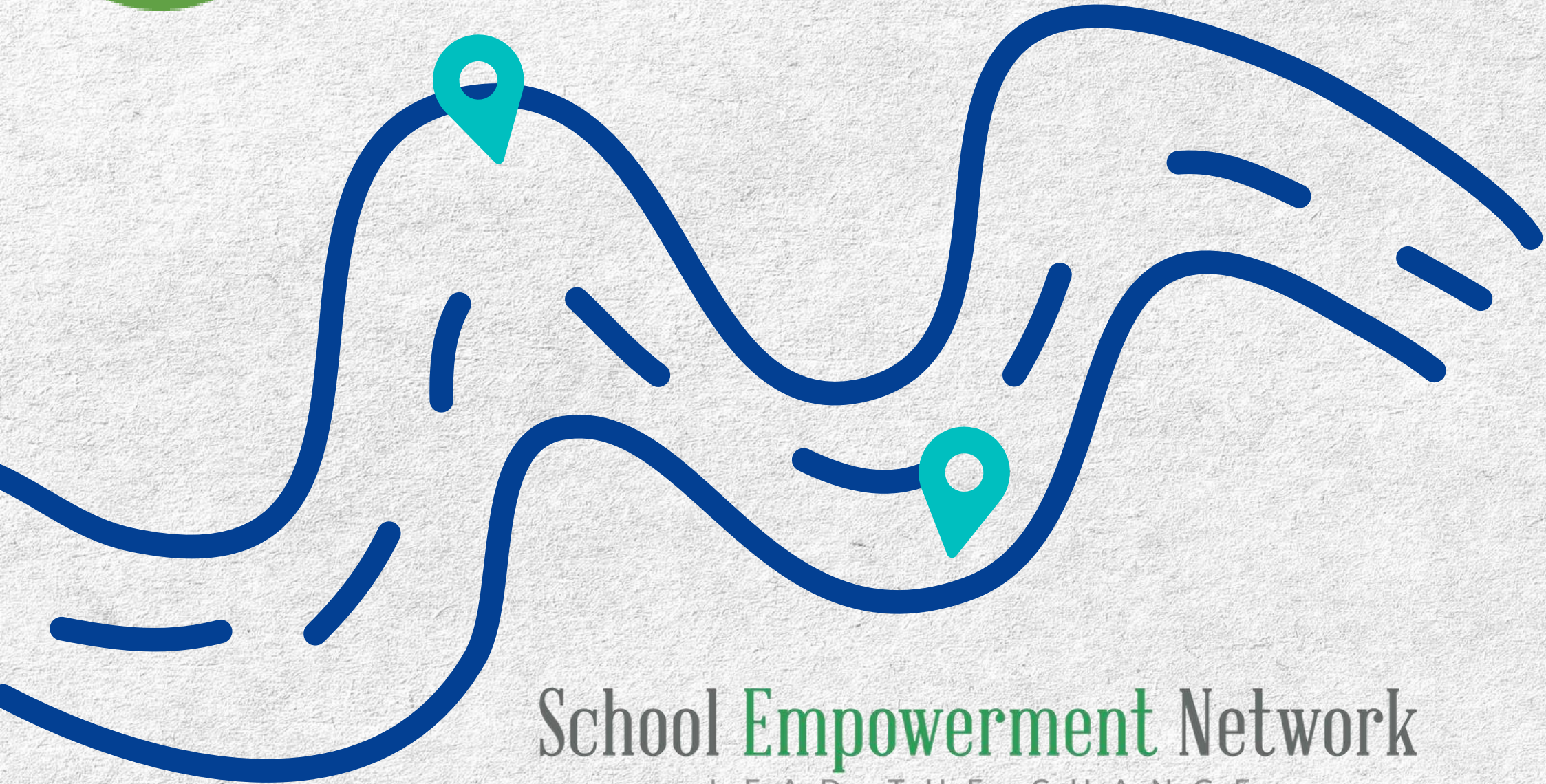
ASSOCIATE SUPERINTENDENT OF STUDENT AND SCHOOL SUPPORT



# REOPENING READINESS



CENTER FOR  
**SCHOOL ACTIONS**



School **Empowerment** Network  
— LEAD THE CHANGE —

# WHY PREK: CASE FOR CHANGE

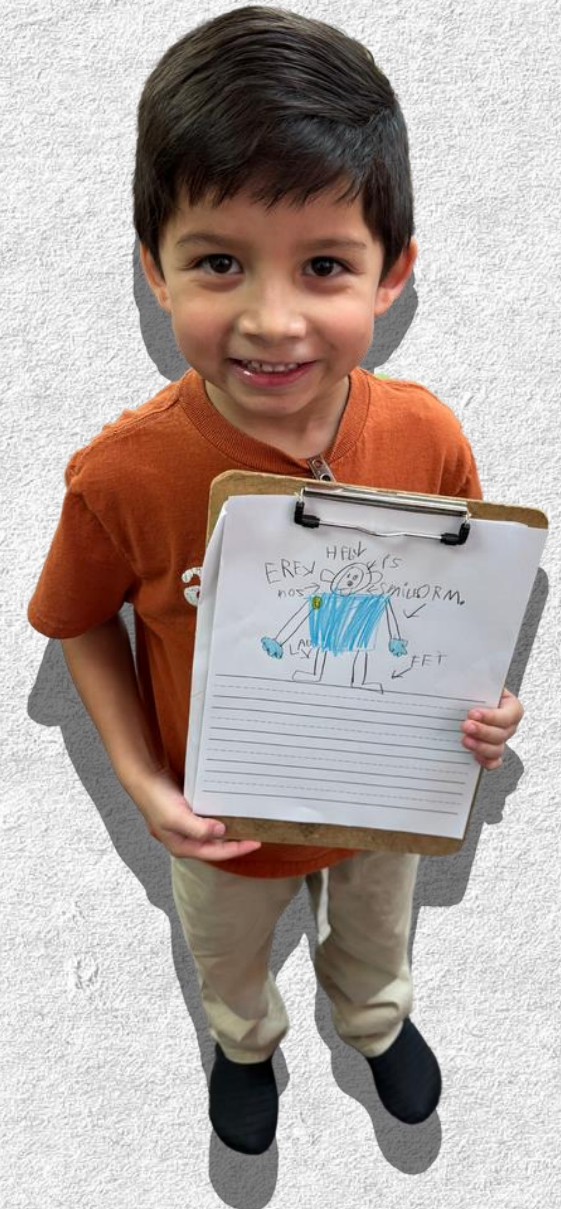
65% of the students who attended PreK in ECISD are Kindergarten Ready this 2024-25 School Year

Odessa YMCA

Carver EEC

Lamar EEC

13 Elementary Campuses





# UNLOCKING OPPORTUNITIES FOR EARLY LEARNERS

2022-23 SY

22% of Eligible 3-year-olds Enrolled  
74% of Eligible 4-year-olds Enrolled

72% of ECISD's PreK Student Population  
Qualified for FREE PreK



# UNLOCKING OPPORTUNITIES FOR EARLY LEARNERS

Burleson Early Education Center  
"Create New"

Provide Seats to Serve Eligible and Ineligible Children

~Half Day PreK 3 Program

~Full Day PreK 4 Program

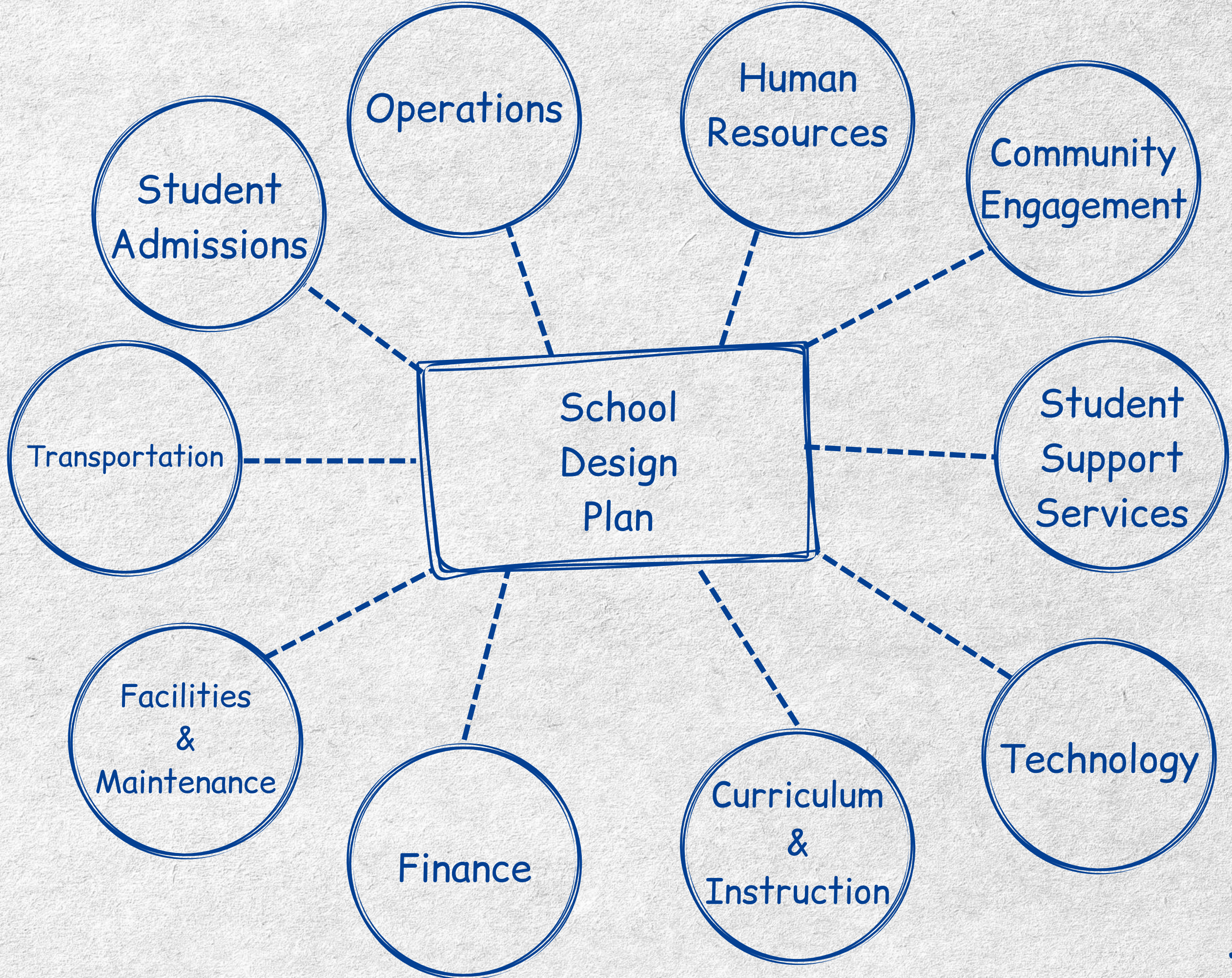
Provide Access in Underserved Areas

Help Close Early Learning Gaps

High Quality Environment



# SCHOOL DESIGN PLAN: A TEAM EFFORT



# INNOVATION THROUGH PROGRAMMING

"At Burlison EEC, purposeful play meets proven practice to ignite every child's academic journey."

PreK Instructional Framework

Frog Street Curriculum

Dual Language Services

Special Education Services

MTSS Support

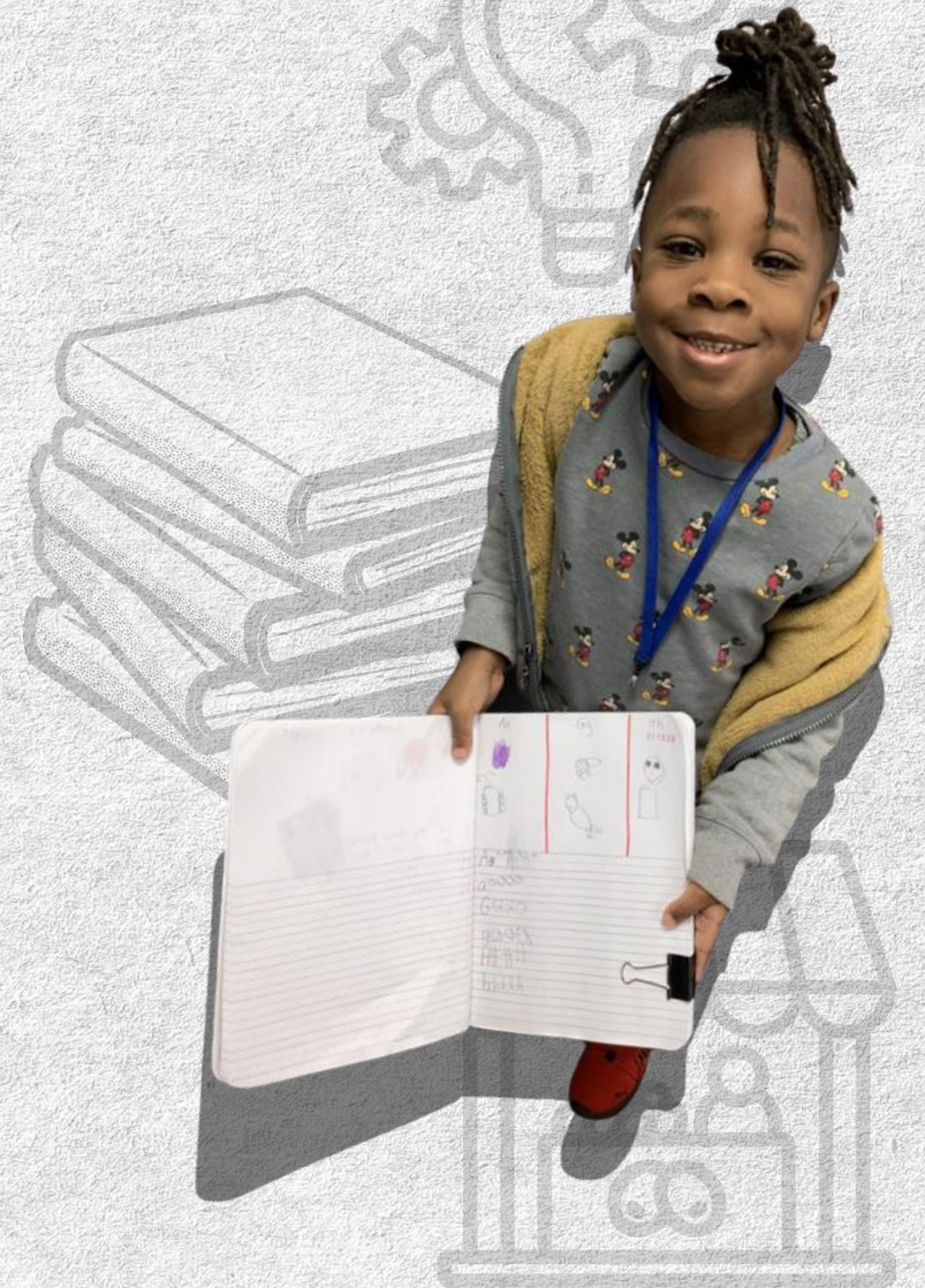
Oral Language Lab

Fine Arts

Library

Market- Dramatic Play

STEM Lab





# KEY ACADEMIC TARGETS

At or Above 80% Proficiency in Phonological Awareness

At or Above 80% Proficiency in Mathematics

At or Above 85% Proficiency in Social-Emotional Measures

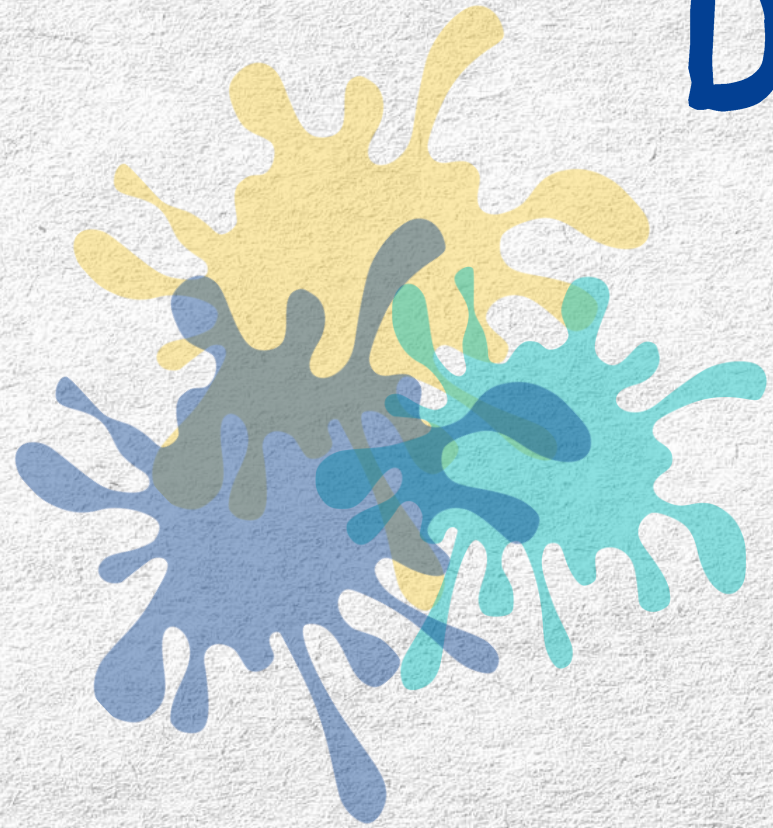


# LEARNING SPACES

Library Design - Digital Learning  
Classroom Furniture - Teacher Input  
Classroom Resources - Teacher Input



# DEFINING OUR SCHOOL SPIRIT



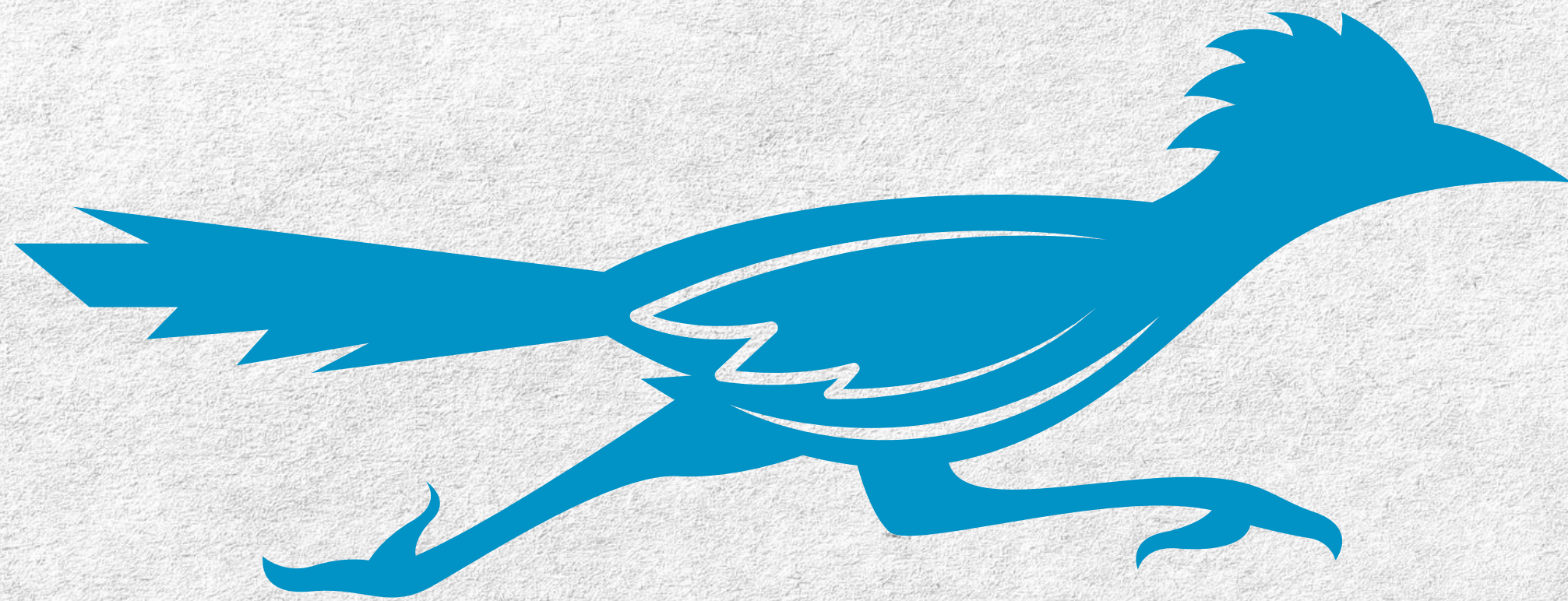
School Mascot - Committee  
School Colors - Committee





**BURLESON MASCOT  
&  
SCHOOL COLORS**

# MASCOT SCHOOL COLORS



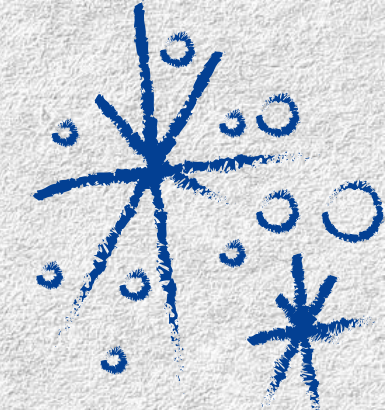
SW 6958

Dynamic Blue



SW 6910

Daisy

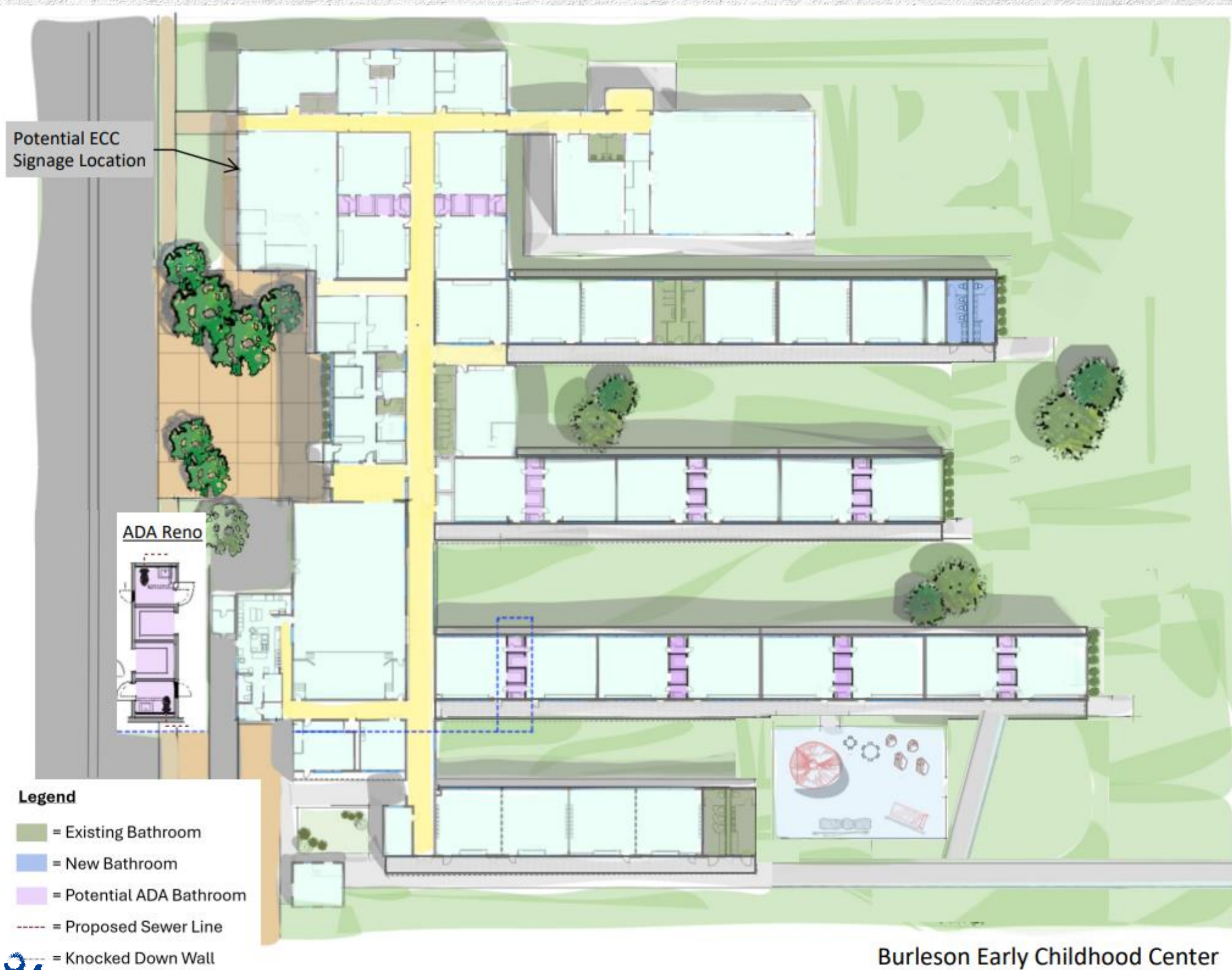


# CAMPUS READINESS

Staffing Preparations

Building Preparations

- Flooring
- Plumbing Upgrades
- Paint
- Playground Installation
- Furniture Assembly



# WELCOMING STUDENTS

Year 1 (2025/2026)

300 Students

PK3  
Half-Day

PK4  
Full-Day

Special Education Services  
Bilingual Services



# EXPANSION

Year 2 & Beyond

600 Students

PK3  
Half-Day

PK4  
Full-Day

Special Education Services  
Bilingual Services







# FAMILY EVENTS

Communications Plan:

Press Release, Outdoor Banners, Digital Billboard, Posters,  
Roll and Read Event, Healthy Kid Day, Registration Support

Calling All Families!

Ribbon Cutting and Campus Tours

Celebrations:

Lakeshore Spotlight!

Atmos Energy Grant to Support Literacy





# QUESTIONS?

