



WE EXPECT EXCELLENCE



WE INNOVATE



WE EMBRACE EQUITY



WE COLLABORATE

---

## TRANSPORTATION SUPPLEMENTAL PLAN FOR 2016/2017

### **POLICY ISSUE/SITUATION**

Oregon Revised Statute (ORS 327.006) establishes criteria for reimbursement to school districts for approved transportation costs. The primary component of these approved costs is daily home-to-school transportation for elementary students living over 1-mile from school and secondary students living over 1.5-miles from school. The statute also includes cost reimbursement for students living within the 1 and 1.5 mile limitations requiring transportation due to health or safety reasons. This is predicated upon the local school board adopting a resolution identifying these groups or categories of students through the use of a Supplemental Plan.

### **BACKGROUND INFORMATION**

A Supplemental Plan Committee consisting of representative from Washington County Land Use, Washington County Safe Routes to School, BSD Public Safety, BSD Transportation, City of Beaverton Traffic Office, and Washington County Sheriff's Office meet annually to evaluate planned and completed road and pedestrian access improvements within the Beaverton School District boundaries and determine their effects on BSD student transportation. In many cases, road and sidewalk improvements will have a positive effect on accessibility to schools by creating safe walking routes for students living nearby who are presently transported by school buses.

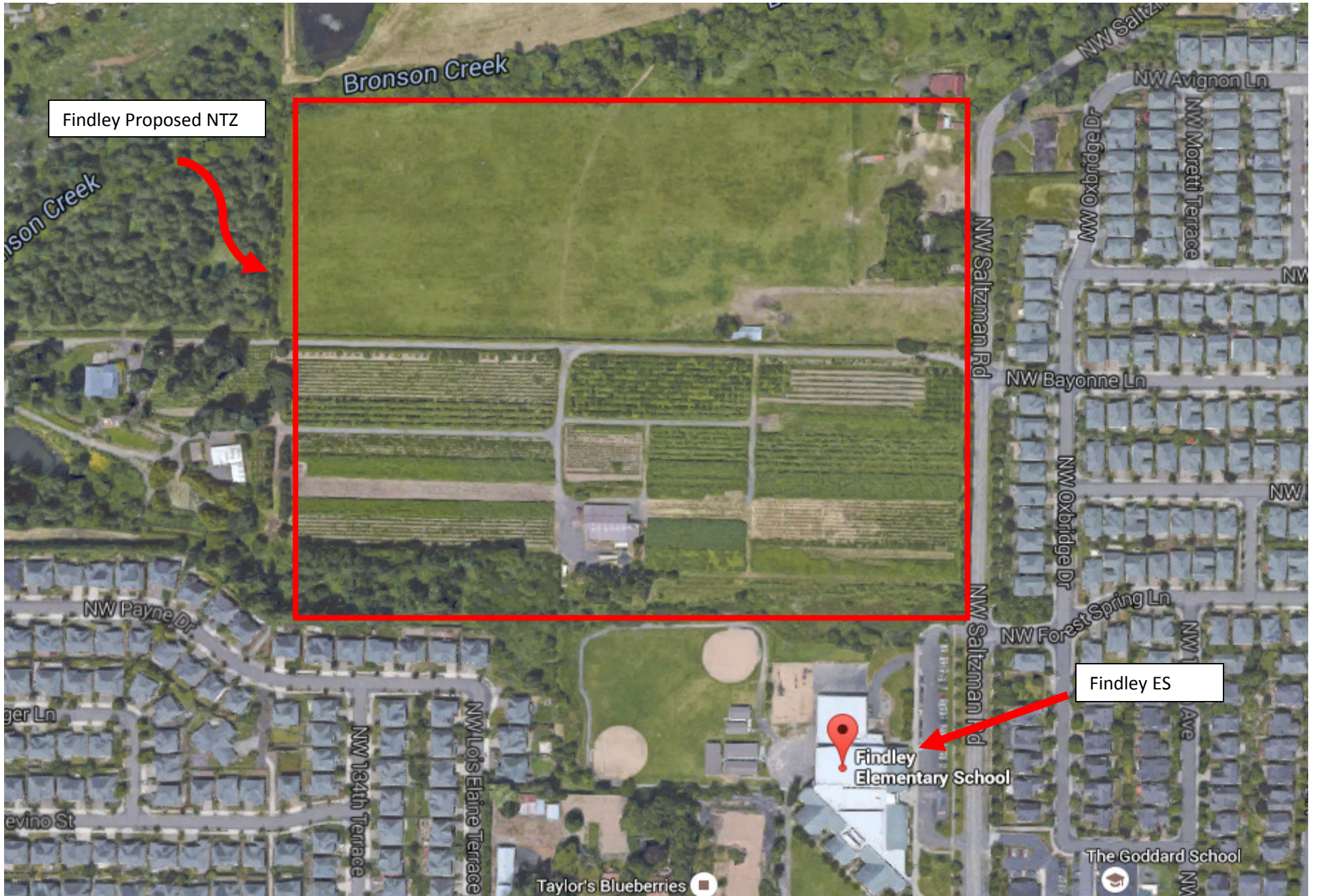
### **PROPOSED ACTION**

Re-designation of two areas from Hazard Zones to Non-Transportation Zones as outlined below:

- Springville ES: North side of NW Brugger Rd from Joss Ave to NW 158<sup>th</sup> Ave. *There is no impact to current students as there are no homes in this area.* WA County confirms planned residential development in this tract by September 2017. Development will include road improvements, sidewalk additions, and a maximum speed limit of 35 mph which will provide for a safe walking path to Springville K8.
- Findley ES: West side of NW Saltzman Rd, north of Findley ES and south of Bronson Creek. *There is no impact to current students as there are no homes in this area.* Residential development has just begun and improvements will include the addition of sidewalks on the west side of NW Saltzman road to the school providing a safe walking path to Findley students.

### **RECOMMENDATION**

**16-637** Beaverton School District staff recommends School Board approval of the proposed Transportation Supplemental Plan for the 2016/2017 school year.



Findley Proposed NTZ

Findley ES

Findley Elementary School

Bronson Creek

NW Saltzman Rd

NW Avignon Ln

NW Moretti Terrace

NW Oxbridge Dr

NW Bayonne Ln

NW Oxbridge Dr

NW Forest Spring Ln

NW Payne Dr

NW 134th Terrace

NW Lois Elaine Terrace

NW Saltzman Rd

NW Saltzman Rd

NW 1 Ave

Taylor's Blueberries

The Goddard School



*Findley 2016-2017*

- Attendance Area
- Hazard Area
- No Transportation Zone
- Proposed NTZ

