

EXHIBIT "A"

GRAPHIC SCALE

1"=50'



N



CITY OF CONVERSE
20" WATERLINE ESMT.
VOL. 6950, PG. 1689
O.P.R.R.P.B.C.T.

ANTONIO AMADOR
SURVEY NO. 312
ABSTRACT NO. 1177

A F. H. COERS
REMAINDER OF A
CALLED 80 ACRES
VOL. 282, PG. 62
D. R. B. C. T.

CENTERLINE OF E. C. S.
CURVE INFORMATION
PI STA. 163+26.25
N= 13729748.05
E= 2187918.17
D= 6°01'52"
A= 42°52'58" (LT)
R= 950.00'
T= 373.09'
L= 711.02'
CB= S06°31'16"E
CD= 694.54'

UNITED GAS UTILITY
PIPELINE COMPANY ESMT.
VOL. 2891, PG. 98
D. R. B. C. T.

CENTERLINE OF E. C. S.
CURVE INFORMATION
PI STA. 173+12.05
N= 13728846.29
E= 2188396.89
D= 5°30'33"
A= 43°25'13" (RT)
R= 1040.00'
T= 414.08'
L= 788.14'
CB= S06°15'08"E
CD= 769.41'

JUDSON INDEPENDENT SCHOOL
DISTRICT NEW CONVERSE
ELEMENTARY SCHOOL
LOT 1, BLOCK 1
CALLED 22.14 ACRES
VOL. 9577, PG. 48
P. R. B. C. T.

EASEMENT AGREEMENT TO
CITY OF CONVERSE
VOL. 13958, PG. 1216
O.P.R.R.P.B.C.T.

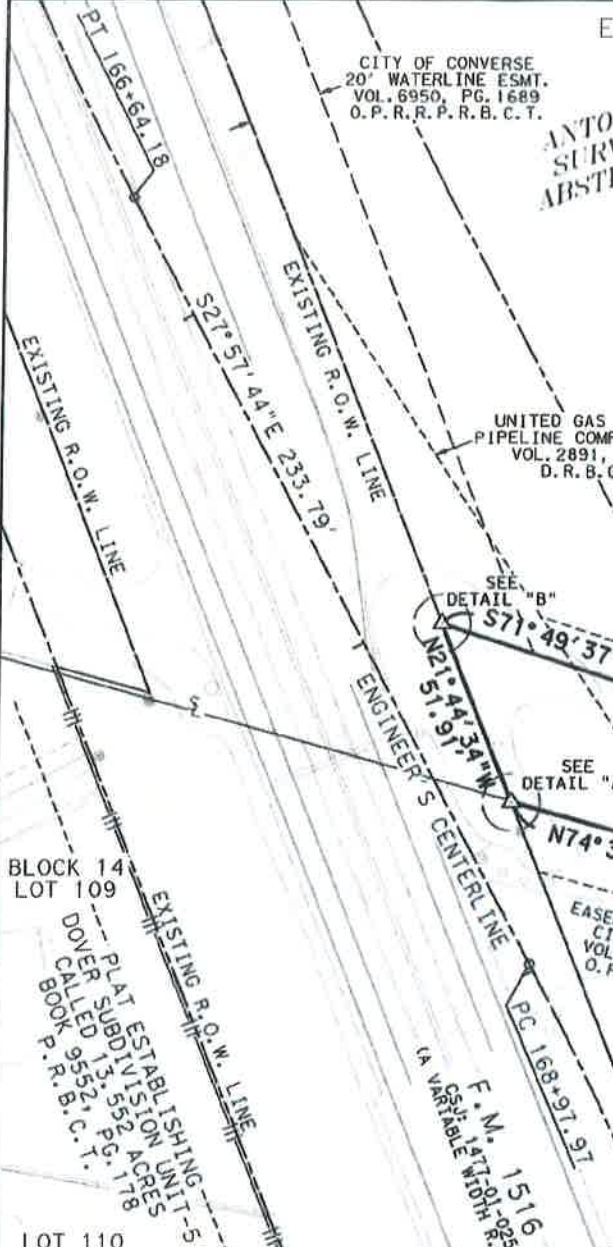
ELECTRIC LINE
R.O.W. EASEMENT TO
CITY OF SAN ANTONIO
VOL. 14107, PG. 1985
& VOL. 14172, PG. 2470
O.P.R.B.C.T.

P.O.B.
STA. 169+20.37
O/S 85.00' LT
N=13729230.36
E=2188288.94

ELECTRIC LINE R.O.W.
AGREEMENT TO
CITY OF SAN ANTONIO
VOL. 14107, PG. 1948 &
VOL. 14172, PG. 2464
O.P.R.B.C.T.

P.O.C.
1" IRON PIPE
STA. 170+38.70
O/S 255.75' LT
N=13729172.00
E=2188500.13

TEXAS CONFERENCE
ASSOCIATION OF
SEVENTH
DAY ADVENTISTS
TRACT III
CALLED 1.29 ACRES
VOL. 10580, PG. 2161
O.P.R.R.P.B.C.T.



LEGEND

- TXDOT TYPE I MONUMENT FOUND - AS NOTED
- TXDOT TYPE II MONUMENT FOUND - AS NOTED
- ⊠ 1/2" IRON ROD WITH ALUMINUM CAP MARKED "TX DEPARTMENT OF TRANSPORTATION R.O.W. MONUMENT" SET**
- 1/2" IRON ROD FOUND - AS NOTED
- ⊕ PK NAIL WITH SHINER STAMPED "TXDOT" SET IN CONCRETE ** - AS NOTED
- ⊗ *X" FOUND IN CURB
- △ CALCULATED POINT
- ⊙ FIRE HYDRANT
- ⊖ POWER POLE
- ⊗ WASTE WATER MANHOLE
- O.P.R.R.P.B.C.T. OFFICIAL PUBLIC RECORDS REAL PROPERTY OF BEXAR COUNTY, TEXAS
- O.P.R.B.C.T. OFFICIAL PUBLIC RECORDS OF BEXAR COUNTY, TEXAS
- D.R.B.C.T. DEED RECORDS OF BEXAR COUNTY, TEXAS
- P.R.B.C.T. PLAT RECORDS OF BEXAR COUNTY, TEXAS
- P.O.C. POINT OF COMMENCEMENT
- P.O.B. POINT OF BEGINNING
- R.O.W. RIGHT OF WAY
- PROPERTY LINE
- OVERHEAD ELECTRIC
- APPROXIMATE LOCATION OF SURVEY LINE
- ACCESS DENIAL LINE



HALFF

9500 AMBERGLEN BLVD
BLDG F, SUITE 125
AUSTIN, TEXAS 78729-1102
TEL (512) 777-4600
FAX (512) 252-8141
TBPLS FIRM NO. 10029607



REVISION

NO.	DATE	DESCRIPTION
-	-	-
-	-	-
-	-	-

PARENT TRACT ACREAGE	ACQUISITION	REMAINDER
**N0, 506 AC. (22,025 SQ. FT.)	168+62.17 TO 169+20.37 0.083 AC. LT 3,593 SQ. FT.	0.423 AC. RT 18,432 SQ. FT.

PARCEL PLAT SHOWING PARCEL 25

SCALE	FED. RD. DIV. NO.	STATE	COUNTY	HIGHWAY NO.		
1" = 50'	6	TEXAS	BEXAR	FM 1516		
DATE	STATE DISTRICT NO.	FEDERAL AID PROJECT NO.	CONTROL NO.	SECTION NO.	JOB NO.	PAGE NO.
03/2019	15		1477	01	044	4 OF 5