

Parkrose Secondary Vision

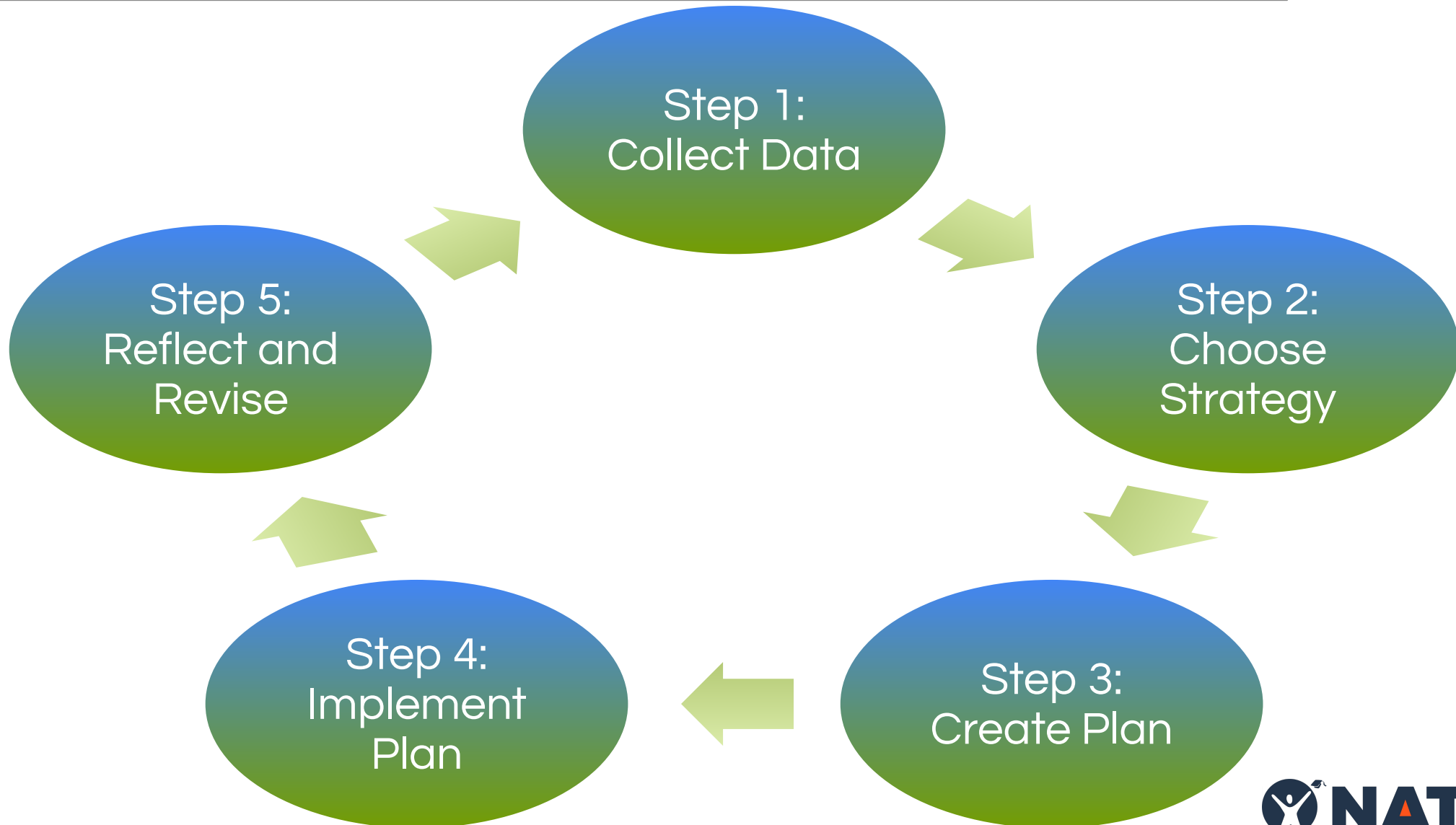
All students will graduate with the skills, opportunities, and supports to be their authentic selves, succeed in the college and career path of their choice, and have a positive impact on the global society.



Academic outcomes will not change until instruction changes. Instruction dictates student achievement. Not poverty, not culture, not race, not disability, not parent involvement or any other factors. It's tier one instruction.

-Dr. Kahkari Taylor

Strategic Implementation Cycle



Systematic Implementation Plan

Train

Provide ongoing systematic professional development

Implement

*100% of teachers use the strategy in instruction -
continued professional development focus*

Maintain

*100% of teachers regularly use strategy in instruction-
differentiated professional development*

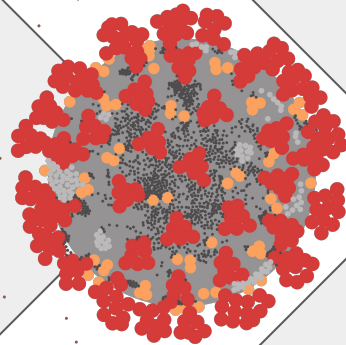
Refine

*Strategy is part of school-wide culture-
support is provided as needed*

	2009-2010	2010-2011	2011-2012	2012-2013	2013-2014	2014-2015	2015-2017	2017-2019	2019-2020	
Binders	<i>Train/Implement</i>					<i>Maintain/Refine</i>				
Cornell Notes/Digital/FNT	Train	<i>Implement</i>		<i>Maintain/Refine</i>			<i>Train/Implement</i>			
Reading Strategies/Digital		Train	<i>Implement/Maintain</i>		Refine	Train	<i>Implement/Maintain</i>			
Planners			<i>Train/Implement</i>			<i>Maintain/Refine</i>				
Philosophical Chairs/Socratic		Train		<i>Implement/Maintain</i>			Refine			
Interactive Notebook				<i>Train/Implement</i>			<i>Maintain/Refine</i>			
Constructed Response				Train	<i>Implement/Maintain</i>			Refine		
Collaborative Study Groups	<div>Parkrose Middle School</div> <div>2009-2020</div>						Train	<i>Implement/Maintain</i>		
Writing to Learn								Train	<i>Implement</i>	
Inquiry									Train	

	2009-2015	2015-2016	2016-2017	2017-2018	2018-2020
Cornell Notes	Train		Implement/Maintain/Refine		
Critical Reading Strategies	Train		Implement/Maintain/Refine		
Socratic Seminar/Philosophical Chairs	Train		Implement/Maintain/Refine		
Interactive Notebook		Train	Implement/Maintain/Refine		
Constructed Response and Writing to learn			Train	Maintain/Refine	
Collaborative Study Groups	Parkrose High School 2009-2020			Train	Maintain
Inquiry					Train/Implement

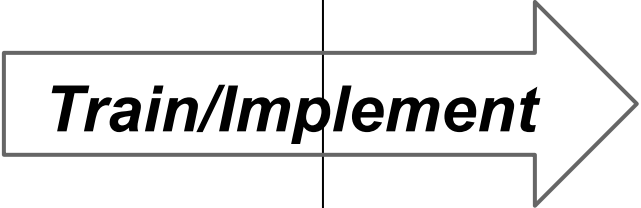


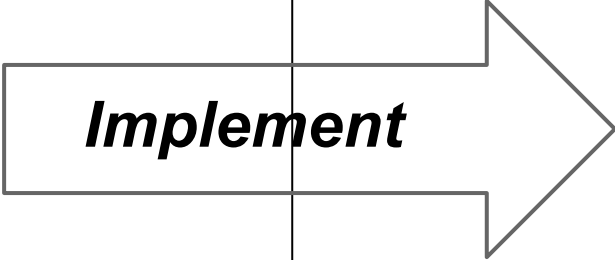
2009 - 3/13/2020



Now

Step 3: Create a Plan

Implementation Plan

	Year One	Year Two	Year Three	Year Four	Year Five
Focused Notes	 <i>Train/Implement</i>		 <i>Maintain/Refine</i>		
Critical Reading		 <i>Train</i>	 <i>Implement</i>		