

2026 Reliability Action Plan

Securing Michigan's Electric Grid

March 26, 2026

Greg Salisbury, Senior Vice President of Electric Distribution
Kelly Hall, Senior Vice President of Regulatory and Legal Affairs



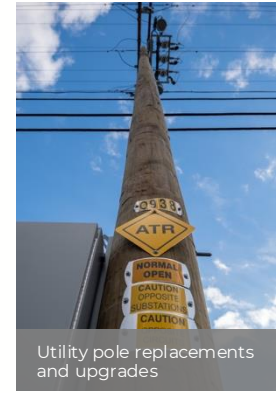
Reliability Action Plan

- **What it is:** Dollars that power near-term projects to **secure and modernize the grid.**
- **What it delivers:** The engine for our Reliability Roadmap — **fewer outages** and **faster restoration.** Goal: No customer loses power more than 24 hours.
- **How we execute:** Targeted **tree trimming, stronger poles, smart technology** and **enhanced cybersecurity.**



Progress in 2025

- **3 new substations** and **7 major projects** to support growth and limit outages.
- **32,000 poles replaced or upgraded** to improve resiliency in severe weather.
- **26,000 miles inspected** and **12,000 sensors installed** for earlier issue detection.
- **8,000 miles of line clearing** to address the **#1 outage cause: trees**.



Public Review and Approval



June 2025:

Filed our request to fund reliability upgrades.

June 2025 to March 2026:

Open, contested process with public, customer and business groups, Attorney General, MPSC staff, and Administrative Law Judge participation.

Expected March 27, 2026:

MPSC decision authorizing funding for new grid improvements.

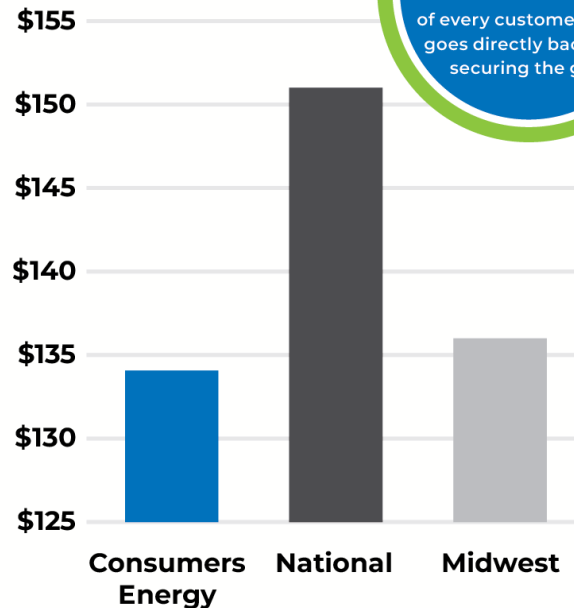
May 1, 2026:

New customer rates take effect.

Customer Bills and Investment

- **Average monthly bill: \$134** last year, **12% below** the national average and **below** the Midwest average.
- **Electric rate is 3¢ above** the national average. We focus on **bills**, the real impact on households.
- **Bill growth of 10%** since 2021 as we invest to reduce outage frequency and duration.
- About **75¢ of every new dollar** goes **directly into the grid**.

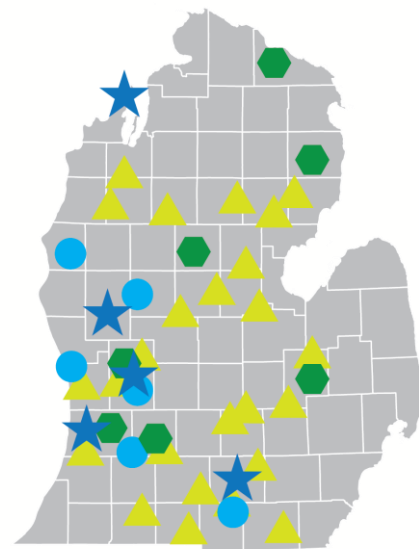
Average Customer Electric Bill



About
75¢
of every customer dollar
goes directly back into
securing the grid.

What's Next to Strengthen Reliability

- **Tree clearing** on a five-year timetable for all low-voltage lines. Plan to **double annual miles** from 8,000 to **16,000 by 2030**.
- **Burying power lines** where it delivers value. Underground lines can improve reliability by **90% or more**.
- **Sensors and automation** to detect and isolate issues, often **before customers notice**.
- **Fixing the worst-performing circuits** with targeted rebuilds.
- **Local investments:** Making upgrades in population areas that are large (**Kent, Genesee**) and small (**Allegan, Barry, Presque Isle, Alcona, Clare**)



- ★ Burying Electric Lines
- ▲ Forestry Corridor
- ⬡ Community Investment
- Circuit Rebuild

Questions and Next Steps

- Our focus: **Fewer outages.**
Faster restoration.
- If approved on March 27, we **start immediately** on the priority projects outlined today.

