



HAAS HALL ACADEMY

STARR SCHOLAR CENTER

3880 NORTH FRONT STREET

FAYETTEVILLE, AR 72703.5130

(479) 966.4930 | (479) 966.4932 - FAX | HAASHALL.ORG

EVERY SCHOLAR, EVERY DAY - COLLEGE BOUND

Tuesday, September 13, 2016

Alexandra Boyd, Charter School Program Advisor
Arkansas Department of Education
Four Capitol Mall
Little Rock, AR 72201

RE: Amendment Requests

Dear Ms. Boyd:

Please allow this communication to serve as Haas Hall Academy's request for amendment changes to our existing Fayetteville charter. As part of this request, we set forth three specific requests.

1. **Replicate our Fayetteville campus into the Historic Lane Hotel.** The Historic Lane Hotel located in downtown Rogers is the proposed site for our Rogers campus. The Lane Hotel is a National Register property that is currently being restored to function as a state-of-the-art educational facility. Our most recent lottery admitted less than 12% of the applicants, so we believe there is substantial demand in the community to expand. This opportunity to begin in the fall of 2017.
2. **Sibling Admission Preference for Rogers.** As part of our current request we also seek to affirmatively invoke Arkansas Code Annotated §6-23-306(14)(C) allowing enrollment preferences for siblings of enrolled scholars at our proposed Rogers location in order to have clarity for all.
3. **Replicate current waivers at existing campuses for Rogers.** To ensure fidelity with the proven academic and operational models at Haas Hall Academy, we request that all waivers currently in place at existing approved Haas Hall Academy locations be granted for our proposed Rogers location.

Haas Hall Academy fulfills the requirements of Ark. Code Ann. §6-23-304(d)(1) and (d)(2) to be granted a license by the Authorizer. Haas Hall Academy has demonstrated academic success as defined by the State Board for all public schools; and has never been subject to any disciplinary actions by the Authorizer; been classified as in academic or fiscal distress; nor has it had its open-enrollment public charter school placed on charter school probation or suspended or revoked under Ark. Code Ann. §6-23-105.

I thank you in advance for your assistance with this matter.

Sincerely,

Dr. Martin W. Schoppmeyer, Jr.
Founder and Superintendent of Schools
MWS/hpt

Attachment



HAAS HALL ACADEMY

STARR SCHOLAR CENTER

3880 NORTH FRONT STREET

FAYETTEVILLE, AR 72703.5130

(479) 966.4930 | (479) 966.4932 - FAX | HAASHALL.ORG

EVERY SCHOLAR, EVERY DAY - COLLEGE BOUND

TABLE OF CONTENTS

Amendment Request Form.....	3
Narrative	4
Facilities Utilization Agreement.....	7
Budget Projections	8
Race/Grade and Free/Reduced Enrollment.....	10
Map of Current Location.....	11
Map of Proposed Location.....	12
Desegregation Analysis.....	13
Sibling Policy	14
Current Waivers	15



ARKANSAS
DEPARTMENT
OF EDUCATION

CHARTER AMENDMENT REQUEST FORM

Charter Name: Haas Hall Academy

LEA Number: 7240700 Phone Number: (479) 966.4930 Submission Date: 08/31/2016

Charter Leader: Dr. Martin W. Schoppmeyer, Jr.

Email Address: MartinSchoppmeyer@haashall.org

Type of Amendment Requested:

Add a new campus

Address 121 W. Poplar

Rogers, AR 72756

School district in which the campus will be located Rogers



HAAS HALL ACADEMY

STARR SCHOLAR CENTER

3880 NORTH FRONT STREET

FAYETTEVILLE, AR 72703.5130

(479) 966.4930 | (479) 966.4932 - FAX | HAASHALL.ORG

EVERY SCHOLAR, EVERY DAY - COLLEGE BOUND

NARRATIVE

I. Educational Need

Haas Hall Academy is a multiple national award-winning model of how a charter school can strengthen communities, inspire innovation, and be a catalyst for the renewal of expectations for public education. Haas Hall Academy is ranked the #1 public high school in Arkansas for the fifth consecutive year by *U.S. News & World Report* and ranked #19 in the nation by *Newsweek* magazine.

In response to the consistent accomplishments of our scholars and the expertise and work ethic of our faculty, demand for our rigorous academic and distinctive social programs well surpasses our current ability to educate more scholars in Northwest Arkansas. The centrally located Lane Hotel in downtown Rogers will allow many of our scholars to utilize the trail system to walk and ride their bikes to school. Public transportation is also available.

Haas Hall Academy was encouraged to replicate in Rogers. The demand for our programs far exceed our ability to accept new scholars. Only 12% of applicants for our 2016.2017 lottery were able to enroll in a Haas Hall Academy campus this year. An additional location in downtown Rogers will continue to make our programs more accessible.

Haas Hall Academy representatives met with Rogers Public School officials to discuss possible partnerships and ways of working together for the sake of all students. Haas Hall Academy is committed to provide our educational option to additional families in Northwest Arkansas.

Haas Hall Academy is the only school in Washington and Benton Counties to receive an 'A' ranking from the Arkansas Department of Education's accountability system. Based on the ACT Aspire scores Haas Hall Academy had the highest test scores for all grades we serve, 7-12.

Haas Hall Academy's college readiness index was the highest in Arkansas. Haas Hall Academy Bentonville is second in the state. The percentage who met all four readiness benchmarks was 48.3%. Our scores were as follows:

Haas Hall Academy

Math Average ACT Score, 26.9

Math % Met Readiness Benchmark, 94.4%

English Average ACT Score, 29.8

English % Met Readiness Benchmark, 100%

Reading Average ACT Score, 28.3

Reading % Met Readiness Benchmark, 92.6%

Science Average ACT Score, 26.5

Science % Met Readiness Benchmark, 88.9%

% Met All Four Readiness Benchmarks, 81.5%

Rogers Heritage High School

Math Average ACT Score, 18.8 (-8.1)
Math % Met Readiness Benchmark, 23.7% (-70.7%)
English Average ACT Score, 18.4 (-11.4)
English % Met Readiness Benchmark, 53.6% (-46.4%)
Reading Average ACT Score, 19.3 (-9)
Reading % Met Readiness Benchmark, 35.4% (-57.2%)
Science Average ACT Score, 19.3 (-7.2)
Science % Met Readiness Benchmark, 24.2% (-64.7%)
% Met All Four Readiness Benchmarks, 12.7% (-68.8%)

Rogers High School

Math Average ACT Score, 19.4 (-7.5)
Math % Met Readiness Benchmark, 28.5% (-65.9%)
English Average ACT Score, 18.6 (-11.2)
English % Met Readiness Benchmark, 53.0% (-47%)
Reading Average ACT Score, 19.6 (-8.7)
Reading % Met Readiness Benchmark, 36.0% (-56.6%)
Science Average ACT Score, 19.9 (-6.6)
Science % Met Readiness Benchmark, 30.1% (-58.8%)
% Met All Four Readiness Benchmarks, 19.1% (-62.4%)

Rogers New Technology High School

Math Average ACT Score, 20.3 (-6.6)
Math % Met Readiness Benchmark, 34.2% (-60.2%)
English Average ACT Score, 20.4 (-9.4)
English % Met Readiness Benchmark, 71.9% (-28.1%)
Reading Average ACT Score, 21.3 (-7)
Reading % Met Readiness Benchmark, 50.0% (-42.6%)
Science Average ACT Score, 21.0 (-5.5)
Science % Met Readiness Benchmark, 39.5% (-49.4%)
% Met All Four Readiness Benchmarks, 25.4% (-56.1%)

II. A Unique Opportunity

Haas Hall Academy has a unique opportunity expand our nationally acclaimed academic program into the Historic Land Hotel in downtown Rogers. The Lane Hotel, built in 1928, is listed on the National Register of Historic Places and is being restored to function as a state-of-the-art educational facility.

The Lane Hotel will provide our scholars with rich, educational opportunities such as:

- 26 instructional spaces
- Two science labs (wet & dry)
- Music room with private practice rooms
- Videography and photography studios
- Art room with a kiln
- Two collaborative work areas
- Commercial kitchen
- Two dining rooms
- Spacious outdoor learning area and veranda

The Lane Hotel will contain a commercial kitchen allowing us to provide freshly prepared meals to our scholars. This kitchen will allow us to expand this program and provide food service to additional locations. An additional location in Rogers will allow us an opportunity to educate more scholars while maintaining our small, proactive familial environment.

III. Educational Program

Haas Hall Academy is an accelerated, college-preparatory STEAM (Science, Technology, Engineering, Arts, and Mathematics) school, and as such, we prepare our scholars for their intended college major while they are in high school. As a microcosm of a university, we infuse higher education pedagogical techniques into our courses. Our scholars complete courses by the semester, not by the calendar year, promoting a seamless transition between the secondary- and higher-educational environments.

At Haas Hall Academy, all scholars are exposed to an accelerated, college-preparatory education. Our courses provide the opportunity for greater depth and breadth of instructional material.

The courses our scholars take are determined by academic ability, not by grade level. English is the only exception. Scholars take two years of English in one calendar year. Scholars study one year (semester) of language and composition and one year (semester) of literature and composition. It is our intent and hope to bring to the Rogers community the opportunity to achieve the dramatic results our scholars have realized elsewhere in Northwest Arkansas. We believe all students deserve such an option.

FACILITIES UTILIZATION AGREEMENT

*To be completed and submitted with an amendment request
to add a new campus or relocate an existing campus*

Lessor(Owner): KLS Leasing, LLC

Lessee(Tenant): Haas Hall Academy

Any information regarding affiliation, family ties, or other relationships between the Lessor (Owner) and Lessee (Tenant) must be disclosed with the facilities lease agreement.

Describe the present use of the facility:
Abandoned. Fully restored.

Address of Premises: 121 W. Poplar
Rogers, AR 72756

Square Footage: 43,700

Terms of Lease: Six years

Rental Amount: \$25,833/mo

Contingency: The terms of this agreement are contingent upon
The Academy, Inc.

Charter School

receiving approval by the Authorizer to operate an open-enrollment public charter school at the premises identified.

Statutory Language Concerning No Indebtedness:

No indebtedness of any kind incurred or created by the open-enrollment public charter school shall constitute an indebtedness of the State of Arkansas or its political subdivisions, and no indebtedness of the open-enrollment public charter school shall involve or be secured by the faith, credit, or taxing power of the state or its political subdivisions. An open-enrollment public charter school shall not incur any debt, including any lease, without the prior review and approval of the Commissioner of Education.

We affirm that the facility is, or will be prior to charter occupancy, compliant with ADA/IDEA accessibility regulations, and will remain so while the charter occupies the location.

Lessee: Haas Hall Academy, Rogers

By:  Date 9.12.16
Signature

Lessor: KLS Leasing, LLC

By:  Date 9-12-16
Signature



HAAS HALL ACADEMY

STARR SCHOLAR CENTER

3880 NORTH FRONT STREET

FAYETTEVILLE, AR 72703.5130

(479) 966.4930 | (479) 966.4932 - FAX | HAASHALL.ORG

EVERY SCHOLAR, EVERY DAY - COLLEGE BOUND

Haas Hall Academy Rogers 2017.2018 Budget Proposal

2017.2018 Revenue Summary

Revenue	Amount	Total
Student Growth Funding	\$6,800 x (380)	\$2,584,000.00
Grants	\$0.00	\$0.00
Total Operational Funds		\$2,584,000.00

2017.2018 Expenditure Summary

Salaries and Benefits	Amount	Total
Salaries	\$1,306,250.00	
Benefits	\$326,562.50	
Total Salaries and Benefits		\$1,632,812.50

Operations	Amount	Total
Equipment & Vehicles	\$23,460.30	
Technology	\$42,000.00	
General Supplies	\$86,003.00	
Textbooks	\$82,968.20	
Classroom Equipment	\$110,620.00	
Dues and Fees	\$18,700.00	
Bookkeeping	\$26,500.00	
Legal	\$25,500.00	
Purchased Services	\$34,500.00	
Office Equipment	\$27,500.00	
Liability Insurance	\$19,000.00	
Disposal Sanitation	\$8,825.00	
Water/Sewer	\$11,970.00	
Electricity/Gas	\$88,625.00	
Lease	\$310,000.00	
Total Operating Expenditures		\$916,171.50
Total Expenditures		\$2,548,984.00
Revenues minus Expenditures		(\$35,016.00)



HAAS HALL ACADEMY

STARR SCHOLAR CENTER

3880 NORTH FRONT STREET

FAYETTEVILLE, AR 72703.5130

(479) 966.4930 | (479) 966.4932 - FAX | HAASHALL.ORG

EVERY SCHOLAR, EVERY DAY - COLLEGE BOUND

Haas Hall Academy LEA 2017.2018 Budget Summary

2017.2018 Revenue Summary

Revenue	Amount	Total
State Foundation Aid	\$6,800 x (350)	\$2,380,000.00
Student Growth Funding	\$6,800 x (857)	\$5,827,600.00
Facilities Funding	\$553.69 x (350)	\$193,791.50
Grants	\$0.00	\$0.00
Total Operational Funds		\$8,401,391.50

2017.2018 Expenditure Summary

Salaries and Benefits	Amount	Total
Salaries	\$4,138,877.60	
Benefits	\$1,034,718.50	
Total Salaries and Benefits		\$5,173,596.10

Operations	Amount	Total
Equipment & Vehicles	\$110,380.90	
Technology	\$452,754.54	
General Supplies	\$258,009.00	
Textbooks	\$248,904.60	
Classroom Equipment	\$451,860.00	
Dues and Fees	\$56,100.00	
Bookkeeping	\$79,500.00	
Legal	\$76,500.00	
Purchased Services	\$103,500.00	
Office Equipment	\$82,500.00	
Water/Sewer	\$21,170.00	
Disposal/Sanitation	\$17,550.50	
Liability Insurance	\$57,000.00	
Electricity/Gas	\$153,815.00	
Lease	\$951,814.48	
Total Operating Expenditures		\$3,121,359.02
Total Expenditures		\$8,294,955.12
Revenues minus Expenditures		(+\$106,436.38)



HAAS HALL ACADEMY

STARR SCHOLAR CENTER

3880 NORTH FRONT STREET

FAYETTEVILLE, AR 72703.5130

(479) 966.4930 | (479) 966.4932 - FAX | HAASHALL.ORG

EVERY SCHOLAR, EVERY DAY - COLLEGE BOUND

Scholar Demographics 2016.2017 Enrollment Race/Grade

Fayetteville Campus

Enrollment Count	07	08	09	10	11	12	Race Totals
Asian	5	12	6	4	6	3	36
Black			1	2	1		4
Hawaiian/Pacific Islander			2				2
Hispanic	1	2	5	3	5	8	24
Native American		1	1		2		4
Two or More	4	3	8	2	1		18
White	25	52	40	48	51	46	265
Grade Totals	38	70	63	59	66	57	353

Bentonville Campus

Enrollment Count	07	08	09	10	11	12	Race Totals
Asian	10	7	11	9	3	3	43
Black	1	2	2			1	6
Hawaiian/Pacific Islander							
Hispanic	5	8	5	4	2	4	28
Native American		1	1	2	2		6
Two or More	6	1	2	3	1	1	14
White	29	50	38	55	33	16	221
Grade Totals	51	69	59	73	41	25	318

Percentage Free and Reduced Lunch

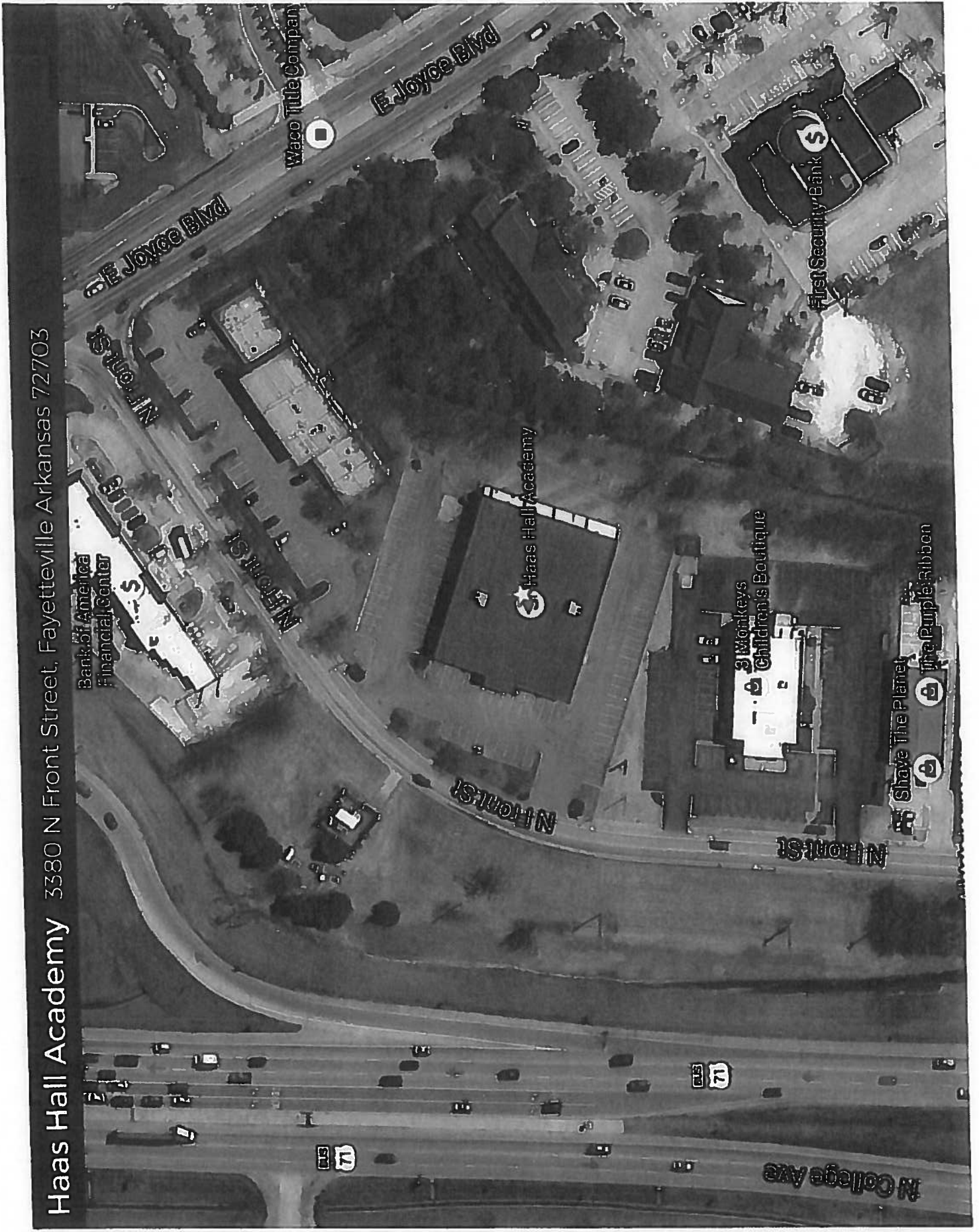
Fayetteville Campus

Grade Level	07	08	09	10	11	12	Total
FRL	N/A	N/A	N/A	N/A	N/A	N/A	N/A

Bentonville Campus

Grade Level	07	08	09	10	11	12	Total
FRL	N/A	N/A	N/A	N/A	N/A	N/A	N/A

Haas Hall Academy 3380 N Front Street, Fayetteville Arkansas 72703



Bank of America
Financial Center

E Joyce Blvd

Waco Title Company

E Joyce Blvd

N Front St

Haas Hall Academy

3 Monkeys
Children's Boutique

First Security Bank

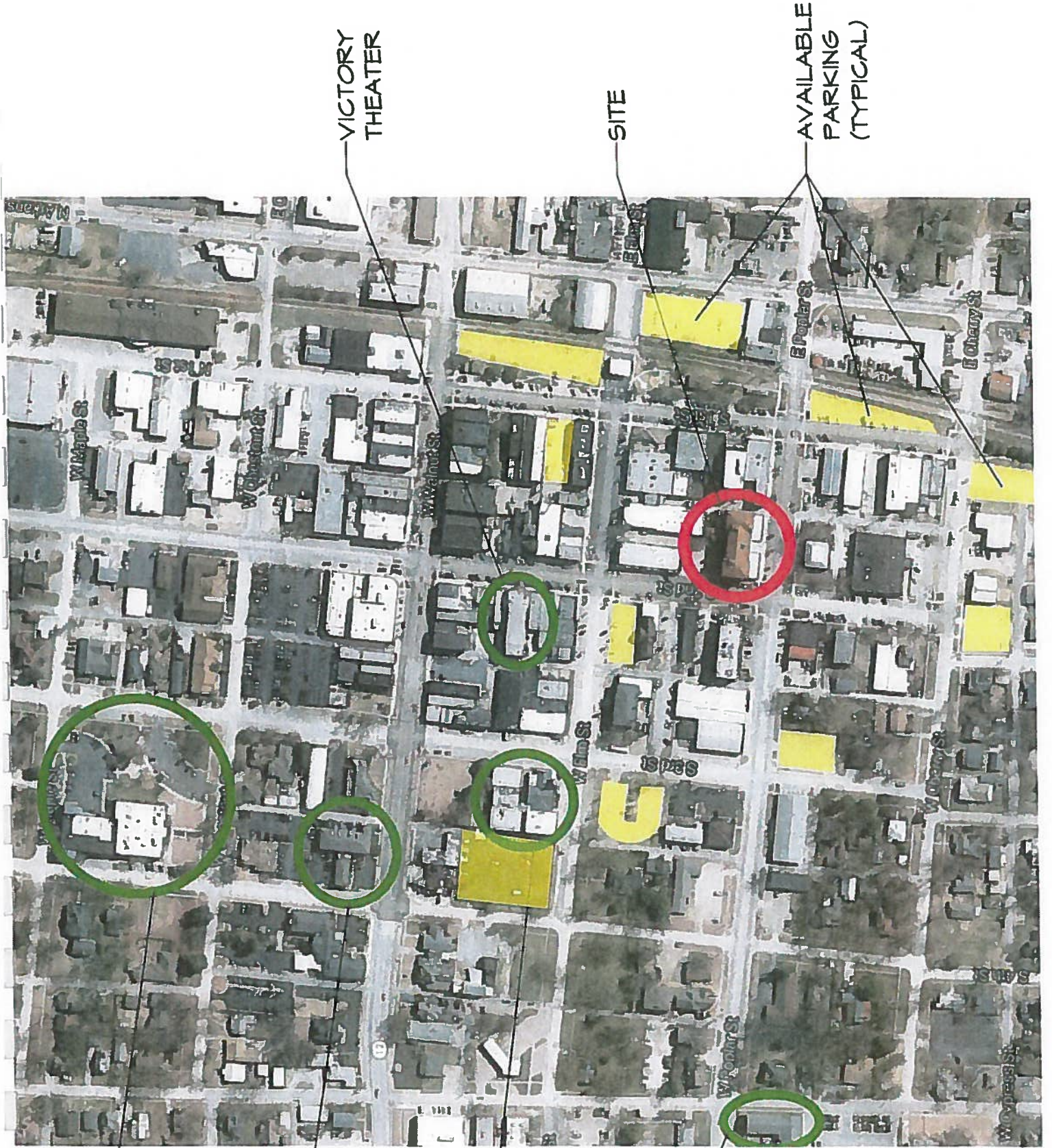
Shave The Planet

The Purple Ribbon

N College Ave

US 71

US 1



CITY HALL

CHAMBER
OF
COMMERCE

FIRST
METHODIST
CHURCH

BENTON
COUNTY
SCHOOL
OF THE
ARTS

VICTORY
THEATER

SITE

AVAILABLE
PARKING
(TYPICAL)



HAAS HALL ACADEMY

STARR SCHOLAR CENTER

3880 NORTH FRONT STREET

FAYETTEVILLE, AR 72703.5130

(479) 966.4930 | (479) 966.4932 – FAX | HAASHALL.ORG

EVERY SCHOLAR, EVERY DAY – COLLEGE BOUND

DESEGREGATION ANALYSIS

Haas Hall Academy is requesting a license to open an open-enrollment public charter school in Rogers within the boundaries of the Rogers School District. As an open-enrollment public charter school unconfined by district boundaries, Haas Hall Academy expects to obtain the majority of its students from within the boundaries of the Rogers, Springdale, Eureka Springs, Bentonville, and Pea Ridge School Districts. Besides those School Districts, the Rogers School District is also contiguous to the Huntsville School District. Haas Hall Academy may also receive some students from the Huntsville School District as well.

In carefully reviewing the potential impact that Haas Hall Academy would have upon the efforts of the surrounding school districts to comply with court orders and statutory obligations to create and maintain a unitary system of desegregated public schools pursuant to Ark. Code Ann. § 6-23-106, the applicant finds that neither the Rogers School District nor any of its contiguous or neighboring school districts are currently subject to, or have ever been subject to, any court orders or judicial decrees concerning the desegregation of its schools. As an open-enrollment public charter school, Haas Hall Academy must be race-neutral and non-discriminatory in its student selection and admission processes, and the granting of this amendment request to open an open-enrollment public charter school in Rogers will not serve to hamper, delay, or in any manner negatively affect the desegregation efforts of any public school district or districts within the state.



HAAS HALL ACADEMY

STARR SCHOLAR CENTER

3880 NORTH FRONT STREET

FAYETTEVILLE, AR 72703.5130

(479) 966.4930 | (479) 966.4932 – FAX | HAASHALL.ORG

EVERY SCHOLAR, EVERY DAY – COLLEGE BOUND

SIBLING POLICY

Haas Hall Academy has submitted its request to invoke the sibling preference as authorized by Arkansas law. The goal of this policy is to ensure family uniformity and consistency and not to divide children who have a preference to attend the same institution. Siblings are defined as children who share at least one common biological or legal parent whether through natural or adoptive means. This definition includes:

- a) Biological Siblings that share parents;
- b) "Half" siblings that share a single parent;
- c) "Step" siblings that share a parent or parents through marriage; and
- d) Children who share a parent or parents through adoption or guardianship.

Haas Hall Academy will offer preferential placement of scholars whose family siblings are currently enrolled at Haas Hall Academy. Applicants must apply and provide proof of a clear sibling relationship with a currently enrolled scholar.

Siblings will only receive preferential placement at the campus at which their sibling is enrolled if there is an available seat in the grade level they wish to be enrolled.

**HAAS HALL ACADEMY
APPROVED WAIVERS**

District LEA:	72-40-700	Elementary School LEA:	N/A
City:	Fayetteville	Middle School LEA:	N/A
Opening Date:	Fall 2004	High School LEA:	72-40-703
Grades Approved:	7-12	Expiration Date:	06/30/2022
CAP:	1,000	Grades Served 2016-2017:	7-12

Waivers from Title 6 of the Arkansas Code Annotated (Education Code)

6-10-106	School year dates
6-13-608	Length of directors' terms
6-13-611	Vacancies generally
6-13-616	Director eligibility
6-13-619	Monthly meetings
6-13-630 et seq.	Election by zone and at large
6-14-101	Applicability of general election laws
6-15-1004	Qualified teachers in every public school classroom
6-15-1005(b)(5)	Pertaining to alternative learning environments
6-17-203	Committees on personnel policies—Members
6-17-302	Principals—Responsibilities
6-17-309	Certification to teach grade or subject matter—Exceptions—Waivers
6-17-401	Teacher licensure requirement
6-17-418	Teacher licensure—Arkansas history requirement
6-17-902	Definition (definition of a teacher as licensed)
6-17-908	Teachers' salary fund—Authorized disbursements
6-17-1501 et seq.	Teacher Fair Dismissal Act
6-17-1701 et seq.	Public School Employee Fair Hearing Act
6-18-223	College credits (rules and regulations of any institution of higher education and/or the Arkansas Higher Education Coordinating Board are not waived)
6-18-503	Written student discipline policies required
6-18-503(a)(1)(C)(i)	Pertaining to alternative learning environments
6-18-505	School discipline act (corporal punishment)
6-20-2208(c)(6)	Monitoring of expenditures (gifted and talented)
6-42-101 et seq.	General Provisions (gifted and talented)
6-48-101 et seq.	Alternative Learning Environments

Waivers from ADE Rules Governing Standards for Accreditation of Arkansas Public Schools and Districts

9.03.3.11	5-8 Arkansas history (to be incorporated into other courses)
9.03.3.12	Pertaining to high school courses being taught in Grades 5-8
9.03.4.7	High School Social Studies (Arkansas history to be incorporated into other social studies curriculum)
9.03.4.11	AP Courses
15.03	Licensure and Renewal
16.02	Media Services
16.03	Health and Safety Services
18	Gifted and Talented Education
19.03	Pertaining to alternative learning environments
21	Auxiliary Services

Waivers from Other Rules:

ADE Rules Governing Education Licensure

ADE Rules Governing Waivers for Substitute Teachers

ADE Rules Governing Parental Notification of an Assignment of a Non-Licensed Teacher to Teach a Class for More than Thirty (30) Consecutive Days and for Granting Waivers

Section 4 of the ADE Rules Governing the Distribution of Student Special Needs Funding and the Determination of Allowable Expenditures of those Funds (Pertaining to alternative learning environments)

ADE Rules for Gifted and Talented Program Approval Standards

ADE Rules Governing School District Requirements for Personnel Policies, Salary Schedules, Minimum Salaries, and Documents Posted to District Websites (certified staff salary schedule)

African American History

Certain provisions of state law shall not be waived. The public charter school is subject to any prohibition, restriction, or requirement imposed by Title 6 of the Arkansas Code Annotated and any rule and regulation approved by the State Board of Education under this title relating to:

- Monitoring compliance with Arkansas Code Annotated § 6-23-101 et seq. as determined by the Commissioner of the Department of Education;
- Conducting criminal background checks for employees;
- High school graduation requirements as established by the State Board of Education;
- Special education programs as provided by this title;
- Public school accountability under this title;
- Ethical guidelines and prohibitions as established by Arkansas Code Annotated § 6-24-101 et seq., and any other controlling state or federal law regarding ethics or conflicts of interest; and
- Health and safety codes as established by the State Board of Education and local governmental entities.

Also, any teacher, whether licensed or unlicensed, who teaches a core academic subject area must meet the requirements of the ADE Rules Governing Arkansas Qualified Teacher Requirements. Core academic subjects include English Language Arts, Mathematics, Science, Social Studies, Early Childhood (Elementary), Music, Art and Foreign Language.