

Equipment:

- **Extron Wall Vault**



Inside of the Wall Vault. This holds the electrical, network and other cabling components for the system.



Closer look at the inside of the Wall Vault. The Wall Vault is the control station or the 'brains' of the Extron System.



Completed Wall Vault with case. This will hang above the Promethean panel on the wall.

- **Over-the-board mount**

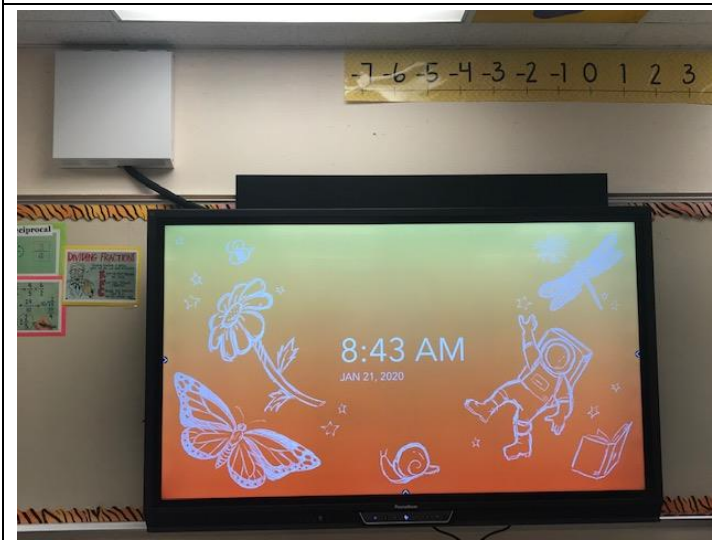


The wall mounts are manually adjustable allowing for height adjustments based on grade levels.

- Promethean Panel



This panel has been lowered for Pre-K – 1st grade heights. ProComputing is having larger bracket covers made so that the struts will be covered. Once those are complete, they will come back and put up the new bracket covers.



This panel is mounted for the 4th and 5th grade height.

- **Wall Plates and MLC Plate**



USB for Touch – Allows for touch from the panel to control the teacher desktop

2 HDMI connections – Input 1, and Input 2. These connectors will light up green when in use.



The MLC plate contains the teacher controls.

- **Speakers and P/A Sound Sensor**



Each classroom will be getting 2 new speakers as part of Extron system. These are mounted left and right in the room.



A sound sensor will be mounted over the current P/A speaker. When sound is detected from the P/A speaker, the Extron speakers will automatically mute or 'duck' the sound. This is a security feature to ensure that no important announcements are missed.

Hawk Installation:

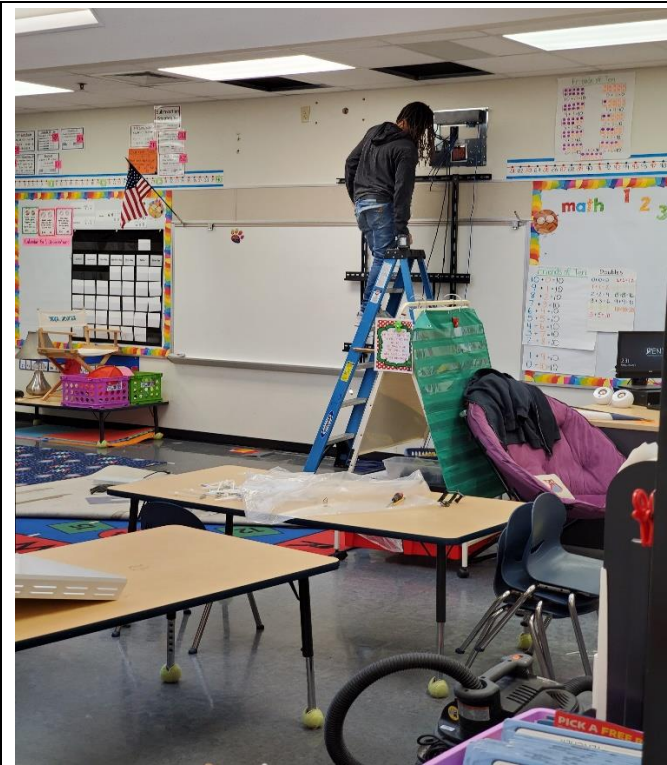
- Day 1 Staging at Hawk Elementary



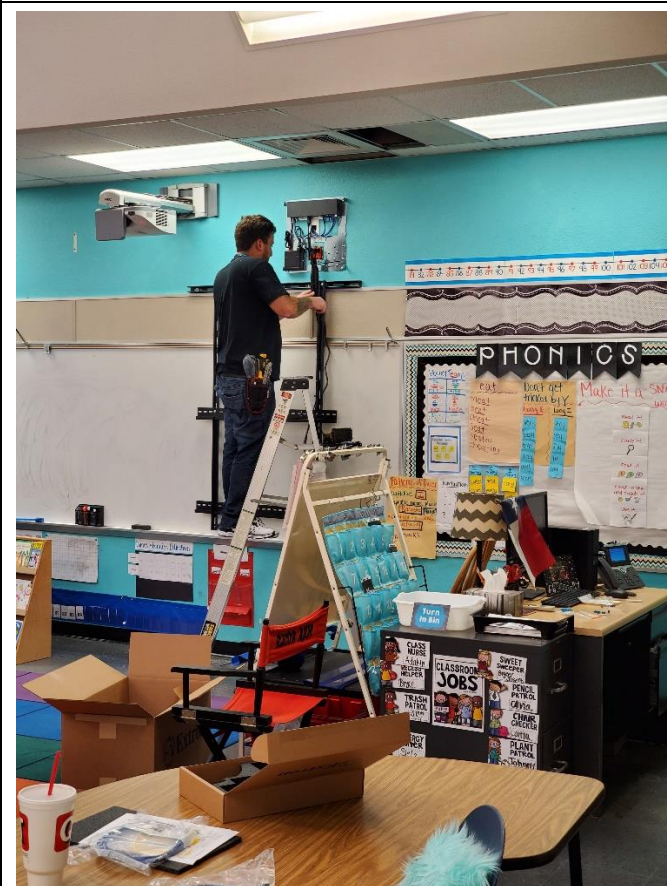
ProComputing began delivering equipment to Hawk on January 3rd.



- **Installing the Extron Wall Vault**



New electrical outlets are run before the Extron Wall Vault is installed as part of the installation.



Network cabling, HDMI connectors and USB connectors are pulled as part of the installation.

- Teams working together to learn more about their Promethean panels



Teachers collaborating



Grade level teams collaborating

Roll-out phases: See attached spreadsheet for roll-out schedule:

These are projected installation dates subject to change. Hawk and McMath are complete minus some network configurations. Borman's installation will begin February 4th.

Training for Staff:

Prior to deployment, a Promethean demo panel is being moved to each campus. Once the demo unit is on campus, the Digital Learning Team schedules in person training with each campus. The trainings are coordinated with the Campus Principal and either occur after school or during the teacher's conference period. In addition, there are also online trainings available for the teachers. The demo panel allows the teachers time to work with and learn more about the panel before their classroom installation occurs. The demo unit is usually on campus about 2 weeks prior to deployment.

Pre-deployment Teacher documents:

Prior to deployment an email is sent to the staff detailing the installation date and projected order of installs, a detailed list and explanation of the components that will be installed, cleaning of the panel as well as the panel account name. Below is one of the excerpt's in the email that goes to the staff.

An orange rounded rectangular button with the text "Cyber Safety" in white, bold, sans-serif font. The button has a slight shadow on its left side.

Each Promethean panel will have its own designated Google account. We are recommending that the teachers use these accounts on the panel rather than their personal school account to prevent personal accounts from being compromised. Even if you turn the panel off, the account stays logged in. You can share documents from your personal account to the panel account for any resources you want to use from the panel for your classroom. The panel account will follow the naming scheme of campuscode-room#-panel@g.dentonisd.org. ex. 111-304-panel@g.dentonisd.org. Your Campus Support Tech will log the panel accounts in for you following the deployment.

Additional documents provided to teachers:

- Quick Reference Guide. See attached [Promethean Panel Basics document](#).
- MLC Plate Quick Reference Guide is distributed to each staff member who receives a panel. See attached [A/V /Controls Quick Reference](#)

Hawk Teacher Surveys:

Technology sent a survey to the staff at Hawk who received the panels. The first question was: How has the Promethean panel enhanced learning in your classroom? What can you do now that you couldn't do before? Below are a few of the comments that all staff reiterated.

"It has enhanced learning in EVERY possible way!! It is an amazing tool for student engagement. It's wonderful color choices, the unique screens, the size, the user-friendliness, the easy student access. I could go on and on! It has made math instruction richer and engaging. :)"

"more student interaction at the board, less paper waste, notating on all sorts of files by students and teacher, interactive pdf games"

"Yes, I love that is it touch screen and I can toggle back and forth between applications and videos easily. It is so useful that is functions as a whiteboard as well and that anchor charts and notes can be captured and used for future use/review."

"I love being able to have multiple kids come up to use the board at the same time. I also like when I am showing a document or book on the screen that I can circle or highlight certain areas based on what I am teaching."

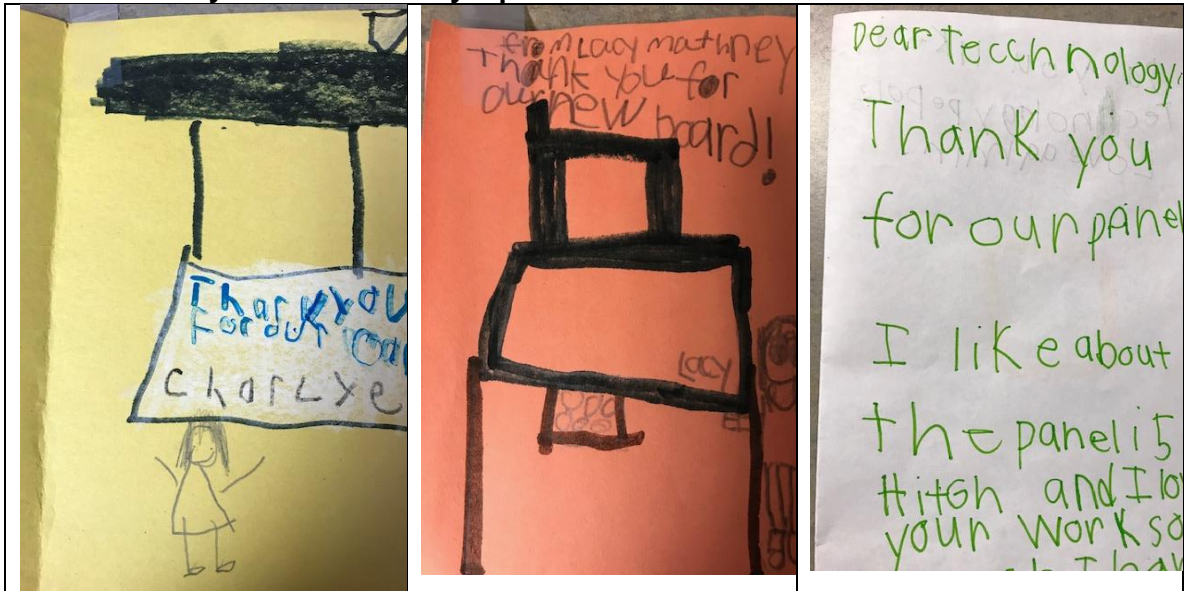
"I can quickly switch between whiteboard, computer, and document camera. My favorite feature is to capture an image from the computer or document camera and send it to whiteboard. On the whiteboard picture, we can make notes and drawings to enhance our learning."

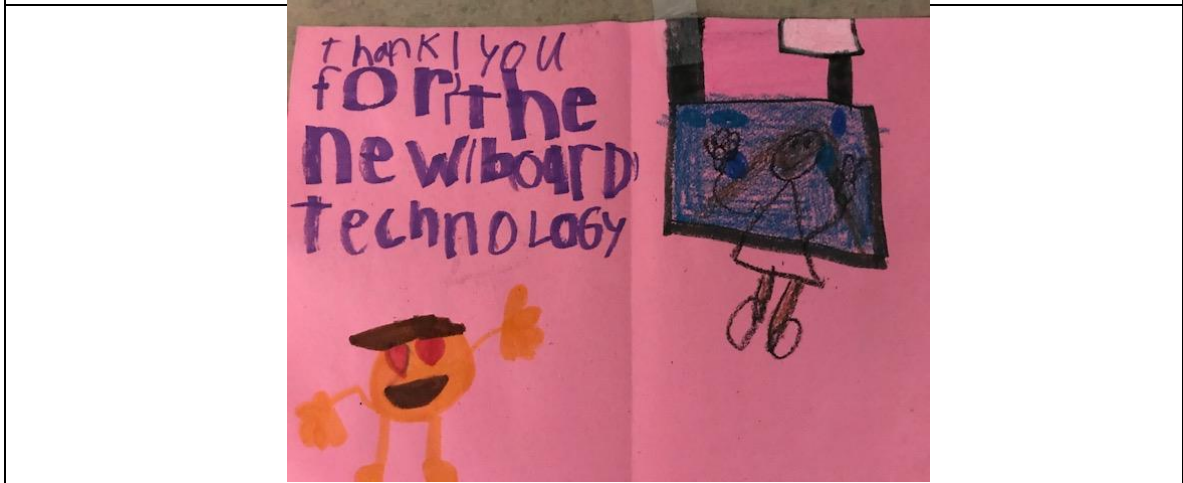
"It is great to have the option to annotate on the text right there. It is also nice to have the options for students to do the same. We could do that with our document cameras and screens, so that isn't a new concept, it is just that it is more clear and easier to manipulate."

"I can differentiate for each group of students more quickly. Students can code on board more efficiently and stay color coded. My transitions are more seamless with anchor charts at my fingertips! LOVE IT FOR DYSLEXIC STUDENTS! Please get them for ALL therapists!"

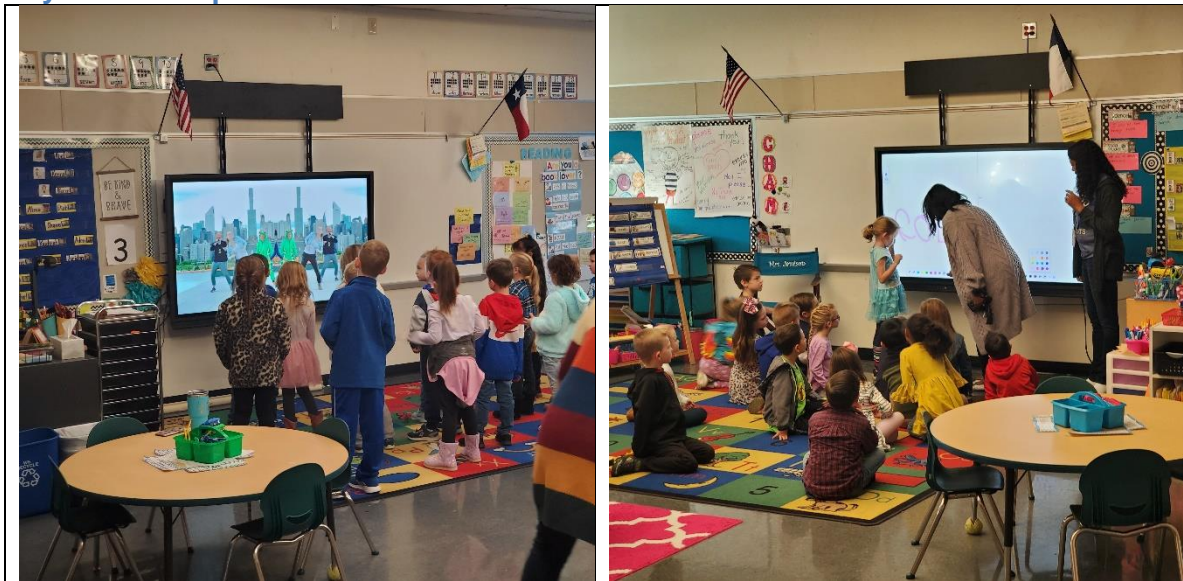
"Projected information is much clearer and easier to read due to the size and quality of the projection. Students are able to write on documents that are projected. One grade used a PowerPoint with clipart pictures and dragged them into place to make a water cycle and then labeled the pieces and drew in arrows to show the direction of the cycle."

Student thank you notes and day 1 pics from Hawk:





Day one Hawk photos:





On this bottom picture, this is the same image from the document camera from the old projector and then on the new Promethean panel.