



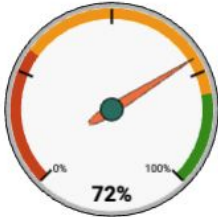
UNITY SCHOOL DISTRICT

Finance Report - November 2025
December 8, 2025 Board Meeting

Unity School District Budget Dashboard - 2025/2026 - Month Ending November 30, 2025

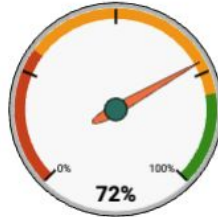
% of the School Year Complete 42%

TOTAL DISTRICT



BUDGET	\$25,074,122	
SPENDING	\$ 7,139,345	28%
AVAILABLE	\$17,934,777	72%

FUND 10 Total (General)



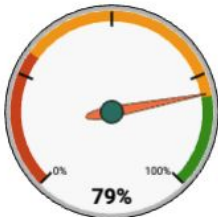
BUDGET	\$17,008,275	
SPENDING	\$ 4,692,086	28%
AVAILABLE	\$12,316,189	72%

FUND 27 Total (Special Education)



BUDGET	\$3,385,247	
SPENDING	\$1,009,248	30%
AVAILABLE	\$2,375,999	70%

FUND 29 Total (Native American)



BUDGET	\$ 21,000	
SPENDING	\$ 4,335	21%
AVAILABLE	\$ 16,665	79%

FUND 38 & 39 Total (Debt)



BUDGET	\$ 2,032,940	
SPENDING	\$ 622,682	31%
AVAILABLE	\$ 1,410,258	69%

FUND 50 Total (Food Service)



BUDGET	\$ 827,327	
SPENDING	\$ 281,891	34%
AVAILABLE	\$ 545,436	66%

FUND 80 TO 86 Total (Community Ed)



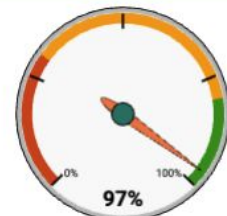
BUDGET	\$ 1,353,967	
SPENDING	\$ 466,381	34%
AVAILABLE	\$ 887,586	66%

FUND 21 Total (Student Activities)



BUDGET	\$ 149,811	
SPENDING	\$ 52,697	35%
AVAILABLE	\$ 97,114	65%

FUND 73 Total (EE Trust)



BUDGET	\$ 295,555	
SPENDING	\$ 10,027	3%
AVAILABLE	\$ 285,528	97%

November Notables:

- Rolled out a streamlined Invoice Processing System
- Attended Special Ed Funding conference with Elizabeth Jorgensen
- Attended the Baird Model Workshop to begin 2026/27 Budget Planning
- Finalized the Apple Lease to move to iPads for HS students
- Secured our Line of Credit to support cash flow shortfalls



UNITY SCHOOL DISTRICT

November 30, 2025
UNITY SCHOOL DISTRICT
ALL FUNDS
PROOF OF CASH

BANK ACCOUNT	BALANCE October 31, 2025	DEPOSITS/ RECEIPTS	WITHDRAWALS/ DISBURSEMENTS	BALANCE November 30, 2025
Pillar Bank - 4034 General Checking	\$ 0.00	\$ 552,556.77	\$ 552,556.77	\$ 0.00
Pillar Bank - 3781 Sweep	\$ 1,481,705.91	\$ 450,339.85	\$ 1,148,686.48	\$ 783,359.28
Pillar Bank - 9458 Debt Service	\$ 1,461.78	\$ 4.76	\$ -	\$ 1,466.54
LGIP - #1 - Debt Service	\$ 55,518.81	\$ 183.63	\$ -	\$ 55,702.44
LGIP - #2 - General	\$ 2,111.12	\$ 6.98	\$ -	\$ 2,118.10
Midwest Institutional Trust - OPEB Fund 73	\$ 448,101.24	\$ 1,789.18	\$ 54.71	\$ 449,835.71
Old National Bank - Cap Imprvmt Money Market Premi	\$ 10,013.41	\$ 33.54	\$ 13.41	\$ 10,033.54
Old National Bank - Capital Improvement Sweep	\$ 482,645.58	\$ 1,634.53	\$ -	\$ 484,280.11
Pillar Bank - 3863 ES Activity	\$ 13,721.70	\$ 50.54	\$ 400.00	\$ 13,372.24
Pillar Bank - 8579 MS Activity	\$ 39,683.24	\$ 3,006.07	\$ 6,226.78	\$ 36,462.53
Pillar Bank - 3894 HS Activity	\$ 101,552.32	\$ 20,387.36	\$ 9,599.95	\$ 112,339.73
Pillar Bank - 7068 Scholarship Milltown CC	\$ 40,953.14	\$ -	\$ -	\$ 40,953.14
Pillar Bank- 1817 Scholarship Lumsden	\$ 38,171.95	\$ -	\$ -	\$ 38,171.95
Pillar Bank - 2643 Scholarship Amery Farmers	\$ 17,800.23	\$ -	\$ -	\$ 17,800.23
Pillar Bank - 7799 Scholarship Checking	\$ 119,004.95	\$ 387.37	\$ -	\$ 119,392.32
Pillar Bank - 1217 Scholarship G Melby Am Legion	\$ 17,321.85	\$ -	\$ -	\$ 17,321.85
	\$ 2,869,767.23	\$ 1,030,380.58	\$ 1,717,538.10	\$ 2,182,609.71

Proof of Cash - Rolling 13 Months - November 2025

