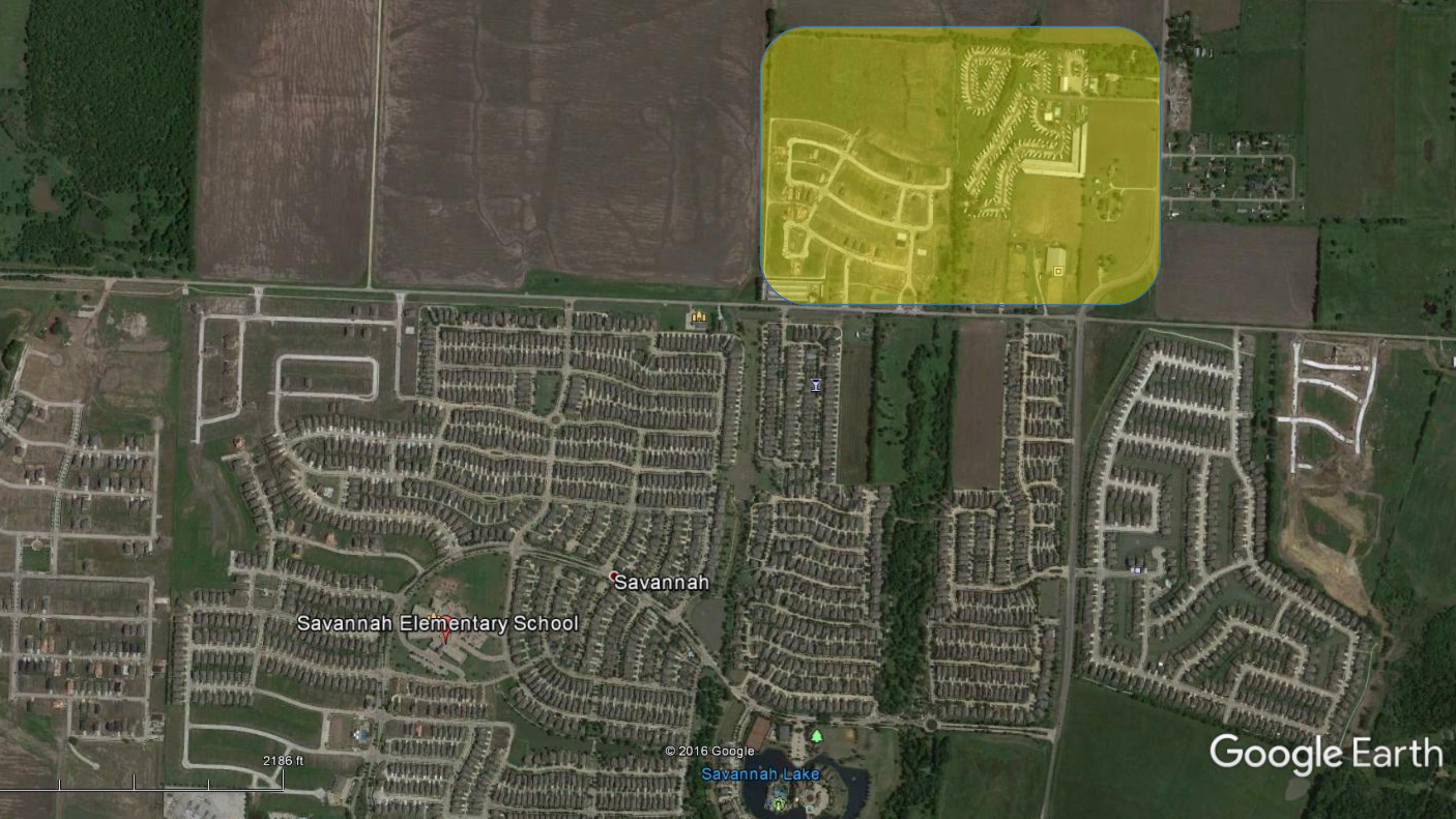


Discussion of Attendance Boundary Modifications

Presented by Academic Programs

September 13, 2016



Savannah

Savannah Elementary School

© 2016 Google

Savannah Lake

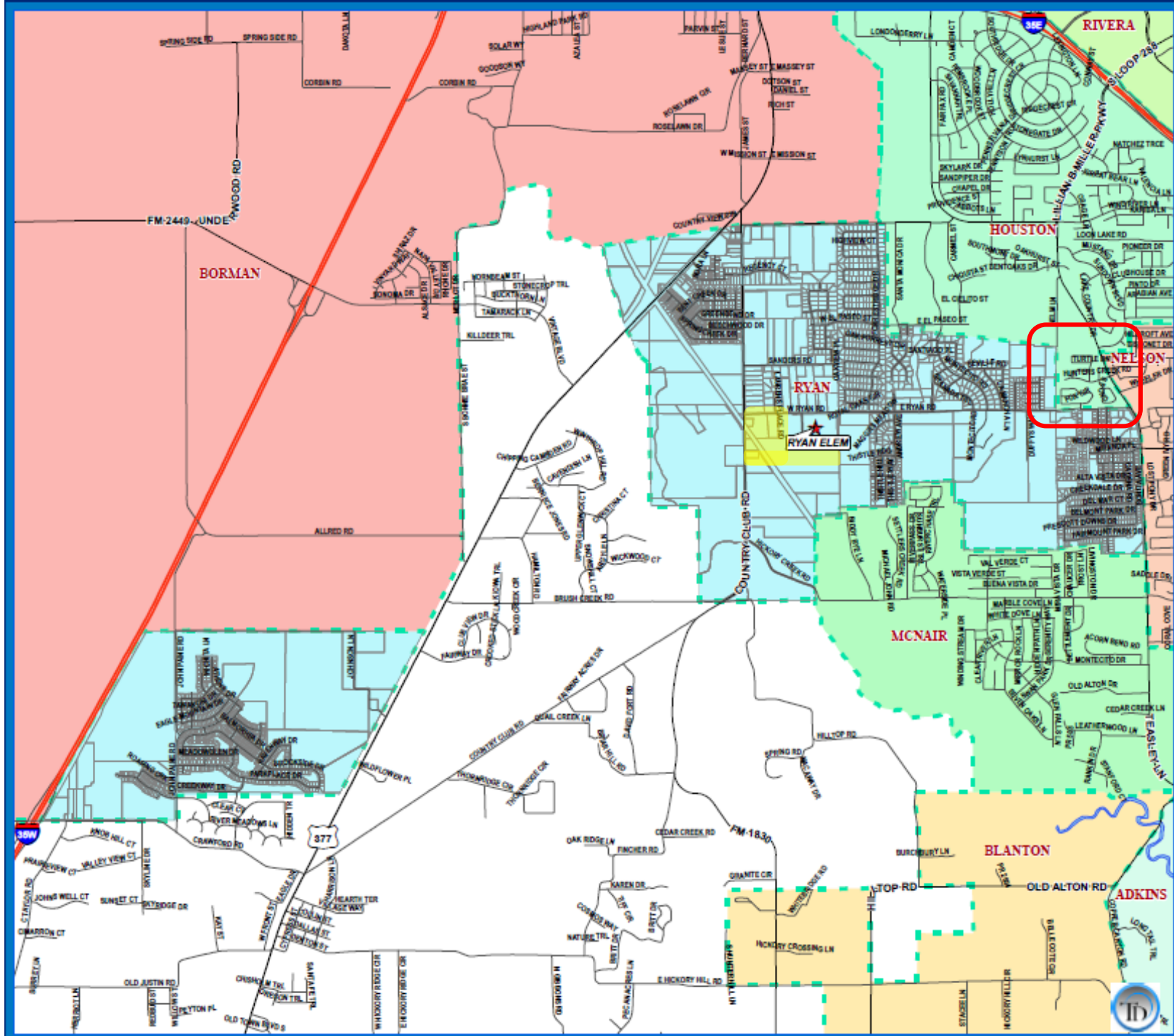
2186 ft

Google Earth

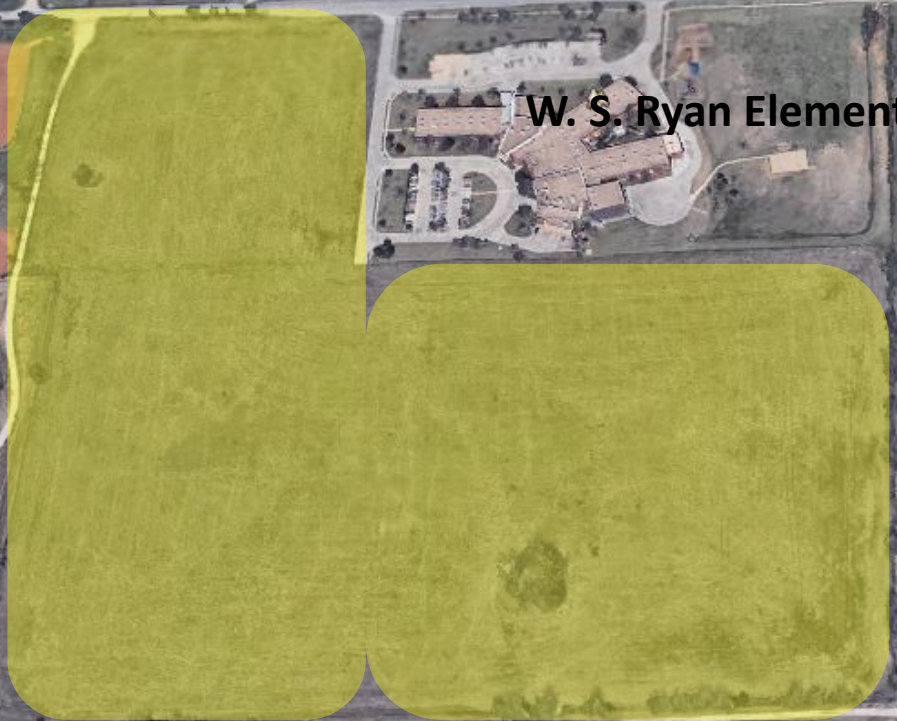
W.S. RYAN ELEMENTARY

Proposed Modification

- Current developments in process near and adjacent to campus
- Current enrollment is 626 students
- Boundary modifications would allow for the growth anticipated with new developments



W. S. Ryan Elementary



778 ft

© 2016 Google

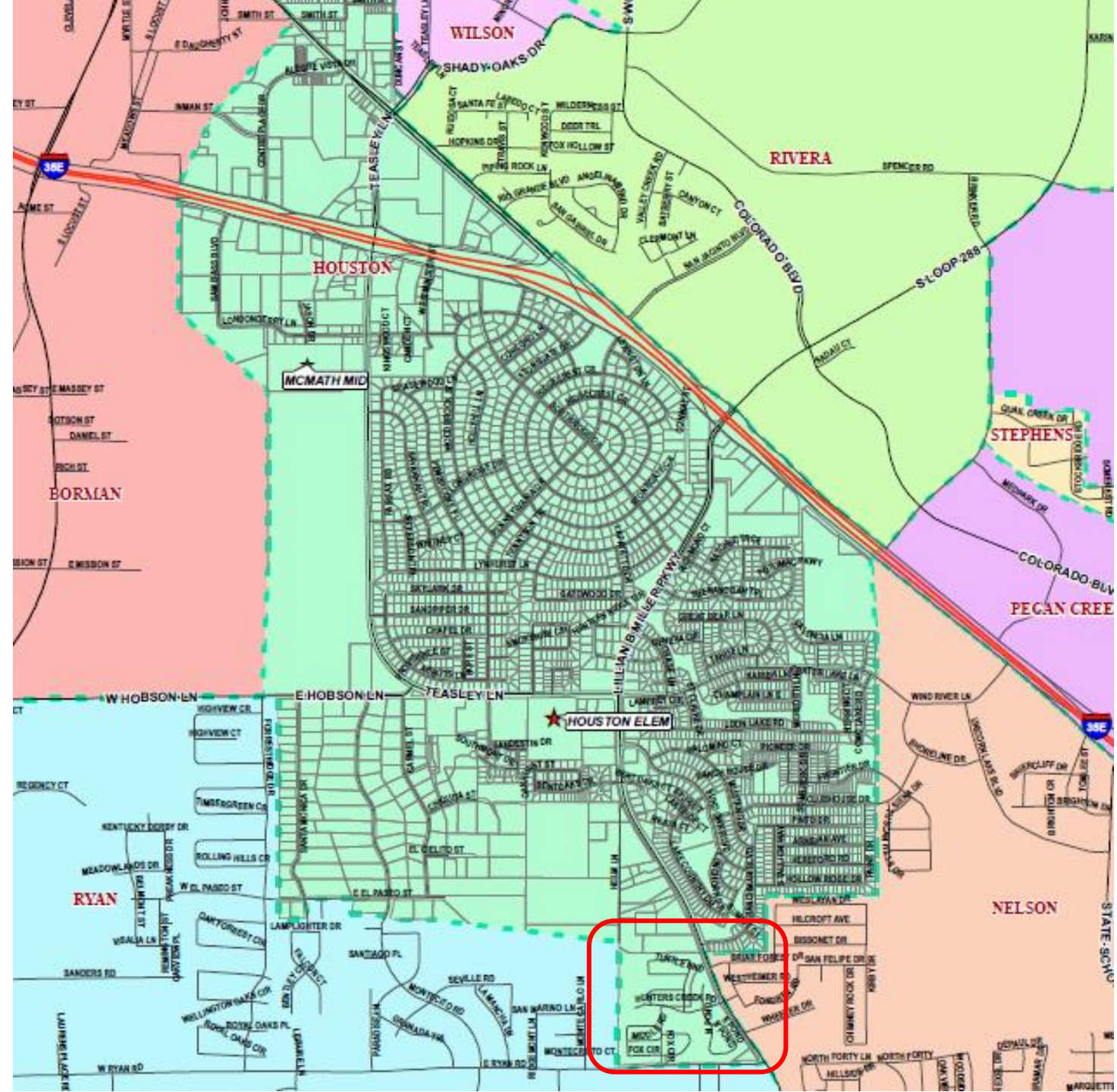
Google Earth

HOUSTON ELEMENTARY

Proposed Modification

- Teasley Trails Phase I & II
- Current enrollment is 591 students

Houston - 2015/16 Enrollment Analysis with Teasley Trails			
Residing Students	Students who Transfer out	Students who transfer in	Current Attending Students
623	130	82	575
Percentage	21%	14%	92.3%
Yield Analysis	SF Parcels	MF Units	Total Units
Housing	2,455	3,556	6,011
Students	461	162	Total Yield
Yield	0.19	0.046	0.10
Future Housing	Projected SF	Projected MF	
	469	150	
Development Yield	0.25	0.05	
Future Enrollment	117	8	
Enrollment at Maturity			
Reside	Single Family	Multi-Family	Total
Based on Current Yields	578	170	748
Moderate Change in Yield	633	185	818
High Change in Yield	657	203	860
Attending Enrollment at Maturity: Assumes no program changes. Uses the current share of attending enrollment to residing enrollment.		Current Yields	690
		Moderate Yield Change	755
		High Yield Change	794



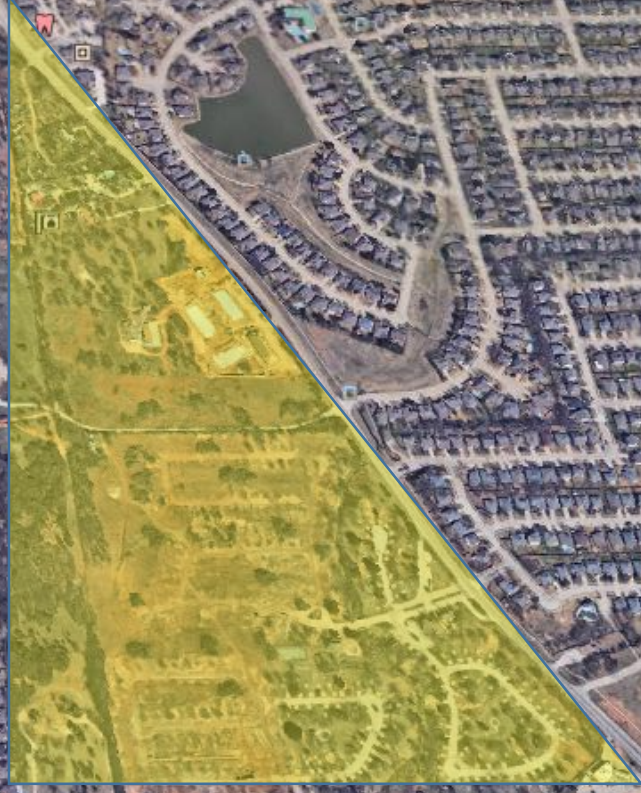
Sam Houston Elementary School

W. S. Ryan Elementary

1789 ft

© 2016 Google

Google Earth



Questions

