

### Route Changes 2026 Fall

Stall 1: Mink Creek route remains the same, going from the bottom of Hwy 36 to mile post 13.

Stall 2: This route includes Treasureton Rd. and a portion of Hwy 34 with a few stops on 800 East on 100 South and East Oneida in Preston. This route also picks up and drops off a stop on 300 East 100 South.

Stall 3: Riverdale route will begin at the end of East Riverdale Road turning around at the intersection of East Riverdale Rd. and Station Cr Rd. The route will then proceed down Riverdale Road to include all the students on the West side of the highway near the resort. The route will then go up behind Glendale reservoir near the landfill to pick up those students. After which it will proceed to the schools to drop off.

Stall 4: This route will turn around on Glendale Rd near Worm Cr. Rd. It will then proceed down and across Whitney and loop around 2600 East and 1800 East picking students up on 1600 East then to the highway at Whitney. Pick up students at 1200 East. Will then drop at the high school then go back to the walkway.

Stall 5: This route starts with turnaround spots in Banida at Reyes Dairy, 6998 North 1200 West, Winder and Hot Springs Rd. This route now picks up the Sunrise and Sunset town stop. It will then deliver students to high school. This route ends at the walkway.

Stall 6: This route will continue as last year with one turn around at the end of 1400 W. This route picks up a loop on 800 West to 1400 North and back around towards Burger King on State Street. It will also have a town stop at 244 West 1<sup>st</sup> North. We will continue to monitor the townhouse situation as needed.

Stall 7: Picks up South State and makes a loop around 5600 South to 4800 South. Dropping off high school students then to a town stop located at 200 West 50 South. Then, go to the walkway.

Stall 8: This route starts at 3200 South and Parkinson Road. Proceeds to 3600 South then to 4000 South looping around 1600 West back to 3200 South. to 800 W to 2000 S. then 600 West to 800 South turning at 200 West to 200 South. Dropping off high school students and then going to the walkway.

Stall 9: This route starts at 3200 South proceeds to 800 West to 4800 South then to 1400 West to 4000 South around the loop on 1600 West. Back up to 3200 South to 800 West then North towards 2000 South then North on 600 West towards Preston. Dropping off high school kids and then going to the walkway.

Stall 10: This route starts at The Sugar factory then to 800 East, continuing to 2400 South then to Parkinson Road to Franklin then to HWY 91 turning back West on 4800 South to 800 East, then South to the border turning around and then back north on 800 East to Preston. Drop off high school students with town stops on 400 West. Then proceed to the walkway.

Stall 11: This route will be picked up as last year with the addition of students in Franklin living on 1st South and 2<sup>nd</sup> South. Route will turn at 2<sup>nd</sup> East and drive to 2<sup>nd</sup> South and then loop around and pick up kids all the way to First East. Has one turn around on Cove Rd at the border. Route will pick up the remainder of the kids in Franklin on 3<sup>rd</sup> East going North out of town. Will go up 2400 East and down

1600 South to pick up two additional stops. Dropping off high school students and then proceeding to unload at the walkway.

Stall 12: Maple Creek route will pick up students all the way up Maple Creek Road. After going around the egg farm, it will pick up students at 2800 East before proceeding to town. Will drop off at high school and unload at walkway

Stall 13: Cub River route will turn around at Deer Cliff then pick up all students on Cub River Road towards town. There are no off shoots on this route; all stops are on Cub River Road. Dropping off students at the high school and then proceeding to the walkway.

Stall 14: This route begins picking up the golf course and the North side of Preston on 800 N and to 800 West. Dropping off students at the high school then proceeding to the town stops. This route has two town stops at 100 North near the hospital. Dropping students off at the walkway.

Stall 15: This route starts Then to 1200 East above the water treatment plant then to 2400 East continues to Ford's Bend then down 2200 East to Oneida to 800 East. Continuing North to 400 North to 200 East then to the high school. Finishing at the walkway.

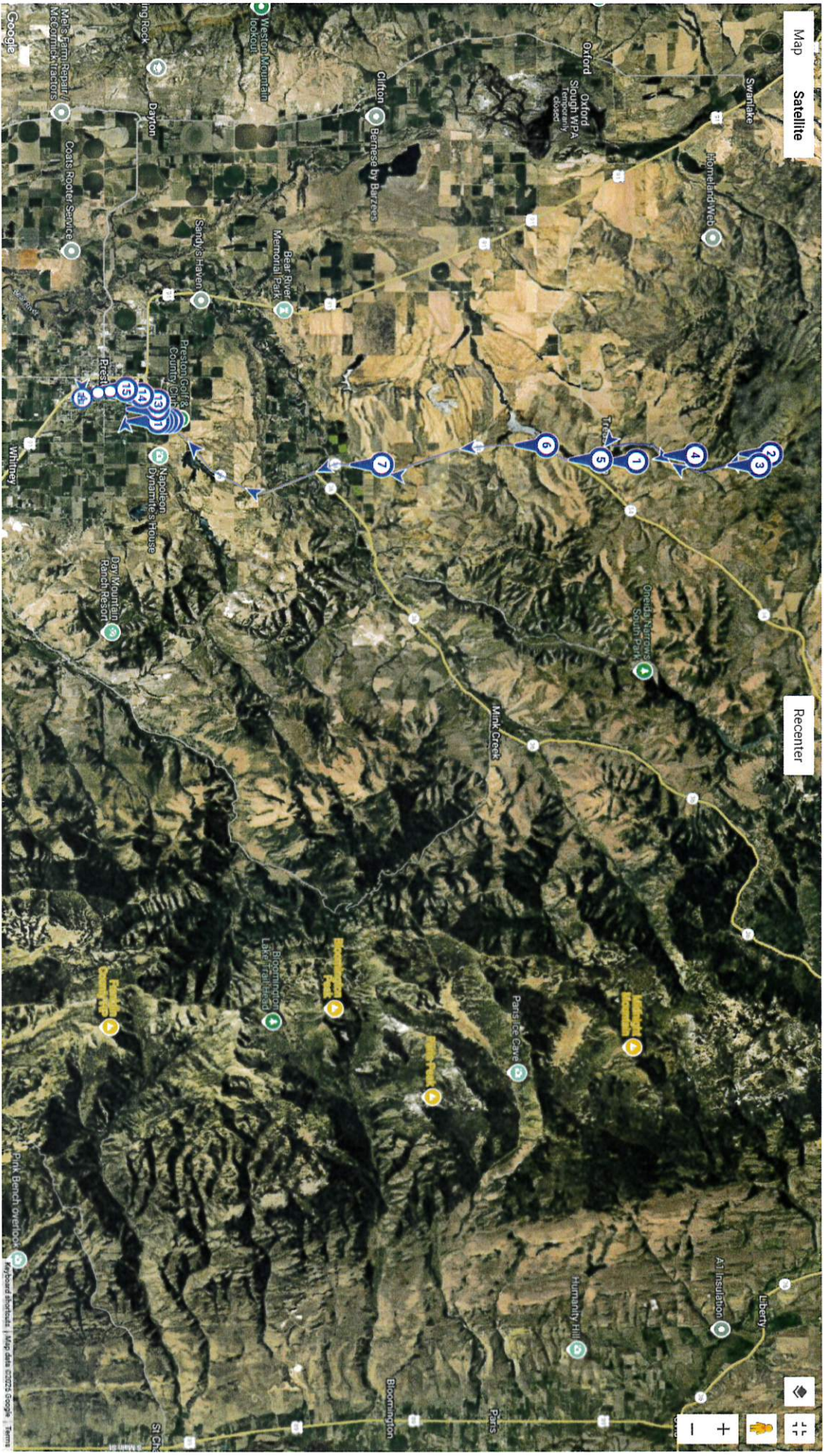
Stall 16: This bus picks up one stop on 2400 East and Cub River Road then one stop at 20 South State in Franklin then the Legacy subdivision. Dropping off high school students on the West side of school. School. Pick up a town stop at the library. Proceeds to the walkway.

Stall 17: Starts at 3<sup>rd</sup> East and 2<sup>nd</sup> North then stops at 1<sup>st</sup> East and 2<sup>nd</sup> North then loops around to the Cedarwood Apartments at 270 North and 2<sup>nd</sup> East. Will then proceeds to the walkway.

Stall 18: Starts at Valley View Drive and then to 1<sup>st</sup> East. Heading West on 5<sup>th</sup> South and then to South State Street. Going to 800 South and then over 400 West. Heading North on 4<sup>th</sup> West up to 400 South. After picking up students at two stops on 400 South. Going to the walkway to drop off.

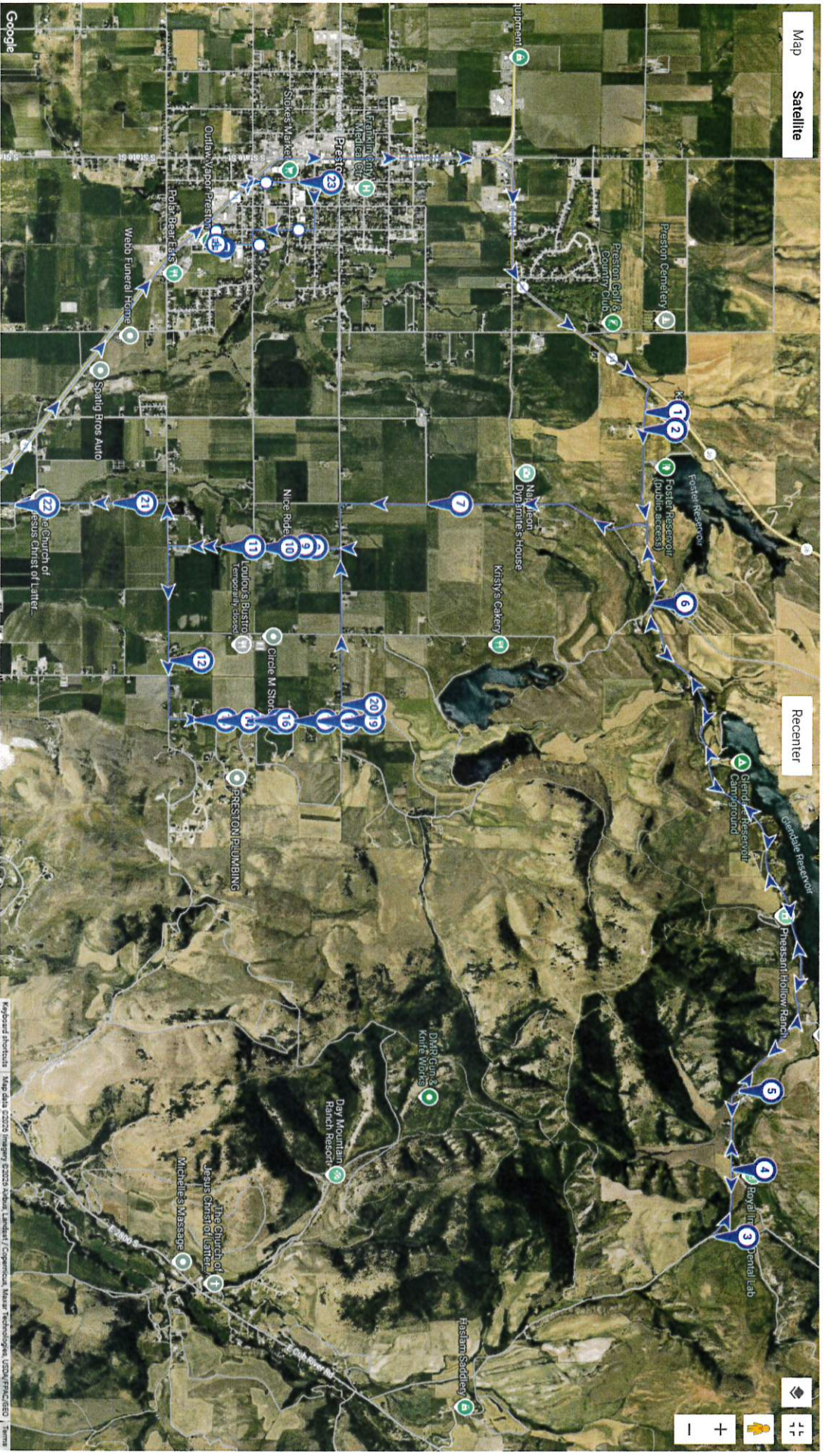
Stall 19: Starts at 100 South 320 East then goes east on Oneida South on 800 East picks up one stop in the golf course parking lot, one stop on the Hwy 34/36 by state sheds. One stop at 600 N State and finally one large stop at the fairgrounds. Drops students off at the walkway.



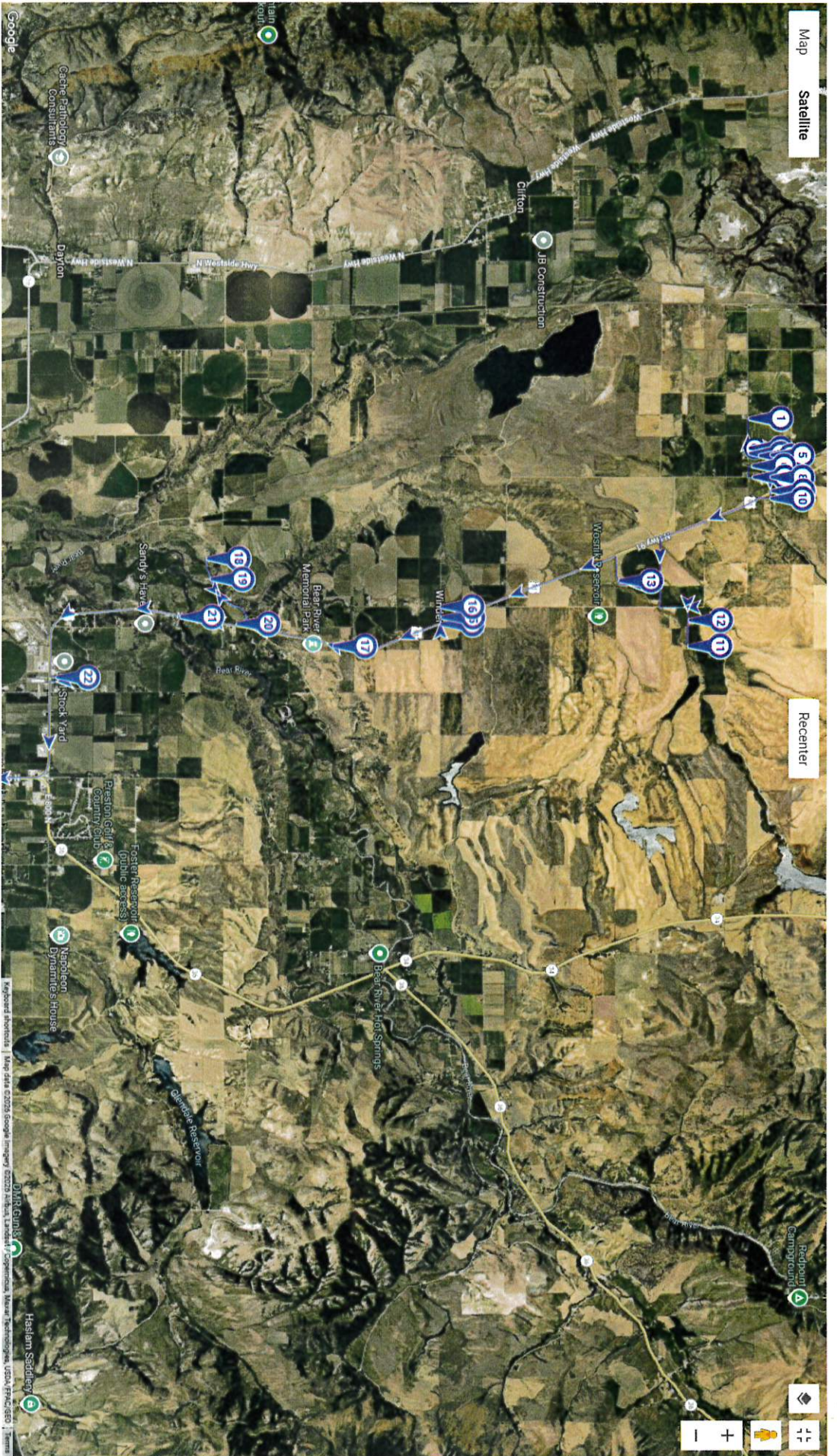


2





4



Map Satellite

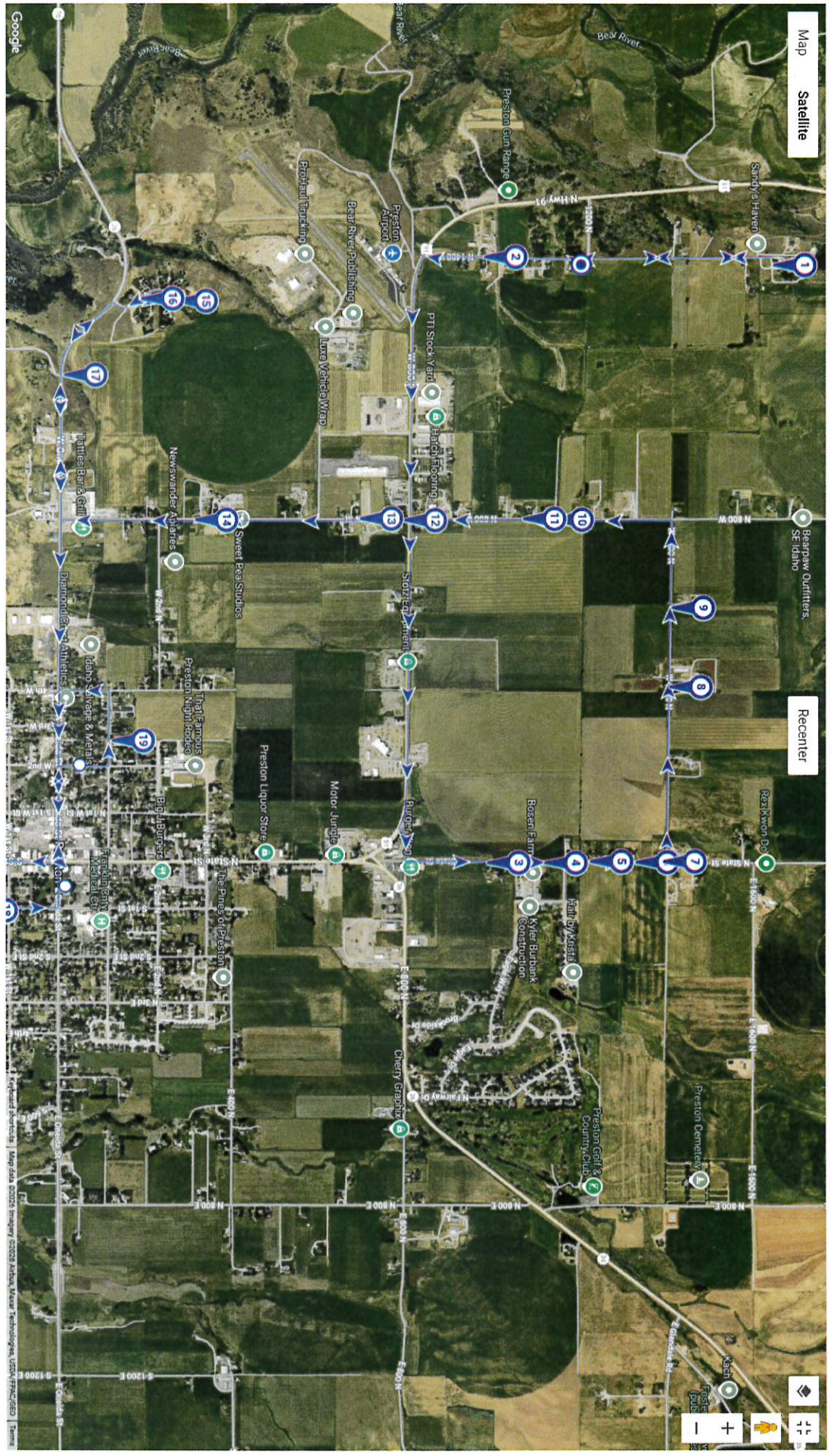
Recent

5

Map data ©2025 Google Imagery ©2025 Mapbox ©2025 OpenStreetMap contributors, USDA, EPA/CES

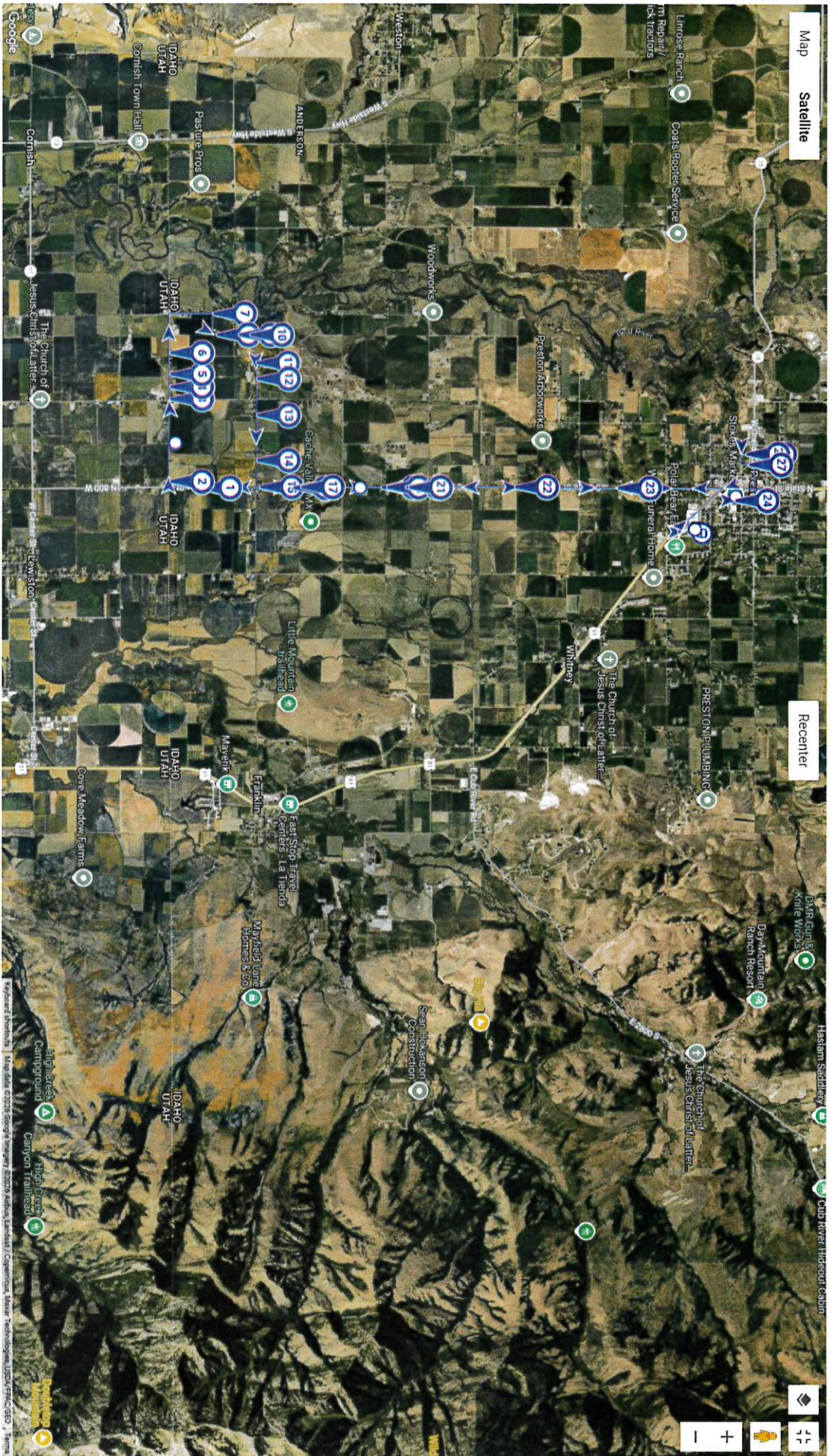
Map Satellite

Recenter



6

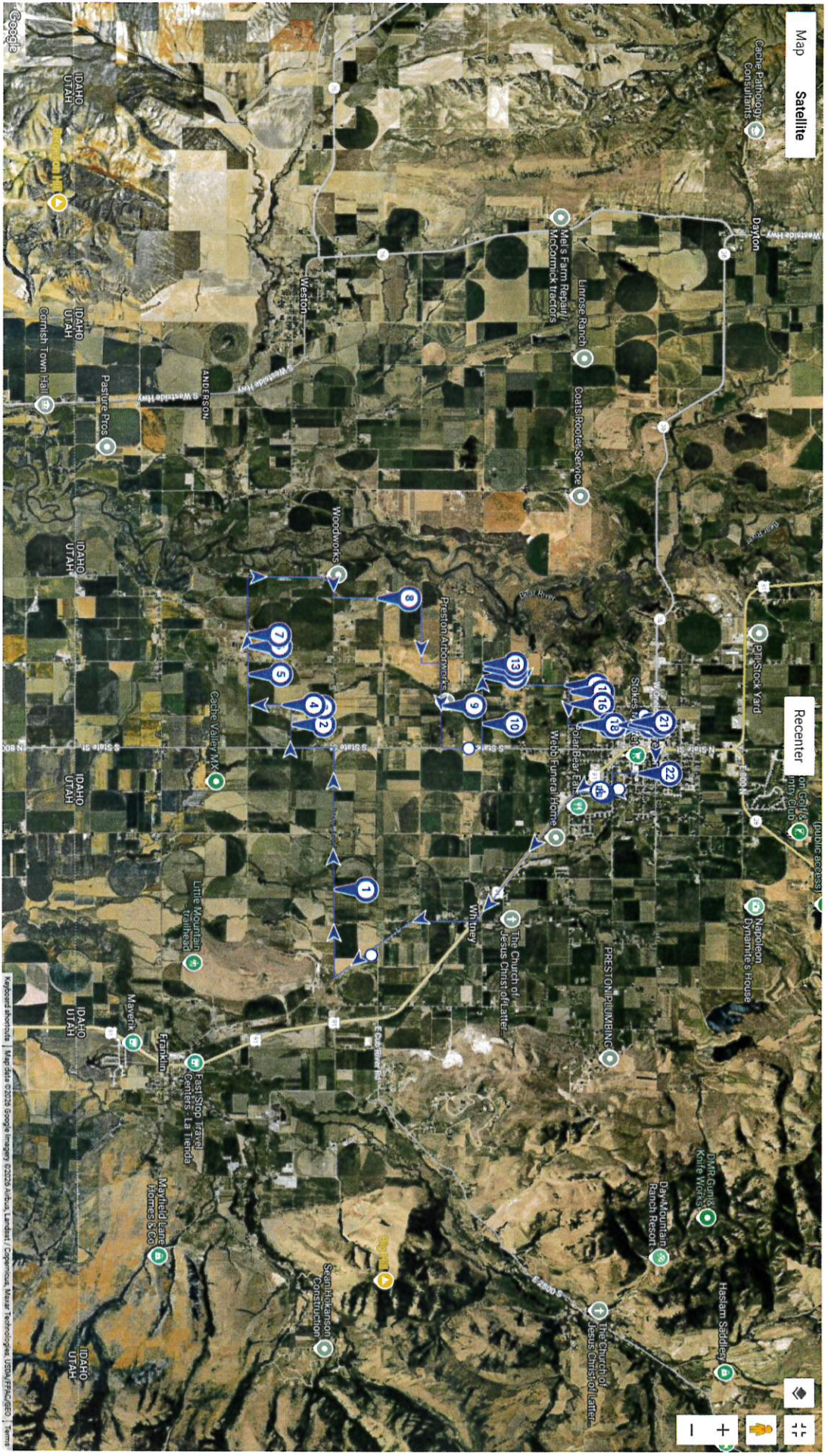
© 2025 Google



Map Satellite

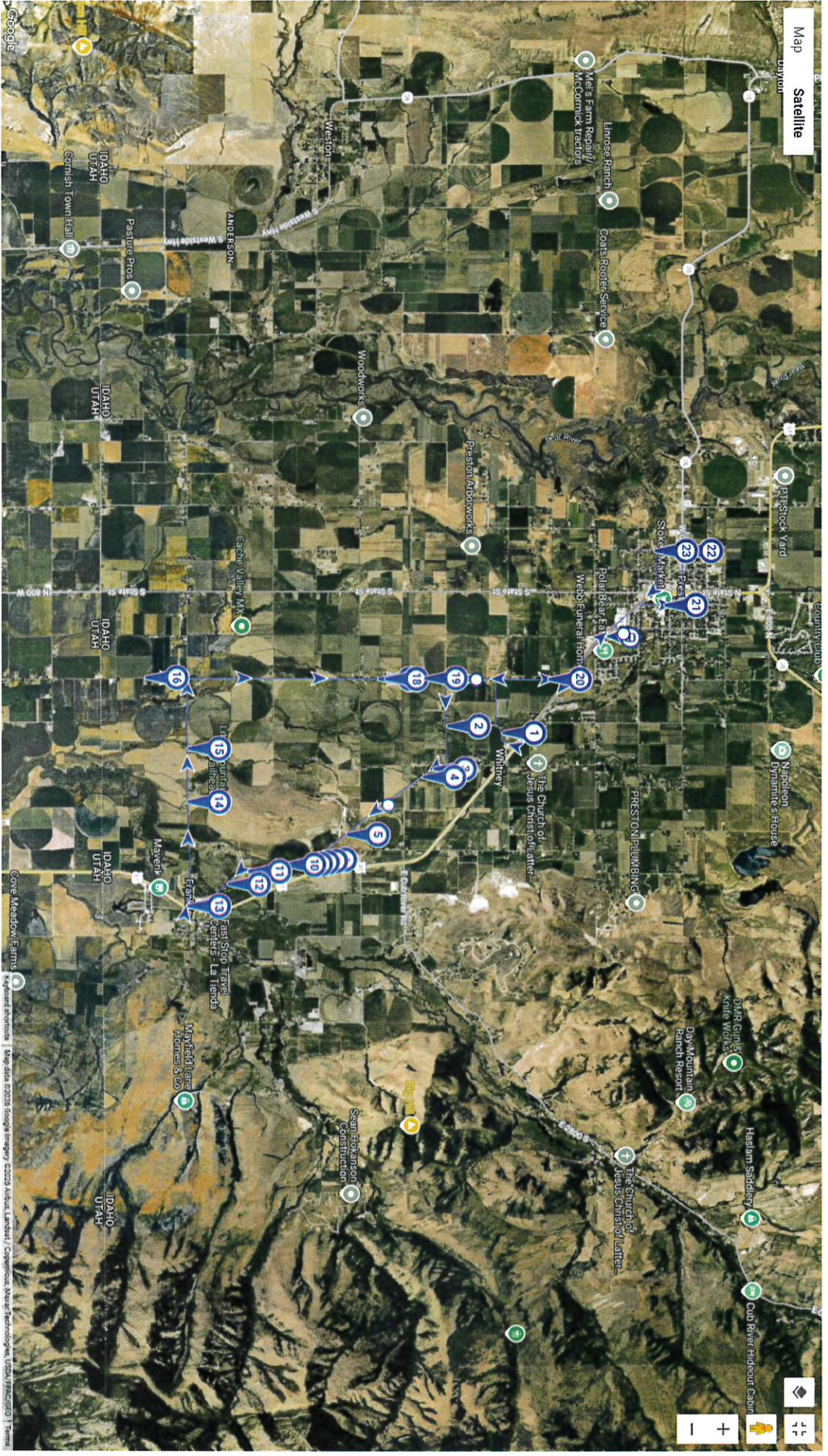
Recenters

7

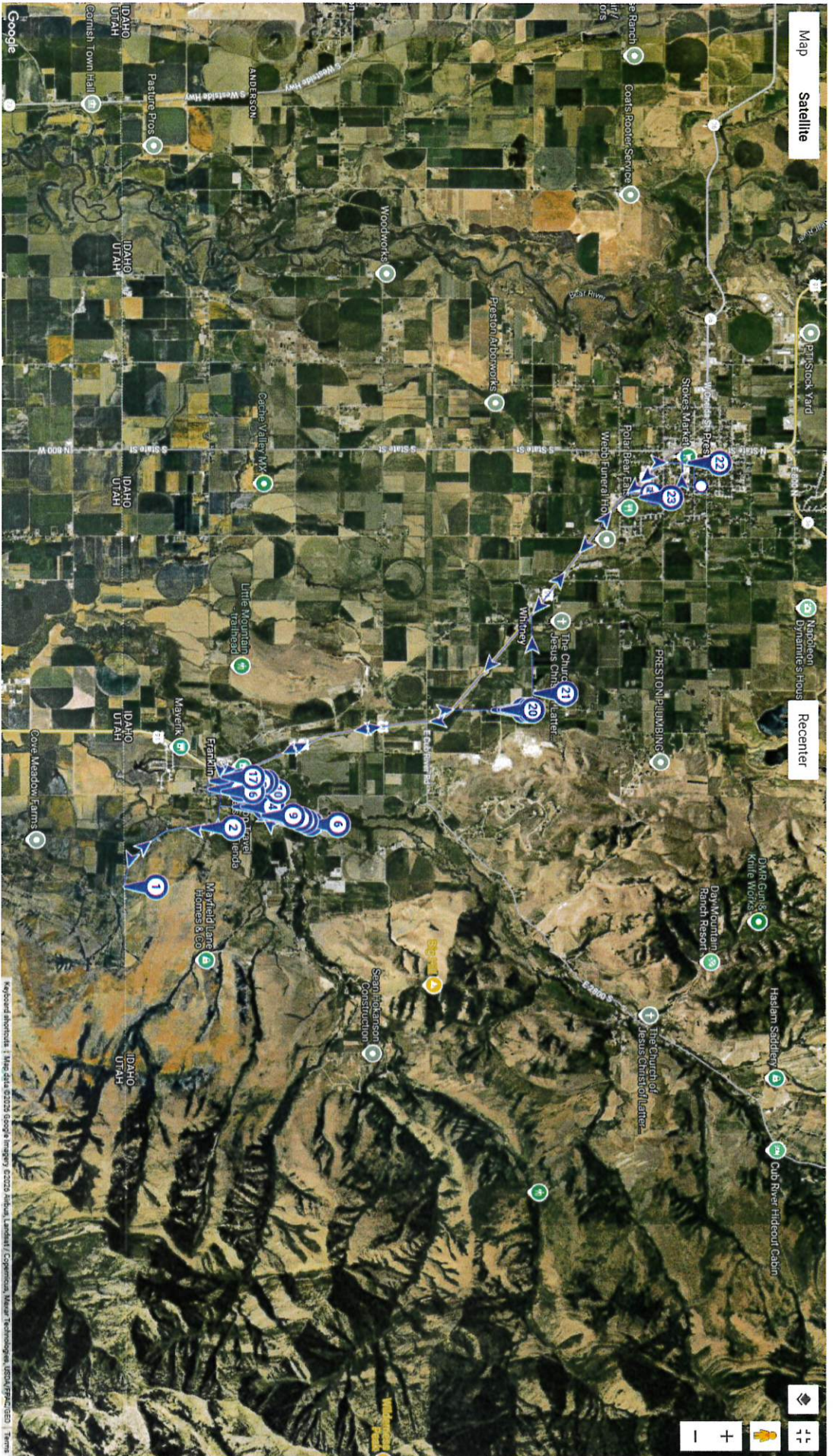


8





10

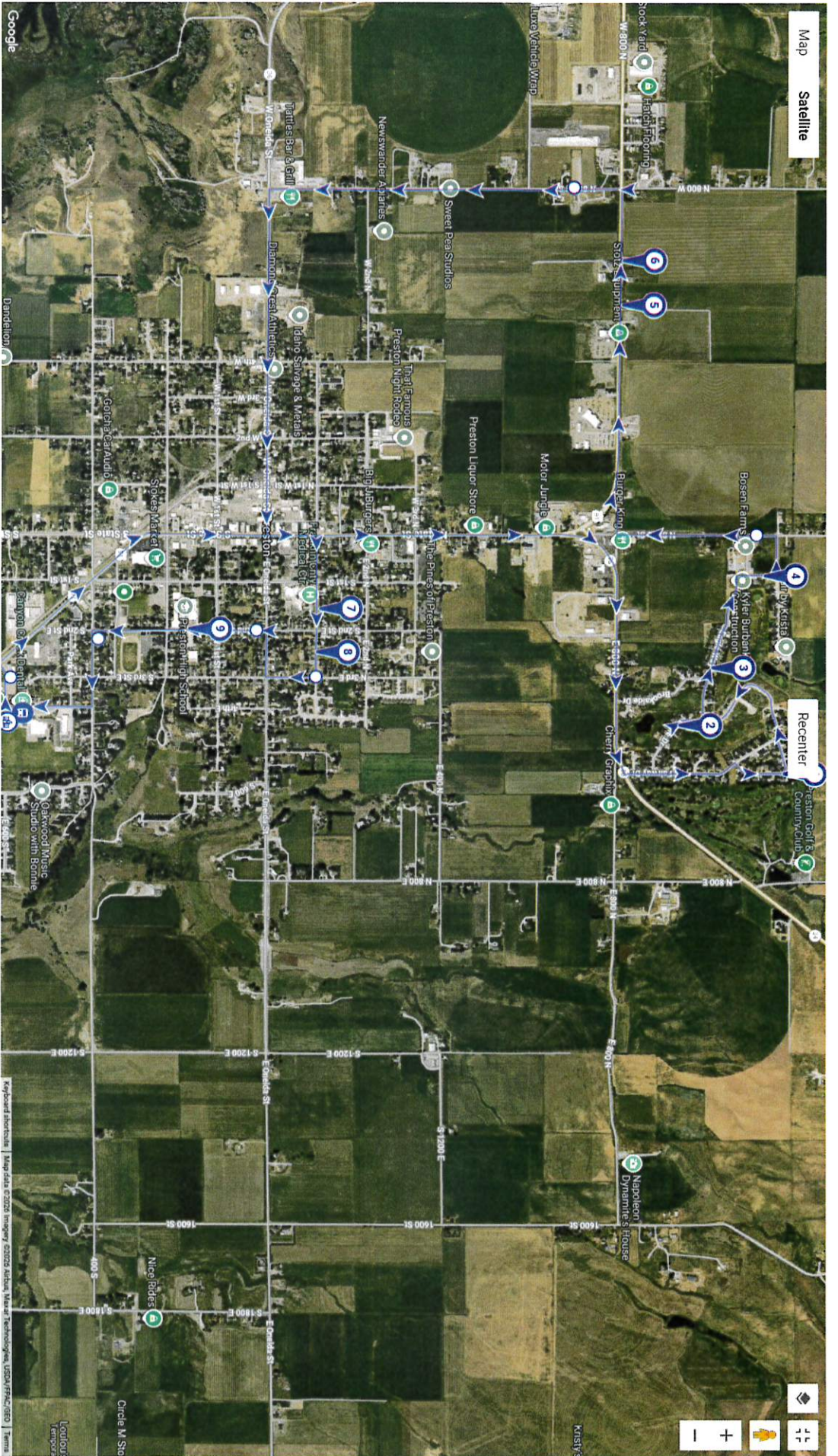


11

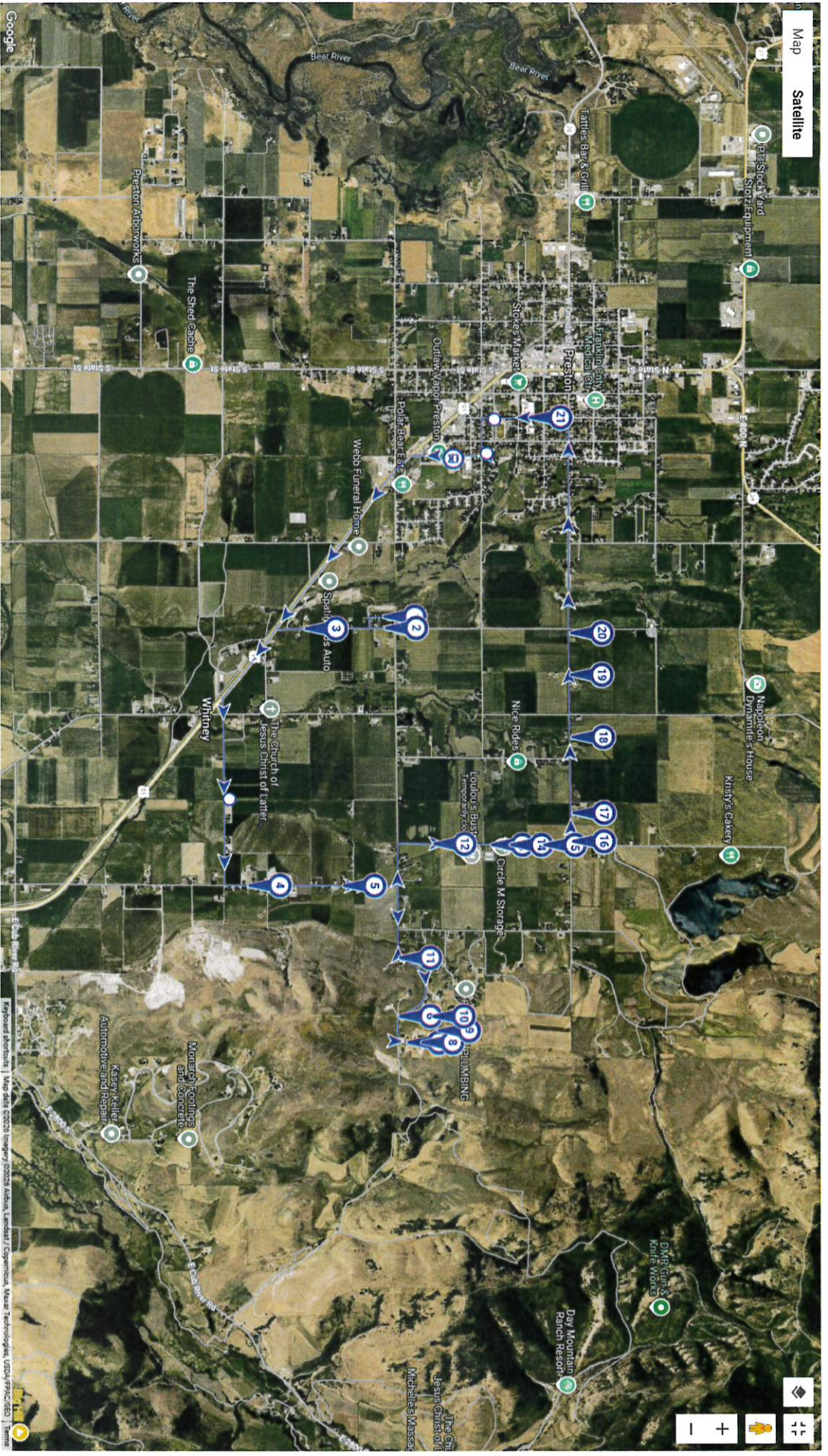




13

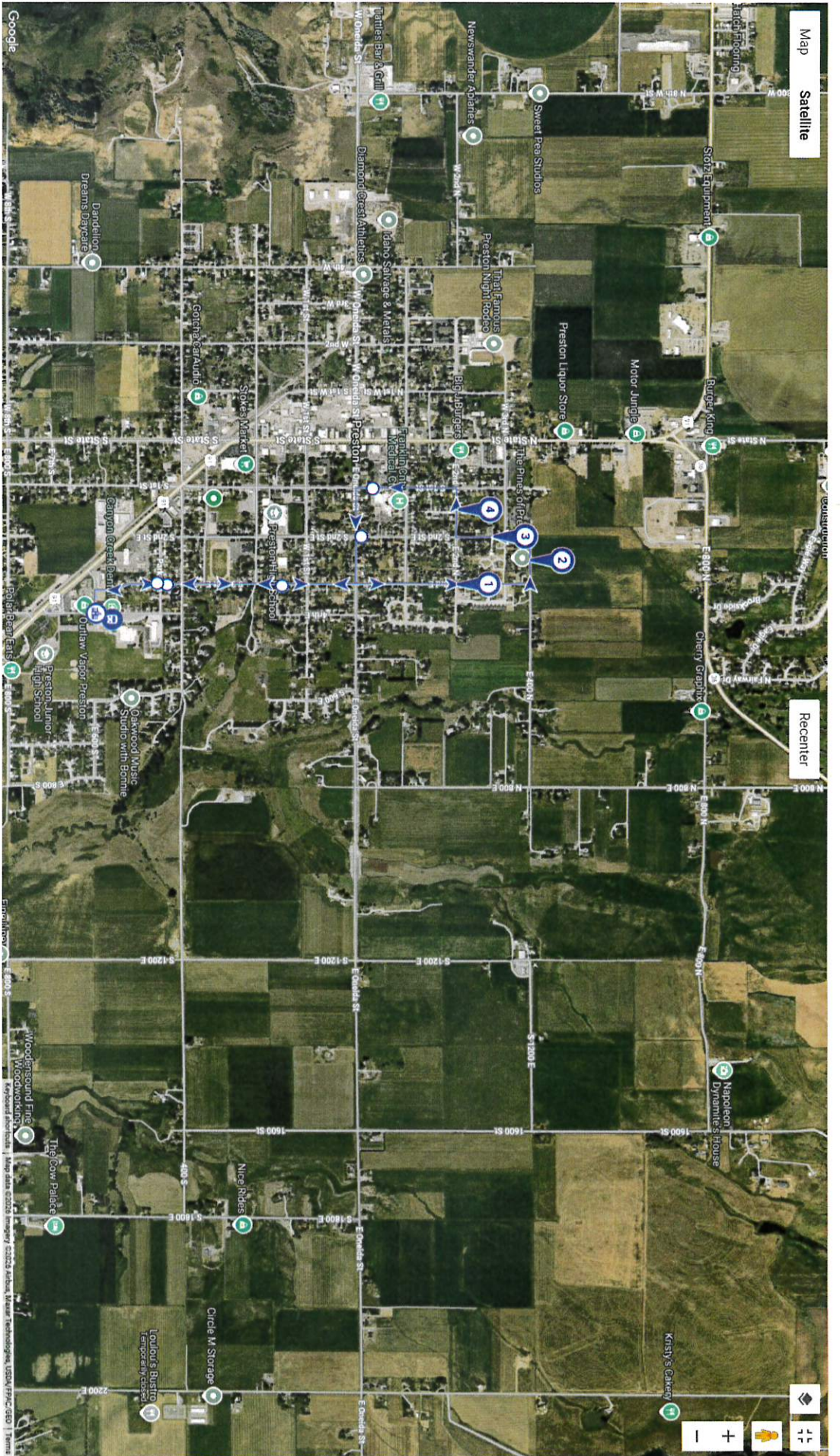


14

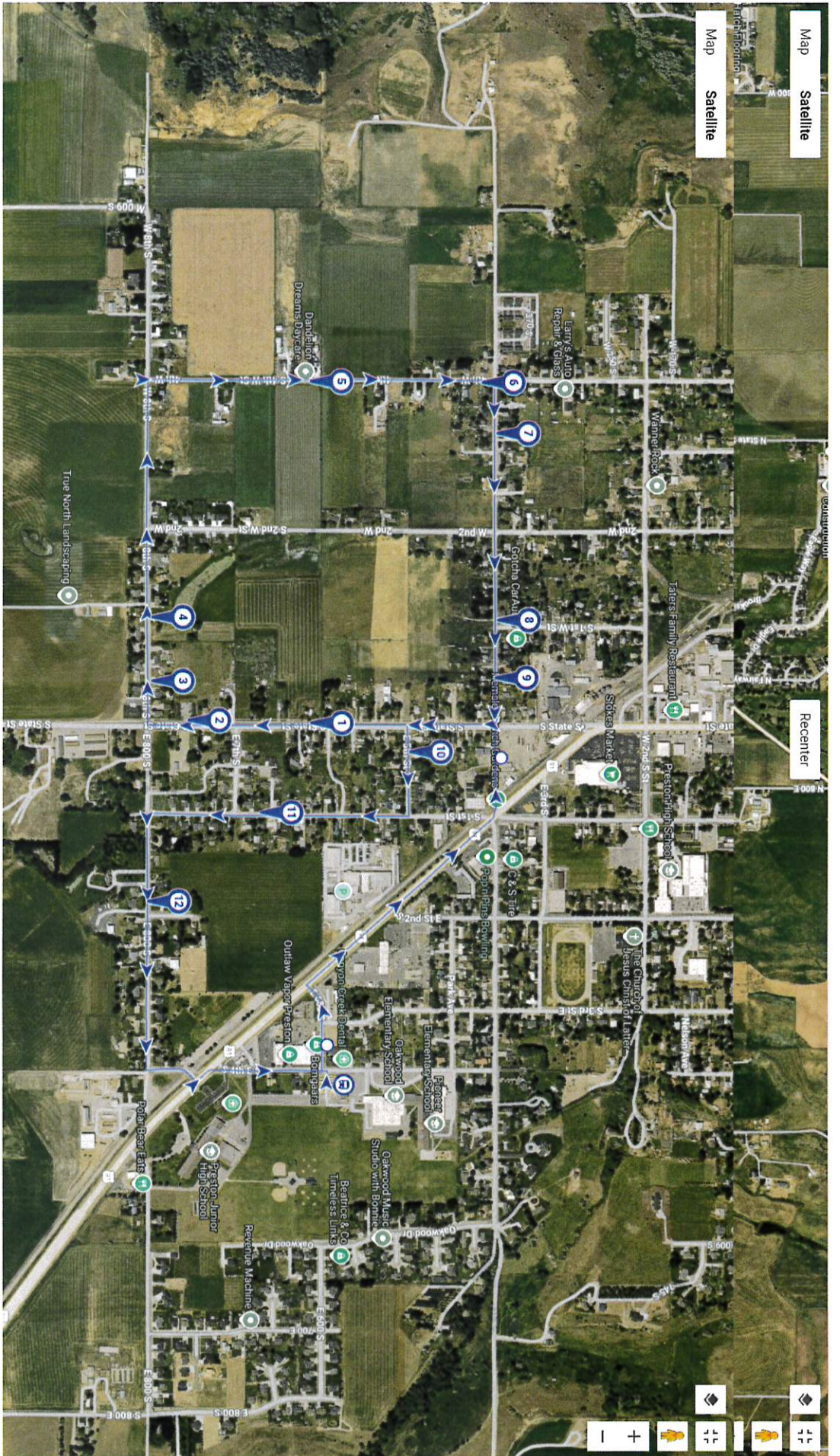


15

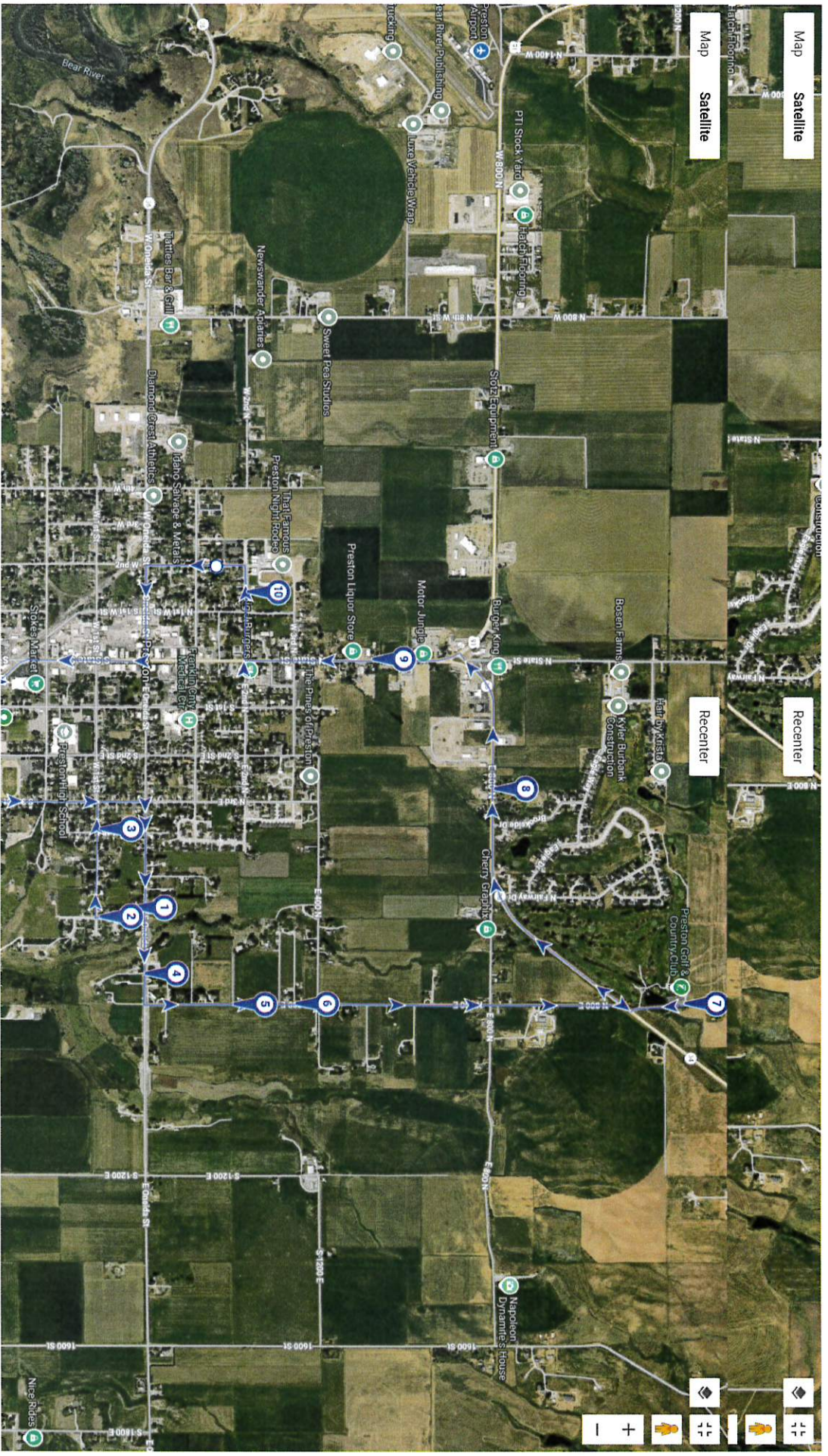




17



18



19