

## **CRETE-MONEE BOARD OF EDUCATION**

Regular Meeting – May 19, 2026

Crete-Monee Middle School Overnight Field Trip Request

2026-2027 Washington D.C., Williamsburg, and Jamestown Trip – **CONSENT**

Prepared by: Ghantel Perkins, Assistant Superintendent, Office of Teaching and Learning

### **The Issue:**

This is a request for Crete-Monee Middle School 8th-grade students and staff members to travel to Washington, D.C., during the 2026-2027 school year, from April 29, 2027, to May 2, 2027.

### **Justification:**

Participation in events of this type is a valuable learning experience that enriches leadership. This trip is a culminating experience for the 8th-grade curriculum. This year of study focuses on American History, including the foundation of our democratic government. The trip enables 8th-grade students to explore our nation's capital, including its monuments, memorials, and historical sites.

### **Board Policy and Past Practices:**

Board Policy 6:240: Overnight field trips require the Board of Education's approval.

### **Strategic Plan:**

Graduation Goal: 100% of students have a pathway to be enlisted, employed, or enrolled in a post-graduation program at the time of graduation.

ELA Goal: 100% of students can actively interact with and comprehend grade-level text, and/or at least 75% of students demonstrate mastery on Common Formative Assessments (CFAs).

### **Community Impact:**

Evidence indicates that parents and community members continue to support trips like this one.

### **Supporting Data:**

Please see the attached documentation, which includes the CM 201-U Overnight Field Trip Request Application, the tentative itinerary, registration form, and the School Tours of America Certificate of Insurance.

### **Financial Impact:**

The trip will be paid for through student fundraising and parental support.

### **Recommendation:**

The Office of Teaching and Learning recommends that the Board of Education approve the Crete-Monee Middle School 8th-grade trip to Washington, D.C., for the 2026-2027 school year.

### **Timeline for Decision:**

May 19, 2026

# Crete-Monee School District 201-U Field Trip Procedures and Guidelines

## Co-Curricular Overnight Field Trip Application

Sponsoring Staff Member: Kenneth Hiemer School: choose school CMMS  
 Destination of Trip: Washington DC, Williamsburg VA Student Group Traveling: CMMS 8th graders  
 Give a Brief Description/Purpose of the Trip: Historical Focus  
 Approximate Departure Date: April 29, 2027 Approximate Departure Time: 2:00 AM  
 Approximate Return Date: May 2, 2027 Approximate Return Time: 12:00 AM

Is an outside vendor (i.e., travel agency) being used to organize the trip? Choose Option yes  
If yes, a Certificate of Insurance naming the School and District as an additional insured is required and must be submitted with this application  
 Will a vendor, besides our current pupil transportation vendor (i.e., First Student), supply transportation services for the trip? Choose Option yes  
If yes, a Certificate of Insurance naming the School and District as an additional insured is required and must be submitted with this application  
School Tours of America

Number of School Days Missed (if any): Choose One 2 Method of Transportation: Coach Bus / Air  
 Approximate Number of Students Traveling: ± 100  
 Approximate cost per student: Transportation: All inclusive Food: All inclusive  
 Lodging: All inclusive Other (please define): \_\_\_\_\_  
 Approximate Total Cost per Student: \$1820  
 Brief Explanation of how This Trip will be Funded: - Student / Family Funded / Fundraising

Name and position (i.e., teacher, parent, coach) of adult chaperones:

Name	Position	Background Check
<u>Kenneth Hiemer</u>	<u>Teacher</u>	<u>Employee</u>
<u>TBD</u>		
<u>10:1 Ratio</u>		

[Signature]  
 Signature of Person Making Request

[Signature]  
 Signature of Building Administrator

[Signature]  
 Signature of Superintendent/Designee

4-20-26  
 Date

4-24-26  
 Date

7-27-26  
 Date

Signatures indicate conceptual approval of this trip. If the trip is rescheduled for any reason (i.e., inclement weather), the Board of Education will be notified of the rescheduled dates, and additional approval will not be necessary.

A detailed itinerary must be provided to your building principal/designee closer to the departure date of the trip.



Dear Kenneth,

On behalf of School Tours of America, thank you for the opportunity to plan this life-changing, educational tour. I look forward to planning the best tour possible for you and your students. Communication is important; therefore, I am available anytime by phone or email. Please read the important information below.

Contact	Name	Direct Line	Email
Tour Coordinator	Lee Ann Ashburn	888-660-0374	Leeann@sta-mail.com
Rooming List	Maria Heavener		Rooming@sta-mail.com
Customer Service	For parents	866-543-9625	Billing@sta-mail.com

**Please review the following information for your upcoming tour:**

<b>Group</b>	Crete-Monee Middle School	<b>Transportation</b>	AIR
<b>Departure Date</b>	04/29/27	<b>Departure Airport</b>	MDW
<b>Return Date</b>	05/02/27	<b>Group Phone</b>	708-367-2400
<b>Trip #</b>	B860	<b>Group Leader ID #</b>	8109
<b>Chaperone Ratio</b>	1:10	<b>Email</b>	hiemerck@cm201u.org
<b>Quad Price</b>	1820	<b>Home Phone</b>	
<b>Double Price</b>	2090	<b>Cell Phone</b>	708-238-5256

**MyTour Portal** is an online control center for managing trip information and registered participants. MyTour Portal provides an easy way to: create a tour website (MyTour), send custom announcements to participants, and submit rooming configurations. To activate MyTour Portal:

- Visit [www.schooltoursofamerica.com](http://www.schooltoursofamerica.com) and click on "Login" on the top of the page.
- Enter **Trip # B860** and your **Group Leader ID 8109**
- Verify your email and create a user password

**MyTourFund.com** is a website that allows participants and Group Leaders to raise funds and apply them directly to their trip. All users must have a MyTour Portal account to have access to MyTourFund.com. Contact me with any questions regarding MyTourFund.com.

Finally, please be sure to complete the **Pre-Tour Profile**, found on the home screen of MyTour Portal. This provides valuable information to customize your tour and allows us to get to know you better. I'm very pleased to have the opportunity to work with you, and I look forward to talking to you soon!

Sincerely,  
 Lee Ann Ashburn  
 Tour Coordinator



# LET'S GO

B551/LA/26

## Washington, DC, Williamsburg and Jamestown Trip

To all 2027 Crete-Monee Middle School, 8th Grade Students,

I am excited to announce that Crete-Monee Middle School students are traveling to Washington, DC and Colonial Virginia, to engage in history and government firsthand. This learning program is a once in a lifetime opportunity for your child to experience the power of travel!

Throughout our experiential journey, students **will**:

- Visit historic landmarks including the Lincoln Memorial, Capitol Hill & Mt. Vernon
- Learn about our heroes and the sacrifices they made while visiting Arlington National Cemetery and all the Monuments and Memorials around DC
- Travel back in time to discover the shaping of Colonial America and the excitement of gaining our independence

I have chosen School Tours of America as our travel planner due to their decades of experience, outstanding safety record, and exceptional customer service. Our tour is school sponsored. I will lead our group, along with other chaperones as needed. In addition, representatives from School Tours of America will be available throughout our entire trip.

Space is limited. Register online now at [SchoolToursOfAmerica.com](http://SchoolToursOfAmerica.com), or complete the enclosed registration.

*Kenneth Hiemer*

*Group Leader/ Teacher*

E-mail: *hiemerk@cmzou.org*

# Crete-Monee Middle School-Sample Itinerary: Washington, DC and Williamsburg

## 4 Days / 3 Nights

May 1, 2025	May 2	May 3	May 4
Transfer Bus to MDW Group departs for DC	<b>BREAKFAST</b>	<b>BREAKFAST: Hotel Buffet</b>	<b>BREAKFAST: Hotel Buffet</b>
<b>LUNCH</b>	<b>Jamestown Settlement Park:</b>	<b>Arlington National Cemetery:</b>	White House picture stop <b>Capitol Hill:</b>
Lincoln, Vietnam, Korean, WWII Memorials Washington Monument	- Old/New World Pavilions - Indian Village - Old Fort - Replica Ships	- Tomb of the Unknowns - Changing of the Guard - Kennedy Gravesites - Challenger Memorial	- <b>U.S. Capitol Tour</b> - <b>Group Photo</b> - Supreme Court - Library of Congress
FDR, Jefferson, MLK Memorials Group travels to Williamsburg	<b>LUNCH</b>	<b>LUNCH</b>	<b>National Archives</b>
<b>DINNER</b>	<b>Colonial Williamsburg:</b>	<b>Holocaust Museum</b>	<b>LUNCH</b>
<b>Check into Hotel with Security on duty</b>	- Capitol - Jail - Raleigh Tavern - Printer-Bookbinder - Bruton Parish Church - Magazine - Craft Shops - Governor's Mansion	<b>Smithsonian Museums:</b>	<b>Mt. Vernon</b>
<b>Evening activity in Williamsburg (possibly Early American Medical Program)</b>	<b>DINNER</b> Group travels to Washington, DC <b>Check into Hotel with Security on duty</b>	Explore Old Town Alexandria Iwo Jima Memorial Fun evening activity Return to Hotel <b>Security on Duty</b>	<b>Tour Home and Grounds of George Washington</b>
			<b>Mt. Vernon Educational Center</b> Experience Revolutionary War Days
			<b>DINNER</b>
			<b>*All meals included (except breakfast on first day)</b>



**THIS IS A SAMPLE ITINERARY. YOUR CUSTOM ITINERARY IS IN THE WORKS. JUST WAIT. IT'S GOING TO BE GOOD!**

# LIFE IS UNPREDICTABLE, WHY TAKE THE RISK?

## SECURE YOUR PAYMENTS WITH A PLAN YOU CAN TRUST

We created the Payment Protection Program (PPP) because we understand that things happen: the flu spreads, family emergencies arise, jobs change, and sometimes your team makes it to the playoffs. With the Payment Protection Program, we've got your back.

**PROTECTION** - Protect your investment and receive a \*Full Refund should you or your group need to cancel anytime prior to departure.

**PEACE OF MIND** - Your payments are covered from the moment you register. Return travel expenses are covered for family emergencies.

**SIMPLICITY** - To enroll, agree to the PPP when you register. You can also include the PPP in your payment schedule.

\*For details see Terms and Conditions at:  
[www.SchoolToursOfAmerica.com/terms-conditions](http://www.SchoolToursOfAmerica.com/terms-conditions)



## EARN YOUR TRIP WITH MYTOURFUND.COM

### LOG IN

Register and sign up for a free MyTourFund account

### LOVE IT

Add pictures, video and your unique message

### LAUNCH IT

Share your page with friends and family

Call: 866.543.9625 or Visit: [SchoolToursOfAmerica.com](http://SchoolToursOfAmerica.com)

Trip Date: 04/30/26 - 05/03/26 For: Crete-Monee Middle School

**REGISTER ONLINE NOW** at [www.SchoolToursOfAmerica.com](http://www.SchoolToursOfAmerica.com)

Registration Type:  Student  Adult Traveler's Date of Birth: \_\_\_ / \_\_\_ / \_\_\_  Male  Female

Trip #: B551

Traveler's Full Legal Name: \_\_\_\_\_

(First) (Middle) (Last)  
 Traveler's full legal name must be provided, as it appears on an official document to help assure airline and TSA compliance

Parent/Guardian Name: \_\_\_\_\_

Mailing Address: \_\_\_\_\_

City: \_\_\_\_\_ State: \_\_\_\_\_ Zip: \_\_\_\_\_

Parent's Cell Phone: (\_\_\_\_) \_\_\_\_\_ - \_\_\_\_\_ Secondary Phone Number: (\_\_\_\_) \_\_\_\_\_ - \_\_\_\_\_

Parent/Legal Guardian Email: \_\_\_\_\_

Enclosed is my check payable to School Tours of America in the amount of \$ \_\_\_\_\_ (Minimum payment of \$99 is required)

Pay by credit card:  Visa  MasterCard  Discover  Amex

Credit Card #: \_\_\_\_\_ Amount to Charge: \$ \_\_\_\_\_ Exp.: \_\_\_ / \_\_\_ CVV: \_\_\_\_\_

Cardholder Name (print): \_\_\_\_\_

Signature: \_\_\_\_\_

By signing here, I have read and agree to STA's Terms & Conditions, which can be found at [www.SchoolToursOfAmerica.com/terms-conditions.html](http://www.SchoolToursOfAmerica.com/terms-conditions.html), and I confirm my PPP selection.

Please Select:  I AGREE to protect my payments with the Payment Protection Program (recommended)  I DECLINE to protect my payments with the Payment Protection Program, understanding that I may lose my money if the trip is canceled for any reason.

**T-Shirt: \$20.00**  
 Youth L  
**Adult sizes:**  
 S  M  L  
 XL  XXL



**SCAN ME**

## WHAT'S INCLUDED:



Close-in hotels



Trip Concierge



Transportation



Licensed guides



MyTourFund.com



Admissions



Insurance



Private security



Drawstring bag

# IMPORTANT TOUR INFORMATION

## Tour Details

Trip #: B551 Departing: 04/30/26 Returning: 05/03/26  
Destination: Washington, DC, Williamsburg and Jamestown  
Group Leader: Miranda Ryder  
Contact Details: ryderm@cm201u.org

## Early Registration Special

Take advantage of discount pricing when you register by July 1<sup>st</sup>! Space is limited and available on a first come, first served basis. The price is based on 35 full-paying travelers.

Add the **Payment Protection Program (PPP)** to your tour price for only \$229.00 to receive a **FULL REFUND** if you cancel **ANYTIME** for **ANY REASON** prior to trip departure. (See Terms and Conditions for full details.)

	(4 per room)	(2 per room)
Early registration	\$1,685.00	\$1,955.00
After July 1st	\$1,799.00	\$2,069.00

## Payment Plans

Save time and avoid fees by making manageable, monthly payments with EzPay. (Available with online registration only.)

OR

Mail in monthly payments utilizing STA payment coupons. (Incurs \$6 handling charge per payment.)

## Register today to enjoy savings!

Registration Deadline: 07/01/25

Required Deposit: \$99.00 (Your deposit is applied to the total trip cost.)

Final Payment Due Date: 02/19/26

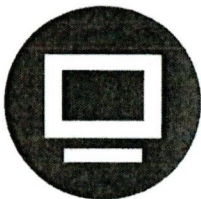
## Have questions?

Learn more at our informational meeting. Details to follow.



\*The above pricing is all-inclusive unless otherwise specified in the enclosed materials.

# SPACE IS LIMITED. RESERVE YOUR SPOT TODAY!



## REGISTER ONLINE

Select "register" in the upper right corner at:  
SchoolToursOfAmerica.com



## ENROLL IN EzPay

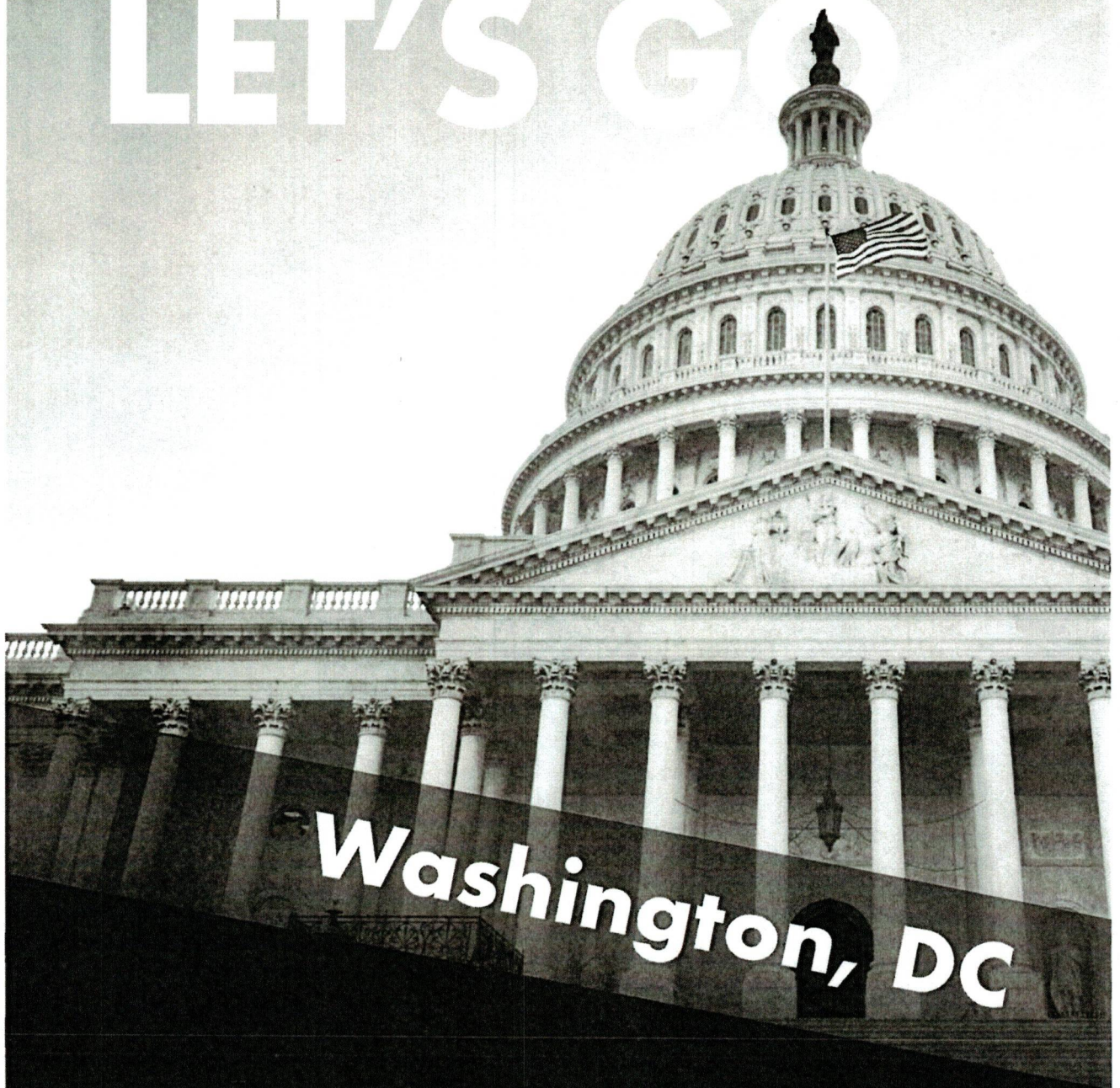
Make monthly payments & avoid fees with EzPay. **EzPay is available online only.**



## OPT-IN TO THE PPP

Protect your investment & receive a refund if you cancel prior to trip departure.

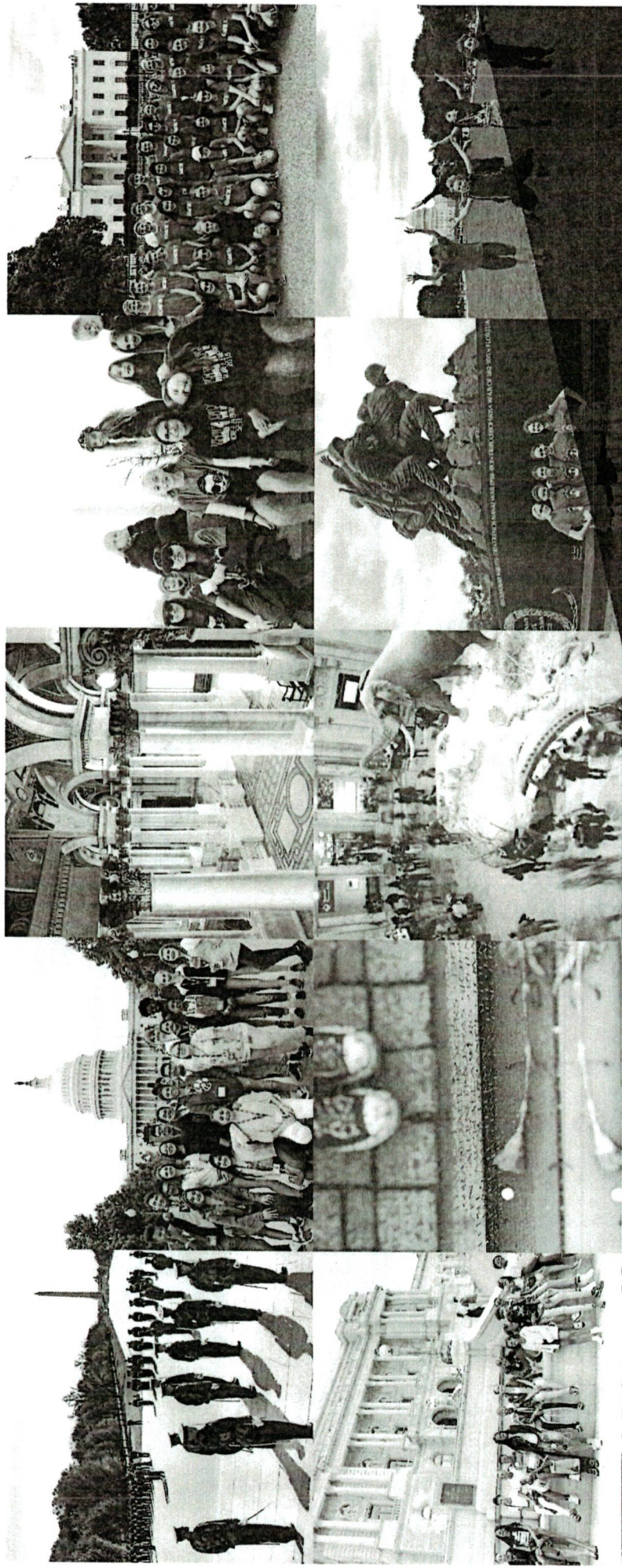
**LET'S GO**



**Washington, DC**

 **SCHOOL TOURS OF  
AMERICA**

**Register today at [www.SchoolToursOfAmerica.com](http://www.SchoolToursOfAmerica.com)**



Images submitted by travelers to our annual photo contest using:  
**#MYTOURVIEW**

“

This transformative tour provides unlimited growth opportunities; your child will return a more passionate student, a more conscientious citizen, and a more mature person.

# THE BENEFITS OF EDUCATIONAL TRAVEL WITH SCHOOL TOURS OF AMERICA



## Personal Growth

Studies have shown that students who travel see improvements in grades and behavior. Your child will gain tremendous confidence and independence while traveling with classmates.



## Empowered Citizenship

Travelers realize their potential to positively shape America's future as they experience deeply meaningful sites such as Arlington National Cemetery, the Supreme Court and the National Archives.



## Educational Opportunities

Available interdisciplinary learning opportunities include: college credit, leadership programs and service learning experiences.



You will realize that your students the same because they will never be the same. This experience is life-changing.

I HAVE A DREAM  
MARTIN LUTHER KING, JR.  
THE MARCH ON WASHINGTON  
FOR JOBS AND FREEDOM  
AUGUST 28, 1963



Watch video testimonials by students, parents & teachers at:  
[www.SchoolToursOfAmerica.com/wall-parents.html](http://www.SchoolToursOfAmerica.com/wall-parents.html)



## Need help raising funds for your trip?

Utilize the power of social media with our exclusive crowdfunding platform, MyTourFund.com, where 100% of donations are applied to your trip!

**This free fundraising tool allows each registered student to create a personal website where they can:**



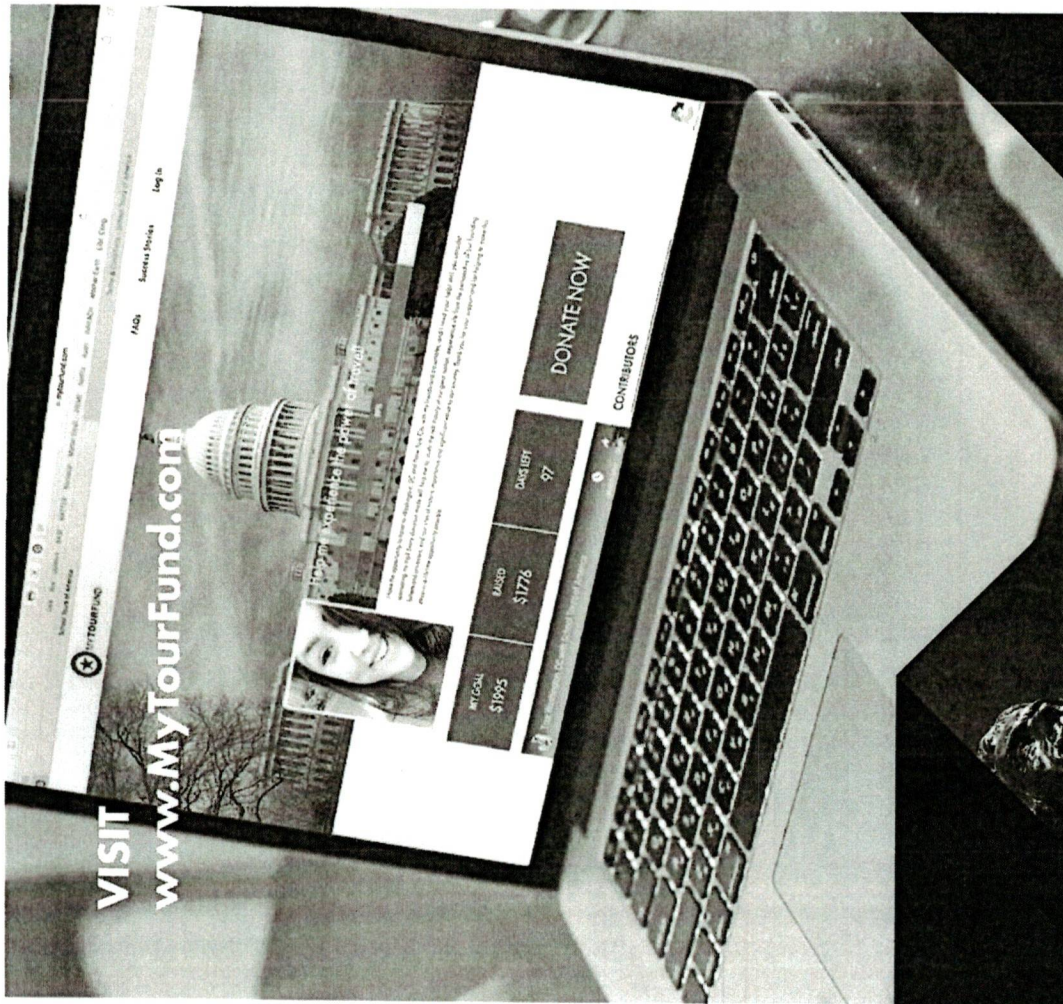
CREATE & CUSTOMIZE  
THEIR PAGE



SHARE WITH FRIENDS  
& FAMILY



RECEIVE DONATIONS  
AUTOMATICALLY



VISIT  
[www.MyTourFund.com](http://www.MyTourFund.com)



MyTourFund.com  
participants raise an  
average of **\$900**  
for their tour

## COMMITMENT TO HEALTH & SAFETY

Not to brag, but we have the best safety record in student travel for a reason! Our decades of experience helped us craft new safety policies, protocols, and procedures to keep travelers safe at every step. Curious? Check it out at: <https://schoolsofamerica.com/safetravel>.



### TRIP Strong

To create a strong and safe approach to your next trip, your Group Leader may designate a "medical chaperone" to accompany the tour and provide support if needed.



### TRIP Swag

The complimentary STA drawstring bag can be used throughout your tour to store useful trip swag like your STA t-shirt and your lanyard with emergency contact card.



### Safety & Security

All tour staff is trained using a detailed Safety Contingency Plan. Our East Coast office provides immediate response and communication with local and federal authorities, and maintains a 24/7 dedicated, toll-free phone line exclusively for parents and students.



### Trip Concierge

On every tour is staffed with a Trip Concierge who can meet the group at the hotel, and if necessary, provide students and teachers with assistance as needed.



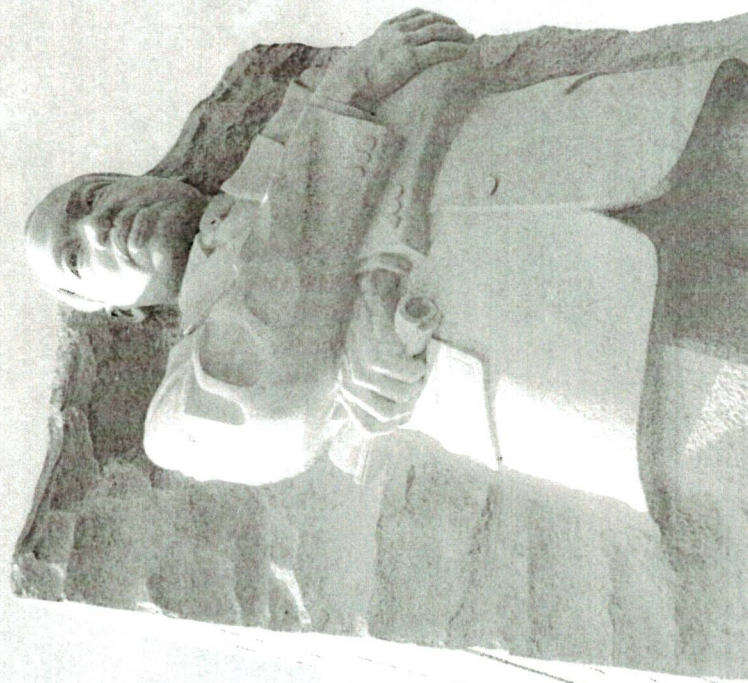
### Professional, Bonded Security

Private guards are stationed on hotel floors each night, ensuring that students adhere to the strict nightly curfew.



### Full Insurance Coverage

Tour participants are automatically covered by medical, dental and accident insurance.



Every member of the School Tours of America family shares the united mission of providing your child the safest, most memorable tour that will become a milestone in their life.



## PAYMENT PROTECTION PROGRAM (PPP)

**Life is unpredictable. We've got you covered.**

Add the PPP to your tour price to receive a **FULL REFUND** (less the cost of the PPP) if you cancel **ANY TIME** for **ANY REASON** prior to trip departure.\*



### Benefits

- 100% refund prior to trip departure
- Include cost of program in payments
- Travel home due to family emergency
- Lost luggage protection

PPP

- ✓
- ✓
- ✓
- ✓

### Full Refund Examples

- Illness
- Family emergency
- Trip cancellation by school or group leader
- Behavior / academic issues
- Sports conflict
- Financial difficulty

PPP

- ✓
- ✓
- ✓
- ✓
- ✓
- ✓

## ORDER YOUR SOUVENIR T-SHIRT

(Ask your Group Leader if the t-shirt is already included in your trip cost.)

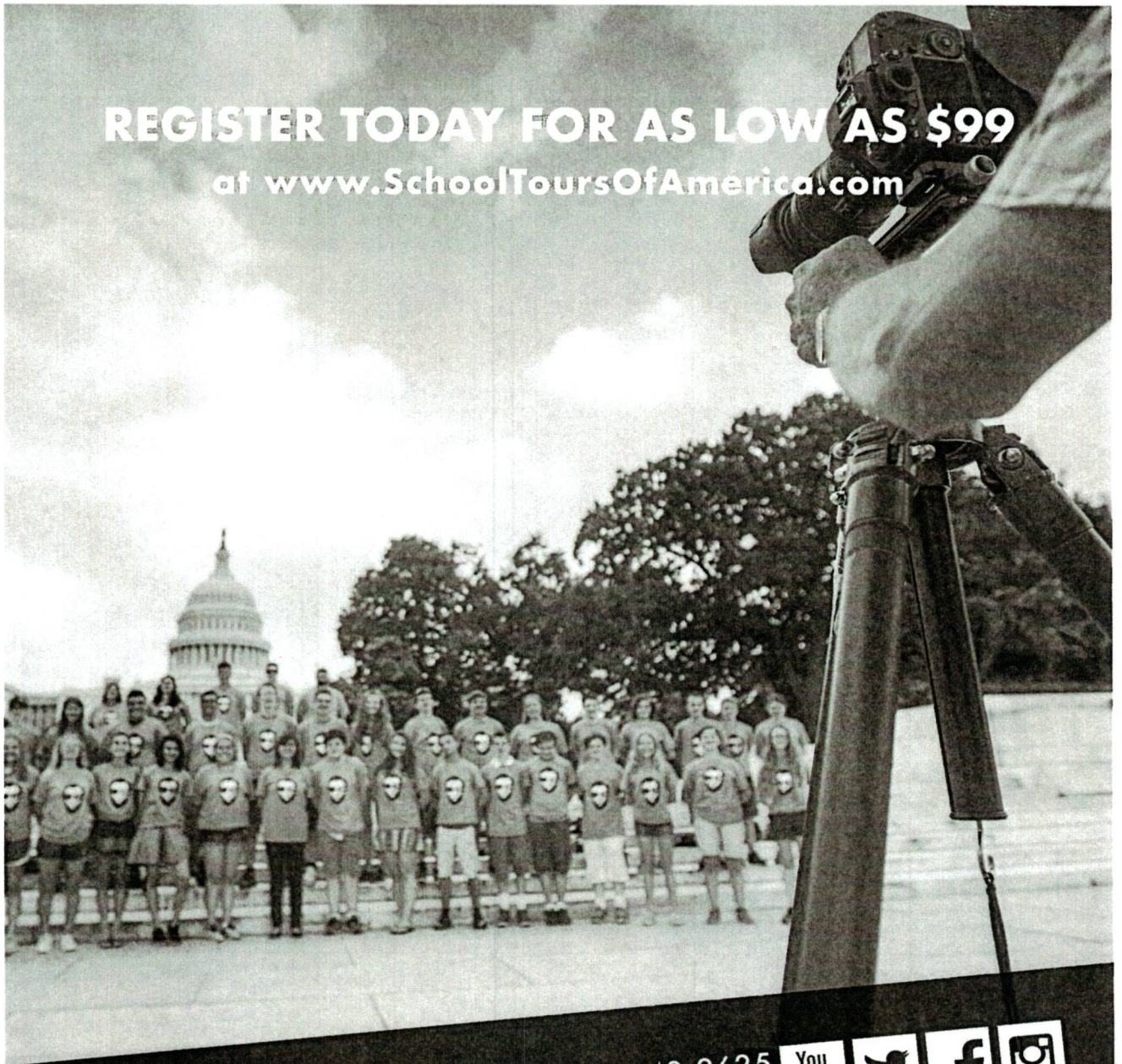


For a convenient way to pay for your trip, select EzPay when you register online



\*For PPP pricing and details see: [SchoolToursOfAmerica.com/terms-conditions.html](http://SchoolToursOfAmerica.com/terms-conditions.html)

**REGISTER TODAY FOR AS LOW AS \$99**  
at [www.SchoolToursOfAmerica.com](http://www.SchoolToursOfAmerica.com)



866.543.9625  
[www.SchoolToursOfAmerica.com](http://www.SchoolToursOfAmerica.com)



**REGISTER ONLINE**

Select "register" in the upper right corner of the homepage at [SchoolToursOfAmerica.com](http://SchoolToursOfAmerica.com)



**ENROLL IN EzPay**

Make manageable monthly payments & avoid fees with EzPay. EzPay is available online only.



**OPT-IN TO THE PPP**

Protect your investment & receive a refund if you cancel prior to trip departure.



# CERTIFICATE OF LIABILITY INSURANCE

DATE  
12/22/2025

THIS CERTIFICATE IS ISSUED AS A MATTER OF INFORMATION ONLY AND CONFERS NO RIGHTS UPON THE CERTIFICATE HOLDER. THIS CERTIFICATE DOES NOT AFFIRMATIVELY OR NEGATIVELY AMEND, EXTEND OR ALTER THE COVERAGE AFFORDED BY THE POLICIES BELOW. THIS CERTIFICATE OF INSURANCE DOES NOT CONSTITUTE A CONTRACT BETWEEN THE ISSUING INSURER(S), AUTHORIZED REPRESENTATIVE OR PRODUCER, AND THE CERTIFICATE HOLDER.

**IMPORTANT:** If the certificate holder is an ADDITIONAL INSURED, the policy(ies) must be endorsed. If SUBROGATION IS WAIVED, subject to the terms and conditions of the policy, certain policies may require an endorsement. A statement on this certificate does not confer rights to the certificate holder in lieu of such endorsement(s).


<b>PRODUCER</b> Affinity Insurance Services Aon Affinity Travel Practice 45 Executive Drive, Suite 100 Plainview, NY 11803	<b>CONTACT NAME:</b> Kenneth Whitman	
	<b>PHONE (A/C, No. Ext):</b> 1-(800) 803-1213	<b>FAX (A/C, No.):</b> (516) 294-1821
<b>E-MAIL ADDRESS:</b> kenneth.whitman@aon.com		
<b>INSURER(S) AFFORDING COVERAGE</b>		<b>NAIC #</b>
<b>INSURED</b> School Tours of America, LLC 9600 Long Point, Suite 350 Houston, TX 77055	<b>INSURER A:</b> Arch Insurance Company (AIC)	
	<b>INSURER B:</b>	
	<b>INSURER C:</b>	
	<b>INSURER D:</b>	
	<b>INSURER E:</b>	
	<b>INSURER F:</b>	

COVERAGES	CERTIFICATE NUMBER	REVISION NUMBER
-----------	--------------------	-----------------

THIS IS TO CERTIFY THAT THE POLICIES OF INSURANCE LISTED BELOW HAVE BEEN ISSUED TO THE INSURED NAMED ABOVE FOR THE POLICY PERIOD INDICATED. NOTWITHSTANDING ANY REQUIREMENT, TERM OR CONDITION OF ANY CONTRACT OR OTHER DOCUMENT WITH RESPECT TO WHICH THIS CERTIFICATE MAY BE ISSUED OR MAY PERTAIN, THE INSURANCE AFFORDED BY THE POLICIES DESCRIBED HEREIN IS SUBJECT TO ALL THE TERMS, EXCLUSIONS AND CONDITIONS OF SUCH POLICIES. LIMITS SHOWN MAY HAVE BEEN REDUCED BY PAID CLAIMS.

INSR LTR	TYPE OF INSURANCE	ADDITIONAL INSURED	SUBROGATION	POLICY NUMBER	POLICY EFFECTIVE DATE	POLICY EXPIRATION DATE	LIMITS
A	<input checked="" type="checkbox"/> <b>COMMERCIAL GENERAL LIABILITY</b> <input type="checkbox"/> CLAIMS-MADE <input checked="" type="checkbox"/> OCCUR GEN'L AGGREGATE LIMIT APPLIES PER: <input checked="" type="checkbox"/> POLICY <input type="checkbox"/> PROJECT <input type="checkbox"/> LOC			TAP0197126-04	12/31/2025	12/31/2026	EACH OCCURRENCE \$5,000,000 DAMAGE TO RENTED PREMISES (Each Occurrence) \$50,000 MED EXP (Any one person) \$10,000 PERSONAL & ADV INJURY \$5,000,000 GENERAL AGGREGATE \$5,000,000 PRODUCTS & COMPLETED OPERATIONS
A	<b>AUTOMOBILE LIABILITY</b> <input type="checkbox"/> ANY AUTO <input type="checkbox"/> ALL OWNED AUTOS <input type="checkbox"/> SCHEDULED AUTOS <input checked="" type="checkbox"/> HIRED AUTOS <input checked="" type="checkbox"/> NON-OWNED AUTOS			TAP0197126-04	12/31/2025	12/31/2026	COMBINED SINGLE LIMIT (Each accident) \$5,000,000 BODILY INJURY (Per person) BODILY INJURY (Per occurrence) PROPERTY DAMAGE (Per occurrence)
	<b>UMBRELLA LIAB</b> <input type="checkbox"/> OCCUR <input type="checkbox"/> CLAIMS-MADE <b>EXCESS LIAB</b> <input type="checkbox"/> RETENTION	N/A					EACH OCCURRENCE AGGREGATE
	<b>WORKERS COMPENSATION AND EMPLOYERS' LIABILITY</b> ANY PROPRIETOR/PARTNER/EXECUTIVE OFFICER/MEMBER EXCLUDED? (Mandatory in NH) If yes, describe under DESCRIPTION OF OPERATIONS below. Y/N <input type="checkbox"/>	N/A					<input type="checkbox"/> PER STATUTE <input type="checkbox"/> OTHER E.L. EACH ACCIDENT E.L. DISEASE - EA EMPLOYEE E.L. DISEASE - POLICY LIMIT
A	<b>ERRORS &amp; OMISSIONS/PROFESSIONAL LIABILITY</b>			TAP0197126-04	12/31/2025	12/31/2026	EACH NEGLIGENT ACT OR NEGLIGENT OMISSION \$5,000,000
A	<b>SEXUAL ABUSE AND MOLESTATION LIABILITY</b>			TAP0197126-04	12/31/2025	12/31/2026	EACH OCCURRENCE/AGGREGATE \$2,000,000

DESCRIPTION OF OPERATIONS / LOCATIONS / VEHICLES (ACORD 101, Additional Remarks Schedule, may be attached if more space is required)

<b>CERTIFICATE HOLDER</b> Proof of Coverage	<b>CANCELLATION</b> SHOULD ANY OF THE ABOVE DESCRIBED POLICIES BE CANCELLED BEFORE THE EXPIRATION DATE THEREOF, NOTICE WILL BE DELIVERED IN ACCORDANCE WITH THE POLICY PROVISIONS. AUTHORIZED REPRESENTATIVE 
--	---

© 1988-2015 ACORD CORPORATION. All rights reserved.