

Health & Wellness Clinic

Denton ISD Benefits & Risk
Management



Exchange Summary

Denton ISD, Denton Independent School District
January 27, 2023

As we explore how to best develop a Wellness Center, what would be most important to you to be provided by this center?



PARTICIPATION

Breakdown of Participation



743
Participants



642
Thoughts



12,405
Ratings

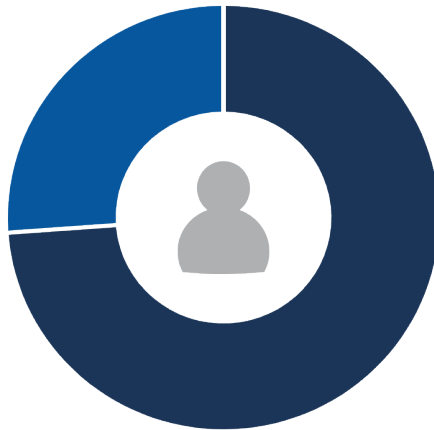


PARTICIPATION

Breakdown of Participation



Do you currently utilize one of the Denton ISD Insurance plans?



%		Answer
74%	(529)	 Yes
26%	(187)	 No

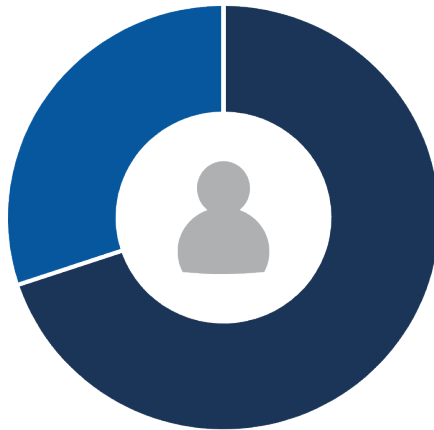


PARTICIPATION

Breakdown of Participation



Do you currently have a primary care physician?



%		Answer
70%	(499)	 Yes
30%	(215)	 No




PARTICIPATION

Breakdown of Participation



What do you currently consider the greatest obstacle about going to a primary care physician, pediatrician or urgent care facility ?



%		Answer
34%	(242)	■ Cost of Visit
12%	(82)	■ Unable to locate practice accepting new patients
* %	(262)	■ Lack of time
17%	(121)	■ None of the above



WORDCLOUD
Top Rated



employees
health services find
center care appointments mental
convenient availability take providers
hard quality cost pay
denton ease visit + hours time
district schedule day affordable
na
insurance easy sick low work family
even expensive plan location
important doctor access
healthcare

Take Aways

Value Expression

Time

Availability of appointments

Affordability - Expense

Doctor Access

Insight

Loss of classroom educational time

Absences due to appointments

Reduction in use of substitutes

Scheduling around class time

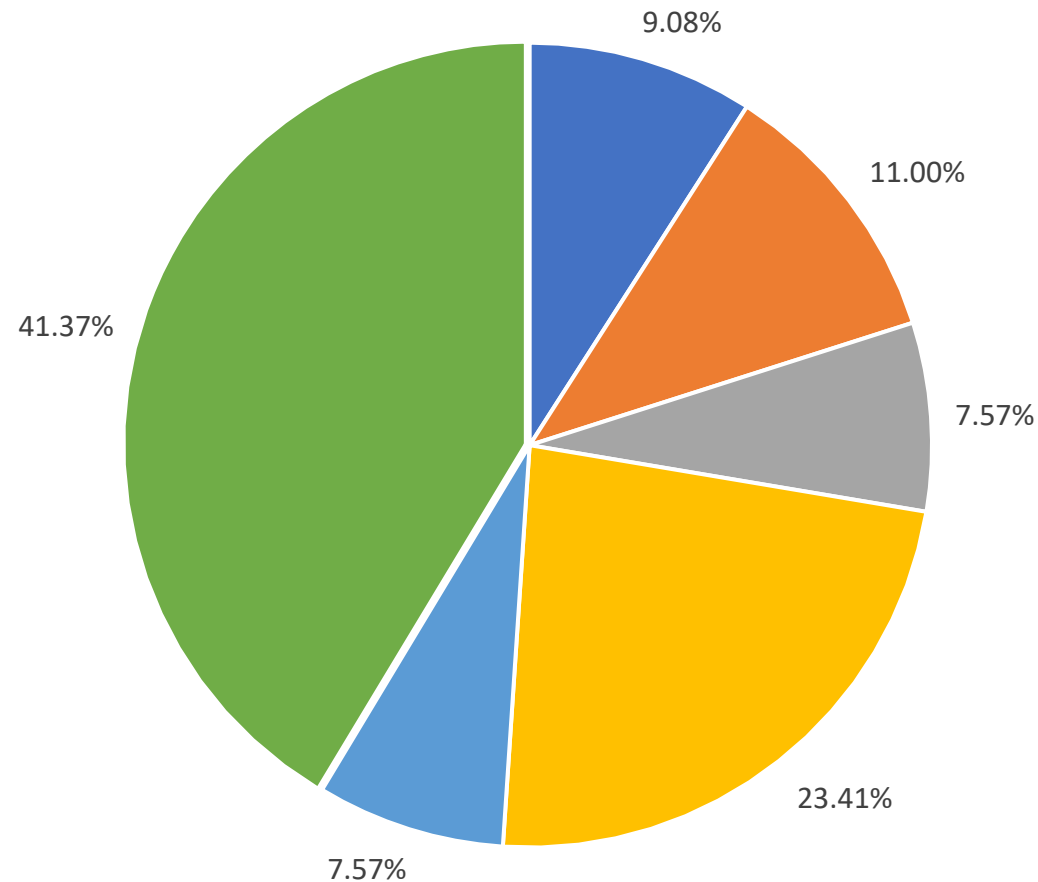
Use of Concentra App to schedule visits

Planned Hours of Operation

Day	Monday	Tuesday	Wednesday	Thursday	Friday
Time	7am-5pm	8am-5pm	8am-5pm	8am-5pm	8am-4pm

Daily times are a negotiated aspect.

Funding



Medical Insurance Breakdown

PPO	no charge
HD	\$30.00
No Insurance with District	\$30.00
No Insurance	\$30.00

Daily Utilization

Each Exam room has the potential to see 14 people per day.

Initial build out up to 5 exam rooms with the potential of seeing 70 people a day.

Districts With Clinic Offerings

Allen ISD

Eagle Mtn Saginaw ISD

Frisco ISD

Garland ISD

Irving ISD

Keller ISD

Mesquite ISD

Northwest ISD- Closed, moved to TRS-ActiveCare. Facility now operated by THR and op

Clinic Offering

<p>Occupational Health</p> <ul style="list-style-type: none"> • Work-related injury/illness treatment - provider • Work-related injury/illness assessment - non-provider • Examinations and management <ul style="list-style-type: none"> ◦ DOT Physical • Clinical testing <ul style="list-style-type: none"> ◦ Audiograms ◦ Tb testing ◦ Vision/Titmus • Drug and alcohol testing/collections • Laboratory collections • Injections • Medication – prescribe and/or dispense OTC only 	<p>Acute Episodic (Urgent) Care</p> <ul style="list-style-type: none"> • Upper respiratory infections • Headache • Sore throat • Non-work-related sprains/strains • Lacerations • Gastrointestinal issues/urinary tract infections • Skin irritation/rash <p>Primary Care</p> <ul style="list-style-type: none"> • Chronic disease management • Preventive care • Lifestyle medicine • Routine gender/age-specific exams and screenings • Laboratory collections • Immunizations • Medication management
<p>Health Improvement/Wellness Services</p> <ul style="list-style-type: none"> • Biometric screens • Health risk assessments • Health fairs • Health education (monthly) 	<p>Pharmacy- OTC only</p>
<p>Ancillary Services:</p> <ul style="list-style-type: none"> • Behavioral health services 	<p>Costs for Labs and OTC included in monthly fees.</p>

Behavioral Health

Services provided:

- Patient Health Questionnaire
- Behavioral Health Screen, Depressive Disorder
- Employee Assistance Program (EAP) guidance

Behavioral Health

PATIENT HEALTH QUESTIONNAIRE (PHQ-9)

ID #: _____ DATE: _____

Over the last 2 weeks, how often have you been bothered by any of the following problems?
(use "✓" to indicate your answer)

	Not at all	Several days	More than half the days	Nearly every day
1. Little interest or pleasure in doing things	0	1	2	3
2. Feeling down, depressed, or hopeless	0	1	2	3
3. Trouble falling or staying asleep, or sleeping too much	0	1	2	3
4. Feeling tired or having little energy	0	1	2	3
5. Poor appetite or overeating	0	1	2	3
6. Feeling bad about yourself—or that you are a failure or have let yourself or your family down	0	1	2	3

PHQ-2

Over the past two weeks, how often have you been bothered by any of the following problems?

Little interest or pleasure in doing things.

0 = Not at all

1 = Several days

2 = More than half the days

3 = Nearly every day

Feeling down, depressed, or hopeless.

0 = Not at all

1 = Several days

2 = More than half the days

3 = Nearly every day

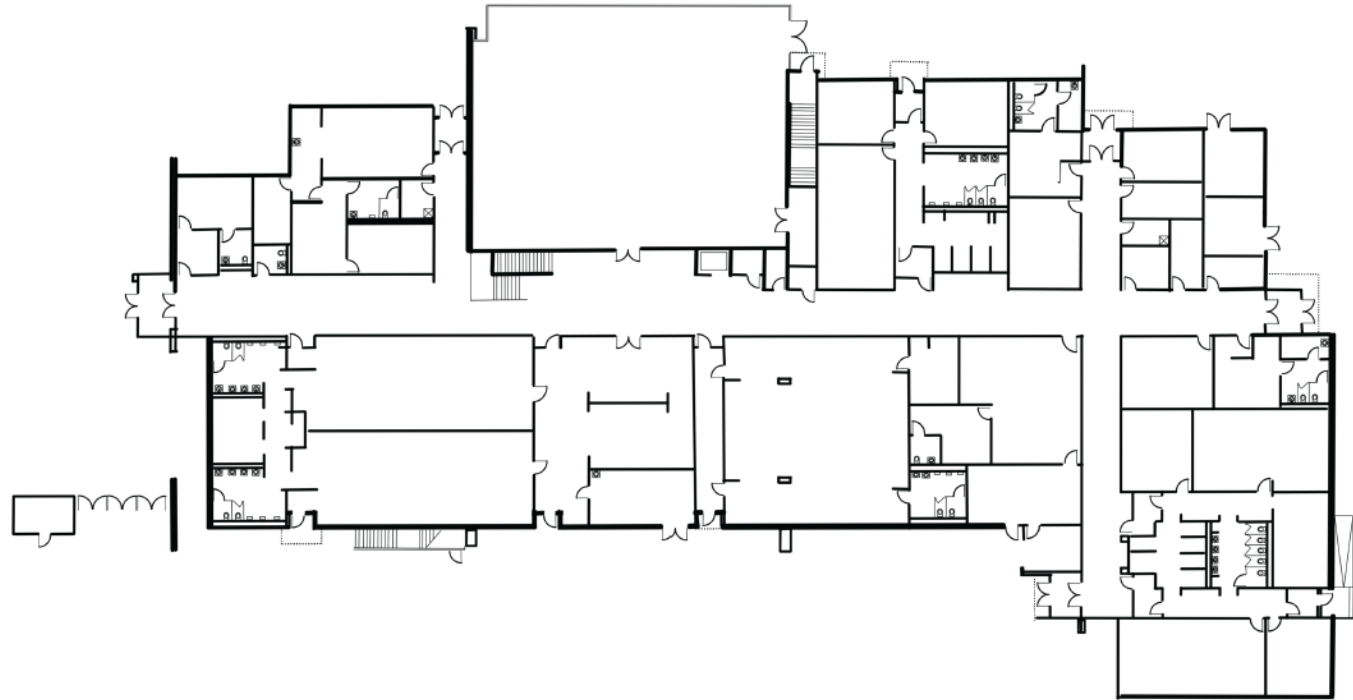
Total point score: _____

Score interpretation:

PHQ-2 score	Probability of major depressive disorder (%)	Probability of any depressive disorder (%)
1	15.4	36.9
2	21.1	48.3
3	38.4	75.0
4	45.5	81.2
5	56.4	84.6
6	78.6	92.9

Location

- Old Denton HS Athletic Complex



Measuring Success

First Year Success

- ☐ Education of staff on clinic/healthcare offering
- ☐ Culture shift in healthcare
- ☐ Utilization meets expectation
- ☐ Financial goals met

Indirect Impact

- ☐ Retention improves in all employee groups
(Teachers, Paraprofessionals, Auxiliary, Support Staff)
- ☐ Attendance of teaching professionals
- ☐ School Nursing impacted by employee health improvement
- ☐ Mental Health of staff improvement
- ☐ Culture within Denton ISD improves

Long Term Success

- ☐ Well informed employees
- ☐ Benefit is utilized (staff, spouse and dependents)
- ☐ Healthy Employee Pool
- ☐ Financial goals
 - ☐ funding exceeds expenditures and indirect costs
 - ☐ fund balance to expand staffing options or services
 - ☐ expansion into 380 corridor
 - ☐ insurance cost improves for employees