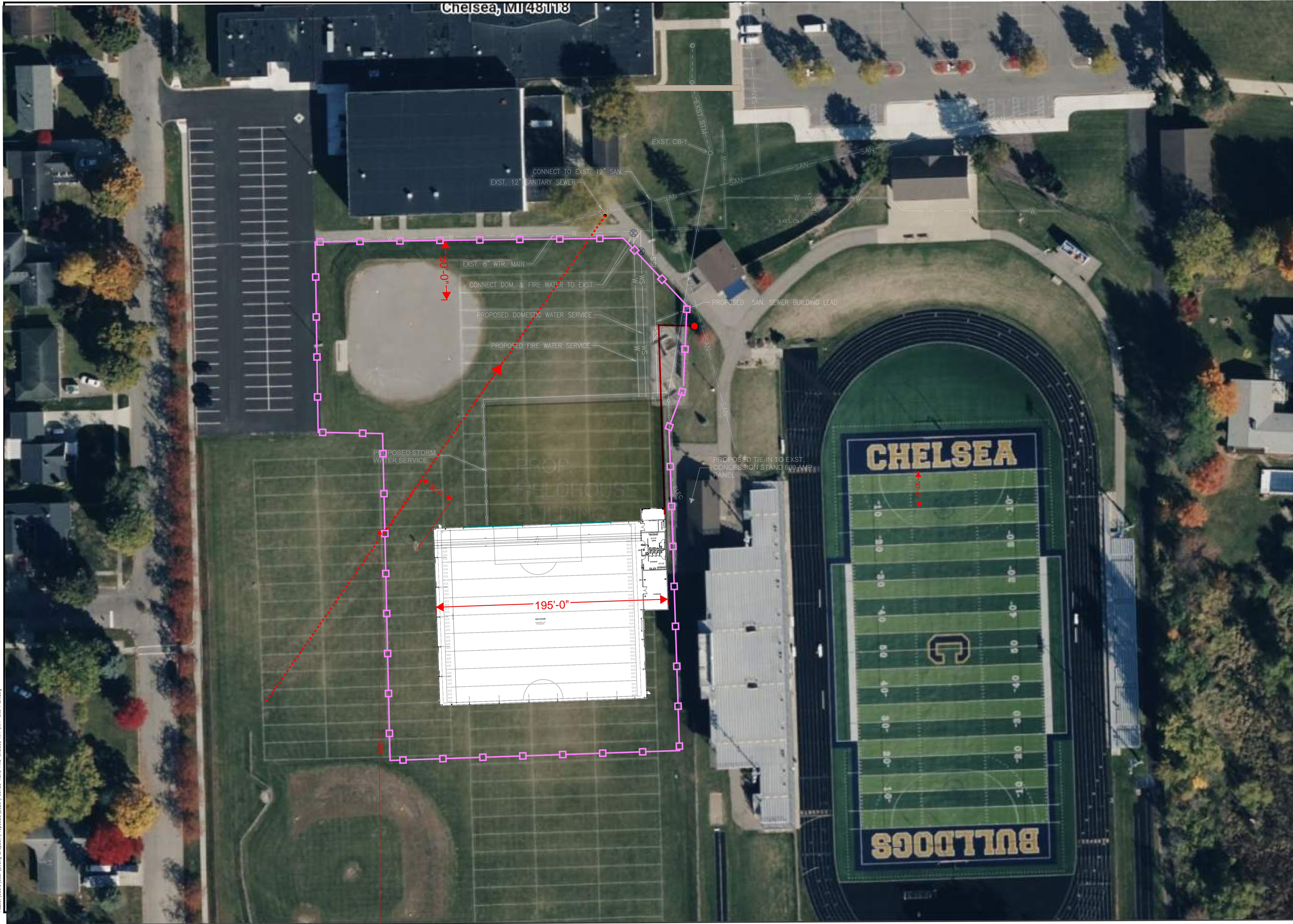


FILE:C:\Users\jwang\Desktop\Process\2026\03\03723 Road File Chelsea BFP\BFP_Site Plan.dwg

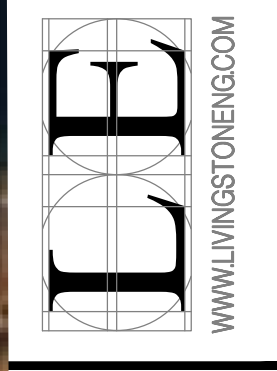
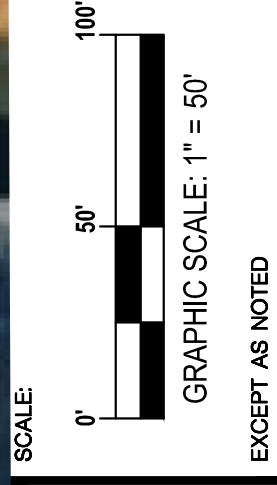


C30

NO.	P03723
DATE	
APPROVED:	
CHECKED:	
DRAWN:	TZ

Chelsea Athletic Fieldhouse
 Chelsea School District
 RFP SITE PLAN

CLIENT
RAND CONSTRUCTION



LIVINGSTON ENGINEERING
 CIVIL ENGINEERING SURVEYING PLANNING
 3300 S. OLD U.S. 23, BRIGHTON, MI 48114
 PHONE: (810) 225-7000 FAX: (810) 225-7699
 WWW.LIVINGSTONENG.COM