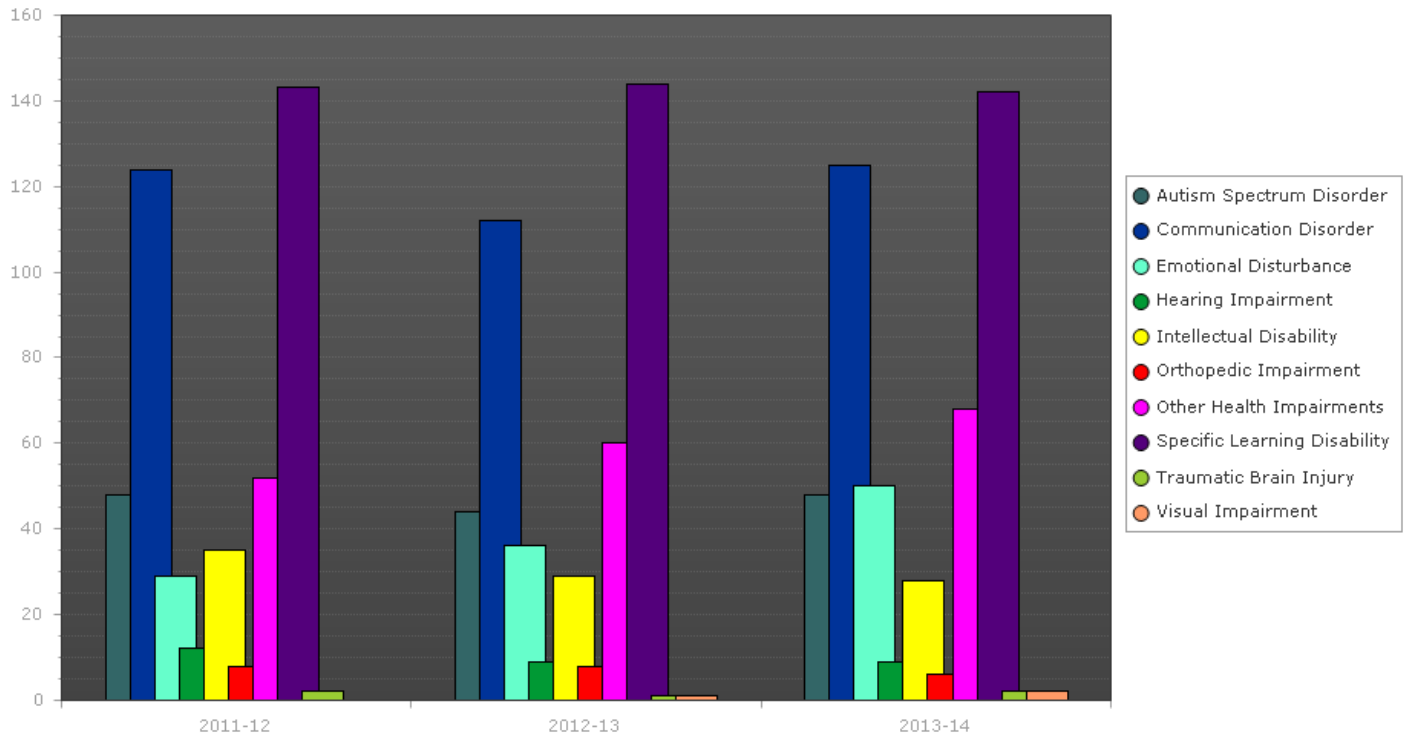


Primary Disability Verification



Primary Disability	2011-12	2012-13	2013-14	2011-12%	2012-13%	2013-14%
Autism Spectrum Disorder	48	44	48	10.60%	9.91%	10.00%
Communication Disorder	124	112	125	27.37%	25.23%	26.04%
Emotional Disturbance	29	36	50	6.40%	8.11%	10.42%
Hearing Impairment	12	9	9	2.65%	2.03%	1.88%
Intellectual Disability	35	29	28	7.73%	6.53%	5.83%
Orthopedic Impairment	8	8	6	1.77%	1.80%	1.25%
Other Health Impairments	52	60	68	11.48%	13.51%	14.17%
Specific Learning Disability	143	144	142	31.57%	32.43%	29.58%
Traumatic Brain Injury	2	1	2	0.44%	0.23%	0.42%
Visual Impairment	0	1	2	0.00%	0.23%	0.42%
Total	453	444	480	100.00%	100.00%	100.00%