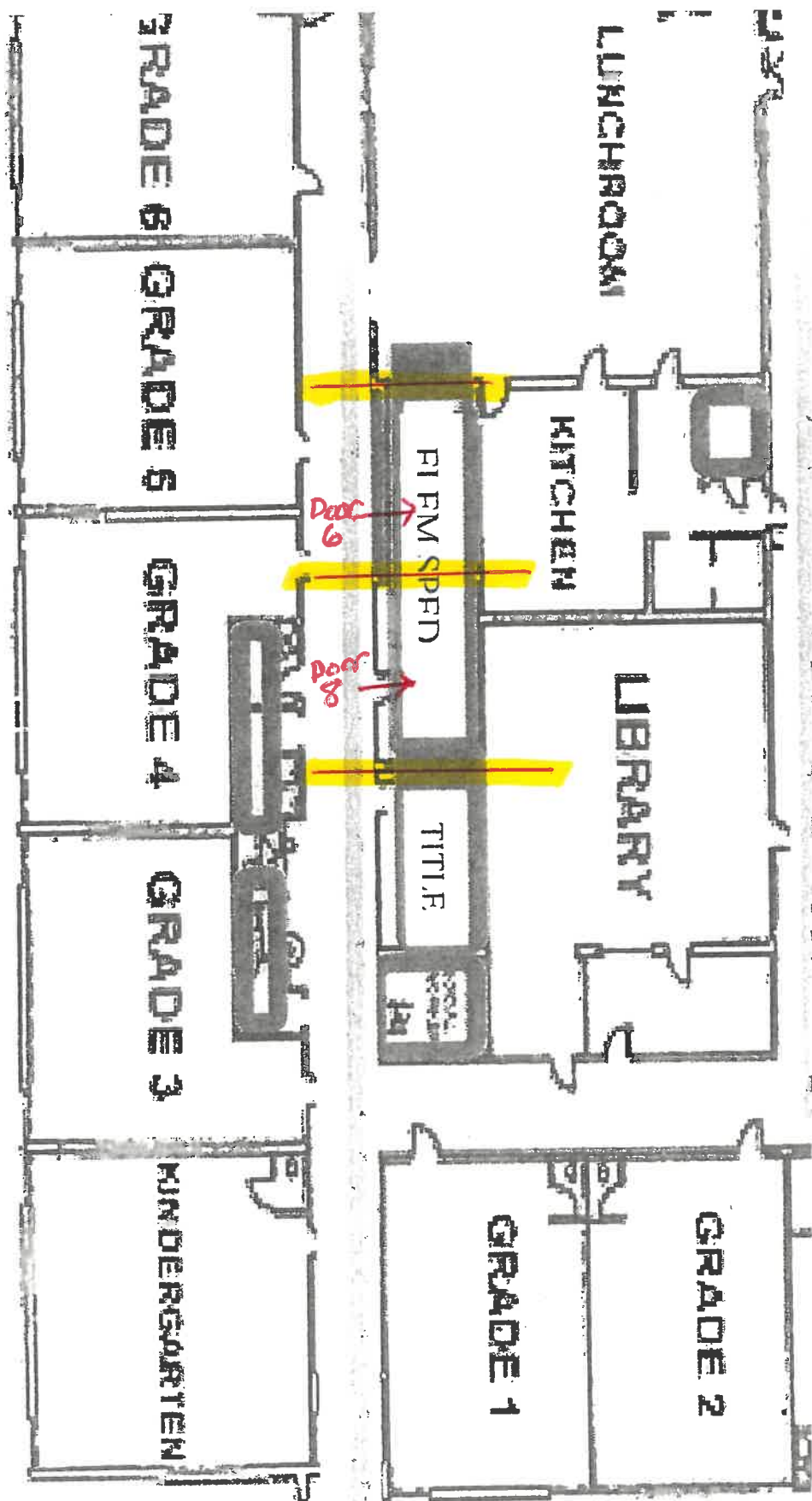


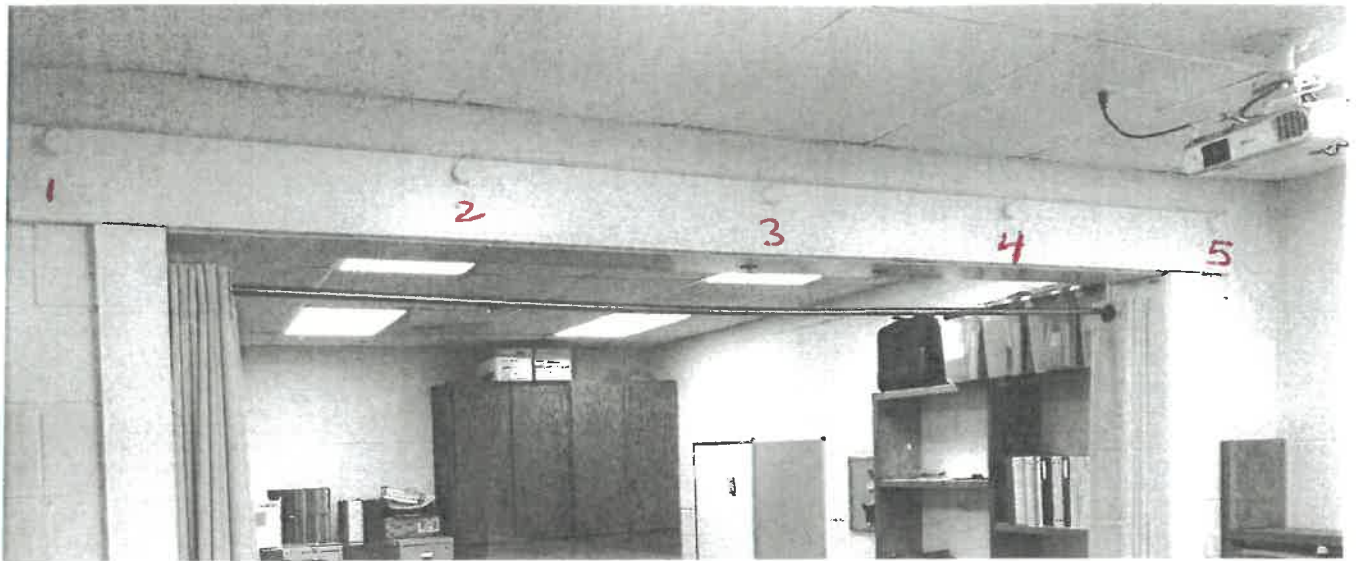
BADGER SCHOOL



Explore
framing/sheetrocking
a sound-reducing
closure to
create a separate
space?

Subject: Opening in wall between Door 6 and Door 8

To: Kevin Ricke <kricke@badger.k12.mn.us>



5 1/2-inch diameter anchor bolts - welded solid

Iron steel beams/plates

Opening must be through a load-bearing structure wall