





Capacity/Utilization Summary

Methodology Example

Total Learning Stations	= 10	}	Elementary Schools
<u>Students per Learning Station</u>	= 24		
Subtotal Student Capacity	= 240		
<u>Current Efficiency Factor</u>	= 75%	}	Secondary Schools
Total Student Capacity	= 180		
Current Enrollment	= 150		

Elementary Schools Classroom Size

Optimal:
900 SF

Ide/PV:
890 SF – 910 SF

Current Utilization:
25 students per
classroom

Instructional Capacity:
900 SF/35 ASF =
25 students per
classroom

Secondary Schools Classroom Size

Optimal:
900 SF

Lakeview:
710 SF – 880 SF

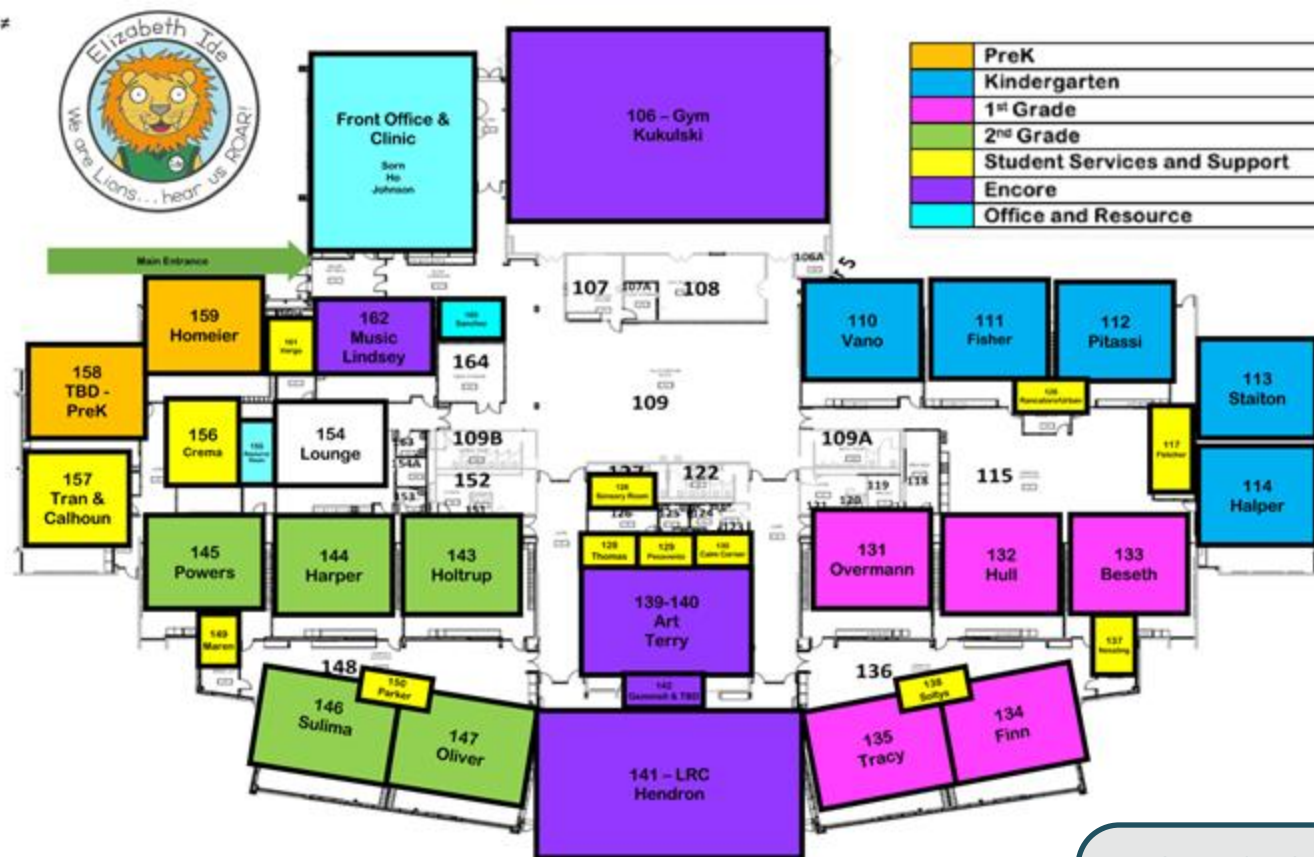
Current Utilization:
30 students per
classroom

Instructional Capacity:
710 - 880 SF/35 ASF =
20 - 25 students per
classroom



Capacity/Utilization Summary

Ide Elementary School



INSTRUCTIONAL CAPACITY:

Total Learning Stations	= 15
<u>Students per Learning Station</u>	= 24
Total Student Capacity	= 360

CURRENT ENROLLMENT = 355

Assumes every classroom is at max. capacity

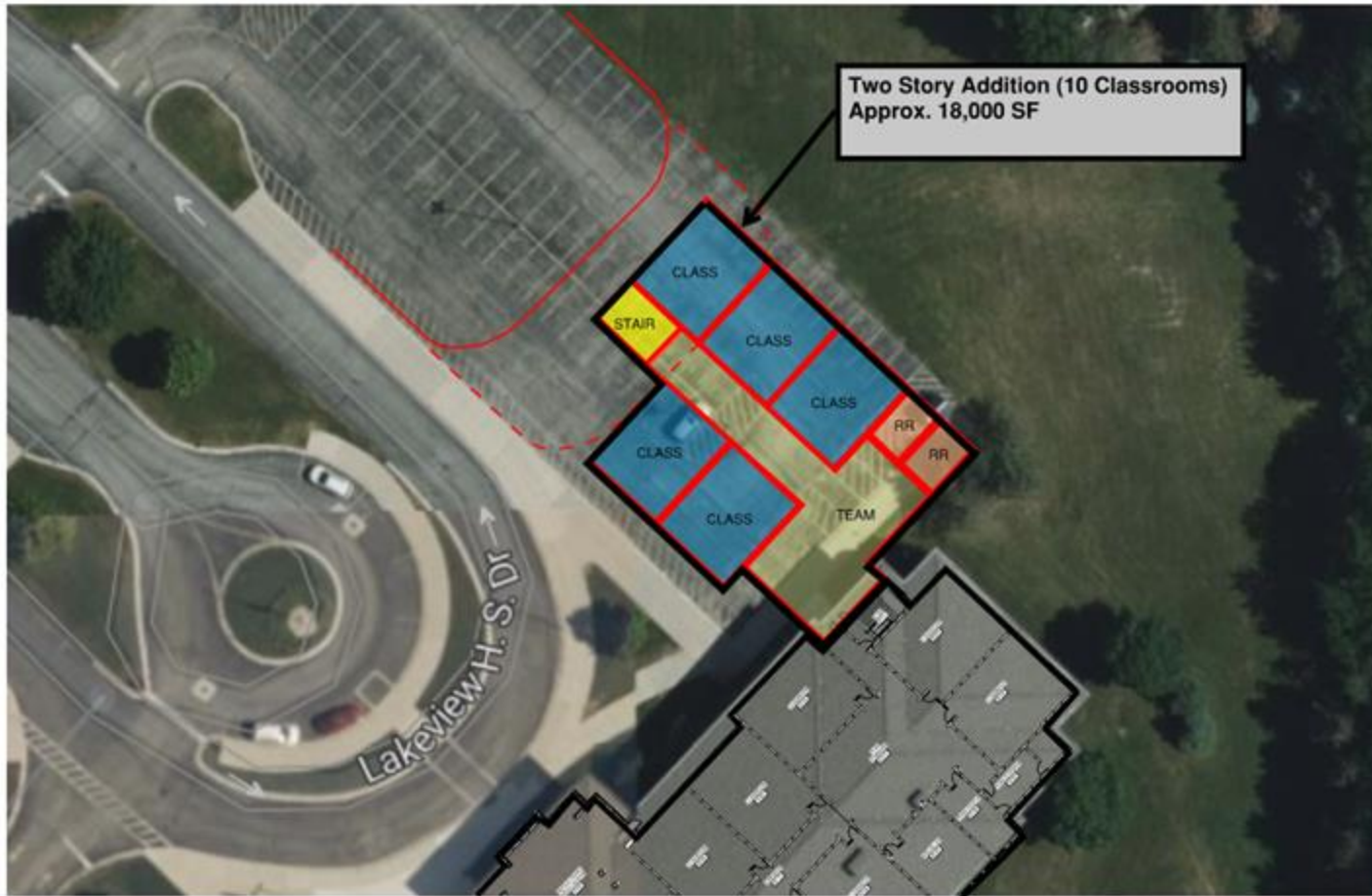


Assumes every classroom is at max. capacity



Potential Expansion

Prairieview Elementary School



Added Learning Stations = 10

Students per Learning Station = 24

Additional Student Capacity = 240

Assumes all added classrooms are general learning stations. Also assumes core spaces (gym, cafeteria) and specials (art, music) can accommodate the added students.



Assumes every classroom is at max. capacity



Capacity/Utilization Summary

Lakeview Junior High School



Assumes every classroom is at max. capacity

CURRENT UTILIZATION:

Total Learning Stations	= 25
<u>Students per Learning Station</u>	= 30
Subtotal Student Capacity	= 750

<u>Current Efficiency Factor</u>	= 75%
Resulting Student Capacity	= 562

INSTRUCTIONAL CAPACITY:

Classrooms (12 @ 720 SF)	= 240
Classrooms (3 @ 880 SF)	= 75
<u>Specials/Labs/Gyms (10 tot)</u>	= 300
Subtotal Student Capacity	= 615

<u>Current Efficiency Factor</u>	= 75%
Total Student Capacity	= 461

SUPPORTED INSTRUCTIONAL CAPACITY:

Classrooms (8 @ 720 SF)	= 160
Classrooms (2 @ 880 SF)	= 50
<u>Specials/Labs/Gyms (10 tot)</u>	= 300
Subtotal Student Capacity	= 510

<u>Current Efficiency Factor</u>	= 75%
Total Student Capacity	= 382

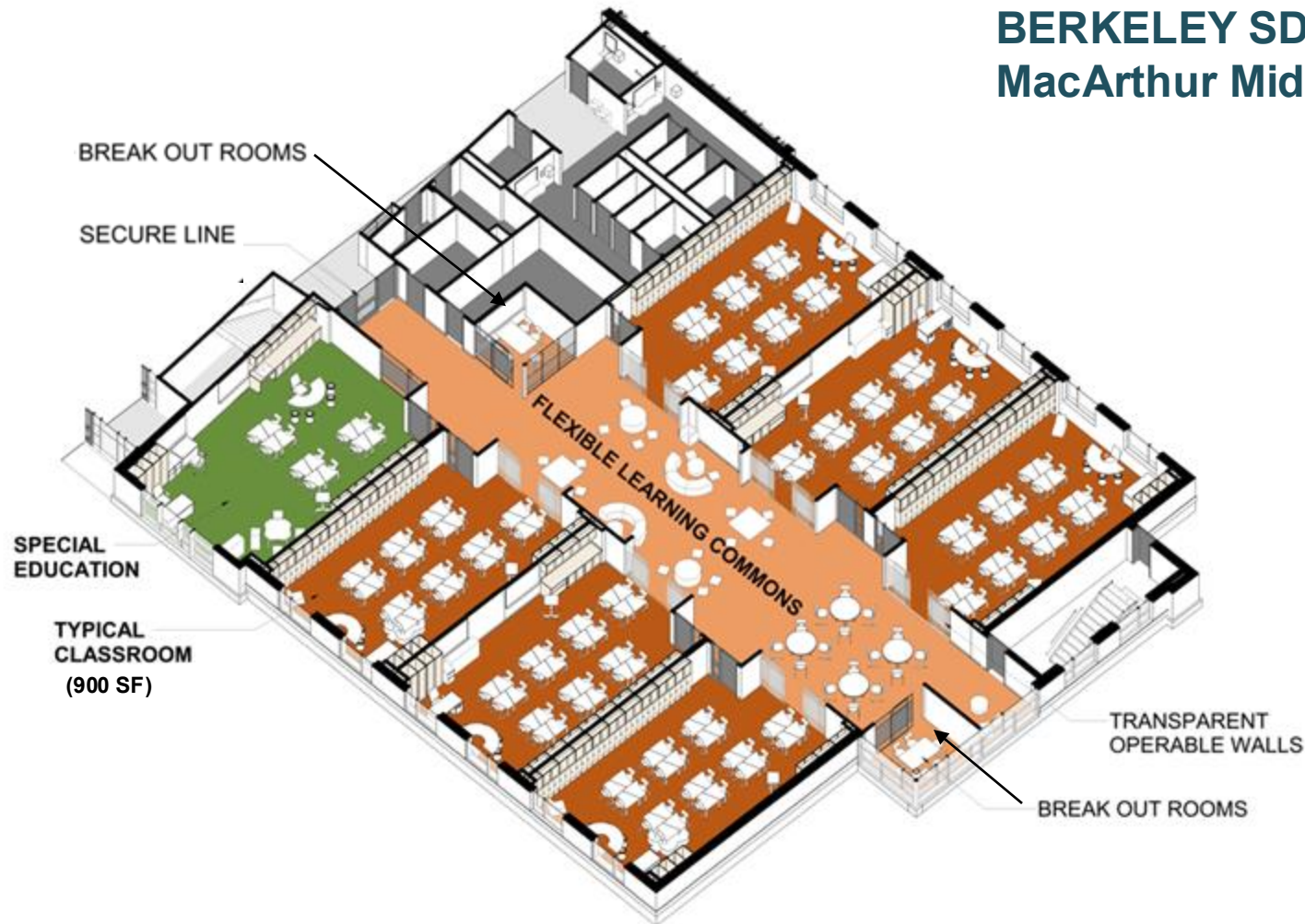
CURRENT ENROLLMENT	= 350
--------------------	-------



Capacity/Utilization Summary

Example: Recent Middle School

**BERKELEY SD 87
MacArthur Middle School**





Center Cass School District #66 CAPACITY OVERVIEW 6/18/2025



QUESTIONS



Potential Expansion

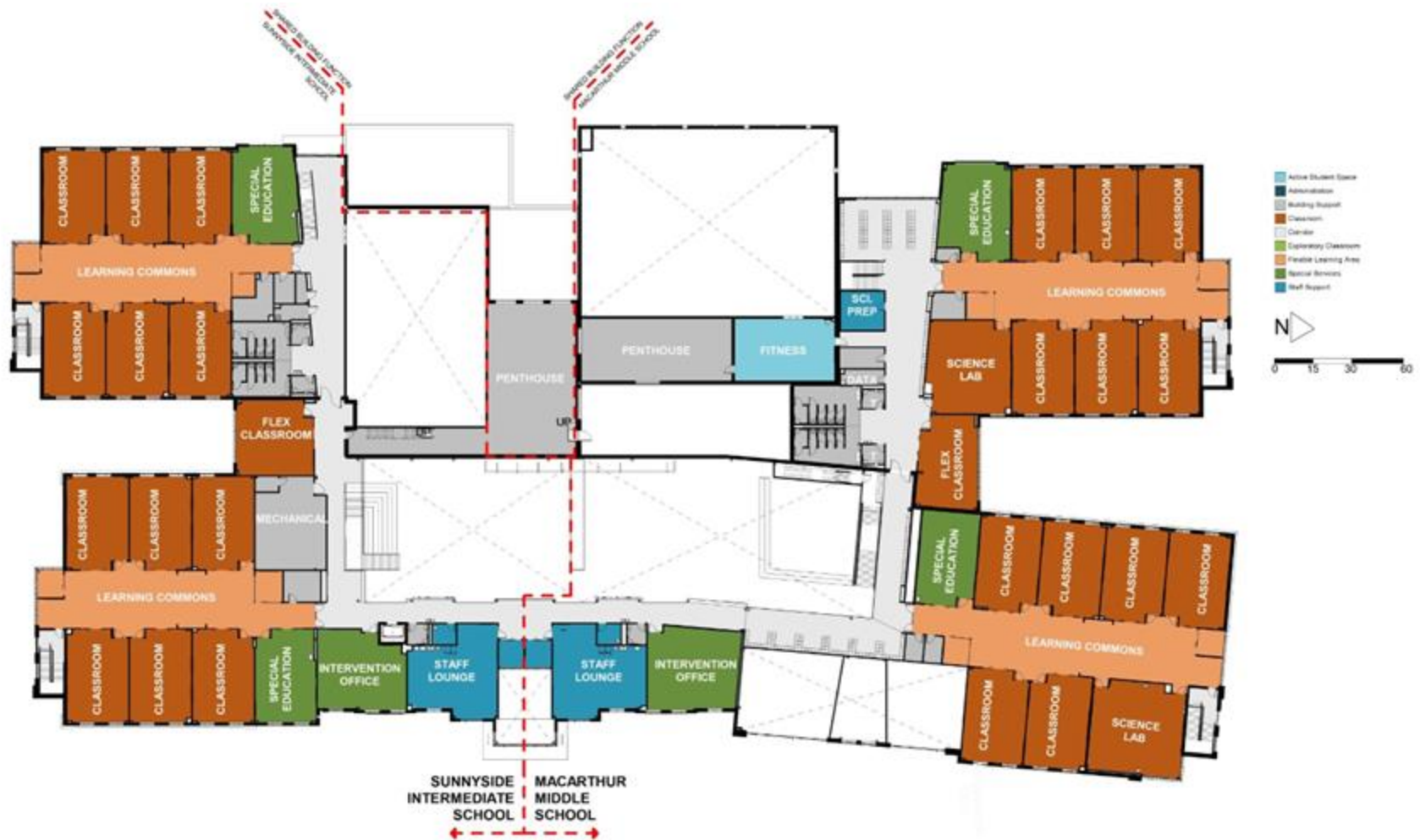
Lakeview Junior High School





Capacity/Utilization Summary

Example: Recent Middle School



BERKELEY SD 87
MacArthur Middle School