



ROSEVILLE AREA SCHOOLS

Achievement & Integration Plan Progress Report

November 25, 2025



Roseville Area Schools

MISSION

Excellence, Innovation & Equity in All We Do

Each learner experiences a sense of belonging and a joy of learning, is inspired and prepared to reach their potential, and contributes to our communities.

EQUITY VISION

Roseville Area Schools is committed to ensuring an equitable and respectful learning environment for every student, family, and staff member regardless of race, gender, gender identity, sexual orientation, socioeconomic status, ability, home or first language, religion, national origin, age, and physical appearance.

VISION

GOALS & KEY STRATEGIES

#1

Our graduates are prepared to achieve their goals and aspirations.

- Ensure students are college- and career-ready
- Deliver a challenging, joyful, and safe learning environment
- Deliver innovative, effective practices and systems

#2

Our learners contribute to an equitable, caring society.

- Cultivate student engagement and joy in learning
- Support learner resiliency (student social and emotional learning and mental health)
- Amplify student leadership and voice in decision-making
- Prepare learners to be racially and socially responsive

#3

We are a culturally responsive, inclusive, anti-racist district.

- Ensure educator commitment to anti-racist practices
- Hire and retain a diverse workforce
- Develop equitable leaders
- Develop a culturally responsive evaluation system
- Build a culture of belonging where all feel welcome, included, and safe

#4

The community is united behind meeting student needs.

- Partner with families and the community to support student success
- Build a culture of belonging

#5

We are financially secure.

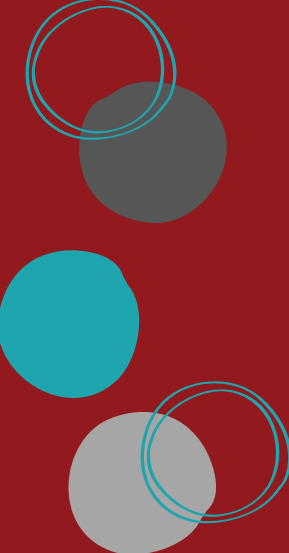
- Cultivate and maintain community trust
- Secure and allocate financial resources to support the district's mission and vision

Achievement & Integration Plan

July 1, 2023 – June 30, 2026

The Achievement and Integration (A&I) for Minnesota program supports the pursuit of racial and economic integration, increased student achievement, the creation of equitable educational opportunities, and the reduction of academic disparities based on students' diverse racial, ethnic, and economic backgrounds in Minnesota public schools.





Achievement and Integration Plans must contain three types of goals, at least one for each of the following:

- Reducing the disparities in academic achievement among all students and specific categories of students excluding the categories of gender, disability, and English learners
- Reducing the disparities in equitable access to effective and more diverse teachers among all students and specific categories of students excluding the categories of gender, disability, and English learners
- Increasing racial and economic integration

Achievement & Integration Plan

July 1, 2023 – June 30, 2026

Goal #1

Increase the overall reading proficiency rate for BIPOC students in grades 3-6, from 37.4% in 2022 to 53.2% in 2026, as measured by the MCA-III reading test

Progress Update

2025 proficiency rate: 29.0%

2024: 31.0%

Achievement & Integration Plan

July 1, 2023 – June 30, 2026

Goal #2

**Decrease the flat growth
of Native American students
in grades 2-6, on FAST
Reading test from 38% in
2022 to 29% in 2026**

Progress Update

2025 flat growth: 19%

2024: 17%

Achievement & Integration Plan

July 1, 2023 – June 30, 2026

Goal #3

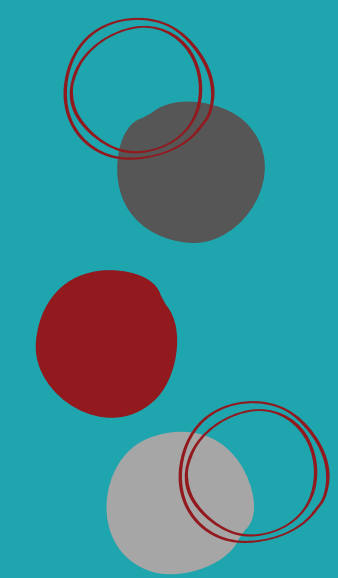
**Increase students' access
to the number of racially
and ethnically diverse
teachers from 12% in 2023
to 17% in 2026**

Progress Update

Teachers of color: 16.52%

2024: 15.17%

2023: 14.8%



Racially Identifiable Schools

Racially Identifiable Schools (RIS) are schools whose BIPOC student population is at least 20 percentage points higher than the district as a whole.

- **District: 63.3%**
- **Harambee: 82.0%**
- **Edgerton: 86.0%**

Achievement & Integration Plan

July 1, 2023 – June 30, 2026

RIS Goal #1

Decrease the overall average percentage of flat growth for BIPOC students in grades 2-6 (as measured by the FAST reading assessment) at Edgerton (from 16.5% to 8%) and Harambee (21% to 10%) by 2026

Progress Update

2025 Edgerton flat growth: 27%
(2024: 18%)

2025 Harambee flat growth: 31%
(2024: 22%)

Achievement & Integration Plan

July 1, 2023 – June 30, 2026

RIS Goal #2

Increase the enrollment at Edgerton Elementary from 450 students to 490 students, and Harambee Elementary from 270 students to 330 students by 2026

Progress Update

2025 Edgerton: 383

2024: 389

2025 Harambee: 257

2024: 265

Achievement & Integration Plan

July 1, 2023 – June 30, 2026

RIS Goal #3

Edgerton and Harambee students will self-report a 10% increase on the student survey, from 2023 baseline year data to 2026 data, in response to teacher equitable practices in their classrooms.

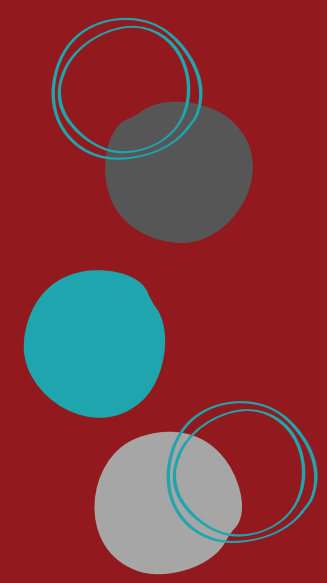
Progress Update

Social Emotional Learning and Equity Survey data for individual schools is still being generated.



Response & Efforts

- **Literacy as a social justice issue**
 - Equity Advancement Literacy Lead: Dr. Clarissa Jackson
 - Science of Reading Professional Development
 - LETRS Training for K-4 + 5-6
 - Careiall Training for 5-12
 - Intervention teachers
 - Year 3 of K-6 ELA Curriculum
- **AVID Elementary and AVID WICOR strategies**
 - 2024-2025: Prioritizing 5th and 6th grade
- **BIPOC Recruitment and Retention efforts**
- **AIPAC, Cultural Liaisons, ELAC, District Attendance Team**
- **Teacher Development and Evaluation**
 - New rubric
 - Professional Development



Questions?