

Targeted Improvement Plans

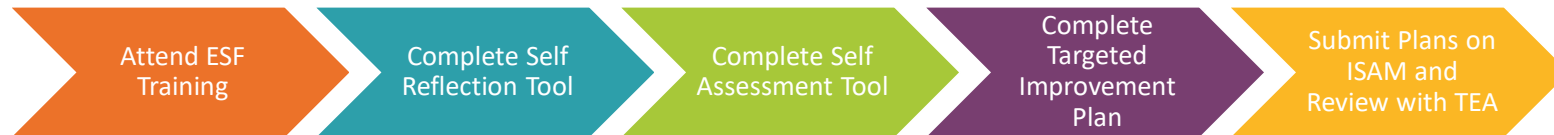
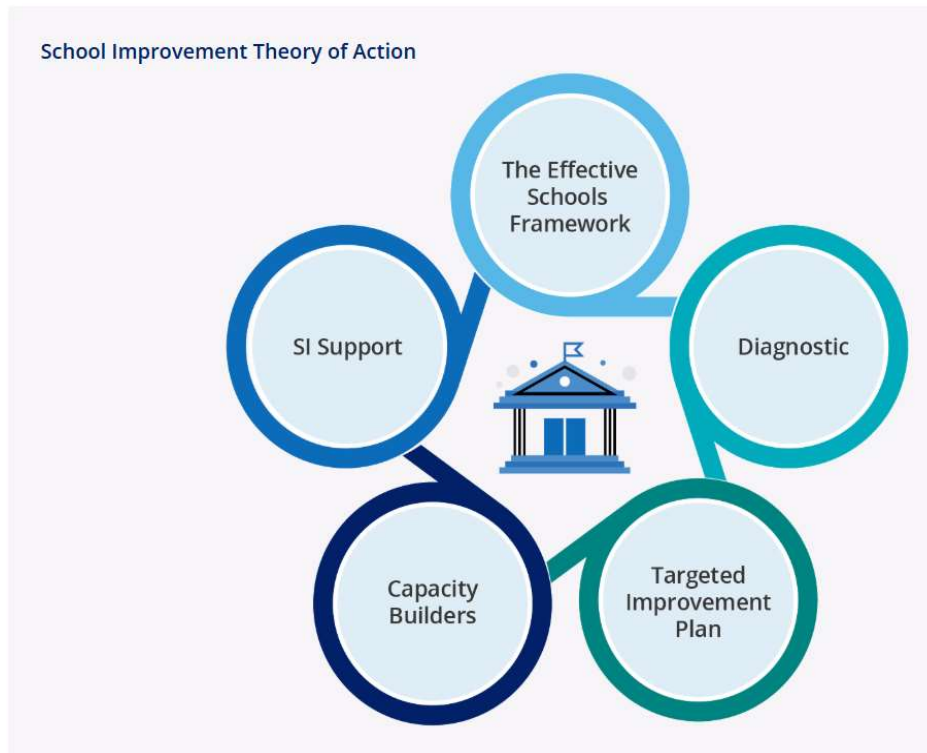


2024-2025

- **Bottom Five Percent:** Title I campuses are ranked based on their Closing the Gaps scaled scores. Those in the bottom five percent for their school type (elementary, middle, high school/K–12, and alternative education) are identified for CSI.
- **Graduation Rate:** Any campus, whether Title I or non-Title I, with a six-year federal graduation rate below 66.7% for all students is identified for CSI.
- **Consistently Underperforming Student Groups:** Schools with specific student groups that consistently underperform may also be identified for CSI.

Targeted Improvement Planning Process

- Completed: Effective Schools Framework Training at Region 18
- Completed: Self Reflection Tool
- Completed: Targeted Improvement Plan (TIP)
- Pending: Board approval of TIPs
- Pending: Submit Plans on the Intervention, Stage, and Activity Manager (ISAM) to TEA
- Pending: 90 Day Cycle Review with TEA



Source: www.TexasESF.org Copyright © 2022. Texas Education Agency. All Rights Reserved

Targeted Improvement Plans



Dowling Elementary
Principal Julie
Marshall



Burnet Elementary
Principal Regina
Lee



E.K. Downing Elementary
Principal Dr. Angelina
Hilton



Gonzales Elementary
Principal Adonica
Galindo



G E "Buddy" West
Elementary
Principal Nora
Gonzalez

Effective Schools Framework

5 Essential Levers

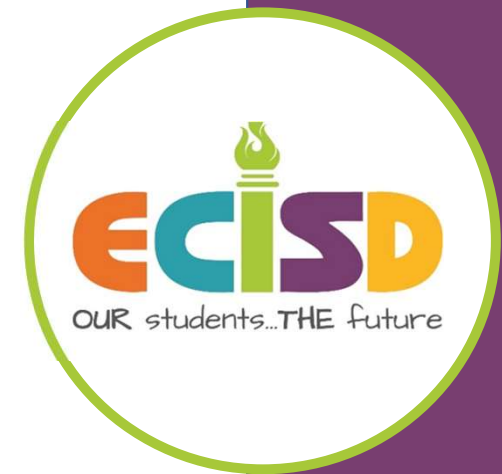
Lever 1: Strong School Leadership and Planning

Lever 2: Strategic Staffing

Lever 3: Positive School Culture

Lever 4: High-Quality Instructional Materials and Assessments

Lever 5: Effective Instruction



Next Steps

- Board approval of Targeted Improvement Plans.
- Continue 90-day cycle reviews of TIP plans and artifacts.
- Use artifacts and data collected from each cycle to determine the next 90-day action steps.
- Monitor student data for progress.

Public Hearing

