



KISD Technology Department

Cybersecurity Update

January 16, 2023

Angela Corder

Cybersecurity Agenda

- Definition of Cybersecurity
- Requirements
- Prevention Methods
- K-12 Cybersecurity Initiative
- Recommendations from TEA
- CIPA Compliance and Campus Reporting Tools
- Devices Monitored and Supported by KISD
- Prevention Partners

Cybersecurity

- The practice of defending computers, servers, mobile devices, electronic systems, networks, and data from malicious attacks.



CQB Technology Resources

Cybersecurity Requirements

- Designate a Cybersecurity Coordinator
- Develop a Cybersecurity Plan
- Complete Yearly Cybersecurity Training
 - Cybersecurity Coordinator
 - Board Members
- Districts must report incidents to TEA



CQB Technology Resources

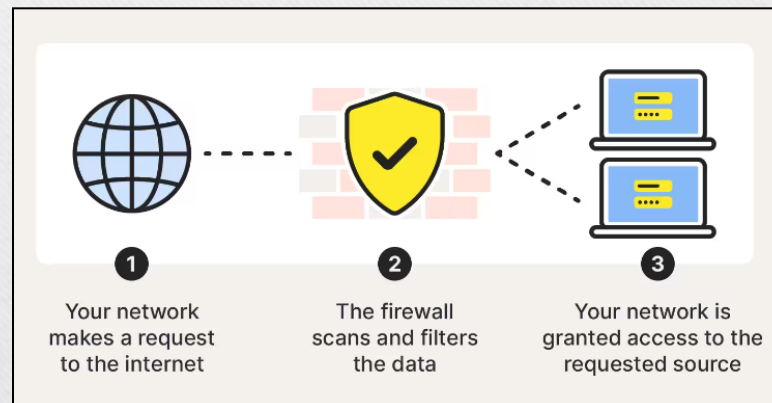
Cybersecurity Update 122

- CQB Technology Resources: Cybersecurity
 - Updated based on SB 271 which uses “security incident” rather than the term “breach of system security.”



Cybersecurity Prevention Methods

- **FILTERS & ANTIVIRUS** – All Internet traffic is filtered and monitored.
- **FIREWALL** – Network is protected from outside intruders.




Cybersecurity Prevention Methods

- INTERNET SERVICES BLOCKING
- DISASTER RECOVERY
- GEO-BLOCKING



Cybersecurity Prevention Methods

- **INTRUSION PROTECTION**
 - Monthly assessment and yearly penetration test.



We have just concluded monthly external vulnerability scans for Kaufman ISD for the month of January 2024.

We found no known critical vulnerabilities on your perimeter. Attached are the full results of the scan for information on medium and low vulnerabilities you may want to address.

Cybersecurity Prevention Methods

- **SIS is Cloud Hosted and Provides:**
 - Enhanced Security and Data Protection
 - Continuous Updates and Maintenance
 - Relieves the Burden for district



K-12 Cybersecurity Initiative

- Free Resources available to schools.
- Received licenses for Endpoint Detection and Response (EDR).



Highly Encouraged Recommendations from TEA



- Endpoint Detection and Response (EDR)
- Implement Multi-Factor Authentication (MFA)
- Restrict Admin Access
- Update Servers and Workstations.
- Segment Network

KISD is CIPA Compliant

Cybersecurity includes the Children's Internet Protection Act

- Internet traffic is monitored and filtered.
- Student created content is monitored.
- Searches for violence and mental health are monitored
- Students complete Internet Safety training on campus.



Campus Reporting Tools

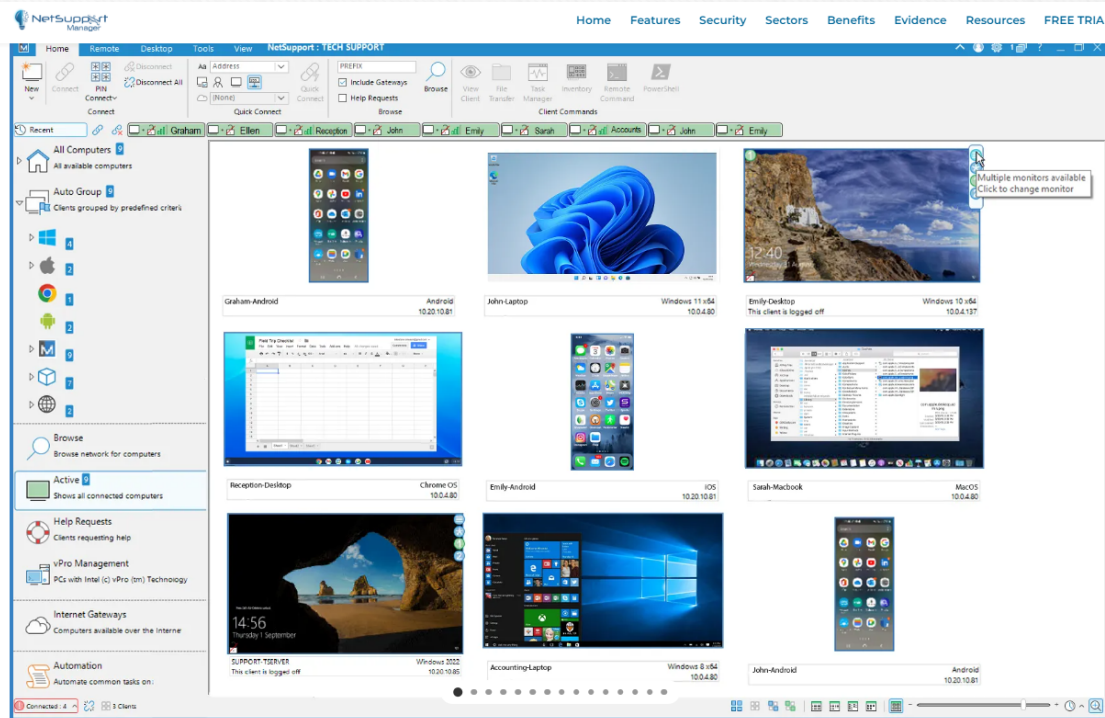
Chromebook Monitor Program

The screenshot displays the Relay Classroom interface, which is used for monitoring student activity. It is divided into three main sections:

- Left Panel (Classroom Management):** Shows the current class "American History" with options for "SEND LINK", "SCREEN LOCK", and "INTERNET ACCESS". Below this, there are status indicators for "Everyone": "WORKING - 11", "NEED HELP? - 1", and "DONE - 2". A "Currently Browsing" list shows active websites like docs.google.com, classroom.google.com, and quizlet.com.
- Middle Panel (Insights):** Displays "Insights" for "Caterina Klass" with a note about "Unusual browsing activity". Below this is a list of all students in the class, including Billi Lutes, Latashia Fields, Jessica Shapiro, Erin Parkinson, Gillian Enders, Jamar Raap, Isela Luebbers, Caterina Klass, Kiley Golightly, Ava Huie, Maddie Fodor, Sherman Appell, Holli Atherton, and Zachery Herrada.
- Right Panel (Student Profile):** Focuses on "Erin Parkinson", showing her "Open Tabs" (9), "Browsing History", "Recordings", and "Send Message" options. The main view shows a Google Slides presentation titled "Hamlet" with a video player. Below the video is a list of open tabs, including "Test: Shakespeare | Quizlet", "William Shakespeare - Google Slides", "Browse - Featured", "Hamlet - Google Slides" (highlighted), "hamlet - Google Search", "SparkNotes: Hamlet Video SparkNote", and "Hamlet - Wikipedia".

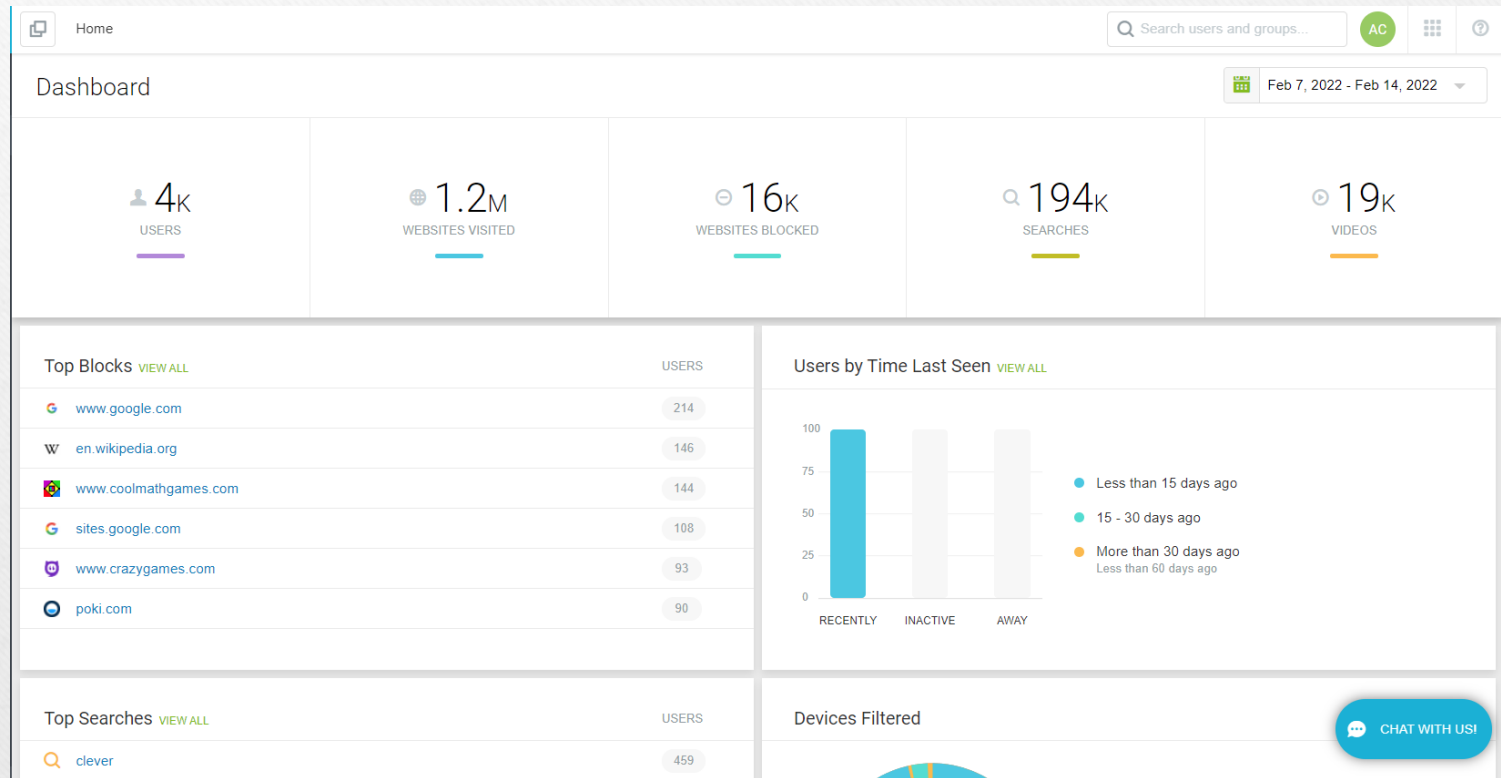
Campus Reporting Tools

Monitoring Program for Computer Labs




Campus Reporting Tools

Relay Filter for Chromebooks




Campus Reporting Tools

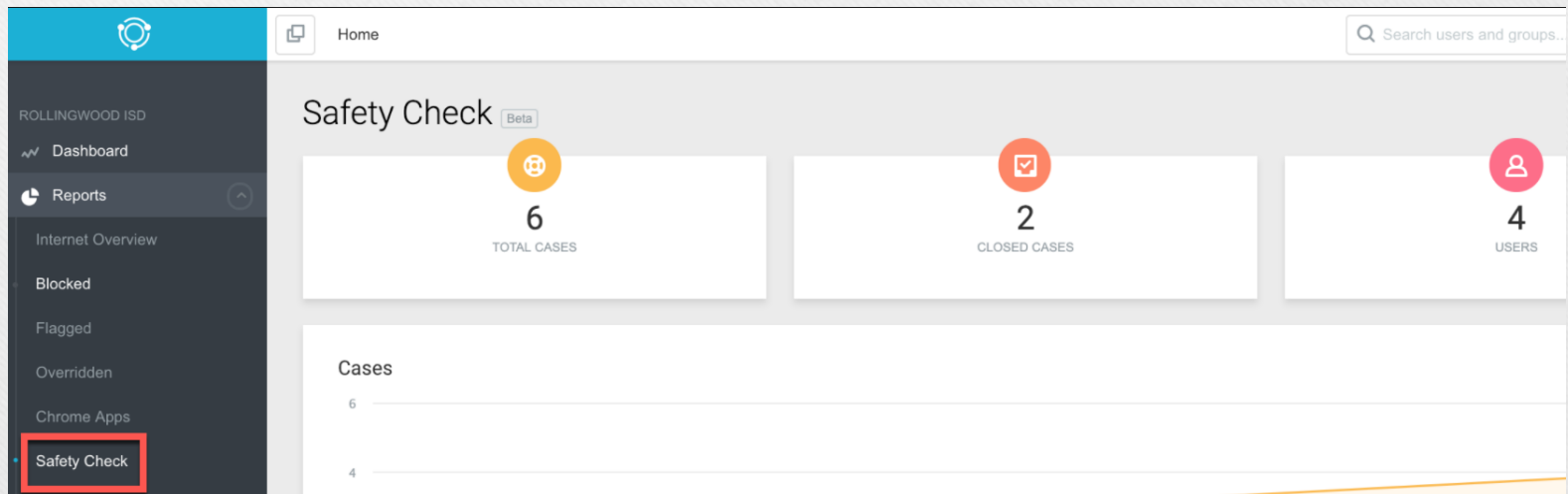
Safety Alerts for Principals



Incident: Violence



Incident: Self-Harm



The screenshot shows the Lightspeed Systems dashboard for a principal at Rollingwood ISD. The interface includes a navigation sidebar on the left with the following items: Dashboard, Reports, Internet Overview, Blocked, Flagged, Overridden, Chrome Apps, and Safety Check (highlighted with a red box). The main content area features a 'Home' button, a search bar for users and groups, and a 'Safety Check' section with a 'Beta' label. This section contains three summary cards: 'TOTAL CASES' with a value of 6, 'CLOSED CASES' with a value of 2, and 'USERS' with a value of 4. Below these cards is a 'Cases' table with two rows of data.

Cases	
6	
4	

We Support & Monitor

- 4,000+ Chromebooks
- 600+ Laptops
- 222 Printers
- 200 iPads
- 75+ Programs

We Support & Monitor

- Online textbooks for all grade levels.
- Flat Panel or Interactive Board with Document Camera in each classroom.
- 174 Wireless Access Points with 2500 clients daily with the capacity of 10,000 clients.
- 20 Computer Labs with 24 desktops each lab.
- All IoT (Internet of Things) – Phones, Access control, Vape Detectors, Cameras, Air Conditioning Control, etc.

Cybersecurity Prevention Partners

- KISD partners with TEA, and other parties not listed, to protect, detect and respond to threats.



K-12 Cybersecurity Initiative



Questions