



Arkansas Leadership Academy (ALA)

Update to the Arkansas State Board of Education

October 14, 2021

Mr. Scott Smith, Arkansas Public School Resource Center

Kerri White, Ed.D., ALA Director

Ms. Dondi Frisinger, Master Principal Program Director

Mr. Ken Rich, ALA Professional Learning Leader





ALA Partnership

Ultimate Goal

To realize **educational equity and excellence** for Arkansas students.

Vision

To be the state's **premier leadership development hub**, where all educational leaders find personalized professional learning **pathways** that best meet their needs while developing **leadership capacity**, resulting in **systemic change** and leading to improved teaching and learning.



ALA Overview

Expected Outcomes

Educational Equity & Excellence

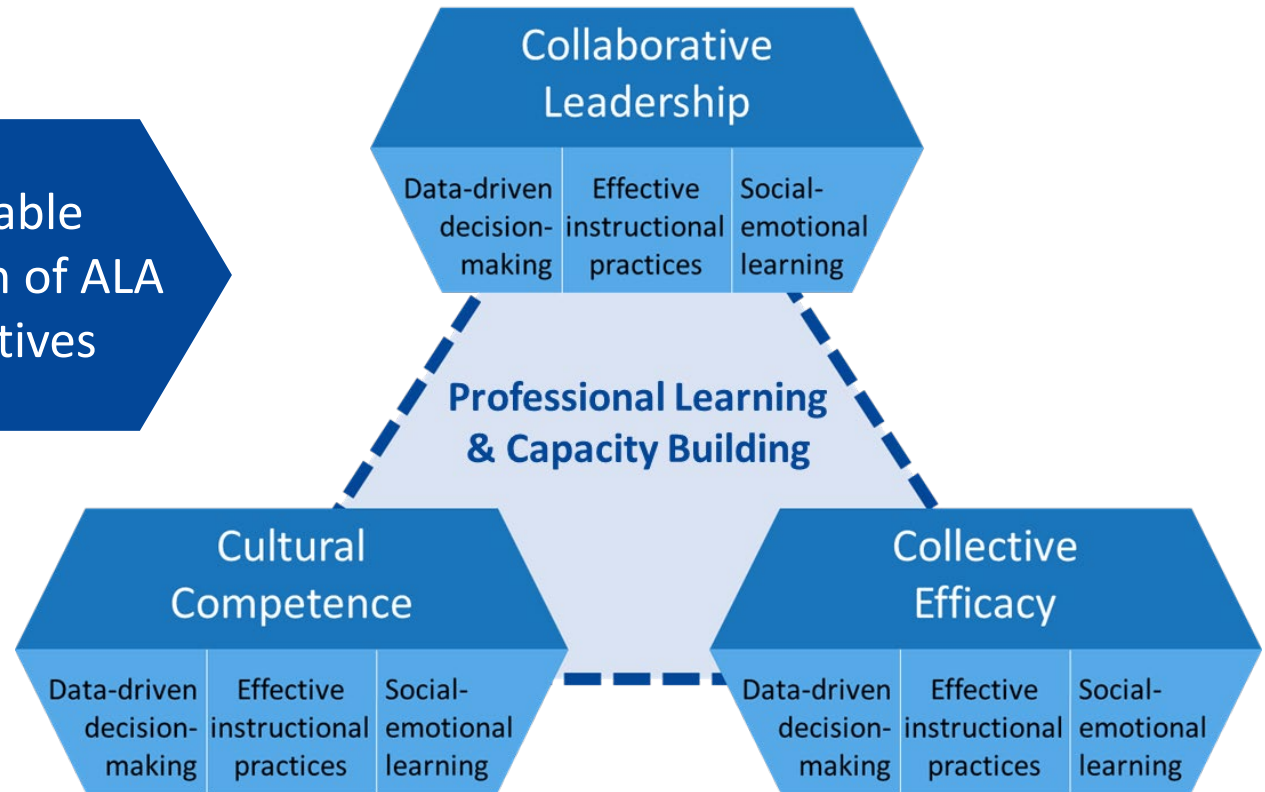


ALA Overview

Strategies

Expansion, Equitable Access, & Integration of ALA Programs & Initiatives

Leadership Development



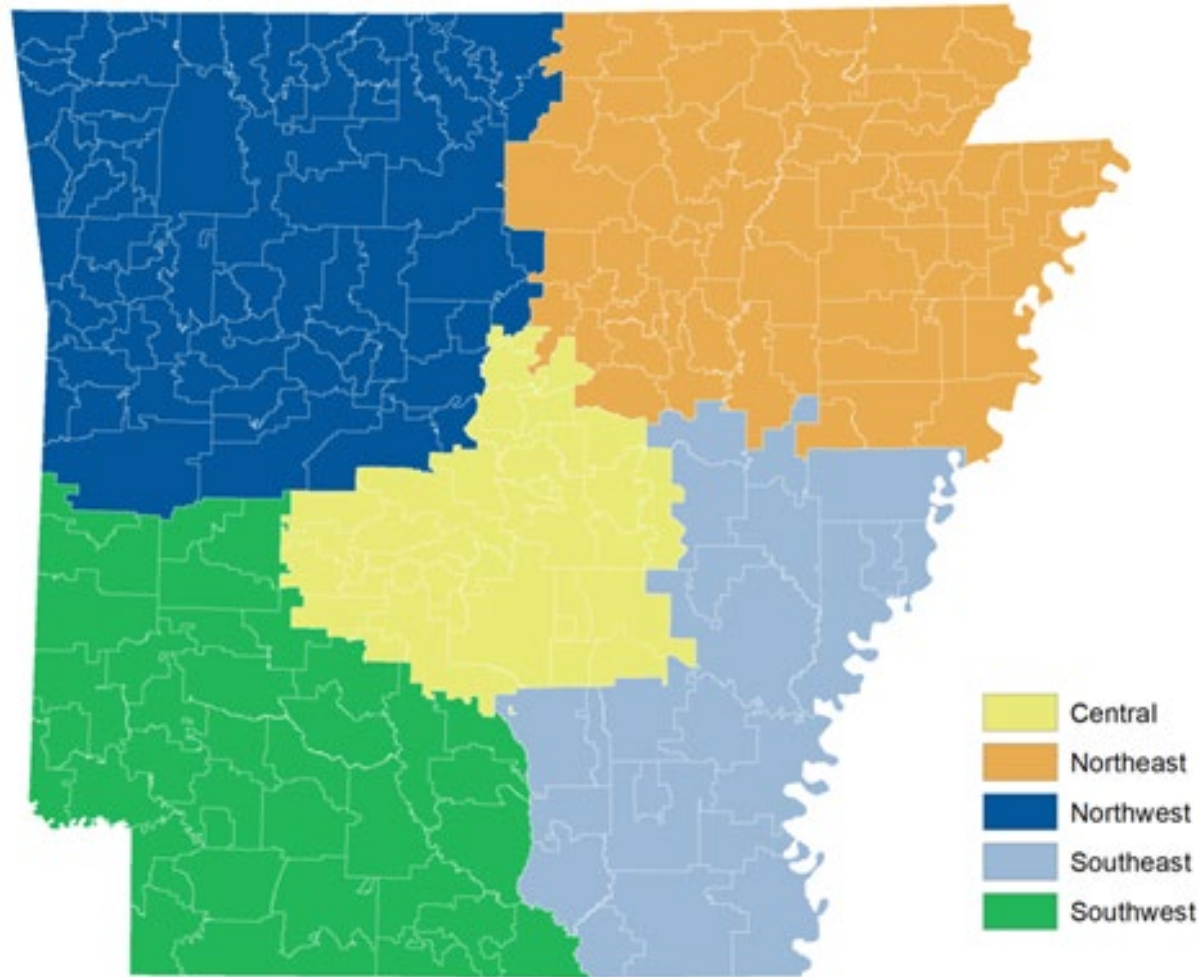
Aligned to and in support of statewide initiatives, including Professional Learning Communities and High Reliability Schools



ALA Overview

**Leverage
Leadership from
the Classroom to
the Boardroom**

**Statewide,
Regional,
Face-to-Face, and
Virtual Options**



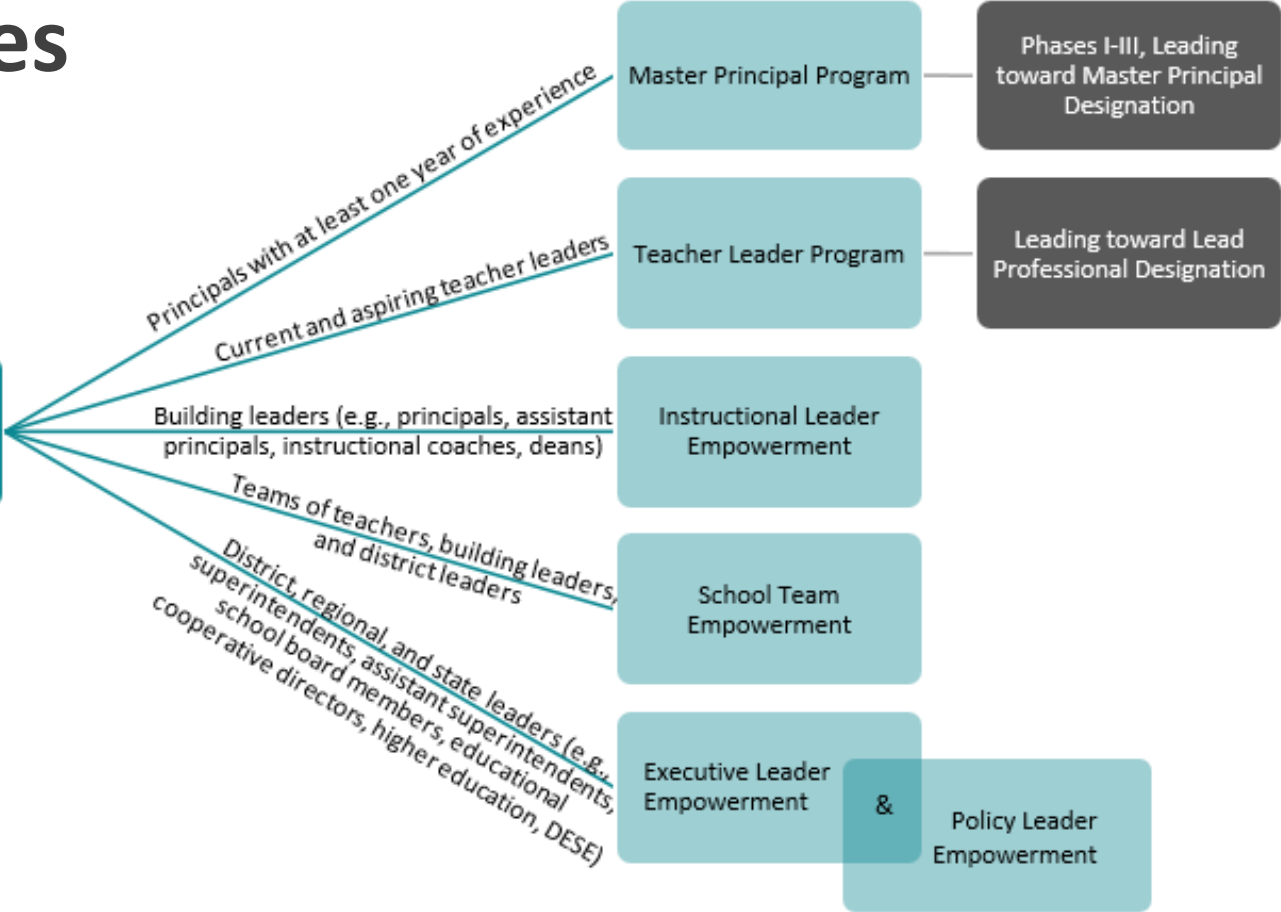
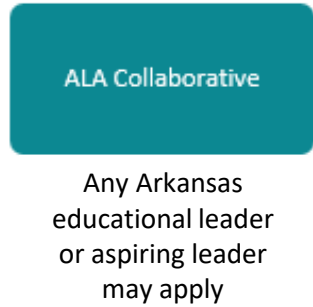
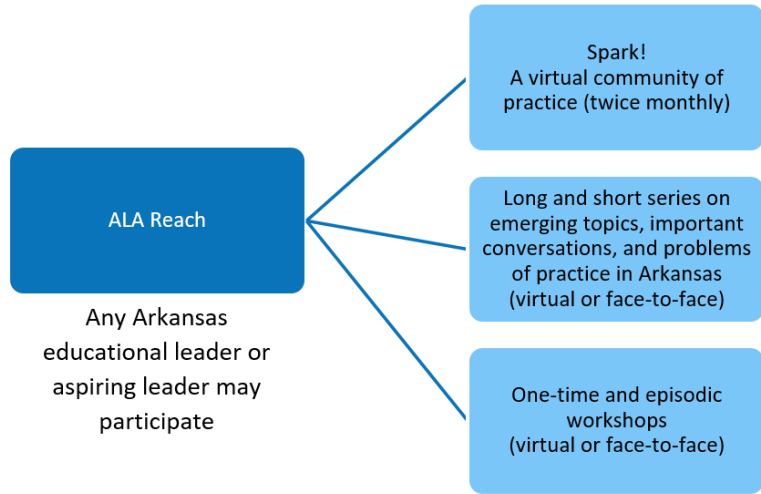
**Increase Access
through Universal
Leadership
Development
Services**

**Expand Reach to
All Regions**



Expansion and Outreach

Participation Opportunities



Expansion and Outreach

SCAN ME



<http://arkansasleadershipacademy.org>



The screenshot shows the Arkansas Leadership Academy website. At the top, there is a navigation bar with the logo and links for Staff, News, Contact Us, and a LANGUAGE dropdown. Below the navigation is a main header with a photo of three women in a meeting. A secondary navigation bar includes links for About Us, ALA Reach, Master Principal Program, Teacher Leader Program, Executive & Policy Leader Empowerment, School Team Empowerment, and Instructional Leader Empowerment.

The main content area features a section titled "We Want to Hear From You!" with a "More Info" button. Below this is a horizontal menu with icons and labels for Instructional Leader Empowerment, School Team Empowerment, Teacher Leader Program, Master Principal Program, Executive & Policy Leader Empowerment, and ALA Reach.

The "ALA EVENT REGISTRATION" section is prominent, with the subtext "View event and complete registration form". It lists several events:

- 20 OCT: ALA Reach: Spark! Leadership Roles Explored
- 29 OCT: Cultural Competence Series with Dr. Dominique Smith Follow-Up Discussion
- 05 NOV: Cultural Competence Series with Dr. Dominique Smith - Content Session 2
- 12 NOV: Cultural Competence Series with Dr. Dominique Smith Follow-up Discussion

 Each event includes a "View Event" link and an "ALA Reach Events" icon. To the right of the event list is a "Tweets by @ArkansasLeader" widget showing a tweet from @ArkansasLeader dated Sep 23, 2021.

At the bottom of the screenshot, there is a photo of a woman high-fiving a group of people in a library setting. Below the photo is a mission statement: "Our ultimate goal for the newly envisioned Arkansas Leadership Academy is to realize educational equity and excellence for Arkansas students." It also includes a vision statement and a note that APSCR was unanimously approved by the State Board of Education on December 10, 2020, and that APSCR has partnered with Arkansas State University and EDUTAS at the University of Oklahoma.



Advisory Committees and Stakeholder Input



Governance

- Twice per year

Project Management and Leadership

- Monthly

Publicity and Communications

- At least three times per year

Fiscal

- Monthly

Audit

- Quarterly

Evaluation

- Quarterly



Advisory Committees



ALA Reach





ALA FOUNDATIONS: HOPE FOR STUDENT SUCCESS & OPPORTUNITIES FOR LEADER GROWTH IN THE 2021-22 SCHOOL YEAR

Join the Arkansas Leadership Academy Zoom session introducing ALA partners members, participation opportunities science of hope for student success

COST: FREE (REGISTRATION REQUIRED)
WHEN: WEDNESDAY, AUGUST 25TH
NOON - 1PM CT
WHERE: LIVE ON ZOOM



ALA FOUNDATIONS: ALA FOCUS AREAS (COLLABORATIVE LEADERSHIP, COLLECTIVE EFFICACY, AND CULTURAL COMPETENCE)



A live Zoom session featuring pre-recorded discussion among national experts.

COST: FREE (REGISTRATION REQUIRED)
WHEN: WEDNESDAY, SEPTEMBER 15TH
NOON - 1PM CT
WHERE: LIVE ON ZOOM



ALA FOUNDATIONS: Introduction to Evidence & Effect Size
Presented by: Dr. Jenni Donohoo

Wednesday, September 29
12:00 – 1:00 PM with
30 minutes of Q&A following

www.arkansasleadershipacademy.org/ALAreach



**ALA Foundations Series:
Now Available On-Demand**

Feedback



Quality - 96%



Relevance - 92%



Usefulness - 94%

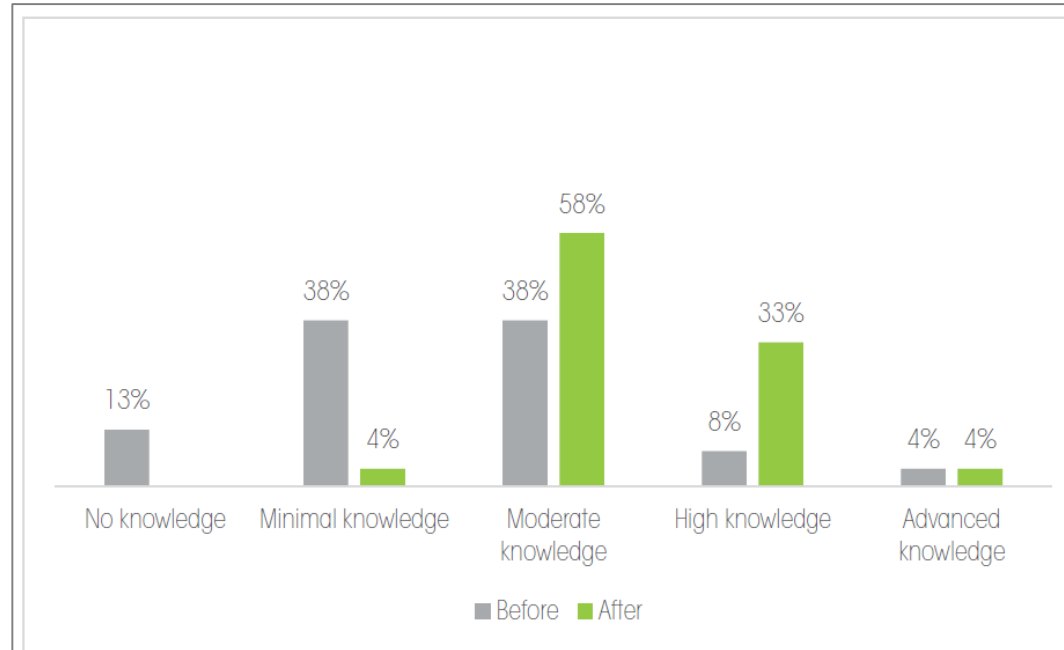


Figure 1. Respondents' ratings of their knowledge about the power of the science of hope prior to and following their participation in the session. (n = 24)

71%
reported an
improvement
in knowledge



ALA Foundations Series:
Now Available On-Demand

Cultural Competency Series

With Dr. Dominique Smith



Using Equity Audits to Build Cultural Competence

Content: 10.01.21 Discussion: 10.29.21

Diverse Learning Environments

Content: 11.5.21 Discussion: 11.12.21

Social-Emotional Engagement and Cultural Competence

Content: 12.3.21 Discussion: 12.17.21

Equitable Access Builds Cultural Competence

Content: 01.14.22 Discussion: 01.28.22

Core Instruction that Builds Cultural Competence

Content: 02.11.22 Discussion: 2.25.22

Teacher and Student Agency and Aspirations Build Cultural Competence

Content: 04.08.22 Discussion: 04.22.22



Free events to be held on the specified Fridays
from 12:00-1:00 PM CT.
Pre-registration is required.



Details and Registration Links

Long-Format Series



1st and 3rd Wednesdays
beginning October 6



REACH
Spark 



Spark 

Why Leadership, Why Me?



This Spark! session features MPP Director, Dondi Frisinger, providing an introductory lesson highlighting the intersection of leadership theory and practice.

Cost: FREE (registration required)
Where: Live on Zoom
When: Wednesday, October 6
12:00-1:00 PM CT



Virtual Community of Practice

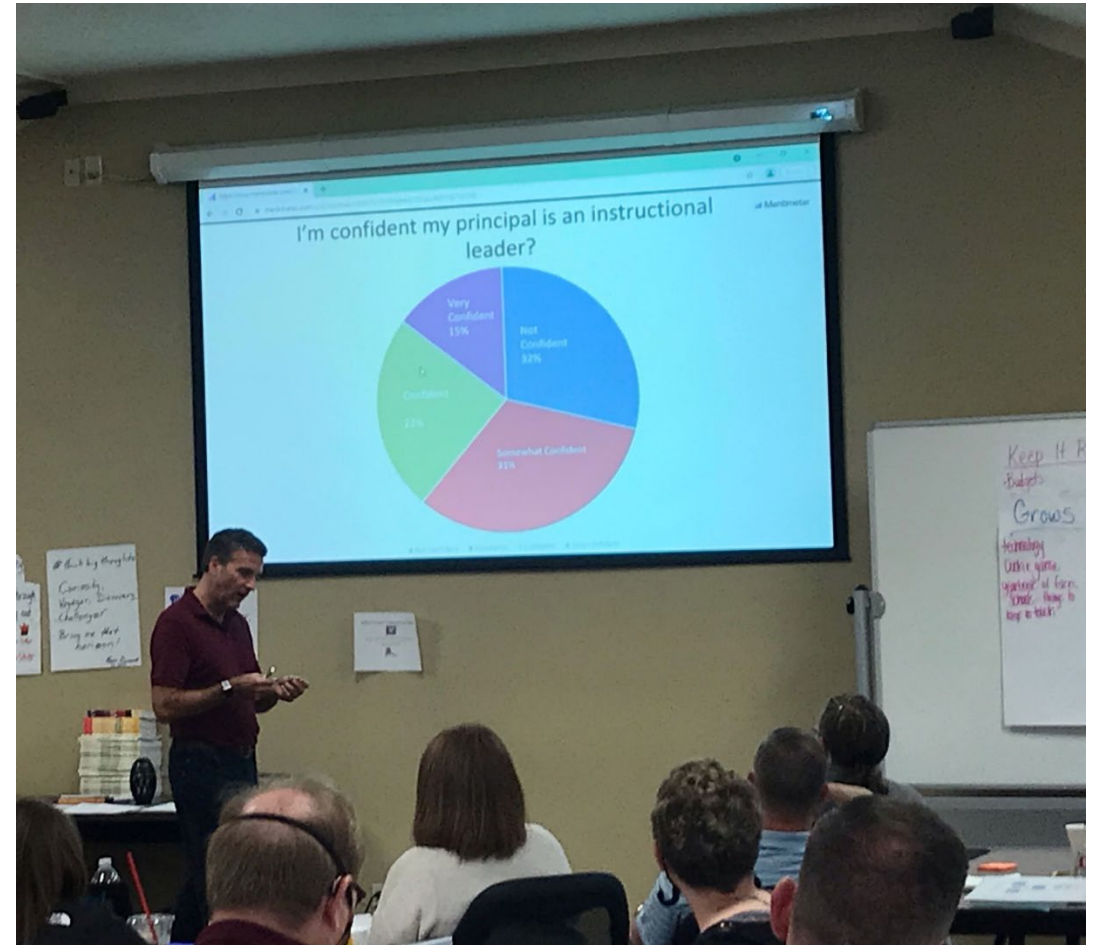
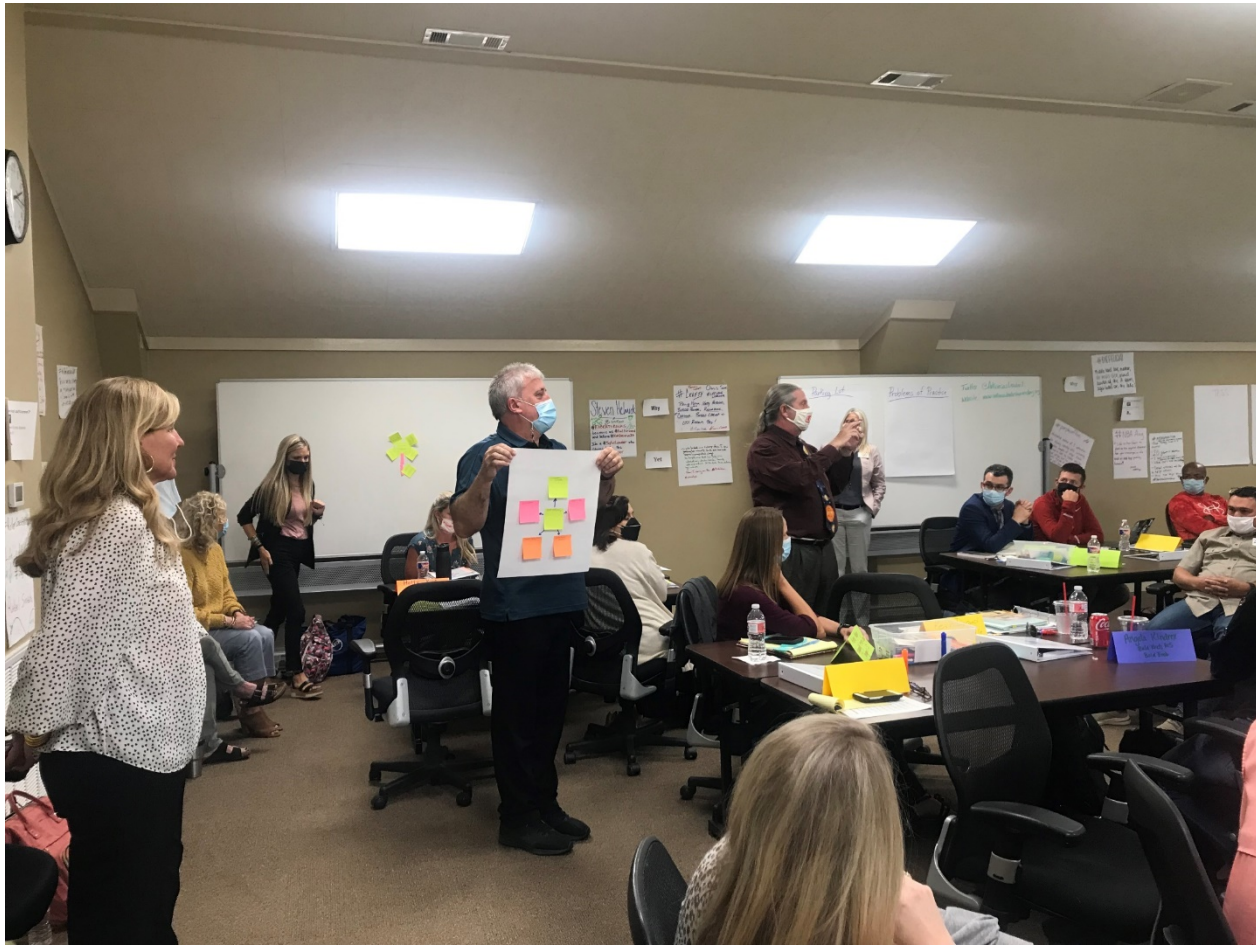
Master Principal Program



Launched September 21-22 (Phases II and III) and September 22-23 (Phase I)



Master Principal Program Phase I



Instructional Leadership

Build It & They Will Come....MPP Field of Dreams

- **71 Participants**
 - Phase I = 32
 - Phase II = 20
 - Phase III = 19
- **Content Focus - September 21-23, 2021**
 - Personal Mission, Vision, and Core Beliefs
 - What is your WHY?
 - Collaborative Leadership, Instructional Leadership, and Collective Efficacy
 - Educator and Author, Dr.Peter DeWitt
- **Upcoming Experts**
 - Melody Morgan (data analysis)
 - Dr. Jim Knight ("Better Conversations")
 - Andrew Easton (personalization of learning)



MPP Training



Other ALA Collaborative Programs and Experiences



Launched September 22-23

- Currently 22 Participants, including Superintendents, Assistant Superintendents, and Educational Service Cooperative Directors
- Content Focus:
 - Supporting Instructional Leaders
 - Coaching/Modeling Collaborative Leadership and Collective Efficacy
 - Problems of Practice – Current Education Issues
 - Leadership Style / Leader Development
- Three multi-day face-to-face engagements (September, February, and April)



Executive Leader Empowerment

Launches October 14

- A 30-minute component in 13 APSRC School Board Training 2 Sessions during the fall semester
- Content Focus:
 - Developing a pipeline of instructional leaders
 - Importance of Collaborative Leadership, Collective Efficacy, and Cultural Competence for continuous school improvement processes



Policy Leader Empowerment

Launches November 3

- Currently accepting applications from school-based teams, including Principals, Instructional Leaders, and Teachers
- Content Focus: Collective Leader Efficacy – Strengthening Instructional Leadership Teams
 - Collective leader efficacy (CLE) is a shared conviction among a school leadership team that they can improve the learning environment for all students. Peter DeWitt, Ed.D. provides the research, explains the drivers, and engages participants in the cycle of inquiry that helps leadership teams to develop collective leader efficacy as a leadership team.
- One virtual engagement (November), three face-to-face engagements (January, February, and March), and two personalized coaching sessions



School Team Empowerment

Launches November 30

- Currently accepting applications from individuals in instructional leadership positions, including Principals, Assistant Principals, Deans and Directors, Instructional Facilitators, Curriculum & Instruction Coaches, and District Instructional Leaders
- **Content Focus:** Collective Teacher and Leader Efficacy, Instructional Leadership, Instructional Equity
- Three two-day face-to-face engagements (November, January, and February)



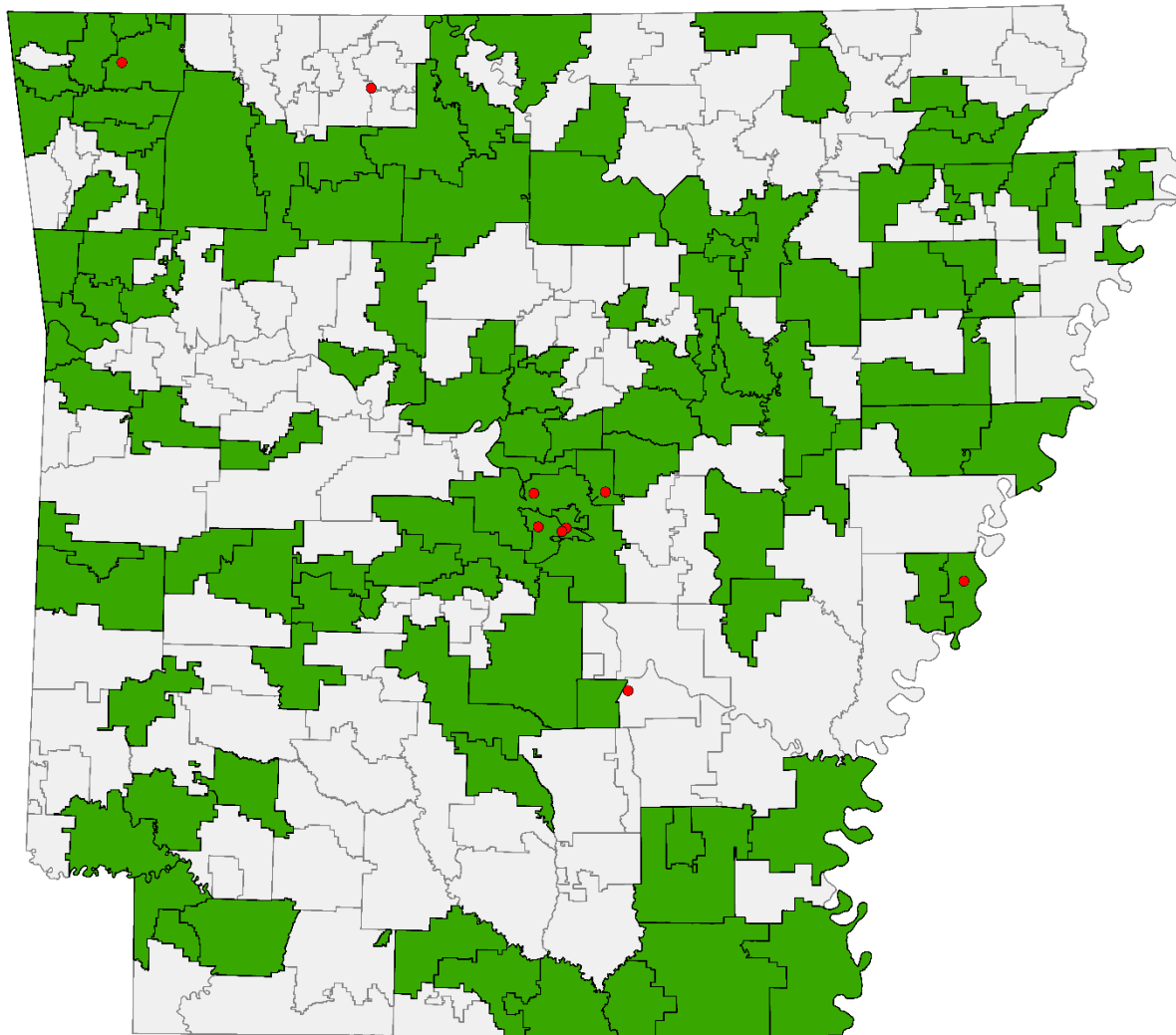
Instructional Leader Empowerment

Set to Launch in Early Spring 2022

- Content Focus: ALA Lead Teacher Themes aligned to Arkansas Teacher Leader Model Standards
 - Collaborating
 - Leading
 - Understanding
 - Learning
 - Analyzing
 - Reflecting
 - Advocating
- Prepares participants to meet requirements for Lead-Teacher Professional designation through the Arkansas Career Continuum



Teacher Leader Program



Statewide Participation

Contact Information

ala@arkansasleadershipacademy.org

(501) 492-4300



Stay Connected