

PHYBS Proposal for Electronic Scoreboard

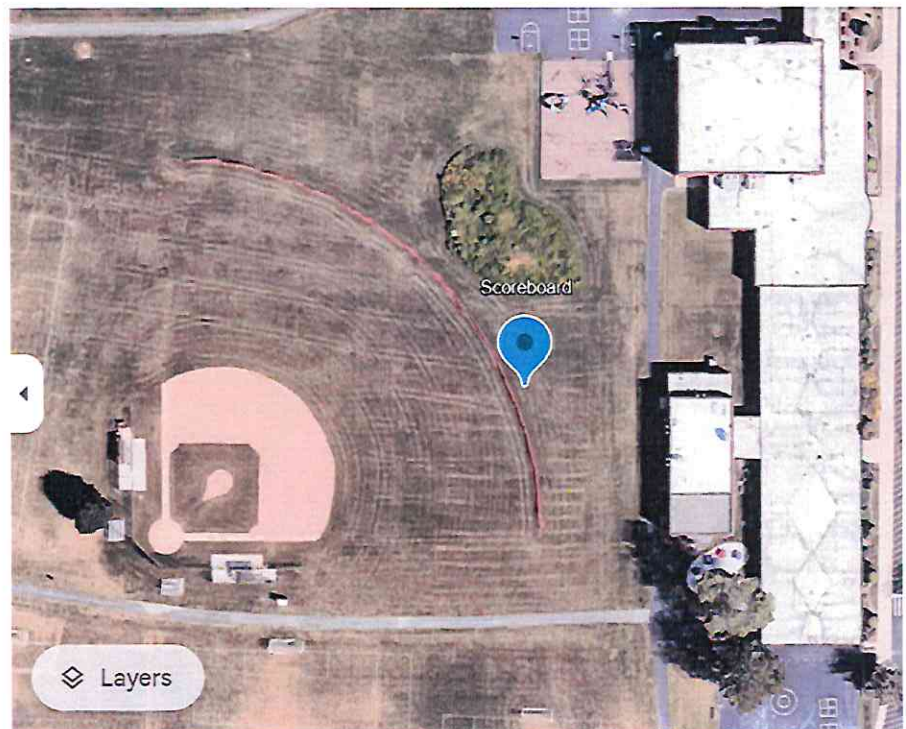
Scope

PHYBS on contingency that electricity proposal is approved would like to install an electronic scoreboard in right field to avoid the thermos grid. 2 permanent support beams would have to be cemented down 72 inches per Vendors recommendation (or cement bases with beams secured to bases) and the cost would be approximately \$9,700 (includes field name template). The board would measure 10 feet off the ground level to avoid vandalism. The exact area is 90 feet west of the end of Betsy Ross where the outdoor Green electrical box is located. The scoreboard measures 9X4 (with one 2 X4 sign which would say Phantoms and weighs approximately 100 pounds (total sign would then be 9X6). Installation scope is included in the Bolder landscaping quote.

Vendor: Sievert Electric / Daktronics Model BA-2518

Installer: Bolder Landscaping 314 W School St Villa Park, IL 60181

Projected date of work: March 28 April 26 (posts and Scoreboard)



PHYBS Board

- private locators for geo thermal
so it's fully marked with depth incl.
- Confirm District will bill PHYBS for electrical monthly

DAKTRONICS BA-2518 PRODUCT SPECIFICATIONS



This outdoor LED baseball/softball scoreboard displays HOME and GUEST scores to 99, INNING to 9 and indicates BALL to three, STRIKE to two and OUT to two. Scoreboard shown with optional striping and amber PanaView® digits.

DIMENSIONS	UNCRATED WEIGHT	POWER (120 VAC)*	
4'-0" H x 9'-0" W x 8" D (1.22 m, 2.74 m, 203 mm)	96 lb (44 kg)	Red/Amber Digits	80 Watts, 0.7 Amp
		White Digits	160 Watts, 1.4 Amps

*Scoreboard requires a dedicated circuit. Models with 240 VAC power at half the indicated amperage are also offered (International Use Only).

DIGITS & INDICATORS

- All digits are 18" (457 mm) high. All indicators are 2" (51 mm) in diameter.
- Select red, amber, or white LED digits and indicators.
- Scoreboard features robust weather-sealed digits (see [DD2495646](#)).
- Digits may be dimmed for night viewing.

CAPTIONS

- HOME, GUEST and INNING captions are 8" (203 mm) high. All other captions are 6" (152 mm) high.
- Standard captions are vinyl, applied to the display face.

DISPLAY COLOR

Choose from 150+ colors (from Martin Senour® paint book) at no additional cost.

CONSTRUCTION

Alcoa aluminum alloy 5052 for excellent corrosion resistance

PRODUCT SAFETY APPROVAL

ETL-listed to UL 48, tested to CSA standards, and CE-labeled

OPERATING TEMPERATURES

- Display: -22° to 122° Fahrenheit (-30° to 50° Celsius)
- Console: 32° to 130° Fahrenheit (0° to 54° Celsius)

WWW.DAKTRONICS.COM E-MAIL: SALES@DAKTRONICS.COM

201 Daktronics Drive, PO Box 5128, Brookings, SD 57006
Phone: 1-800-325-8766 or 605-692-0200 Fax: 605-697-4746
DD1739303 091420 Page 1 of 8



DAKTRONICS BA-2518 PRODUCT SPECIFICATIONS

CONTROL CONSOLES	CONTROL OPTIONS
<p>All Sport® 1600* (see SL-04352)</p> <p><i>*May be upgraded to All Sport 5000 (see SL-03991)</i></p>	<p>Wired (standard): One-pair shielded cable of 22 AWG minimum is required. A cover plate with mounted connector and standard 2" x 4" x 2" (51 mm x 102 mm x 51 mm) outlet box is provided. Connector mates with signal cable from control console.</p> <hr/> <p>Wireless (optional): 2.4 GHz spread spectrum radio features 64 non-interfering channels and 8 broadcast groups (see SL-04370).</p>
<p>RC-200 (see DD3715714)</p>	<p>Optional wireless handheld controller features 2.4 GHz spread spectrum radio with 64 non-interfering channels and 8-10 hours of operation via internal rechargeable battery.</p>
<p>DAK Score & MX-1 (see DD3888368)</p>	<p>CUSTOMER-SUPPLIED mobile device or tablet with DAK Score app installed communicates via Bluetooth® wireless technology to an MX-1 Interface Box that controls the scoreboard through 2.4 GHz radio or wired connection.</p>

MOUNTING

Scoreboard is typically mounted on two vertical beams or poles. Hardware to mount scoreboard on two beams is included; hardware for more beams is at additional cost. Standard mounting uses I-beam clamps. Optional mounting method using angle brackets is also offered; maximum beam width is 10" (254 mm) and maximum beam depth is 13" (330 mm). Refer to attached drawings for more information on mounting methods.

SERVICE ACCESS

Digit panels and electronics are serviced from the front of the scoreboard.

GENERAL INFORMATION

Scoreboard provides scoring capabilities for two teams. 100% solid state electronics are housed in an all aluminum cabinet. Scoreboard is shipped in one section. Scoreboard power is to be provided on a dedicated circuit to prevent loss of game information due to failure of another component on the circuit. Specifications and pricing are subject to change without notice.

OPTIONS & ACCESSORIES

- Scoreboard border striping
- Multiple caption and striping colors (see [DD2101644](#))
- Team name caption in place of HOME
- Individual digit protective screens (see [SL-04939](#))
- Protective netting (see [DD2690927](#))
- Optional angle bracket mounting method
- Advertising/identification panels
- Decorative accents
- Electronic message centers and video displays in multiple sizes

ADVERTISING/IDENTIFICATION PANELS

Backlit & Non-Backlit Top/Bottom:

- 1'-6" H x 9'-0" W (457 mm, 2.74 m)
- 2'-0" H x 9'-0" W (610 mm, 2.74 m)
- 2'-6" H x 9'-0" W (762 mm, 2.74 m)

Non-Backlit Sides:

- 4'-0" H x 4'-0" W (1.22 m, 1.22 m)

For additional non-backlit panel sizes, see [SL-03761](#).

FOR ADDITIONAL INFORMATION

- Installation Specifications: DWG-1183247 (attached)
 - > One Ad Panel: DWG-1174962 (attached)
 - > Two Ad Panels: DWG-1183252 (attached)
- Standard I-beam Mounting: DWG-1129110 (attached)
- Optional Pole Mounting: DWG-1130246 (attached)
- Component Locations: DWG-1124598 (attached)
- Architectural Specifications: See [DD1739294](#)

The Bluetooth® word mark and logos are registered trademarks owned by the Bluetooth SIG, Inc. and any use of such marks by Daktronics, Inc. is under license.

WWW.DAKTRONICS.COM E-MAIL: SALES@DAKTRONICS.COM

All Sport® and PanaView® are trademarks of Daktronics, Inc.
Martin Senour® is a registered trademark of its owner.
DD1739303 091420 Page 2 of 8 Copyright © 2010-2020 Daktronics, Inc.



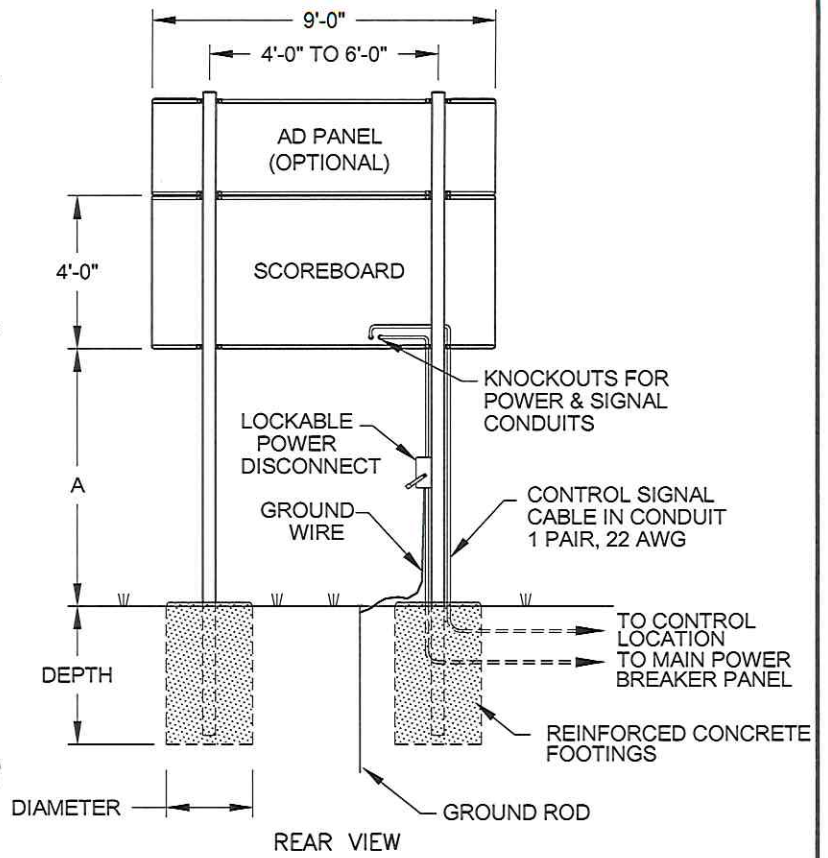
NOTES:

1. FOOTING AND COLUMN SIZES ARE SUGGESTIONS ONLY, PROVIDED TO ASSIST WITH ESTIMATING INSTALLATION COSTS AND ARE NOT INTENDED FOR CONSTRUCTION PURPOSES. THE DESIGN MUST BE CERTIFIED BY A PROFESSIONAL ENGINEER LICENSED IN THE STATE OF THE INSTALLATION BEFORE THEY CAN BE USED FOR FABRICATION OR ERECTION.
2. INTERNATIONAL BUILDING CODE 2012 USED IN DESIGN OF COLUMNS AND FOOTINGS WITH IMPORTANCE FACTOR=1, Kzt=1.0, Kd=0.85, G=0.85. SEISMIC DESIGN WAS NOT CONSIDERED.
3. FOOTING DIMENSIONS ARE BASED ON ASSUMED SOIL CLASS 4 (ALLOWABLE LATERAL BEARING PRESSURE OF 150 psf).
4. STRUCTURAL STEEL IS GRADE A992 (50 ksi) STEEL. CONCRETE SHALL HAVE A MINIMUM 28 DAY COMPRESSIVE STRENGTH OF 2500 psi.
5. THE AVERAGE DISPLAY WEIGHT FOR A LAYOUT CAN NOT EXCEED 8 PSF.
6. DAKTRONICS INC. IS NOT RESPONSIBLE FOR STRUCTURES DESIGNED AND INSTALLED BY OTHERS.
7. LOCAL BUILDING OFFICIALS SHOULD BE CONTACTED TO DETERMINE THE WIND SPEED AND EXPOSURE CATEGORY FOR THE PROPOSED SIGN LOCATION. THE EXPOSURE CATEGORIES B AND C ARE DEFINED AS:

EXPOSURE B - URBAN AND SUBURBAN AREAS, WOODED AREAS, OR OTHER TERRAIN WITH NUMEROUS CLOSELY SPACED OBSTRUCTIONS HAVING THE SIZE OF SINGLE-FAMILY DWELLINGS OR LARGER. THESE CONDITIONS MUST PREVAIL FOR A DISTANCE FROM THE SIGN OF AT LEAST 2,600 FT OR 20 TIMES THE SIGN HEIGHT, WHICHEVER IS GREATER

EXPOSURE C - OPEN TERRAIN WITH SCATTERED OBSTRUCTIONS HAVING HEIGHTS GENERALLY LESS THAN 30 FT. THIS CATEGORY INCLUDES FLAT OPEN COUNTRY, GRASSLANDS, AND ALL WATER SURFACES IN HURRICANE PRONE REGIONS.

8. FOR SPECIFIC PRODUCT DETAILS ON WEIGHT, MOUNTING, ETC. REFER TO THE INDIVIDUAL PRODUCT SPECIFICATION SHEETS.



EXPOSURE B

MODEL BA-2518 WITHOUT AD PANEL						
DISTANCE "A" (SEE FIGURE)	TOTAL DISPLAY SIZE		DESIGN WIND VELOCITY			
			115 MPH	130 MPH	150 MPH	170 MPH
10'-0"	9'-0" x 4'-0"	BEAM FOOTING	W8x10 2'-0"x4'-6"	W8x13 2'-0"x5'-0"	W8x15 2'-0"x6'-0"	W8x17 2'-0"x6'-6"
15'-0"	9'-0" x 4'-0"	BEAM FOOTING	W8x18 2'-0"x5'-6"	W8x18 2'-0"x6'-0"	W8x21 2'-0"x6'-6"	W8x21 2'-0"x7'-0"

EXPOSURE C

MODEL BA-2518 WITHOUT AD PANEL				
DISTANCE "A" (SEE FIGURE)	TOTAL DISPLAY SIZE		DESIGN WIND VELOCITY	
			115 MPH	140 MPH
10'-0"	9'-0" x 4'-0"	BEAM FOOTING	W8x13 2'-0"x5'-6"	W10x17 2'-0"x6'-6"
15'-0"	9'-0" x 4'-0"	BEAM FOOTING	W8x18 2'-0"x6'-0"	W8x21 2'-0"x7'-0"

FOOTING = DIAMETER X DEPTH

EXPOSURE C

MODEL BA-2518 WITH 30"-HIGH HORIZONTAL AD PANEL				
DISTANCE "A" (SEE FIGURE)	TOTAL DISPLAY SIZE		DESIGN WIND VELOCITY	
			115 MPH	140 MPH
10'-0"	9'-0" x 6'-6"	BEAM FOOTING	W8x18 2'-0"x6'-6"	W8x21 2'-0"x7'-6"
15'-0"	9'-0" x 6'-6"	BEAM FOOTING	W6x20 2'-0"x7'-6"	W8x24 2'-0"x8'-6"

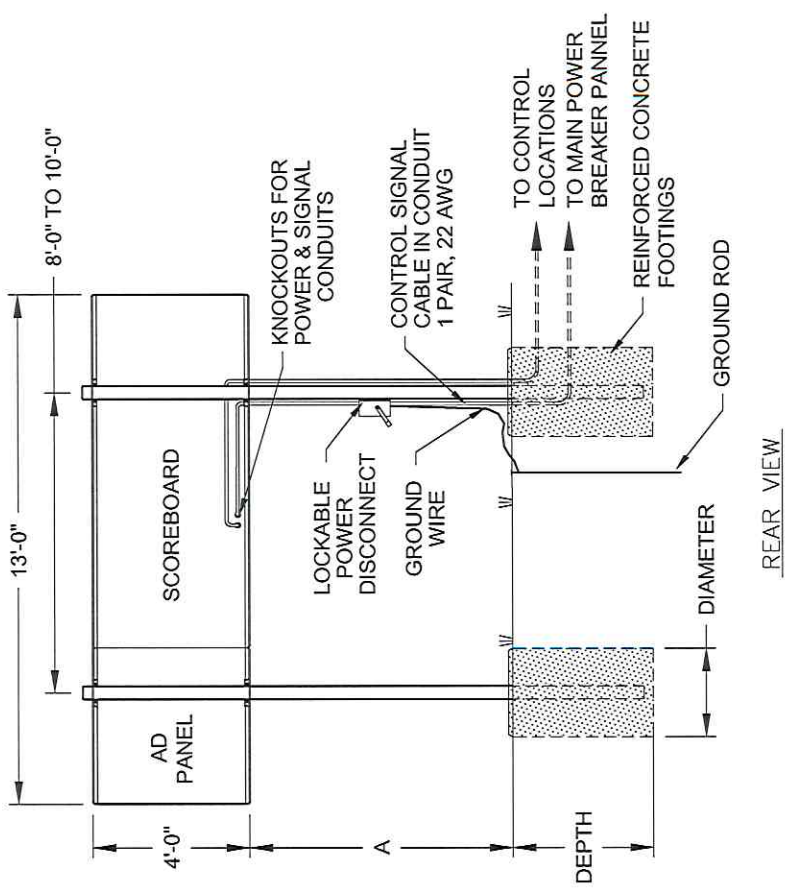
EXPOSURE B

MODEL BA-2518 WITH 30"-HIGH HORIZONTAL AD PANEL						
DISTANCE "A" (SEE FIGURE)	TOTAL DISPLAY SIZE "B"		DESIGN WIND VELOCITY			
			115 MPH	130 MPH	150 MPH	170 MPH
10'-0"	9'-0" x 6'-6"	BEAM FOOTING	W6x15 2'-0"x5'-6"	W6x20 2'-0"x6'-0"	W8x21 2'-0"x6'-6"	W8x21 2'-0"x7'-0"
15'-0"	9'-0" x 6'-6"	BEAM FOOTING	W8x21 2'-0"x6'-6"	W8x24 2'-0"x7'-0"	W8x24 2'-0"x7'-6"	W8x24 2'-0"x8'-6"

	DAKTRONICS, INC.		THE CONCEPTS EXPRESSED AND DETAILS SHOWN ON THIS DRAWING ARE CONFIDENTIAL AND PROPRIETARY. DO NOT REPRODUCE BY ANY MEANS WITHOUT THE EXPRESS WRITTEN CONSENT OF DAKTRONICS, INC. COPYRIGHT 2014 DAKTRONICS, INC.	
	BROOKINGS, SD 57006			
DO NOT SCALE DRAWING				
PROJ: OUTDOOR SCOREBOARDS				
TITLE: INSTALLATION SPECIFICATIONS- BA-2518				
DESIGN: A VANBEMMEL		DRAWN: TTASCHN		DATE: 22JUL14
SCALE: 1=60				
REV	DATE:	BY:	SHEET	REV
				00
		JOB NO:	FUNC-TYPE-SIZE	
		P1091	R-10-A	
				1183247

NOTES:

- FOOTING AND COLUMN SIZES ARE SUGGESTIONS ONLY, PROVIDED TO ASSIST WITH ESTIMATING INSTALLATION COSTS AND ARE NOT INTENDED FOR CONSTRUCTION PURPOSES. THE DESIGN MUST BE CERTIFIED BY A PROFESSIONAL ENGINEER LICENSED IN THE STATE OF THE INSTALLATION BEFORE THEY CAN BE USED FOR FABRICATION OR ERECTION.
- INTERNATIONAL BUILDING CODE 2012 USED IN DESIGN OF COLUMNS AND FOOTINGS WITH IMPORTANCE FACTOR=1, $K_z=1.0$, $K_d=0.85$, $G=0.85$. SEISMIC DESIGN WAS NOT CONSIDERED.
- FOOTING DIMENSIONS ARE BASED ON ASSUMED SOIL CLASS 4 (ALLOWABLE LATERAL BEARING PRESSURE OF 150 psf).
- STRUCTURAL STEEL IS GRADE A992 (50 ksi) STEEL. CONCRETE SHALL HAVE A MINIMUM 28 DAY COMPRESSIVE STRENGTH OF 2500 psi.
- THE AVERAGE DISPLAY WEIGHT FOR A LAYOUT CAN NOT EXCEED 8 PSF.
- DAKTRONICS INC. IS NOT RESPONSIBLE FOR STRUCTURES DESIGNED AND INSTALLED BY OTHERS.
- LOCAL BUILDING OFFICIALS SHOULD BE CONTACTED TO DETERMINE THE WIND SPEED AND EXPOSURE CATEGORY FOR THE PROPOSED SIGN LOCATION. THE EXPOSURE CATEGORIES B AND C ARE DEFINED AS:
 EXPOSURE B - URBAN AND SUBURBAN AREAS, WOODED AREAS, OR OTHER TERRAIN WITH NUMEROUS CLOSELY SPACED OBSTRUCTIONS HAVING THE SIZE OF SINGLE-FAMILY DWELLINGS OR LARGER. THESE CONDITIONS MUST PREVAIL FOR A DISTANCE FROM THE SIGN OF AT LEAST 2,600 ft OR 20 TIMES THE SIGN HEIGHT, WHICHEVER IS GREATER
 EXPOSURE C - OPEN TERRAIN WITH SCATTERED OBSTRUCTIONS HAVING HEIGHTS GENERALLY LESS THAN 30 FT. THIS CATEGORY INCLUDES FLAT OPEN COUNTRY, GRASSLANDS, AND ALL WATER SURFACES IN HURRICANE PRONE REGIONS.
- FOR SPECIFIC PRODUCT DETAILS ON WEIGHT, MOUNTING, ETC. REFER TO THE INDIVIDUAL PRODUCT SPECIFICATION SHEETS.



REAR VIEW

EXPOSURE B

HEIGHT ABOVE GRADE (A) (FT)	DISPLAY HEIGHT (FT)	COLUMN FOOTING	DESIGN WIND VELOCITY		
			115 MPH	130 MPH	150 MPH
10'	4'-0"	COLUMN FOOTING	W6X15 2'-0"x5'-6"	W6X15 2'-0"x6'-0"	W6X15 2'-0"x7'-0"
15'	4'-0"	COLUMN FOOTING	W6X20 2'-0"x6'-6"	W6X20 2'-0"x7'-0"	W6X24 2'-0"x8'-6"

EXPOSURE C

HEIGHT ABOVE GRADE (A) (FT)	DISPLAY HEIGHT (FT)	COLUMN FOOTING	DESIGN WIND VELOCITY		
			115 MPH	140 MPH	170 MPH
10'	4'-0"	COLUMN FOOTING	W6X15 2'-0"x6'-6"	W6X20 2'-0"x7'-6"	W6X20 2'-0"x7'-6"
15'	4'-0"	COLUMN FOOTING	W6X20 2'-0"x7'-6"	W6X24 2'-0"x8'-6"	W8X24 2'-0"x8'-6"

FOOTING DIMENSIONS = DIAMETER X DEPTH

REV 01	DATE: 01 APR 16	REMOVED MODEL NUMBERS TO MAKE DWG GENERIC	BY: KDD
THE CONCEPTS EXPRESSED AND DETAILS SHOWN ON THIS DRAWING ARE CONFIDENTIAL AND PROPRIETARY. DO NOT REPRODUCE BY ANY MEANS WITHOUT THE WRITTEN PERMISSION OF DAKTRONICS OR ITS OWNED SUBSIDIARIES. COPYRIGHT 2016 DAKTRONICS, INC. (USA)			
PROJECT: OUTDOOR LED SCOREBOARDS			
TITLE: INSTALLATIONS SPECS: 4'X9' MODELS- 1 AD, 13' WIDE DISPLAY			
REV 01	DATE: 21 MAY 14	DIM UNITS: INCHES (MILLIMETERS)	SHEET
SCALE: 1/80	DO NOT SCALE DRAWING	JOB NO. P1192	FUND - TYPE - SIZE R-10-A
DESIGN: TTASCHN	DRAWN: TTASCHN	1174962	

NOTES:

1. FOOTING AND COLUMN SIZES ARE SUGGESTIONS ONLY, PROVIDED TO ASSIST WITH ESTIMATING INSTALLATION COSTS AND ARE NOT INTENDED FOR CONSTRUCTION PURPOSES. THE DESIGN MUST BE CERTIFIED BY A PROFESSIONAL ENGINEER LICENSED IN THE STATE OF THE INSTALLATION BEFORE THEY CAN BE USED FOR FABRICATION OR ERECTION.

2. INTERNATIONAL BUILDING CODE 2012 USED IN DESIGN OF COLUMNS AND FOOTINGS WITH IMPORTANCE FACTOR=1, Kzt=1.0, Kd=0.85, G=0.85. SEISMIC DESIGN WAS NOT CONSIDERED.

3. FOOTING DIMENSIONS ARE BASED ON ASSUMED SOIL CLASS 4 (ALLOWABLE LATERAL BEARING PRESSURE OF 150 psf).

4. STRUCTURAL STEEL IS GRADE A992 (50 ksi) STEEL. CONCRETE SHALL HAVE A MINIMUM 28 DAY COMPRESSIVE STRENGTH OF 2500 psi.

5. THE AVERAGE DISPLAY WEIGHT FOR A LAYOUT CAN NOT EXCEED 8 PSF.

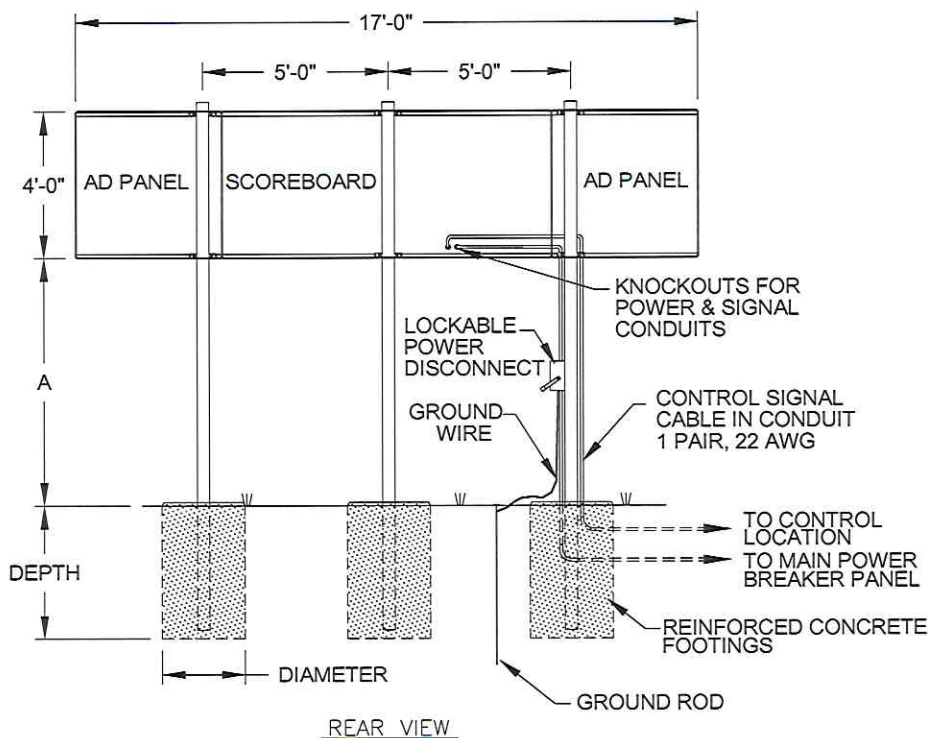
6. DAKTRONICS INC. IS NOT RESPONSIBLE FOR STRUCTURES DESIGNED AND INSTALLED BY OTHERS.

7. LOCAL BUILDING OFFICIALS SHOULD BE CONTACTED TO DETERMINE THE WIND SPEED AND EXPOSURE CATEGORY FOR THE PROPOSED SIGN LOCATION. THE EXPOSURE CATEGORIES B AND C ARE DEFINED AS:

EXPOSURE B - URBAN AND SUBURBAN AREAS, WOODED AREAS, OR OTHER TERRAIN WITH NUMEROUS CLOSELY SPACED OBSTRUCTIONS HAVING THE SIZE OF SINGLE-FAMILY DWELLINGS OR LARGER. THESE CONDITIONS MUST PREVAIL FOR A DISTANCE FROM THE SIGN OF AT LEAST 2,600 ft OR 20 TIMES THE SIGN HEIGHT, WHICHEVER IS GREATER

EXPOSURE C - OPEN TERRAIN WITH SCATTERED OBSTRUCTIONS HAVING HEIGHTS GENERALLY LESS THAN 30 FT. THIS CATEGORY INCLUDES FLAT OPEN COUNTRY, GRASSLANDS, AND ALL WATER SURFACES IN HURRICANE PRONE REGIONS.

8. FOR SPECIFIC PRODUCT DETAILS ON WEIGHT, MOUNTING, ETC. REFER TO THE INDIVIDUAL PRODUCT SPECIFICATION SHEETS.



EXPOSURE B

MODEL BA-2518 WITH SIDE AD PANELS @2						
DISTANCE "A" (SEE FIGURE)	TOTAL DISPLAY SIZE		DESIGN WIND VELOCITY			
			115 MPH	130 MPH	150 MPH	170 MPH
10'-0"	17'-0" x 4'-0"	BEAM FOOTING	W6X15 3'-0" X 4'-0"	W6X15 3'-0" X 4'-6"	W6X15 3'-0" X 5'-0"	W6X15 3'-0" X 5'-6"
15'-0"	17'-0" x 4'-0"	BEAM FOOTING	W8X18 3'-0" X 4'-6"	W8X21 3'-0" X 5'-0"	W8X21 3'-0" X 5'-6"	W4X13 3'-0" X 6'-0"

FOOTING = DIAMETER X DEPTH

EXPOSURE C

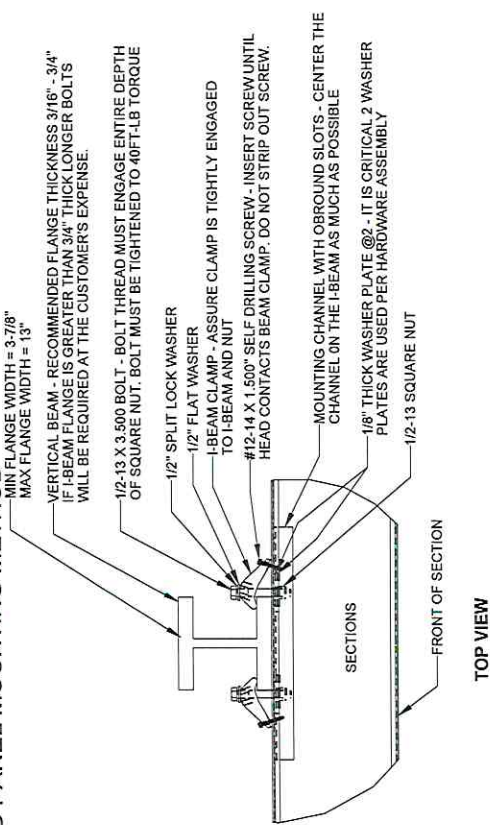
MODEL BA-2518 WITH SIDE AD PANELS @2				
DISTANCE "A" (SEE FIGURE)	TOTAL DISPLAY SIZE		DESIGN WIND VELOCITY	
			115 MPH	140 MPH
10'-0"	17'-0" x 4'-0"	BEAM FOOTING	W6X15 3'-0" X 4'-6"	W6X15 3'-0" X 5'-0"
15'-0"	17'-0" x 4'-0"	BEAM FOOTING	W8X21 3'-0" X 5'-0"	W8X24 3'-0" X 5'-6"

FOOTING = DIAMETER X DEPTH

	DAKTRONICS, INC. BROOKINGS, SD 57006 DO NOT SCALE DRAWING		THE CONCEPTS EXPRESSED AND DETAILS SHOWN ON THIS DRAWING ARE CONFIDENTIAL AND PROPRIETARY. DO NOT REPRODUCE BY ANY MEANS WITHOUT THE EXPRESS WRITTEN CONSENT OF DAKTRONICS, INC. COPYRIGHT 2014 DAKTRONICS, INC.	
	PROJ: OUTDOOR SCOREBOARDS TITLE: INSTALLATION SPECIFICATIONS- BA-2518 W/ 2 ADS			
DESIGN: JBRIGGS		DRAWN: TTASCHN		DATE: 22JUL14
SCALE: 1=100				
SHEET	REV	JOB NO:	FUNC-TYPE-SIZE	
00	P1091	R - 08 - A	1183252	

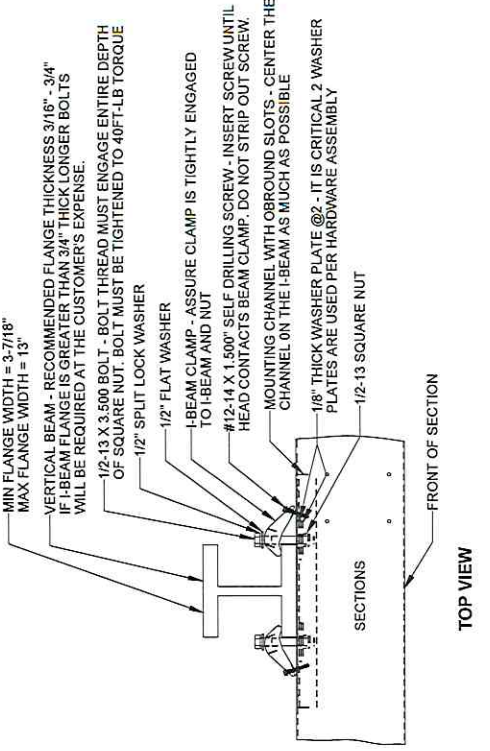
REV	DATE:	BY:
-----	-------	-----

STANDARD SHEETMETAL SCOREBOARD/BACKLIT AD PANEL MOUNTING METHOD



FRONT VIEW

STANDARD NON-BACKLIT AD PANEL MOUNTING METHOD

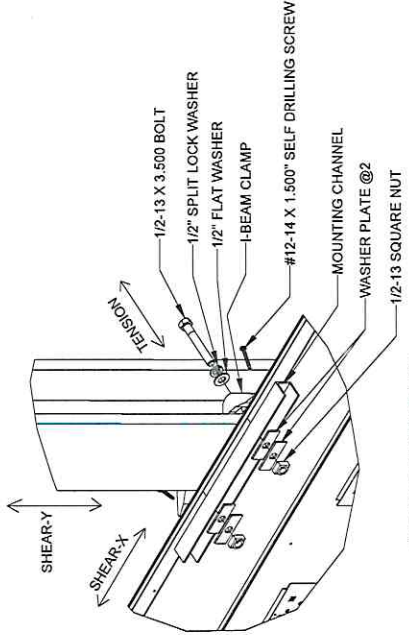


FRONT VIEW

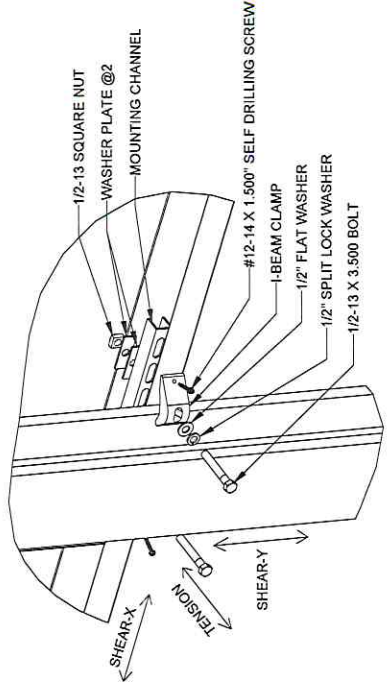
QUALIFIED FOR SECTIONS UP TO 5' IN HEIGHT USING RECOMMENDED STRUCTURE

ALLOWABLE CAPACITY PER EACH CLAMP:
 SHEAR = 160 LBS
 TENSION = 1376 LBS
 SHEAR AND TENSION LOAD DIRECTION ARE AS INDICATED ON ROTATED VIEWS

- MOUNTING INSTRUCTIONS:**
1. LIFT THE FIRST SECTION OF THE DISPLAY INTO POSITION AGAINST I-BEAMS.
 - NOTE: IF THE DISPLAY IS MADE UP OF MULTIPLE SECTIONS ALWAYS INSTALL THE BOTTOM SECTION FIRST AND WORK UP.
 2. STARTING ON THE TOP OF THE SECTION BEING INSTALLED MARK AND DRILL 9/16" HOLES IN THE CENTER OF THE TOP FLANGE OF THE SECTION. MAKE SURE THE HOLES ARE POSITIONED AS CLOSE TO THE I-BEAM FLANGES AS POSSIBLE.
 3. INSTALL ALL THE HARDWARE SHOWN PROVIDED AND TIGHTEN THE SECTION TO THE I-BEAM.
 4. THE SECTION OF THE DISPLAY IS SECURE MOVE TO THE BOTTOM OF THE SECTION AND REPEAT THE STEPS ABOVE.
 5. IF THE DISPLAY IS MADE OF MULTIPLE SECTIONS REPEAT THE ENTIRE PROCEDURE ABOVE.
 6. ENSURE ALL 1/2" HARDWARE IS TORQUED TO THE SPECIFIED AMOUNT.



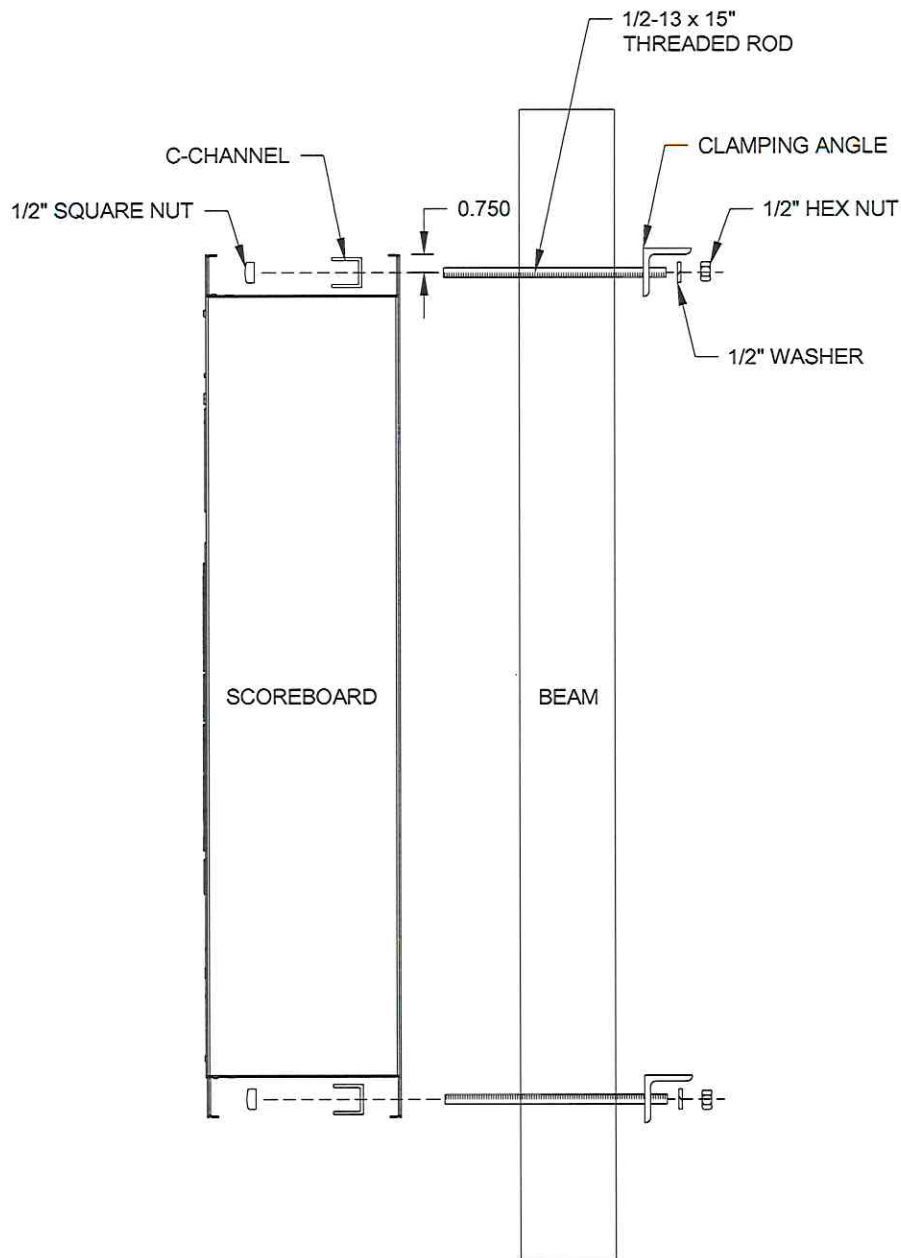
FRONT ROTATED VIEW



REAR ROTATED VIEW


DAKTRONICS, INC. 800 WEST SCALE CREEK AVENUE BOZEMAN, MT 59717-3200 (406) 552-2200	
PROJ: OUTDOOR SCOREBOARD TITLE: I-BEAM CLAMP MOUNTING, SHEET METAL ATTACHMENT	DATE: 17-JUN-15
DESIGN: KSCHNABEL DRAWN: KSCHNABEL	PUNCH-TIME: 02
SCALE: 1/8"	REV: 02
SHEET: 1 OF 1	JOBS: P 1753
E - 10 - B	1129110

REV: 02 DATE: 17 JUN 15 BY: APJ	CHANGED TENSION CAPACITY TO 1376 LBS ADDED MINIMUM AND MAXIMUM FLANGE WIDTHS
REV: 01 DATE: 8 JAN 14 BY: JVA	ALLOWABLE TENSION AND SHEAR CAPACITY DETAILS ADDED TO THIS DRAWING CHANGED DIMS TO BEST FIT

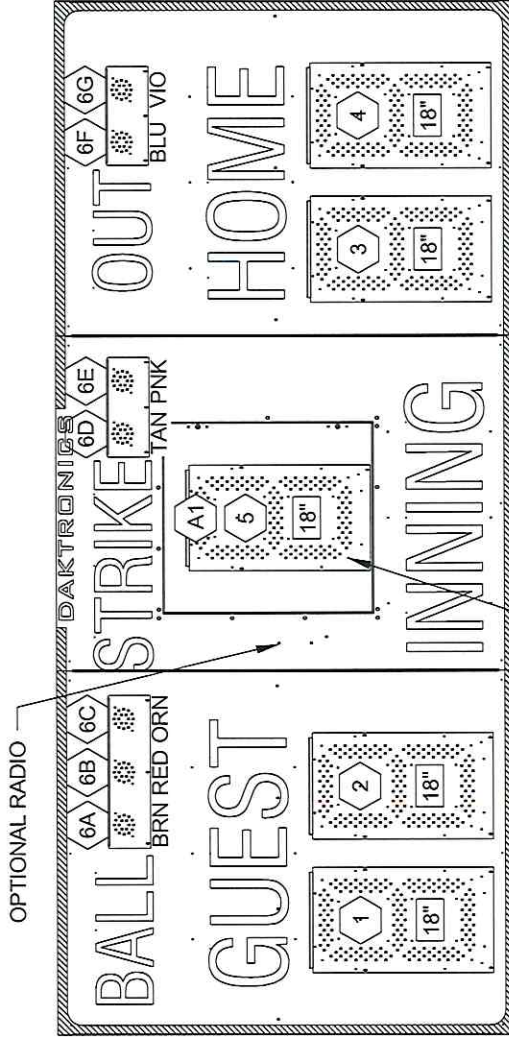


MOUNTING INSTRUCTIONS:

1. USE THE MOUNTING CHANNEL TO DETERMINE WHICH HOLE COMBINATION SHOULD BE USED. BE SURE TO KEEP THE BOLT AS CLOSE TO THE BEAM AS POSSIBLE.
2. USING THE MOUNTING CHANNEL AS A TEMPLATE, DRILL 9/16" HOLES IN THE UPPER AND LOWER REAR FLANGE OF SCOREBOARDS WHERE THE SUPPORTS WILL GO.
3. PLACE SQUARE NUTS INSIDE CHANNEL AND THREAD BOLTS THROUGH.
4. LIFT SCOREBOARD INTO POSITION WITH BOLTS STILL IN PLACE.
5. PLACE MOUNTING ANGLES OVER EACH PAIR OF BOLTS AND SECURE WITH LOCK WASHERS AND HEX NUTS.
6. WHEN SCOREBOARD IS ADJUSTED TO FINAL DESIRED POSITION, TIGHTEN HEX NUTS FIRMLY.

 DAKTRONICS, INC. BROOKINGS, SD 57006 DO NOT SCALE DRAWING		<small>THE CONCEPTS EXPRESSED AND DETAILS SHOWN ON THIS DRAWING ARE CONFIDENTIAL AND PROPRIETARY. DO NOT REPRODUCE BY ANY MEANS WITHOUT THE EXPRESSED WRITTEN CONSENT OF DAKTRONICS, INC. COPYRIGHT 2013 DAKTRONICS, INC.</small>	
		PROJ: OUTDOOR SHEET METAL SCOREBOARDS	
TITLE: SCOREBOARD MOUNTING			
DESIGN: KDRAGT		DRAWN: KDRAGT	
SCALE: 1=8		DATE: 14 MAR 13	
SHEET	REV	JOB NO:	FUNC-TYPE-SIZE
	00	P1753	E - 10 - A
			1130246

BA-2518-R/AW



FRONT VIEW

OPTIONAL RADIO


NOTES:

3 = DRIVER CONNECTOR WIRED TO THAT DIGIT

18" = DIGIT SIZE

6B = DRIVER CONNECTOR AND SEGMENT (PIN) # WIRED TO THAT INDICATOR

A1 = DRIVER NUMBER

REV 03	DATE: 17 AUG 20	PER CN-106068 REMOVED LABELS TO MOVE TO NEW STANDARD	BY: TAN
REV 02	DATE: 03 MAR 20	PER CN-98228, UPDATED LOCATION OF RADIO ANTENNA	BY: KDM
REV 01	DATE: 03 MAR 15	PER EC-17119 ADDED SIGNAL OPTION NOTE AND REMOVED DETAIL VIEWS	BY: ZSW
		<small>THE CONCEPTS EXPRESSED AND DETAILS SHOWN ON THIS DRAWING ARE CONFIDENTIAL AND PROPRIETARY. DO NOT REPRODUCE BY ANY MEANS WITHOUT THE WRITTEN PERMISSION OF DAKTRONICS, INC. OR ITS WHOLLY OWNED SUBSIDIARIES. COPYRIGHT 2020 DAKTRONICS, INC. (USA)</small>	
PROJECT: OUTDOOR SHEETMETAL SCOREBOARDS TITLE: COMPONENT LOCATION; BA-2518-R/AW DATE: 16 JAN 13 DIM UNITS: INCHES (MILLIMETERS) SCALE: 1=20 DO NOT SCALE DRAWING DESIGN: KDRAGT JOB NO. P1753 DRAWN: KDRAGT			
SHEET 03 REV 03 E-10-A 1124598			