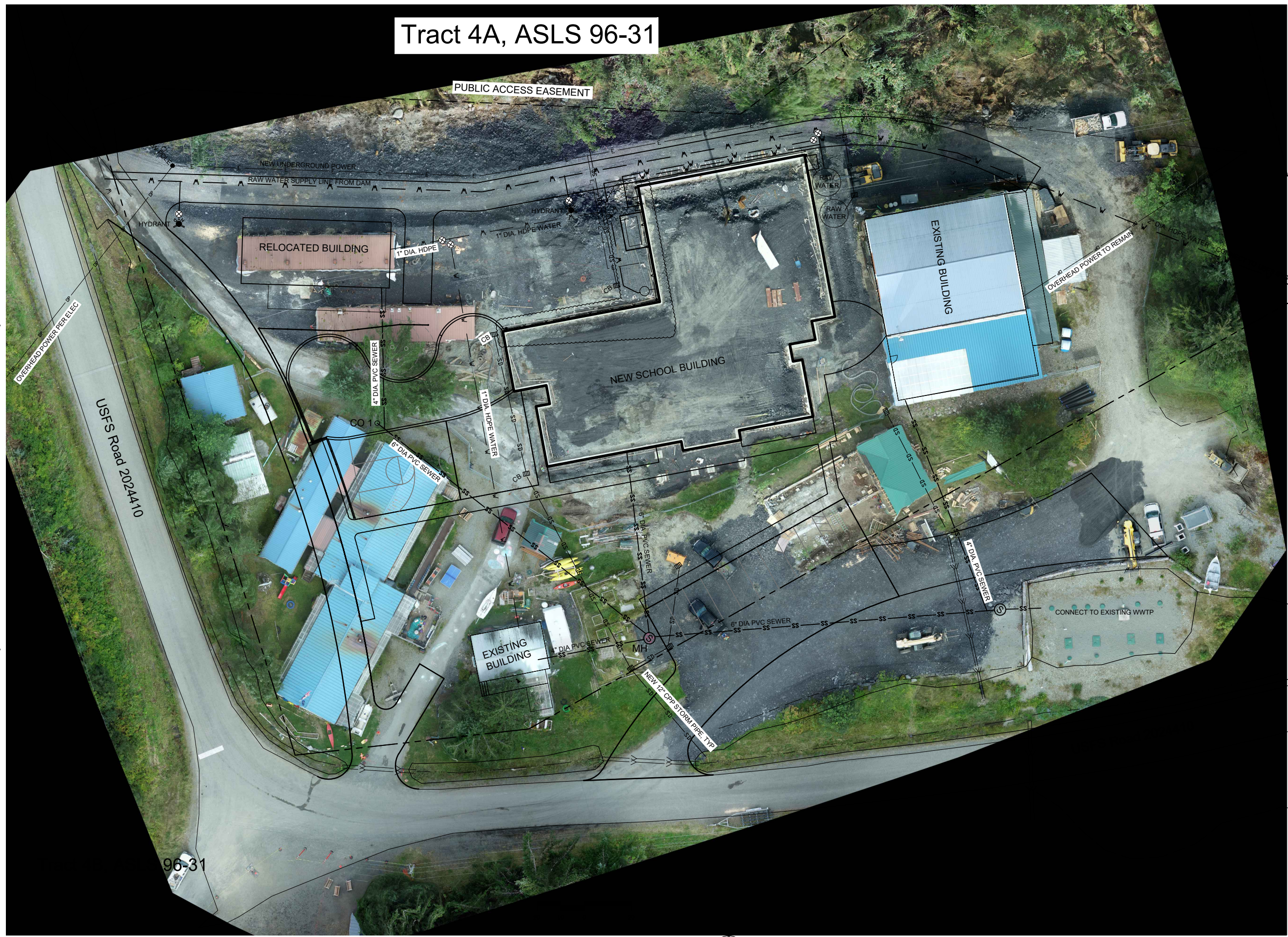
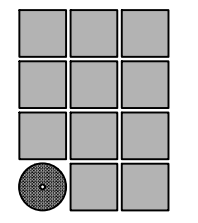


Tract 4A, ASLS 96-31

PUBLIC ACCESS EASEMENT



LOT 3
USFS



Jensen
Yorba
Wall Inc.

522 West 10th Street
Juneau, Alaska 99801
907.586.1070
AECC137
jensenyorbawall.com



**R&M ENGINEERING-
KETCHIKAN, INC.**
7180 REVILLA ROAD, S300
KETCHIKAN, ALASKA 99901
PHONE (907) 225 7917
FAX (907) 225 3441

Southeast Island School District
**Hollis School
Replacement**
Hollis, Alaska

CONSTRUCTION DOCUMENTS	
REVISIONS	
△	
△	
△	

SHEET TITLE
**PROPOSED
UTILITY PLAN**

DATE: APRIL 12, 2022
FILE: 20018

C201

