

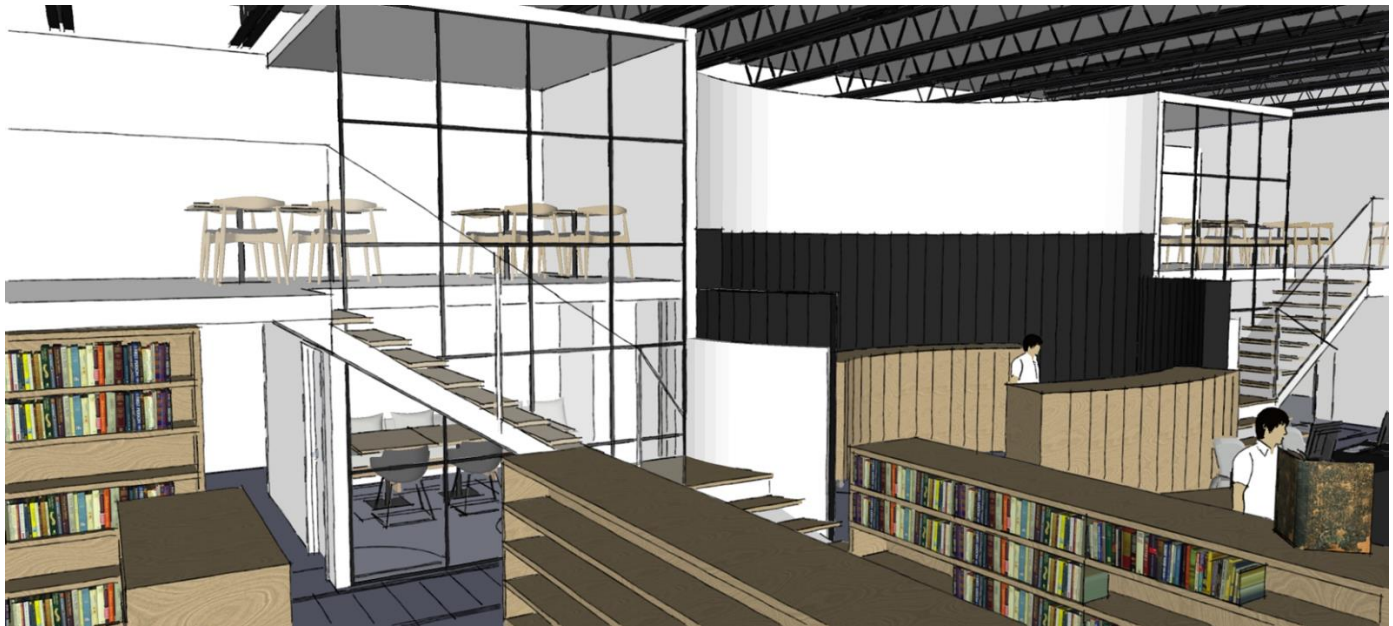
Vision Report

Currently a contract with RATIO is under review. Next steps will be developed quickly following the successful execution of the contract. An anticipated step will be to schedule a workshop with the library board, particularly to discuss and explore current options for expanding parking capacity.

Branch Library

The features that we anticipate will define the West Branch are:

- Holds Pickup/courier service
- Popular Collection
- Modular Shelving
- Comfortable furniture
- Meeting Space
- Enclosed Patio
- Drive-up book return
- Mezzanine level (pictured below)



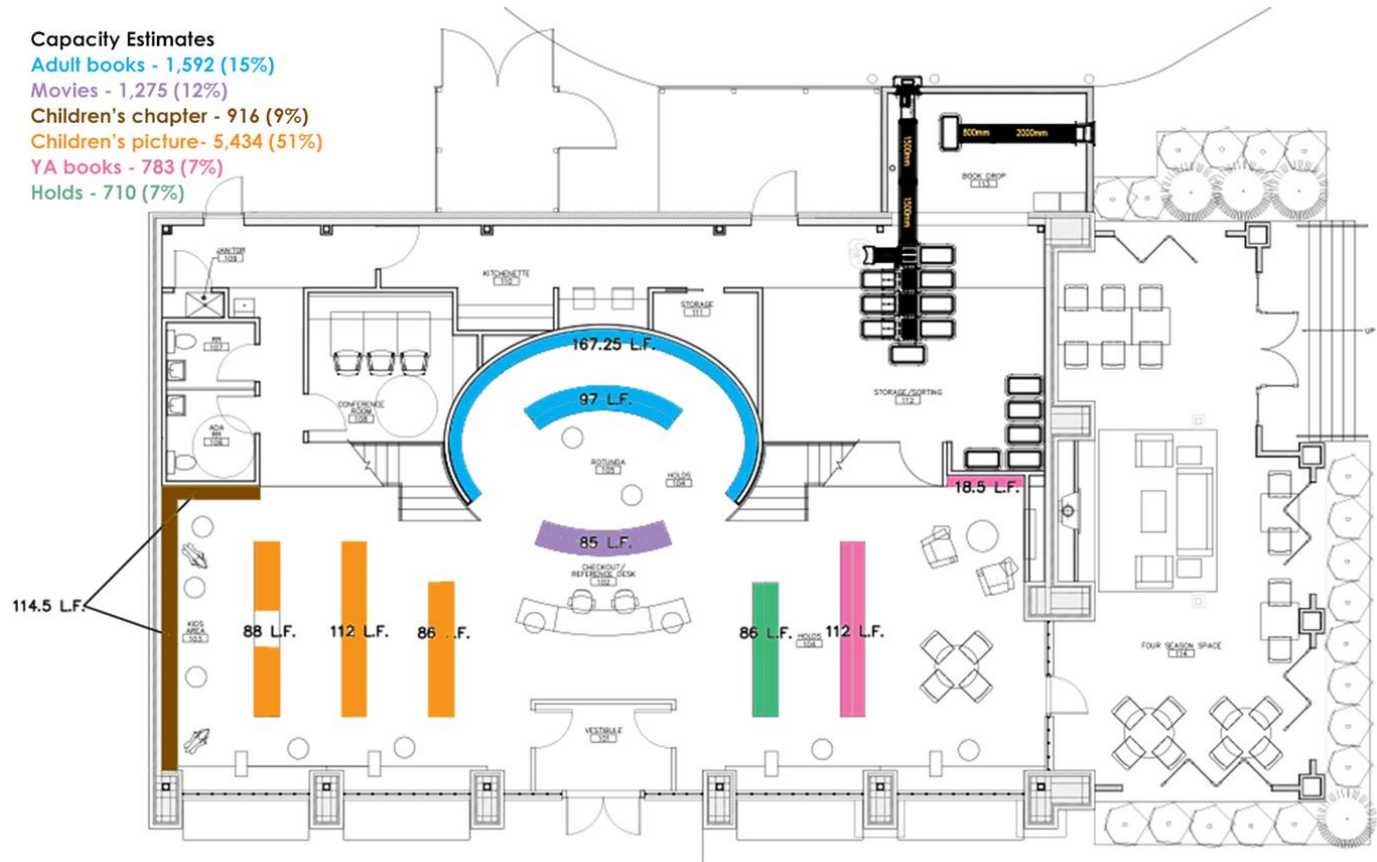
I reported at the last meeting that the mezzanine levels were split to accommodate HVAC and building related material. After discussing it further with Sara Marr-Schwartzkopf at Rowland Design, we also felt the split brings an important aesthetic element to the space.



Pictured above is a rendering of the view from the right-side mezzanine. We are still discussing the best way to handle the mezzanine spaces. Options include having it as open and additional seating, or as a managed meeting space available by reservation.



Pictured above is a rendering of a view from the teen space/patio side of the building. Note the modular shelving. Shelving in the CYS area may be curved to play off of the big curved wall.



The above design layout reflects a mostly current version of the space. I have included it in this report to highlight our current collection strategy. Because space is limited and therefore at a premium, every bit of shelf space has to count. We are factoring in the courier element to the collection. Patrons of the West Branch will have the ability to request materials from the main library and pick them up and check them out at the branch.

We have several options to accomplish the courier function. One option is to continue with the current courier service we are using for the west side book drop pickup. The parameters of the service would need to be re-negotiated as the branch model will be more complicated. Another option is to explore other possible courier services: off-duty Carmel school buses could be a viable option for example. A third option is that we could take this service on in-house and our own staff could perform the service.

Because of the courier functionality, we have concluded that the small branch collection will not need to have duplicate copies of books on the shelf. Patrons of the West Branch will have the ability to access duplicate copies of popular items and bestsellers through courier, and so the branch collection can be richer and more diverse and broad in scope as a result.



The above rendering illustrates the enclosed patio of the branch.

At our October 17 staff meeting I shared with the staff an anticipated timeline of events relating to our vision projects. I am presenting the same timeline here in this report. I emphasize that the branch dates are based on Rowland's estimates and are more reliable than the main library renovation dates, mainly due to not being as far along in our process and to continued uncertainty as to how quickly we can resolve our parking questions. Again, RATIO anticipates a workshop in the near future with the board to discuss parking.

- **November 2018:**
 - *Branch design completed*
 - *RATIO has initial meetings*
- **January 2019:**
 - *Branch construction documents completed*
- **February 2019:**
 - *Branch construction begins*
 - *Parking issues resolved; roadmap established*
- **March/April/May/June/July 2019:**
 - *Main library renovation design in progress*
 - *Branch construction continues*
- **August 2019:**
 - *Branch opens*
 - *Library seeks new bond to fund renovation project for main library*