



Denton Independent School District

WINDLE

Ann Windle School For Young Children



And

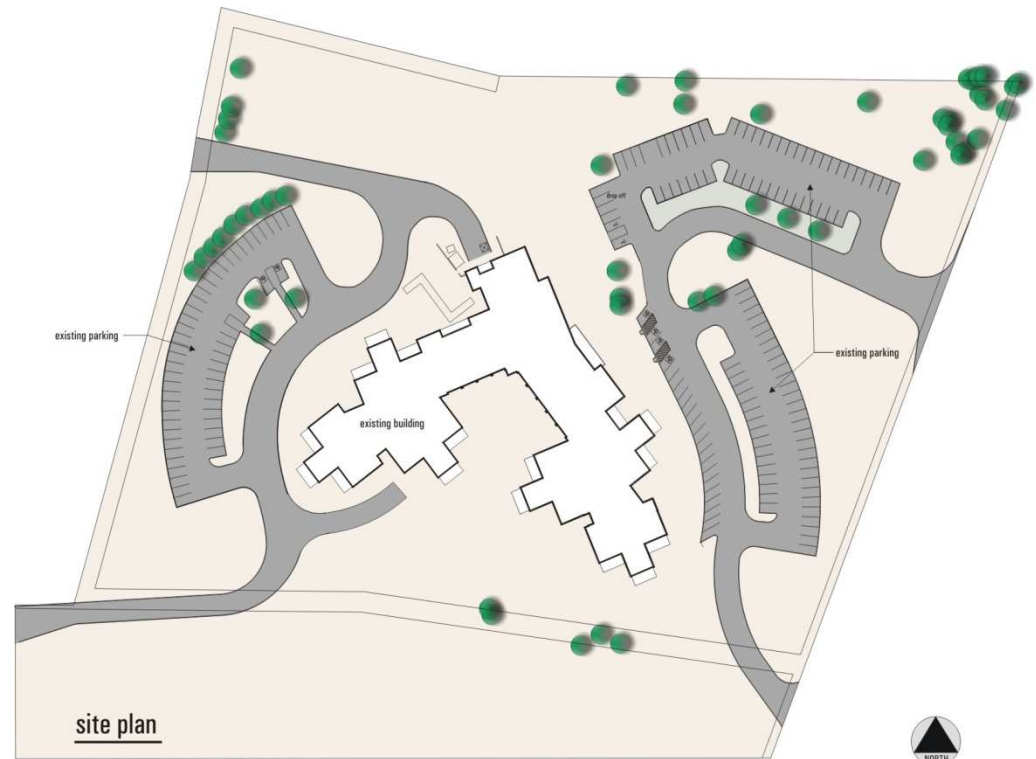
Denton ISD Employee Day Care Center

April 22, 2008

C O R G A N

Existing Ann Windle School Site Plan

- 41,200 sf.
- Built 2000
- 18 Classrooms
- Student Design Capacity 280



BUDGET ANALYSIS



BUDGET ANALYSIS

- 2004 – BOND PROGRAM
 - \$ 6,000,000
- 2007 – BOND PROGRAM
 - \$ 2,000,000
- THE ABOVE BUDGETS ARE TOTAL COSTS INCLUDING ALL DEVELOPMENT COSTS, FFE, A/E FEES, CONSTRUCTION COSTS, PERMITS, TECHNOLOGY, ETC.



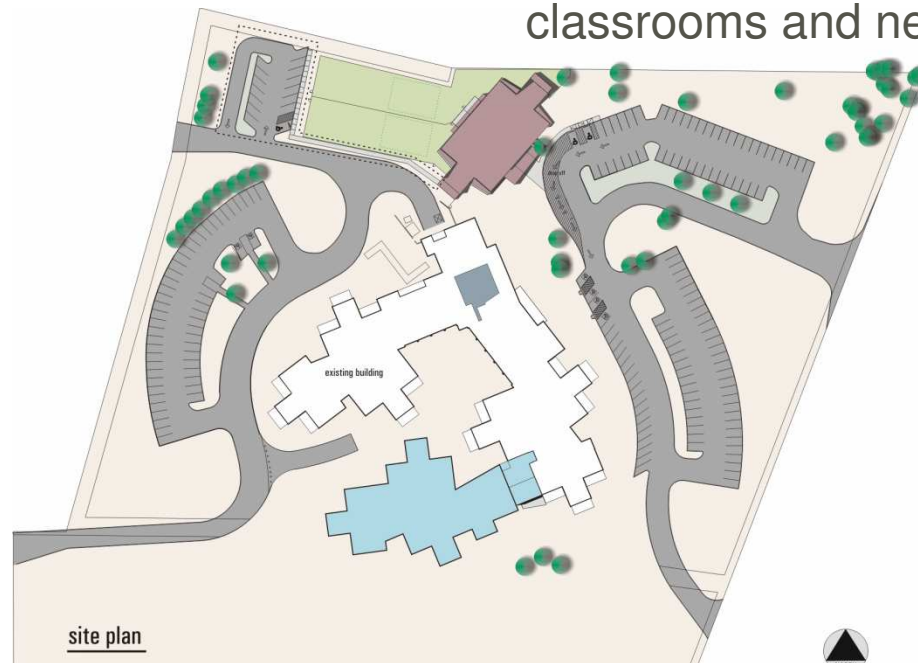
PROPOSED OPTION 1

NEW DAY CARE CENTER AND CLASSROOM ADDITIONS TO EXISTING ANN WINDLE SCHOOL



OPTION 1

- New Day Care Center
- Addition to existing Ann Windle School – adding 9 new classrooms and new library



PROJECT SCHEDULE (Option 1)

- Day Care Center
 - Start construction June 2008
 - Open January 2009
- Cost :
 - Construction + Fees - \$1,900,000
 - F.F.E - \$100,000
 - Total Costs - \$2,000,000
- Addition to the existing Ann Windle School
 - Adds 9 classrooms + library
 - Start construction August 2008
 - Open August 2009
 - Adds 140 students
- Cost :
 - Construction + Fees - \$5,700,000
 - F.F.E. - \$300,000
 - Total Costs - \$6,000,000



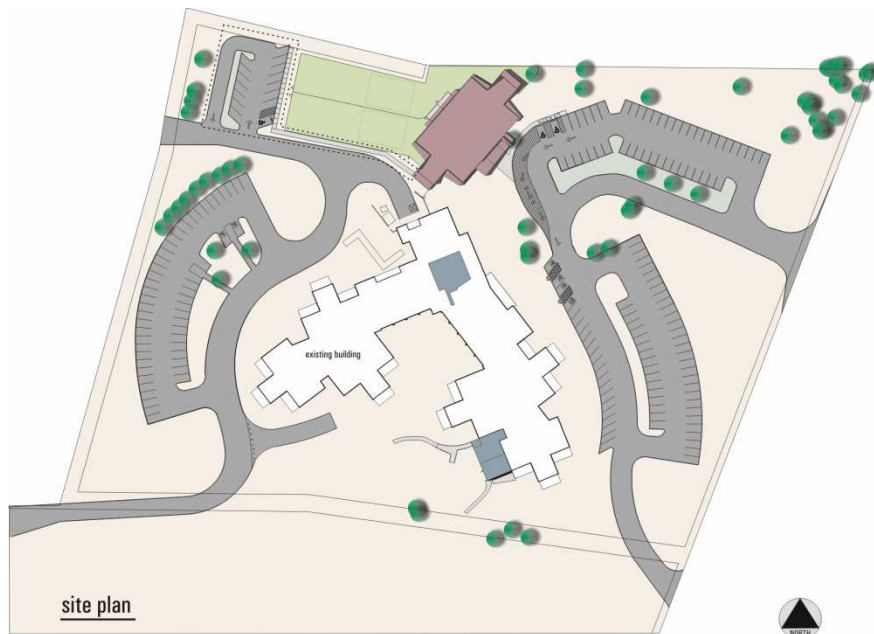
PROPOSED OPTION 2

NEW DAY CARE CENTER ON EXISTING ANN WINDLE SITE AND PARTIAL NEW EARLY CHILDHOOD
CENTER ON NEW SITE

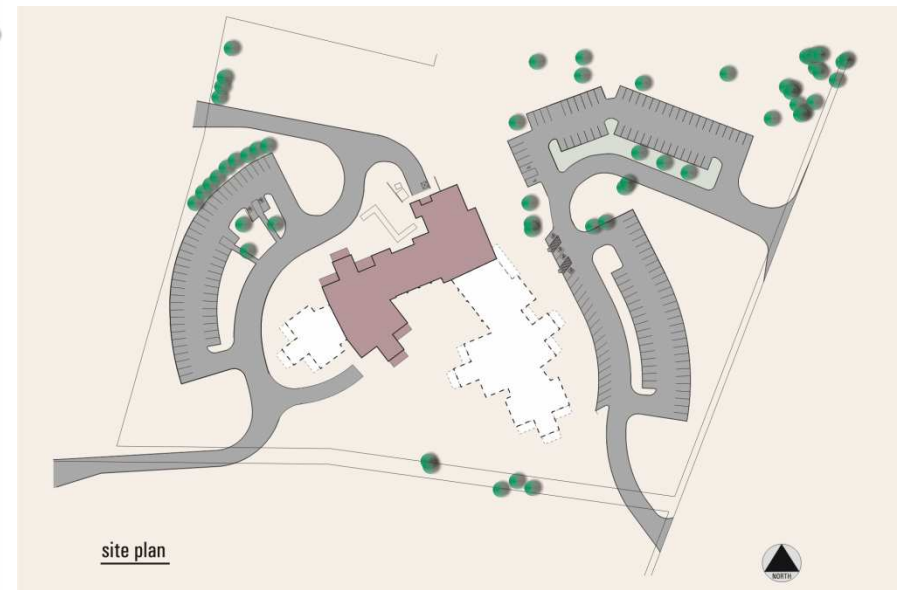


OPTION 2

- New Day Care Center on Existing Site



- New Partial Early Childhood Center located on a New Site



PROJECT SCHEDULE (Option 2)

- New Day Care Center on Existing Site

- Starts construction June 2008
- Open January 2009

- Cost :

- Construction + Fees - \$1,900,000
- Furniture, Fixtures, & Equipment - \$100,000
- Total Costs - \$2,000,000



- New partial 2004 Early Childhood Center on New Site

- Starts construction August 2008
- Open August 2009
- Builds 21,100± SF of new facility on a new site

- Cost :

- Construction + Fees - \$5,700,000
- Furniture, Fixtures, & Equipment - \$300,000
- Total Costs - \$6,000,000 *

* Does not include purchase of new site

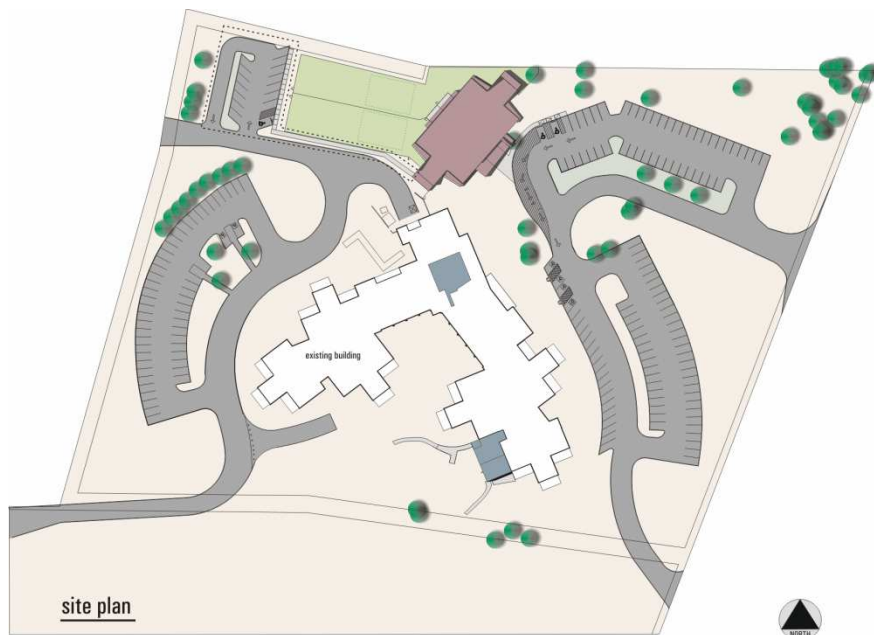
PROPOSED OPTION 3

NEW DAY CARE CENTER ON EXISTING ANN WINDLE SITE AND NEW EARLY CHILDHOOD CENTER ON NEW SITE

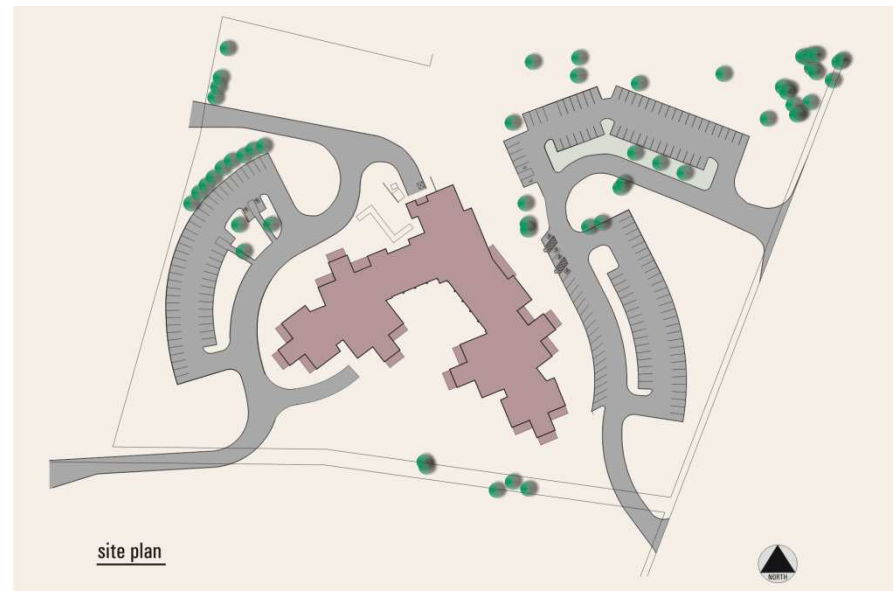


OPTION 3

- New Day Care Center



- New 2004 Early Childhood Center on a New Site



PROJECT SCHEDULE (Option 3)

- New Day Care Center

- Start construction January 2008
- Open January 2009

- Cost

- Construction + Fees - \$1,900,000
- Furniture, Fixtures, & Equipment
 - \$100,000
- Total Costs - \$2,000,000

- New 2004 Early Childhood Center

- Start construction August 2008
- Open August 2009
- 41,200 sf
- 280 student capacity

- Cost

- Construction + Fees - \$10,000,000
- Furniture, Fixtures
 - \$500,000
- Total Costs - \$10,500,000 *

* Does not include purchase of new site

