

**June 2016**

Derby Public Schools

# Performance Dashboard

---

## Derby High School

Martin Pascal, Principal

*“People without information cannot act. People with information cannot help but act.”*

*Ken Blanchard*



Promotion:

Percent of students promoted

	9	10	11
<b>June 2016</b>	82.47	87.06	83.16
<b>June, 2015</b>	81.61	98.82	87.64
<b>June, 2014</b>	93%	91%	97%
<b>June, 2013</b>	88%	86%	97%
<b>June, 2012</b>	89%	98%	98%
<b>June, 2011</b>	86%	84%	94%

Dropout:

<u>Year</u>	<u>Annual Dropout Rate</u>
<b>2016</b>	11.58
<b>2015</b>	9.18%
<b>2014</b>	10.89%
<b>2013</b>	3.6%
<b>2012</b>	4.5%
<b>2011</b>	7.2%

## State Four-Year Adjusted Cohort Graduation Rates:

Adjusted Cohort are those students who started high school in the ninth grade for the first time and graduate in four years along with any students who enter on grade level at any point during the four year period. Student who transfer out are not included. Any student who discontinues schooling, leaves for a GED or ACD program, or tells the school they are transferring to another school, but never registers with that school are considered a Cohort Dropout, and would be included in the Non-Graduates Other column.

<u>Year</u>	<u>Graduates 4-Year Rate</u>	<u>Non-Graduates Still Enrolled</u>	<u>Non-Graduates Other</u>
<b>2016</b>	83.16	11.58	5.26
<b>2015</b>	83.2%	7.9%	8.9%
<b>2014</b>	81.4%	9.8%	8.8%
<b>2013</b>	68.6%	17.4%	14.0%
<b>2012</b>	77.5%	7.8%	14.7%

## State Five-Year Adjusted Cohort Graduation Rates:

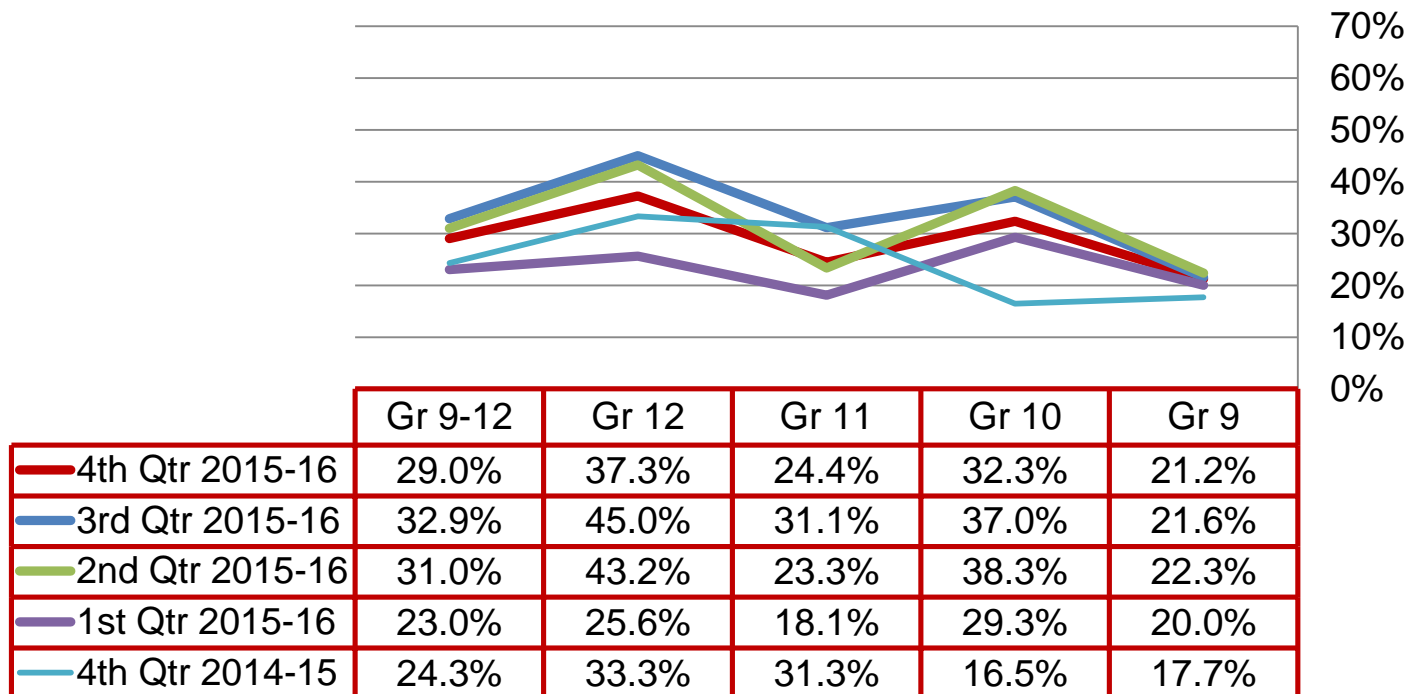
The methodology for this rate is the same as above but with a longer time period. This rate offers some students extra time to remain enrolled in school and graduate with a regular high school diploma.

<u>Year</u>	<u>Graduates 5-Year Rate</u>	<u>Non-Graduates Still Enrolled</u>	<u>Non-Graduates Other</u>
<b>2012</b>	81.6%	0.9%	17.4%

# Quarterly Data

## High Grades

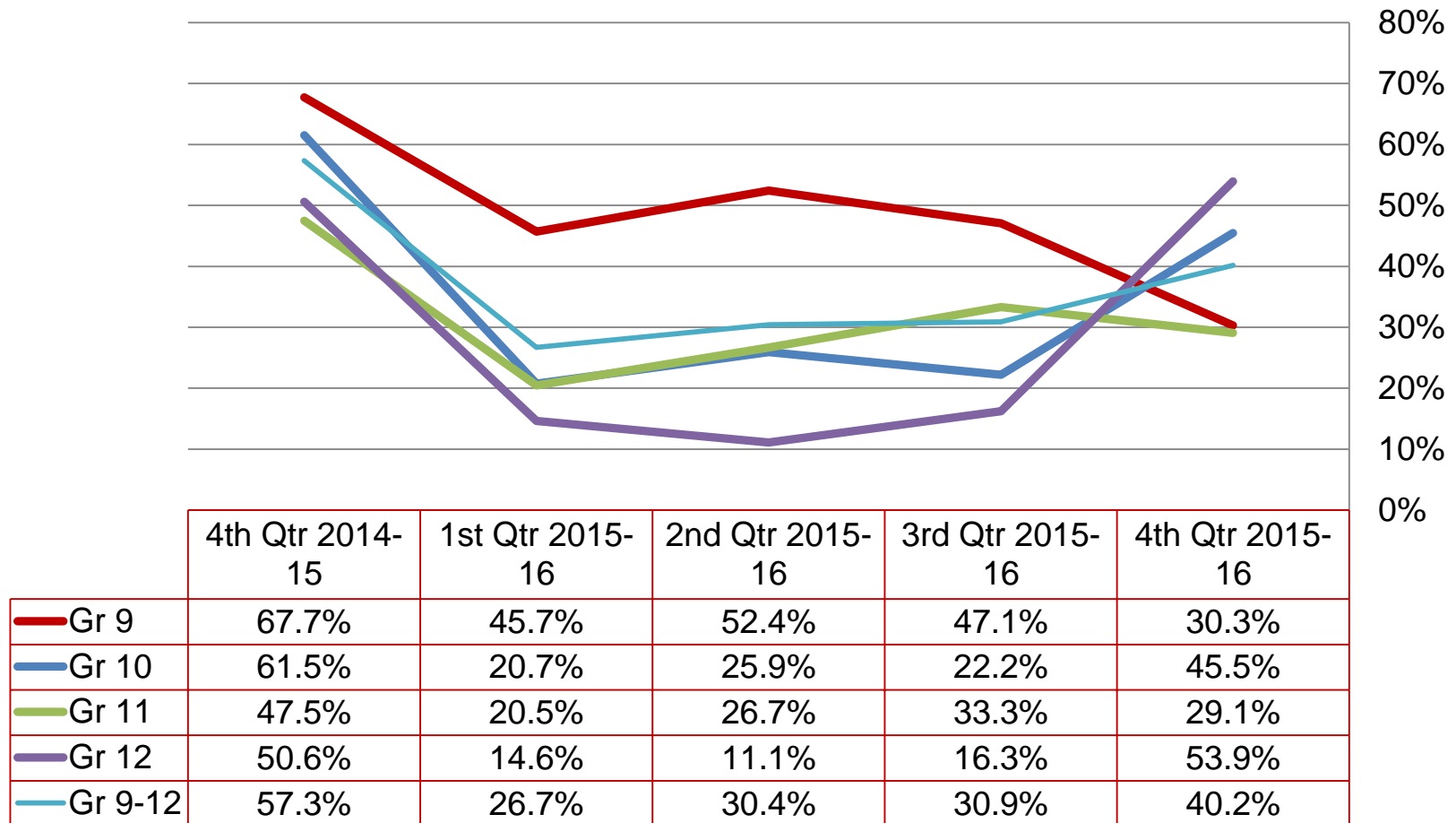
Percent of students earning 80% or above in all courses regardless of academic level:



## Failing Grades

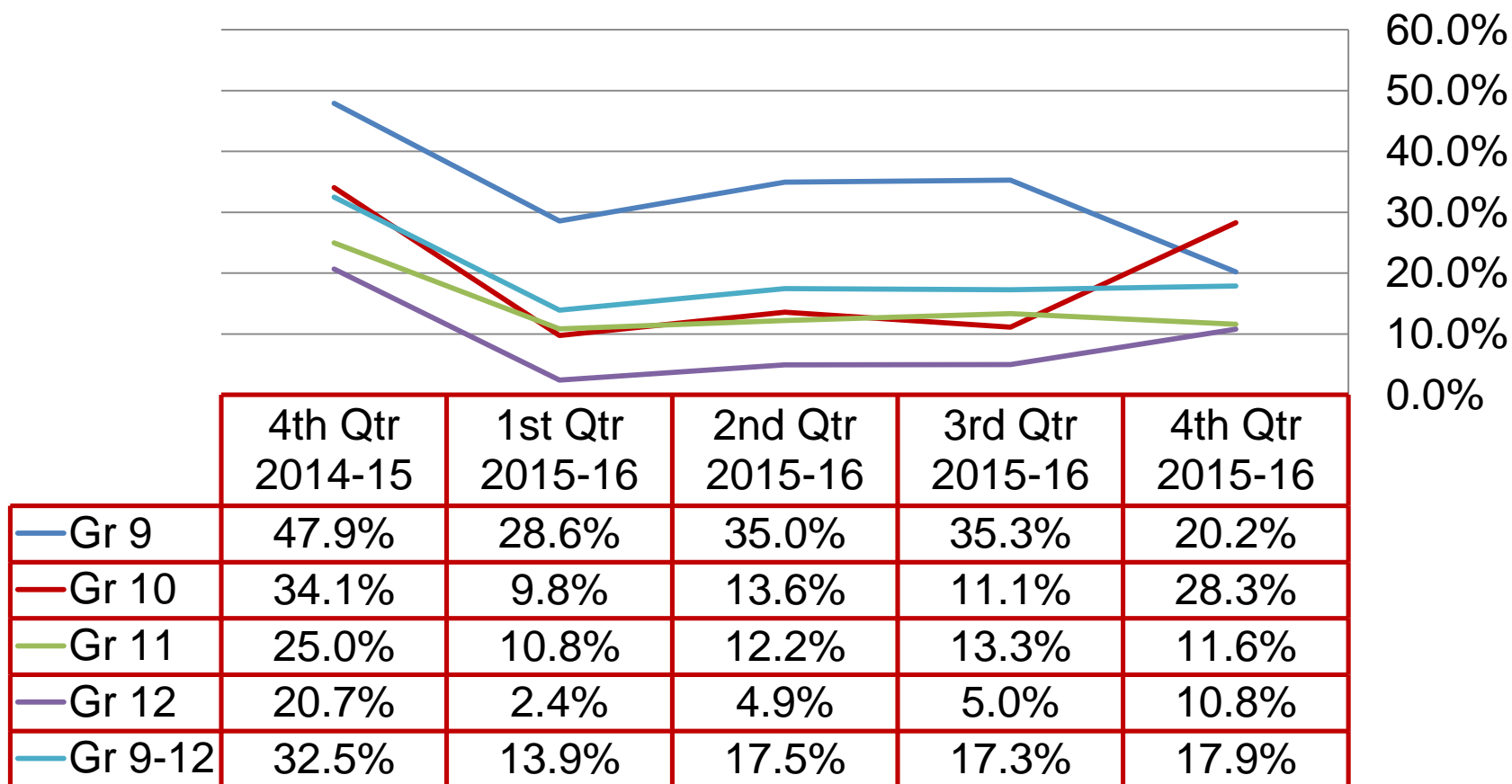
Derby High School

Percent of students with at least one course below a 65%:



## Failing Grades

Percent of students with at least two courses below a 65%:



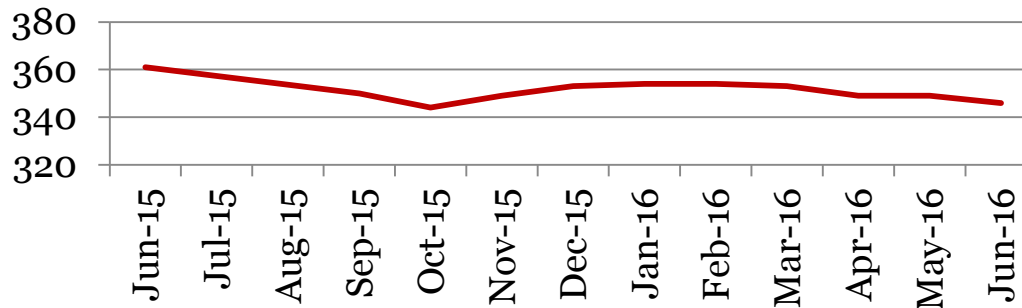
# Monthly Data

Derby High School

## Enrollment – 1<sup>st</sup> of the month

	9	10	11	12	Total
<b>Jun-16</b>	98	81	90	77	<b>346</b>
<b>May-16</b>	99	81	91	78	<b>349</b>
<b>Apr-16</b>	100	80	91	78	<b>349</b>
<b>Mar-16</b>	102	81	90	80	<b>353</b>
<b>Feb-16</b>	103	81	90	80	<b>354</b>
<b>Jan-16</b>	103	79	90	82	<b>355</b>
<b>Dec-15</b>	105	83	83	82	<b>353</b>
<b>Nov-15</b>	103	83	82	81	<b>349</b>
<b>Oct-15</b>	101	82	80	81	<b>344</b>
<b>Sep-15</b>	105	83	81	81	<b>350</b>
<b>Jun-15</b>	101	91	82	87	<b>361</b>

## Total School Enrollment

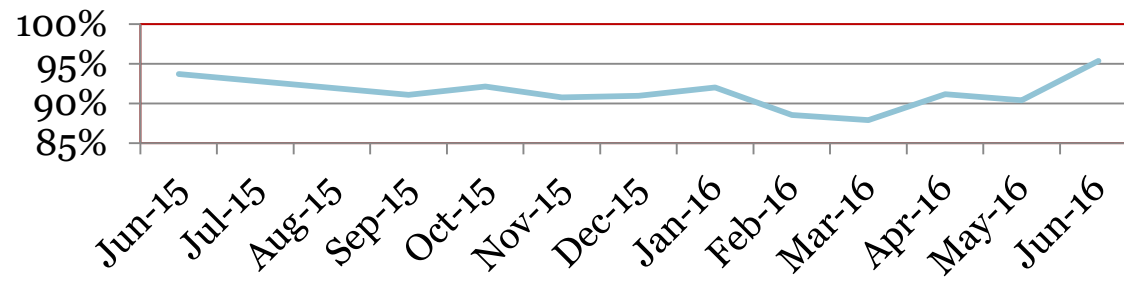


## Attendance – Students

Average daily percent present:

	9	10	11	12	Total
<b>Jun-16</b>	92	96	95	100	<b>95</b>
<b>May-16</b>	87	94	92	89	<b>90</b>
<b>Apr-16</b>	90	94	92	89	<b>91</b>
<b>Mar-16</b>	86	91	87	88	<b>88</b>
<b>Feb-16</b>	86	91	89	89	<b>89</b>
<b>Jan-16</b>	88	95	94	92	<b>92</b>
<b>Dec-15</b>	90	91	93	90	<b>91</b>
<b>Nov-15</b>	88	91	94	91	<b>91</b>
<b>Oct-15</b>	89	91	95	95	<b>92</b>
<b>Sep-15</b>	87	91	93	95	<b>91</b>
<b>Jun-15</b>	90	94	95	94	<b>94</b>

### Total Student Attendance





### Tardies Average daily percent tardy:

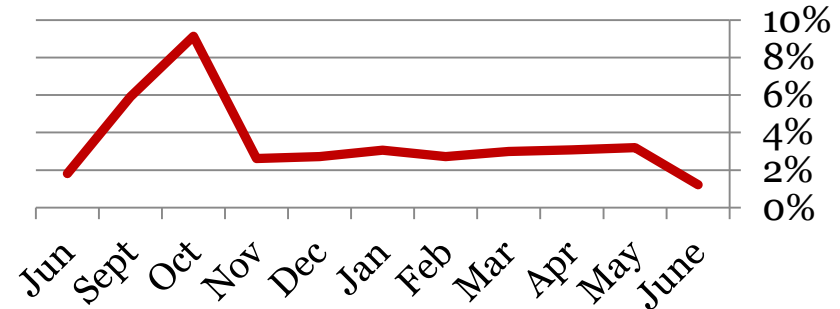
	9	10	11	12	Total
June-16	1	2	1	1	1
May-16	4	3	3	4	3
Apr-16	3	2	3	4	3
Mar-16	3	3	3	3	3
Feb-16	3	2	2	3	3
Jan-16	3	3	5	2	3
Dec -15	3	3	2	3	3
Nov -15	3	2	2	3	3
Oct-15	10	8	9	9	9
Sept-15	6	5	7	6	6
Jun-15	2	2	1	2	2

### Tardies: Number of students tardy 5 or more days:

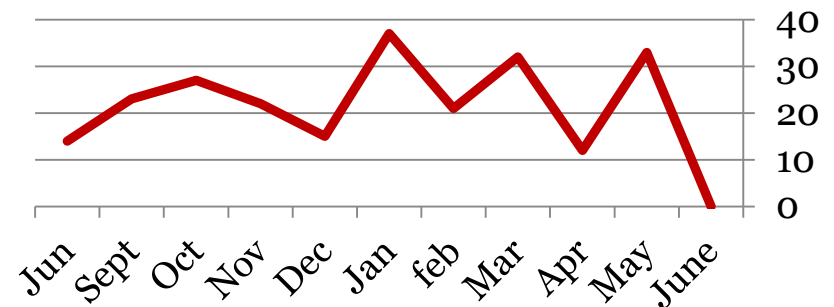
	9	10	11	12	Total
June-16	0	0	0	0	0
May-16	11	4	10	8	33
Apr-16	5	2	3	2	12
Mar-16	11	7	6	8	32
Feb-16	7	3	5	6	21
Jan-16	6	2	27	2	37
Dec-15	8	3	1	3	15
Nov-15	8	2	4	8	22
Oct-15	9	6	7	5	27
Sept-15	8	6	4	5	23
Jun-15	3	4	5	2	14

Derby High School

#### Total Student Tardies



#### # Students over Threshold

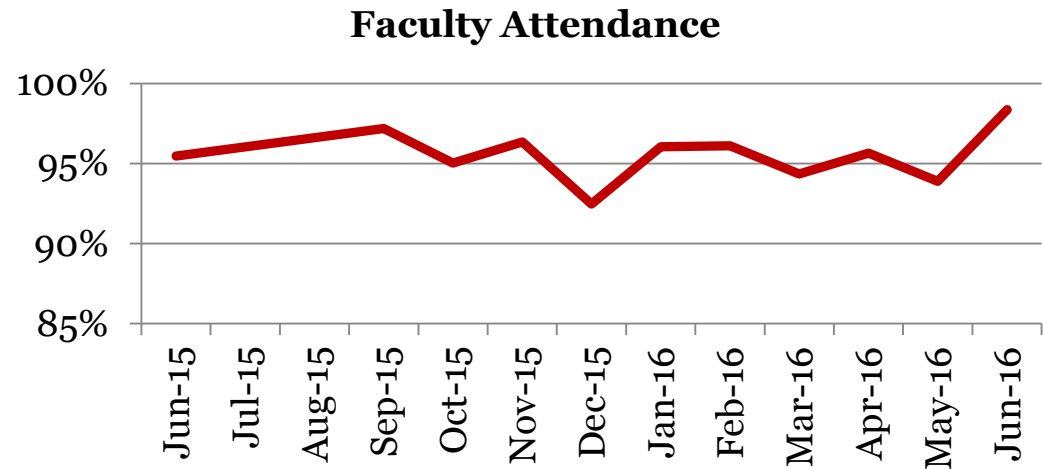


## Attendance – Faculty

Average daily percent present:

Derby High School

	Total
June-16	98
May-16	94
Apr-16	96
Mar-16	94
Feb-16	96
Jan-16	96
Dec-15	92
Nov-15	96
Oct-15	95
Sep-15	97
Jun-15	95



*\*This indicator reflects certified staff and does not include absences created by class trips, professional development, workman's comp and FMLA. However % may be reduced due to long term illness beyond FMLA.*

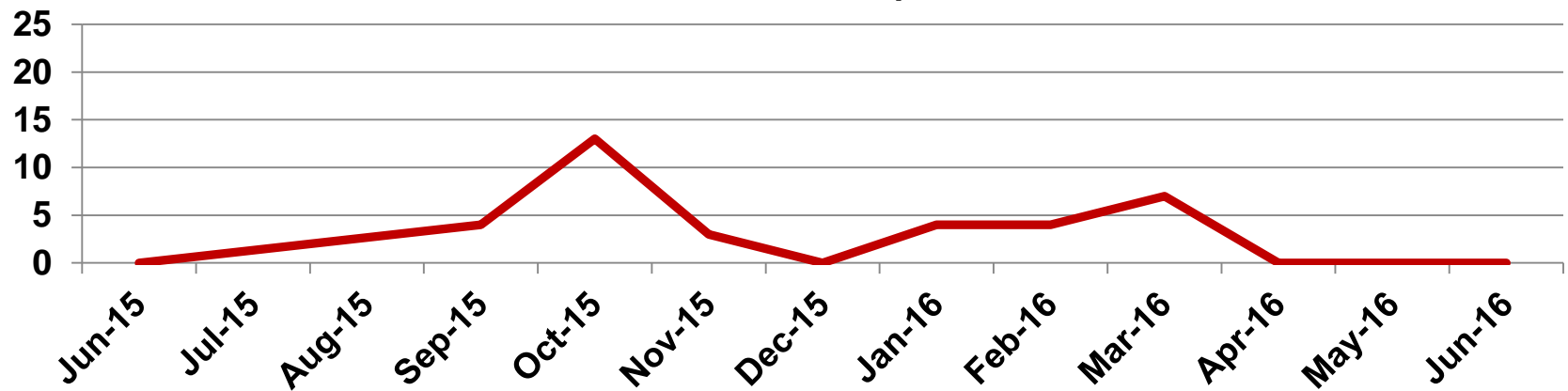
## Suspensions – Out of School

Derby High School

Number of student suspensions (total days of suspension):

	9		10		11		12		Total	
<b>Jun-16</b>	0	(0)	0	(0)	0	(0)	0	(0)	<b>0</b>	<b>(0)</b>
<b>May-16</b>	0	(0)	0	(0)	0	(0)	0	(0)	<b>0</b>	<b>(0)</b>
<b>Apr-16</b>	1	(10)	0	(0)	0	(0)	0	(0)	<b>1</b>	<b>(10)</b>
<b>Mar-16</b>	3	(22)	1	(10)	1	(3)	2	(12)	<b>7</b>	<b>(47)</b>
<b>Feb-16</b>	1	(2)	0	(0)	2	(12)	1	(2)	<b>4</b>	<b>(16)</b>
<b>Jan-16</b>	2	(11)	0	(0)	0	(0)	2	(2)	<b>4</b>	<b>(13)</b>
<b>Dec-15</b>	0	0	0	(0)	0	(0)	0	(0)	<b>0</b>	<b>(0)</b>
<b>Nov-15</b>	1	(10)	0	(0)	2	(4)	0	(0)	<b>3</b>	<b>(11)</b>
<b>Oct-15</b>	3	(9)	10	(2)	0	(0)	0	(0)	<b>13</b>	<b>(11)</b>
<b>Sep-15</b>	1	(10)	1	(5)	2	(20)	0	(0)	<b>4</b>	<b>(35)</b>
<b>Jun-15</b>	0	(0)	0	(0)	0	(0)	0	(0)	<b>0</b>	<b>(0)</b>

**Total Out of School Suspensions**

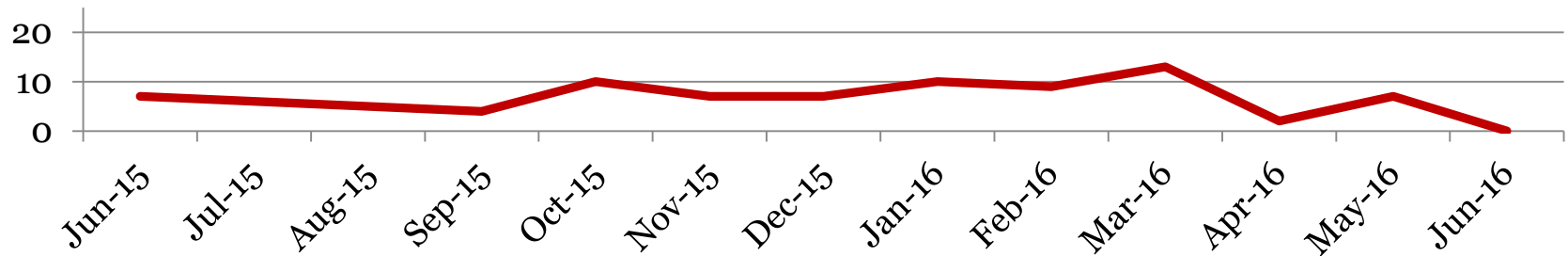


## Suspensions – In School

Number of student suspensions (total days of suspension):

	9		10		11		12		Total	
<b>Jun-16</b>	0	(0)	0	(0)	0	(0)	0	(0)	<b>0</b>	<b>(0)</b>
<b>May-16</b>	6	(7)	0	(0)	0	(0)	1	(1)	<b>7</b>	<b>(8)</b>
<b>Apr-16</b>	0	(0)	1	(1)	0	(0)	1	(2)	<b>2</b>	<b>(3)</b>
<b>Mar-16</b>	2	(2)	2	(3)	2	(2)	7	(13)	<b>13</b>	<b>(20)</b>
<b>Feb-16</b>	4	(6)	3	(4)	0	(0)	2	(2)	<b>9</b>	<b>(12)</b>
<b>Jan-16</b>	8	(9)	0	(0)	2	(3)	0	(0)	<b>10</b>	<b>(12)</b>
<b>Dec-15</b>	5	(7)	0	(0)	2	(3)	0	(0)	<b>7</b>	<b>(10)</b>
<b>Nov-15</b>	4	(4)	0	(0)	1	(1)	2	(3)	<b>7</b>	<b>(8)</b>
<b>Oct-15</b>	7	(8)	1	(1)	2	(2)	0	(0)	<b>10</b>	<b>(11)</b>
<b>Sep-15</b>	1	(1)	1	(2)	1	(1)	1	(1)	<b>4</b>	<b>(5)</b>
<b>Jun-15</b>	3	3	2	2	2	2	0	0	<b>7</b>	<b>(7)</b>

**Total In School Suspensions**



## Newly Enrolled Students

	9	10	11	12	Total
<b>June-16</b>	0	0	0	0	<b>0</b>
<b>May-16</b>	0	1	1	1	<b>3</b>
<b>Apr-16</b>	0	1	0	0	<b>1</b>
<b>Mar-16</b>	0	0	1	0	<b>1</b>
<b>Feb-16</b>	0	1	1	0	<b>2</b>
<b>Jan-16</b>	1	2	0	0	<b>3</b>
<b>Dec-15</b>	3	1	1	0	<b>5</b>
<b>Nov-15</b>	3	1	2	1	<b>7</b>
<b>Oct-15</b>	3	1	3	0	<b>7</b>
<b>Sep-15</b>	5	2	1	3	<b>11</b>
<b>Summer-15</b>	1	0	0	0	<b>1</b>
<b>Jun-15</b>	1	0	0	0	<b>1</b>

## Departing Students

Students who have left the school during the month for any reason:

	9	10	11	12	Total
<b>June-16</b>	3	0	0	0	<b>3</b>
<b>May-16</b>	1	1	2	0	<b>4</b>
<b>Apr-16</b>	1	0	0	0	<b>1</b>
<b>Mar-16</b>	2	1	0	1	<b>4</b>
<b>Feb-16</b>	1	1	1	0	<b>3</b>
<b>Jan-16</b>	1	0	1	2	<b>4</b>
<b>Dec-15</b>	0	1	0	1	<b>2</b>
<b>Nov-15</b>	1	2	0	0	<b>3</b>
<b>Oct-15</b>	0	0	2	1	<b>3</b>
<b>Sep-15</b>	6	10	1	1	<b>18</b>
<b>Summer-15</b>	1	1	0	0	<b>2</b>
<b>Jun-15</b>	2	0	0	0	<b>2</b>

## Dropouts

Derby High School

Student who discontinue schooling, leave for a GED program/Job Corp, or are disenrolled by grade level.

	9	10	11	12	Total
<b>June-16</b>	0	0	0	0	<b>0</b>
<b>May-16</b>	0	1	2	0	<b>3</b>
<b>April-16</b>	0	1	0	0	<b>1</b>
<b>Mar-16</b>	1	0	1	0	<b>2</b>
<b>Feb-16</b>	0	0	1	0	<b>1</b>
<b>Jan-16</b>	0	0	0	0	<b>0</b>
<b>Dec-15</b>	0	1	0	0	<b>1</b>
<b>Nov-15</b>	0	0	2	0	<b>2</b>
<b>Oct-15</b>	1	0	1	1	<b>3</b>
<b>Sept 2015</b>	0	0	1	1	<b>2</b>
<b>Summer-15</b>	0	0	0	0	<b>0</b>
<b>Jun-15</b>	0	0	0	1	<b>1</b>