

Construction Update



April 30, 2024
School Board Meeting

Presented by
Jim Langevin, Facilities & Safety Manager



St. Louis Park
Public Schools

Purpose

To provide an update regarding construction projects.

1. Senior High
2. Yet-to-be-named building next to Grounds Shop
3. Central Community Center



Senior High Additions & Renovations

- Progress Photos
- Restroom Update
 - Renovation
 - Additional gender inclusive restrooms

Track & Field



Track & Field



Track & Field



Media Center



Media Center



Media Center



Media Center

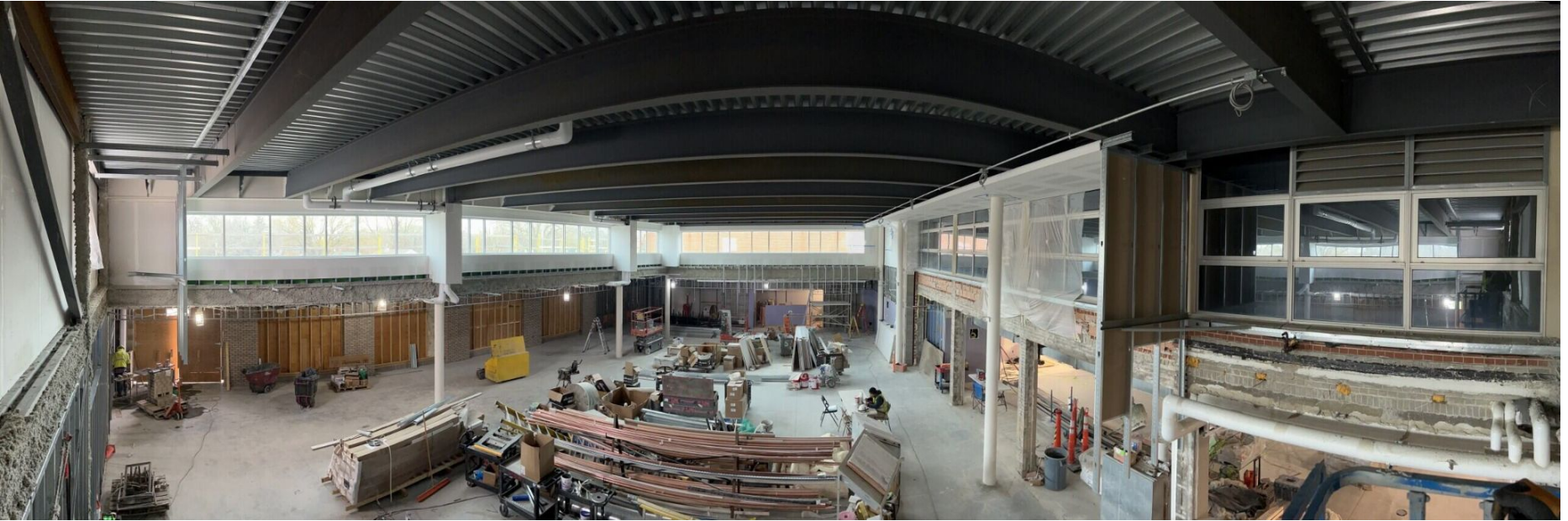


Link



St. Louis Park
Public Schools

Cafeteria



Storm Shelter



High School Restroom Renovation Timeline

Summer of 2024

- Gender inclusive restroom suite - as part of the cafeteria renovation, 18 gender inclusive restrooms have been added.
- C wing 3rd floor - Mens and Womens (refresh)
- B wing 3rd floor - Mens (refresh) New 4-6 inclusive restrooms

Summer of 2025

- A wing 3rd floor - Mens and Womens (refresh)
- A wing 2nd floor - Mens(refresh) and New 4 -6 inclusive restrooms
- B wing 2nd floor - Mens and Womens (refresh)

Summer 2026

- Dakota Foyer 1st floor - Mens and Womens (refresh)
- C wing 1st floor (refresh)



Gender Inclusive Restrooms

Suite of gender inclusive restrooms being added

- 18 stand-alone restrooms as part of the cafeteria renovation, will be open for start of school 2024/2025

Remodel includes a standard 1 to 1 fixture replacement/remodel

- Adding gender inclusive restrooms in 3rd floor B-wing using available non-classroom space.
 - need to maintain current fixture count. State code requirement
 - adding gender inclusive restrooms in other areas would require elimination of a classroom to gain enough square footage required to keep the fixture count the same

Gender Inclusive Suite



Gender Inclusive Suite



Gender Inclusive Suite



Gender Inclusive Suite



Potential Gender Inclusive Restroom Design



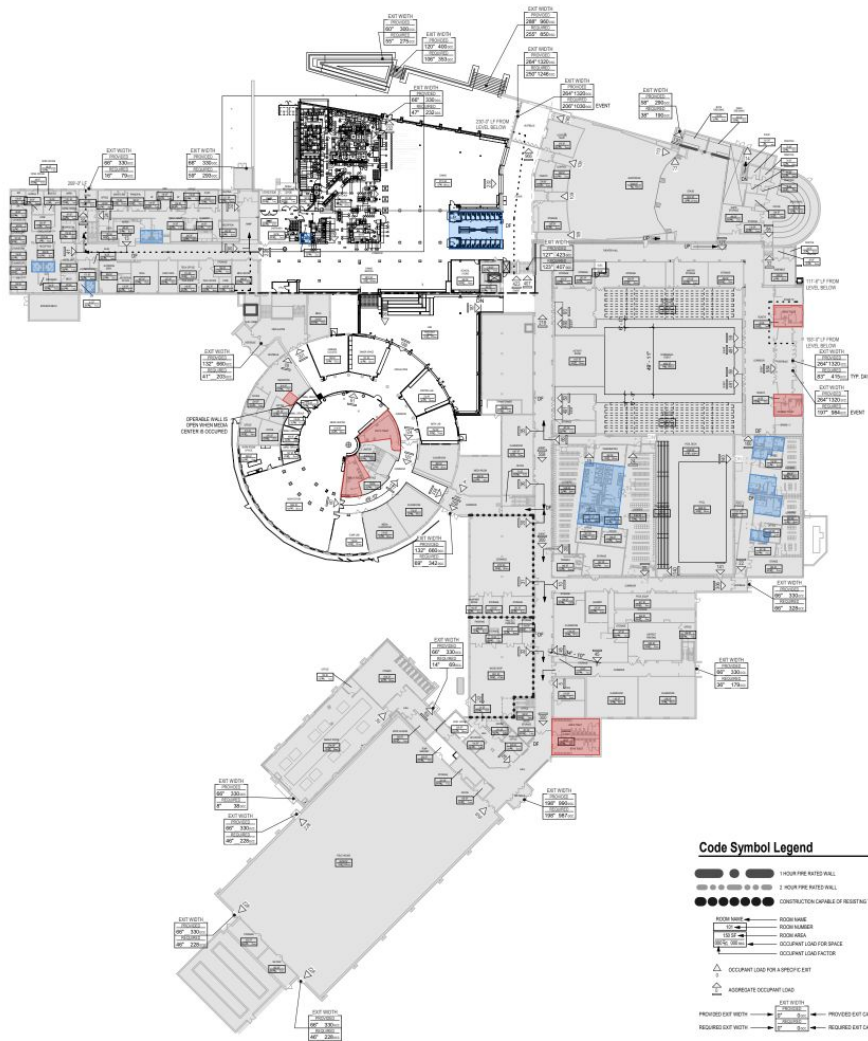
Potential Gender Inclusive Restroom Design



Potential Gender Inclusive Restroom Design



St. Louis Park
Public Schools



- EXISTING RESTROOM TO RENOVATE
- PROPOSED INCLUSIVE RESTROOMS
- NEW OR RECENTLY RENOVATED RESTROOMS

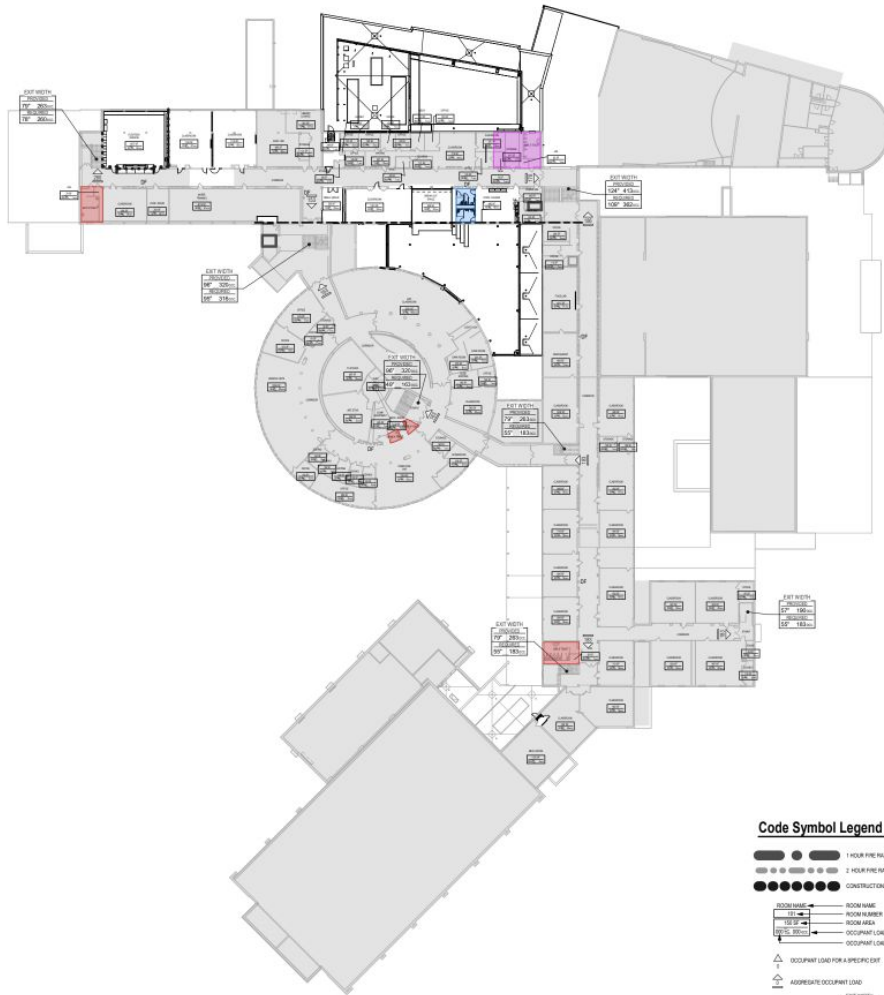
High School Level 1

Code Symbol Legend

- 1-HOUR FIRE RATED WALL
- 2-HOUR FIRE RATED WALL
- 3-HOUR FIRE RATED WALL
- CONSTRUCTION CAPABLE OF RESISTING THE PASSAGE OF SMOKE
- ROOM NAME
- ROOM NUMBER
- ROOM WALL
- OCCUPANT LOAD FOR SPACE
- OCCUPANT LOAD FACTOR
- OCCUPANT LOAD FOR A SPECIFIC EXIT
- ADEQUATE OCCUPANT LOAD
- PROVIDED EXIT WIDTH
- REQUIRED EXIT WIDTH
- PROVIDED EXIT CAPACITY
- REQUIRED EXIT CAPACITY



**St. Louis Park
Public Schools**



- EXISTING RESTROOM TO RENOVATE
- PROPOSED INCLUSIVE RESTROOMS
- NEW OR RECENTLY RENOVATED RESTROOMS

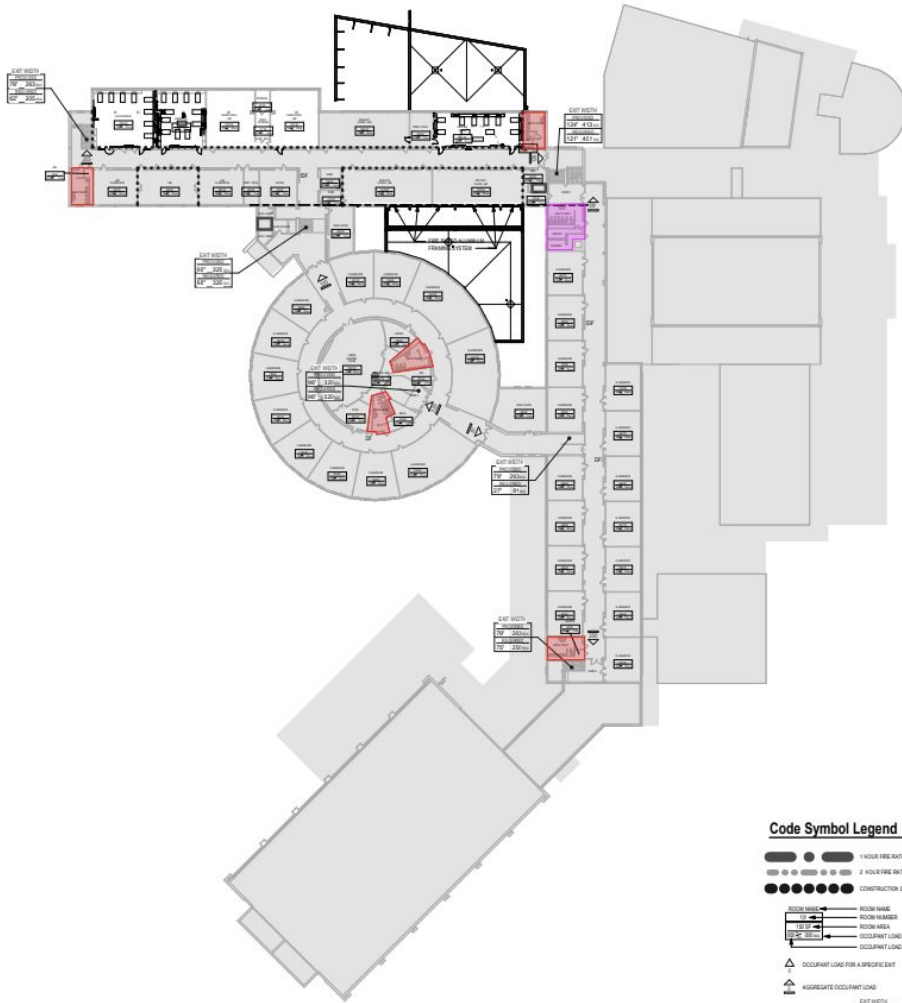
High School Level 2

Code Symbol Legend

- 1 HOUR FIRE RATED WALL
- 2 HOUR FIRE RATED WALL
- CONSTRUCTION ORANGE OF RESISTING THE PASSAGE OF SMOKE
- | | |
|-------------------------|-------------------------|
| ROOM NAME | ROOM NAME |
| ROOM NUMBER | ROOM NUMBER |
| ROOM AREA | ROOM AREA |
| OCCUPANT LOAD FOR SPACE | OCCUPANT LOAD FOR SPACE |
| OCCUPANT LOAD FACTOR | OCCUPANT LOAD FACTOR |
- OCCUPANT LOAD FOR A SPECIFIC EXIT
- AGGREGATE OCCUPANT LOAD
- | | | |
|---------------------|------------|------------------------|
| PROVIDED EXIT WIDTH | EXIT WIDTH | PROVIDED EXIT CAPACITY |
| REQUIRED EXIT WIDTH | EXIT WIDTH | REQUIRED EXIT CAPACITY |



**St. Louis Park
Public Schools**



- EXISTING RESTROOM TO RENOVATE
- PROPOSED INCLUSIVE RESTROOMS
- NEW OR RECENTLY RENOVATED RESTROOMS

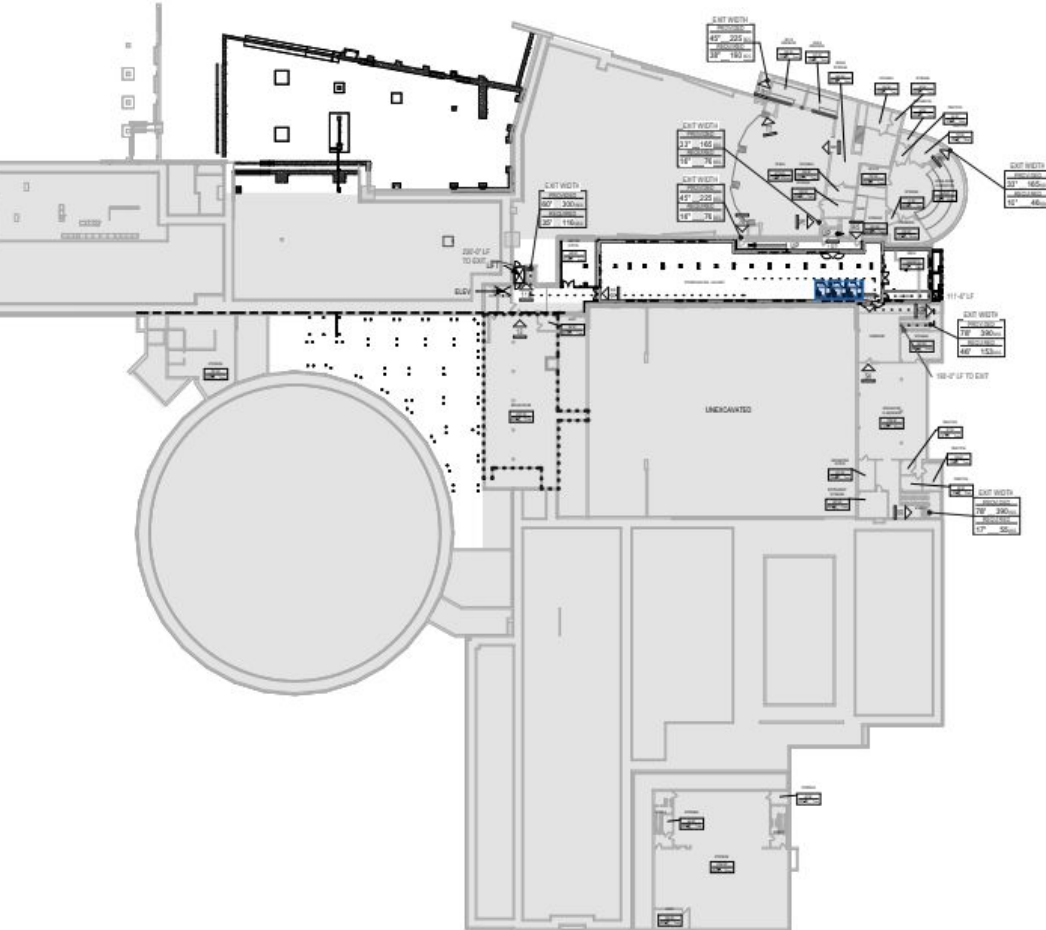
High School Level 3

Code Symbol Legend

- 1 HOUR FIRE RATED WALL
- 1 HOUR FIRE RATED WALL
- CONSTRUCTION CAPABLE OF RESISTING THE PREDICAMENT OF SMOKE
- | | |
|-------------------------|-------------------------|
| ROOM NAME | ROOM NAME |
| ROOM NUMBER | ROOM NUMBER |
| ROOM AREA | ROOM AREA |
| OCCUPANT LOAD FOR BRACE | OCCUPANT LOAD FOR BRACE |
| OCCUPANT LOAD FACTOR | OCCUPANT LOAD FACTOR |
- OCCUPANT LOAD FOR A SPECIFIC EXIT
- AGGREGATE OCCUPANT LOAD
- | | | | |
|---------------------|---------------|---------------------|------------------------|
| PROVIDED EXIT WIDTH | OCCUPANT LOAD | EXIT WIDTH | PROVIDES EXIT CAPACITY |
| REQUIRED EXIT WIDTH | OCCUPANT LOAD | REQUIRED EXIT WIDTH | REQUIRES EXIT CAPACITY |



**St. Louis Park
Public Schools**



- EXISTING RESTROOM TO RENOVATE
- PROPOSED INCLUSIVE RESTROOMS
- NEW OR RECENTLY RENOVATED RESTROOMS

High School Basement

“yet to be named” building by Grounds Shop



“yet to be named” building by Grounds Shop





Sowles Co
STEEL ERECTORS
SOWLES CONSTRUCTION COMPANY
INCORPORATED

Sowles Co

Vertical banner text, partially obscured and difficult to read.

“yet to be named” building by Grounds Shop



Central Community Center

south parking lot - begins in late June

Next Steps

- School board names the “yet to be named” building

