

Phase I and II Facilities Expansion September 29, 2017

The Becker School District student enrollment is projected to show continued growth. A review of instructional space capacity at the Becker Primary and Intermediate Schools was conducted in conjunction with ICS. The Director of Business Services, The Superintendent, Building Principals, and The Director of Buildings and Grounds participated in the review.

The following instructional spaces were identified as additional classrooms, which can be made available at the **Intermediate School**:

1. The Sherburne Northern Wright Special Education Cooperative's Foundations program moved to Monticello in the fall of 2017. The space previously occupied by the program can provide 2 classrooms (one used in 2017-18, both will be used in 2018-19).
2. Subdividing the space currently utilized for reading intervention materials could be divided and used for 2 or 3 classrooms. This would require some remodeling.
3. The locker room space could be remodeled and used for a classroom.

The **Primary School** is at maximum capacity with no available space for additional classrooms.

Creating additional space to accommodate the continued enrollment growth can be addressed in two phases:

Phase I

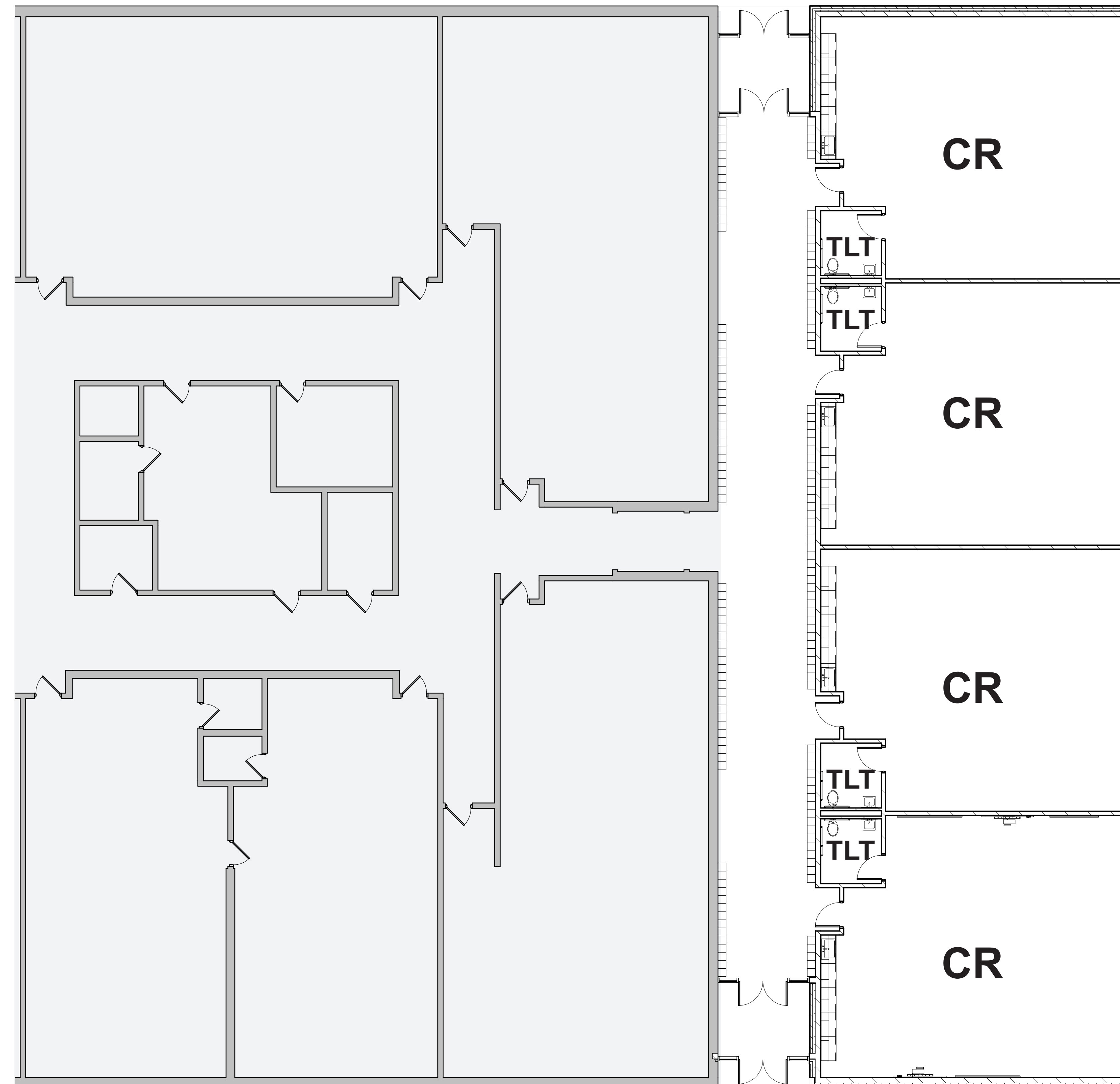
- A 4-classroom addition should be added to the East side of the Primary School. The addition can be financed through a lease levy. The lease levy will result in minimal levy increase. Construction can be completed in the Summer of 2018.

Phase II

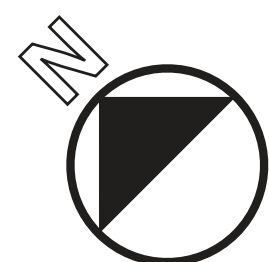
- The storage area in the transportation and grounds building site can be remodeled to be a gym area for the Primary School. That would make the current gym space available for food service, effectively doubling the size of the lunchroom. Currently, Primary School lunch service begins and ends later than is ideal for young children. The additional space would allow more flexibility with lunch period making it possible for lunch times to be closer to noon as enrollment grows. The additional gym space would accommodate continued enrollment growth.

- New construction and/or remodeling at the existing transportation site would accommodate the Early Childhood programs, currently located in the Primary School. The current Early Childhood space can be remodeled and provide up to 6 additional classrooms for the Primary School.
- The transportation program would be relocated off of our current campus.
- Phase II would be contingent upon a successful bond election in the fall of 2023. The bond election would be tax neutral due to the expiration of bonds issued in 2013.

Primary School - Classroom Addition



**New Addition
= 6,900 SF**



	Enrollment History (ADM)					Current ADM	Projected Enrollment (ADM)				
	2012-13	2013-14	2014-15	2015-16	2016-17	2017-18	2018-19	2019-20	2020-21	2021-22	2022-23
PK-12	2,732	2,722	2,739	2,802	2,846	2,851	2,909	2,943	2,972	2,990	3,019
		-10	17	63	44	5	58	34	29	18	29