



WOODRIDGE
SCHOOL DISTRICT 68



Willow Creek Elementary School

SCHOOL IMPROVEMENT UPDATE | December 15, 2025

Meet our school improvement team

- Kurt Kramer (Principal)
- Jen Eugea (Social worker)
- Cassie Graff (Instructional coach)
- Sabrina Hector (Music teacher)
- Danielle Hernandez (Interventionist)
- Kathy Keogh (6th grade teacher)
- Gia MacKenzie (Learning Behavior Specialist)
- Megan Payumo (2nd grade teacher)



Our mission & vision

INSPIRING EDUCATION AND INNOVATION

In partnership with family and community, Woodridge School District 68 will provide a comprehensive educational foundation for all children in a safe, caring environment, preparing them to be productive, responsible, and successful members of society.



Learning intentions for tonight

Learning Target

- We are learning to understand Willow Creek's school improvement plan.

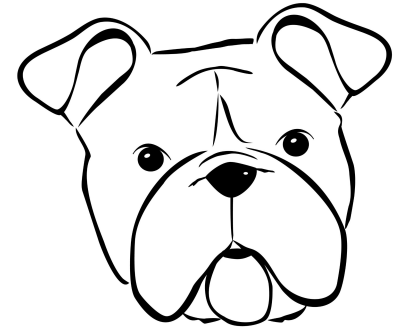
Success Criteria

- I can explain the Willow Creek SIP goals for the 2025-26 school year.
- I can identify the different ways Willow Creek is highlighting their accomplishments.

School improvement goals

METHODS AND MOTIVATION

- Throughout the 2025-26 school year we will focus on continuing to strengthen collective efficacy through teacher empowerment by providing teacher leadership opportunities. This will result in 90% of teachers joining or leading a committee
- By the end of the 2025–2026 school year, K–6 students will improve their Numbers and Operations Skills resulting in higher iReady scores, due to regularly engaging in math instruction that fosters critical thinking, problem-solving, and mathematical reasoning.



Rationale for SIP goals

METHODS AND MOTIVATION

Collective Efficacy

We recognize that empowered teachers create empowered learners. Strengthening collective efficacy means fostering a culture where educators feel valued, supported, and confident in their ability to make an impact.

"Because of our consistent collaboration, we have been able to generate new ideas to help all students, effectively implement co-teaching strategies, and quickly adjust lesson plans/teacher roles as needed."

- Toni Konys

Math Engagement

At Willow Creek, we believe that strong foundational math skills open the door to deeper learning and problem solving across all content areas.

"I like it because I get to show off what I know, but do it in my own way. I like being able to share how I do it because I am really good at math!" -Tyler

"I like being able to work with a partner everyday, and I get to explain to my partner how to do it. If they are confused I can teach them how I did it, and I like doing that." -Ryan

Collective Efficacy

THE WHY

- Hattie's Visible Learning scale measures the impact of educational practices on student achievement, showing how different teaching methods or other factors help students learn. Anything above 0.4 being a proven way to make a real difference.
- We use collective efficacy as a school goal because John Hattie's research in *Visible Learning* identifies it as the most impactful factor on student achievement, with a high effect size of 1.57, placing it well within the zone of desired effects.

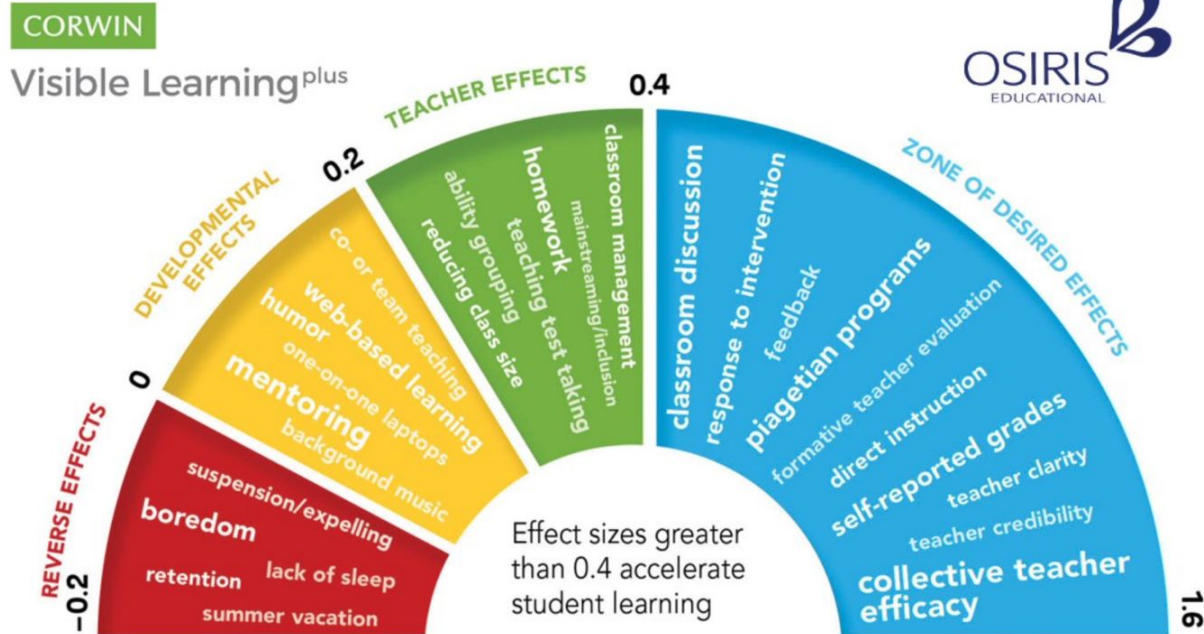
VISIBLE LEARNING
A SYNTHESIS OF OVER 800 META-ANALYSES
RELATING TO ACHIEVEMENT

"Reveals teaching's Holy Grail"
The Times Educational Supplement



Collective Efficacy

ZONE OF DESIRED EFFECTS



Collective Efficacy

THE HOW

Empowered teachers

- Committees
 - Neurodiversity
 - Inclusivity
 - Bulldog Bunch
 - Recess/Lunch
 - Bulldog Boosters
- Input on School Improvement Goals
- Push for district involvement
- Impact Teams

Teacher Leadership



NEURODIVERSITY NEWSLETTER



NOVEMBER 2025

What We Learned

Positive Quote

"I don't 'suffer' from dyslexia, I live with it and work with it. I suffer from the ignorance of people who think they know what I can and cannot do."

—Erica Cook

Building Connections

- Celebrate strengths beyond reading. Cheer on small wins!
- Provide a choice & voice. Offer options for students to draw ideas, use speech to text, and share answers orally!

Common Dyslexia Myths

- Students with dyslexia are less intelligent
- Audiobooks or text-to-speech are "cheating"
- Dyslexia means seeing letter backwards
- If a student can read well, they don't have dyslexia.

What is Dyslexia?

Dyslexia is a learning difference that affects how the brain processes written language. It can make reading, spelling, and decoding words more challenging.

Suggested Read Alouds

- Thank You, Mr. Falker - Patricia Polacco
- Fish in a Tree - Lynda Mullaly Hunt
- The Alphabet War - Diane Burton Robb

Classroom Supports

Multisensory Teaching Strategies
Sand tray for letter formation
Magnetic letters
Tapping out syllables
Color Coding

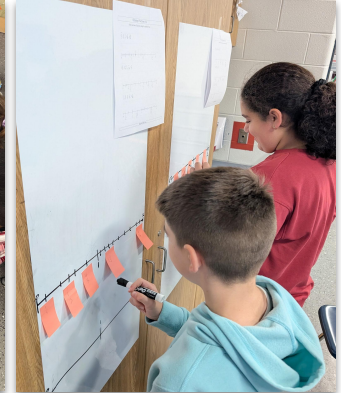
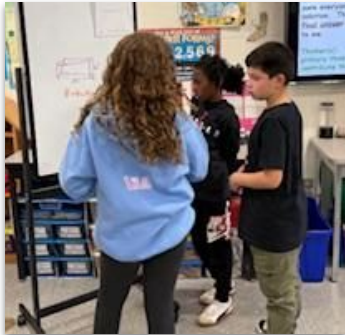
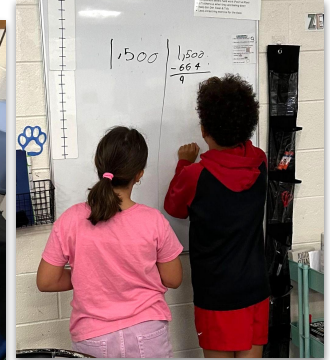


Math Engagement

THE HOW

- Focus on implementation of new math curriculum
- SAM Club
 - Enhance mathematical discourse
- Impact Teams
- Planning days - strengthen understanding of units
- Differentiated Engagement Block (DEB)
- School-wide math engagement day

Math Engagement



Service projects


STUDENT COUNCIL AND OTHERS

Candy Drive

WILLOW CREEK
ELEMENTARY
STUDENT COUNCIL
IS PARTNERING WITH
SOLDIER'S ANGELS TO
COLLECT LEFTOVER
HALLOWEEN CANDY
FOR OUR TROOPS.



Veterans Day



WILLOW CREEK ELEMENTARY
SCHOOL PRESENTS

ANNUAL
VETERANS DAY
Assembly

A Student Council, PTO, and
Choir event to celebrate our
veterans.

Please use the following link to sign a Veteran up
to be recognized at this event.
<https://forms.gle/pK9ds9LncKLMxnZZ7> (Click here)

TUESDAY
NOVEMBER 11, 2025
9:00 AM

Any Veteran coming to the assembly must bring a
State ID to enter the school. Veterans must show up
at 8:45 AM to be checked into the front office.

DRINKS & SNACKS WILL BE SERVED AT A
RECEPTION AFTER THE ASSEMBLY



Food Drive

GIVE THANKS AND GIVE BACK

November 5th - 19th

MOST NEEDED ITEMS

Pancake mix * cereal * oatmeal

Canned fruits and vegetables *

Boxed potato mix * Canned tuna or chicken

Boxed dinners (mac & cheese, Hamburger Helper)



Transitions program

SPECIALIZED INSTRUCTION

- K-3 students focused on intensive social skills and communication instruction
- Maintain academic pacing/rigor while extending time in general education classroom
- Teachers, families, and related service providers working together to support students' individualized needs
- The goal: maximize independence and involvement in general education
- High success rate back into general education classroom

Learning intentions for tonight

HOW DID WE DO?

- I can explain the Willow Creek SIP goals for the 2025-26 school year.
- I can identify the different ways Willow Creek is highlighting their achievements.



Thank You!

QUESTIONS?

