



Finance & Operations Dashboard

May 28, 2026





April Financials

April - Revenues YTD

Combined and All Funds	FY26 Budget	FY26 Actuals	Over / (Under)	%
Local Property Taxes	\$ 18,171,196	\$ 18,130,658	\$ (40,538)	99.8%
CPPRT	\$ 50,000	\$ 31,238	\$ (18,762)	62.5%
Interest Income	\$ 1,022,798	\$ 866,404	\$ (156,394)	84.7%
Other Local Revenues	\$ 349,500	\$ 384,901	\$ 35,401	110.1%
State Revenues	\$ 4,084,150	\$ 3,406,106	\$ (678,044)	83.4%
Federal Revenues	\$ 1,973,500	\$ 1,778,291	\$ (195,209)	90.1%
Combined Operating Total	\$ 25,651,144	\$ 24,597,598	\$ (1,053,546)	95.9%
Fund 30 Debt Service Fund	\$ 1,122,698	\$ 1,128,113	\$ 5,415	100.5%
Fund 50: SS/Medicare	\$ 444,326	\$ 445,471	\$ 1,145	100.3%
Fund 55: IMRF	\$ 214,501	\$ 216,671	\$ 2,170	101.0%
Fund 60: Capital Outlay	\$ 1,150,000	\$ 900,000	\$ (250,000)	78.3%
Fund 70: Working Cash	\$ 26,101	\$ 18,314	\$ (7,787)	70.2%
Fund 80: Tort/Judgement Fund	\$ 293,441	\$ 293,298	\$ (143)	100.0%
Fund 90: Health/Life Safety	\$ 100	\$ 97	\$ (3)	97.1%
*TOTAL ALL Funds	\$ 28,902,311	\$ 27,599,561	\$ (1,302,750)	95.5%



April – Expenditures YTD

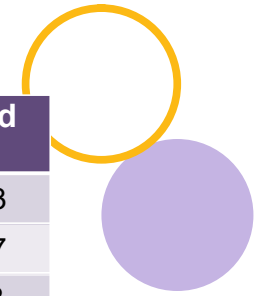
Combined and All Funds	FY26 Budget	FY26 Actuals	Over / (Under)	%
Salaries	\$ 16,105,023	\$ 11,563,051	\$ (4,541,972)	72%
Benefits	\$ 3,239,130	\$ 2,373,542	\$ (865,588)	73%
Purchased Services	\$ 4,509,950	\$ 3,671,382	\$ (838,568)	81%
Supplies	\$ 1,696,300	\$ 1,308,344	\$ (387,956)	77%
Capital Outlay	\$ 108,500	\$ 43,205	\$ (65,295)	40%
Other Objects	\$ 2,551,450	\$ 2,563,873	\$ 12,423	100%
Non-Capital Outlay	\$ 199,500	\$ 71,430	\$ (128,070)	36%
Combined Operating Total	\$ 28,409,853	\$ 21,594,827	\$ (6,815,026)	76%

Fund 30: Debt Service Fund	\$ 1,105,000	\$ 1,106,520	\$ 1,520	100%
Fund 50: Social Security/Medicare	\$ 394,950	\$ 289,561	\$ (105,389)	73%
Fund 55: IMRF	\$ 141,000	\$ 113,367	\$ (27,633)	80%
Fund 60: Capital Outlay	\$ 1,850,000	\$ 1,829,134	\$ (20,866)	99%
Fund 70: Working Cash	\$ 450,000	\$ 450,000	\$ -	100%
Fund 80: Tort/Judgement Fund	\$ 196,650	\$ 184,298	\$ (12,352)	94%
Fund 90: Health/Life Safety	\$ -	\$ -	\$ -	
*TOTAL ALL Funds	\$ 32,547,453	\$ 25,567,707	\$ (6,979,746)	79%

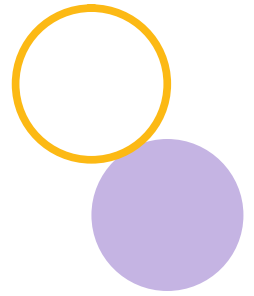
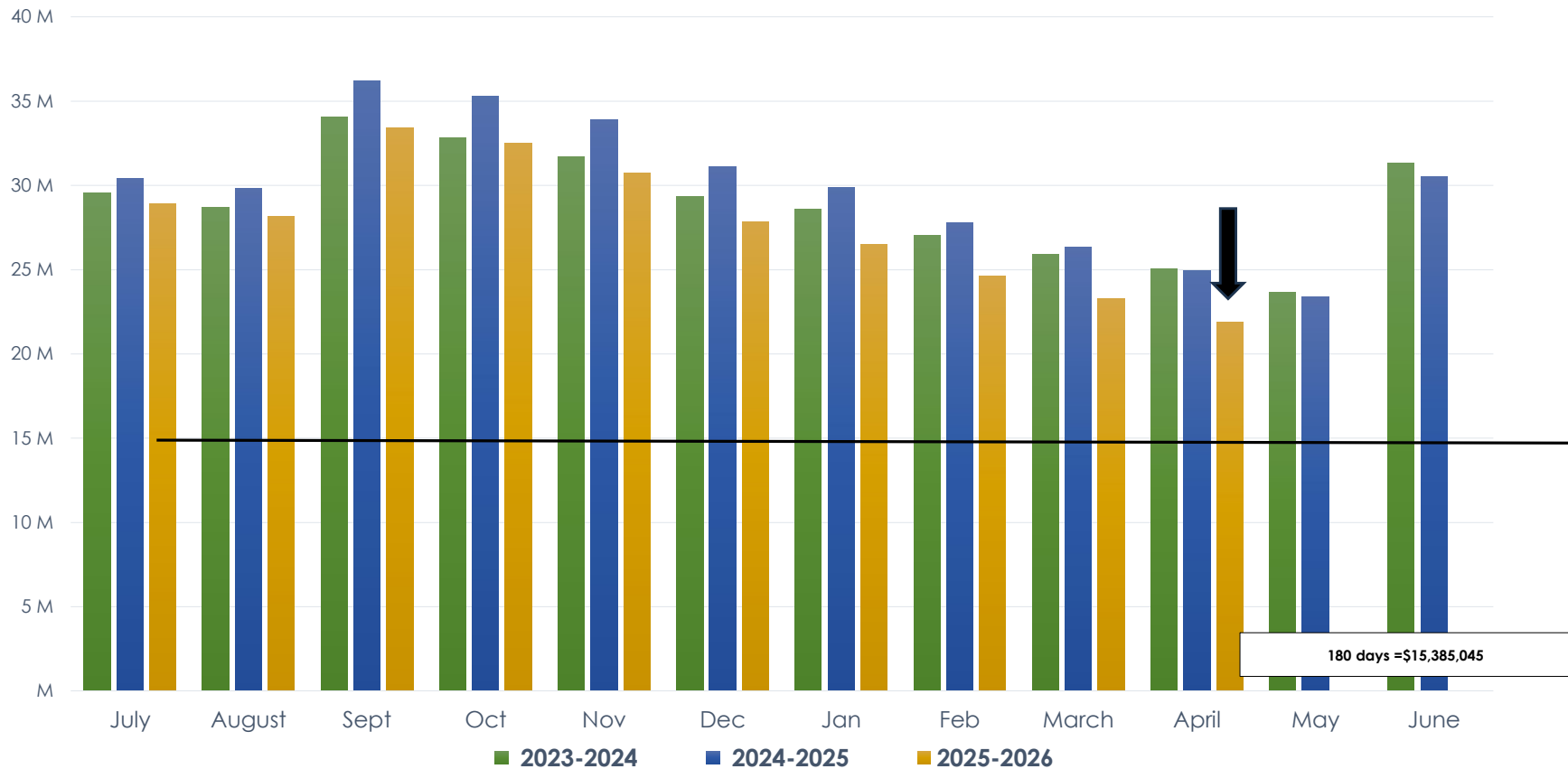
April – Fund Balance

Fund	Beginning Fund Balance 7/1/2025	FY26 YTD Revenues	FY26 YTD Expenditures	Transfers	Ending Fund Balance
10 - Education Fund	\$ 13,251,125	\$ 20,167,478	\$ (17,660,100)	\$ -	\$ 15,758,503
20 - O & M Fund	\$ 1,520,874	\$ 2,483,214	\$ (1,756,771)	\$ (450,000)	\$ 1,797,317
30 - Debt Service Fund	\$ 97,818	\$ 1,128,113	\$ (1,106,520)	\$ -	\$ 119,412
40 - Transportation Fund	\$ 1,919,235	\$ 1,496,906	\$ (1,277,957)	\$ -	\$ 2,138,185
50 - Social Security/Medicare	\$ 339,305	\$ 445,471	\$ (289,561)	\$ -	\$ 495,215
55 - IMRF	\$ 283,710	\$ 216,671	\$ (113,367)	\$ -	\$ 387,014
60 - Capital Projects Fund	\$ 1,235,187	\$ -	\$ (1,829,134)	\$ 900,000	\$ 306,054
70 - Working Cash Fund	\$ 1,049,232	\$ 18,314	\$ -	\$ (450,000)	\$ 617,546
80 - Tort Fund	\$ 132,647	\$ 293,298	\$ (184,298)	\$ -	\$ 241,647
90 - Health Life Safety Fund	\$ 4,193	\$ 97	\$ -	\$ -	\$ 4,291
Totals	\$ 19,833,329	\$ 26,249,561	\$ (24,217,707)	\$ -	\$ 21,865,182

Operating Funds - Fund Balance	
Expenditure Budget	\$ 28,242,453
Fund Balance	\$ 21,435,427
Percentage	75.9%
Days on Hand	277

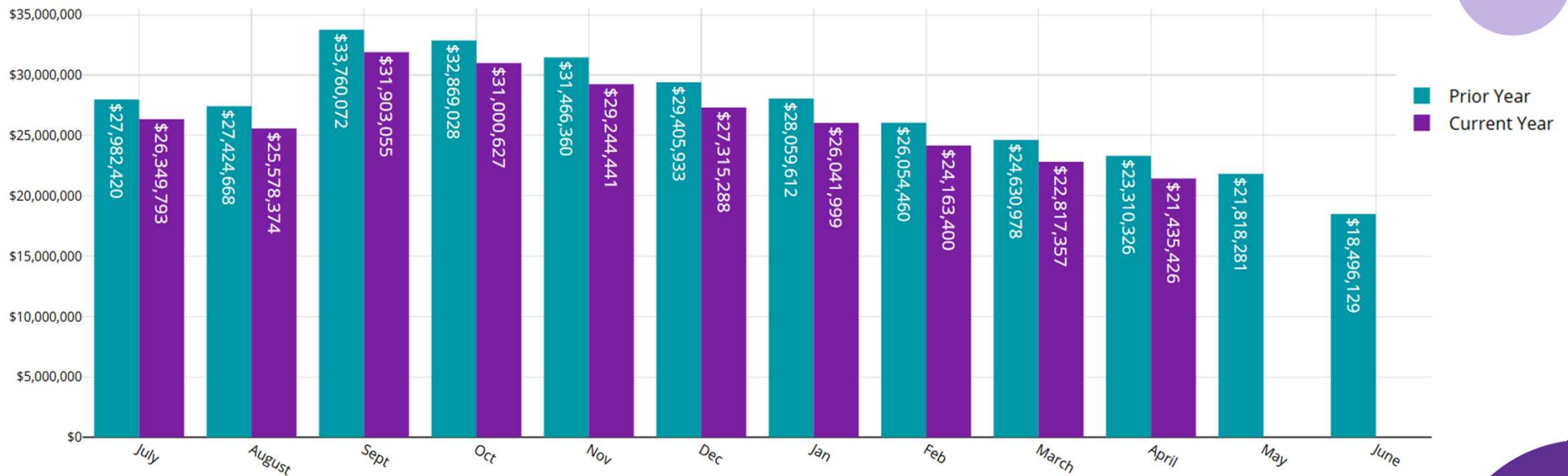


April – Treasury Balance (All Funds)

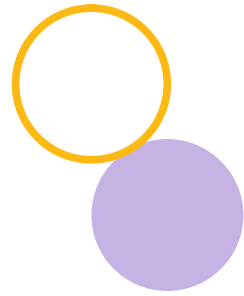
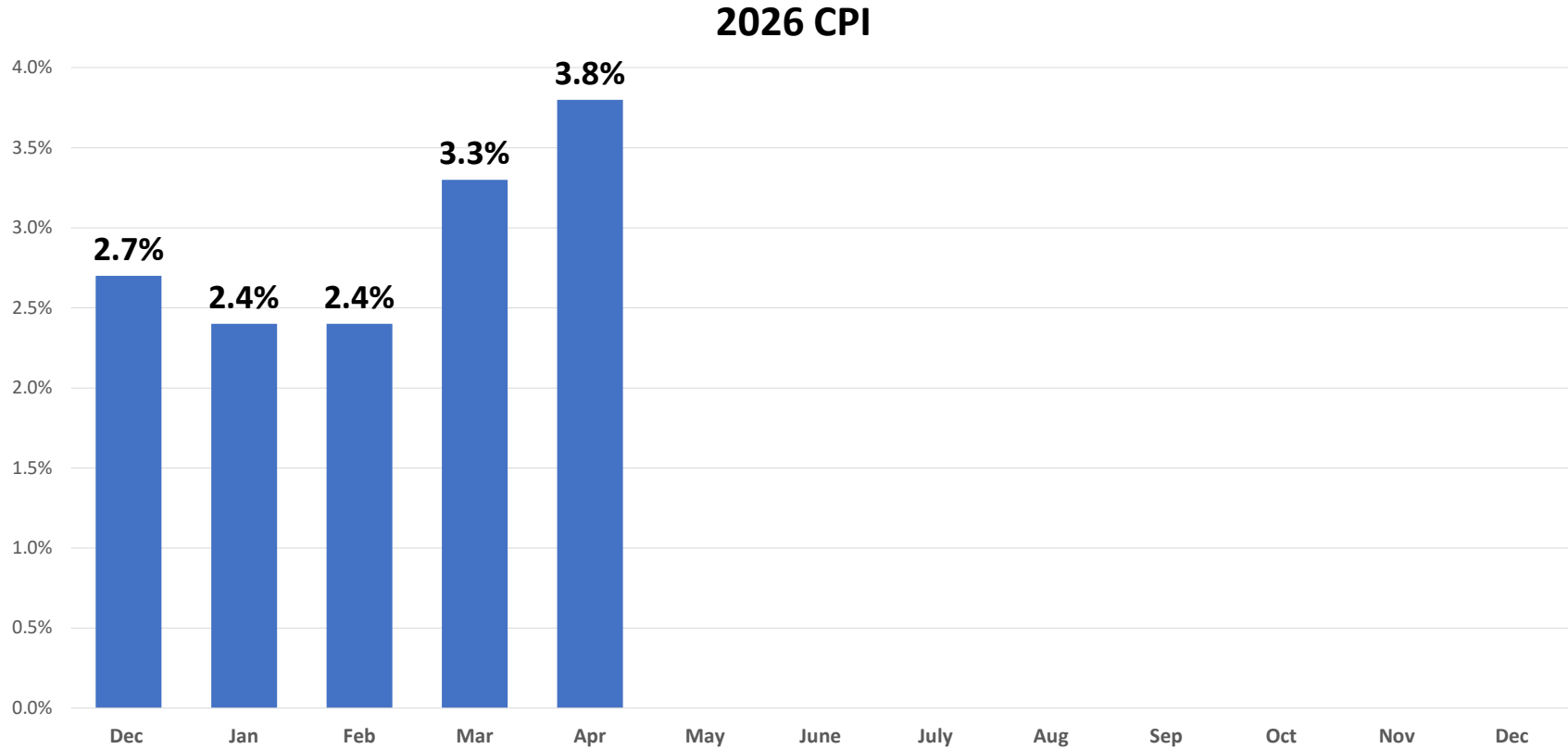


April – Operating Funds

Month-End Balances - Operating Funds



April – CPI





Questions

