

Gatesville Independent School District

Design & Engagement Update

for Potential May 2026 Bond



Purpose of Engagement Process

- **Build Shared Understanding** - Creating a common vision among stakeholders and building a base of community representatives informed of decision-making factors.
- **Prepare for Election** - Laying the groundwork for successful bond initiatives by gathering insights, preferences, and concerns from the community.
- **Ensure Input From All Voices** - Seeking perspectives from across the community to strengthen collective decision-making, build trust, and enhance transparency.

Community Alignment



- ✓ Initial assessments to **gather input** and set clear objectives.
- ✓ Engaging with stakeholders to share ideas and gather **diverse perspectives**.
- ✓ Incorporating feedback to shape proposals and ensure **community alignment**.
 - Presenting refined recommendations to the Board for **final decision-making**.

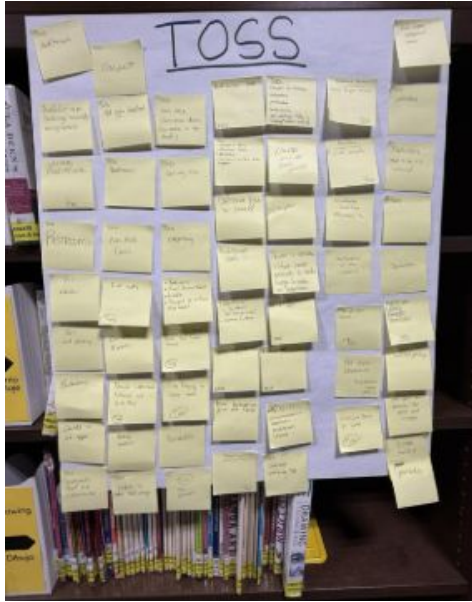
Design Planning

COMMUNITY PRIORITIES

- Types of project to consider
- Design and practical elements
- Consideration of scope and details



Types of Projects to Consider

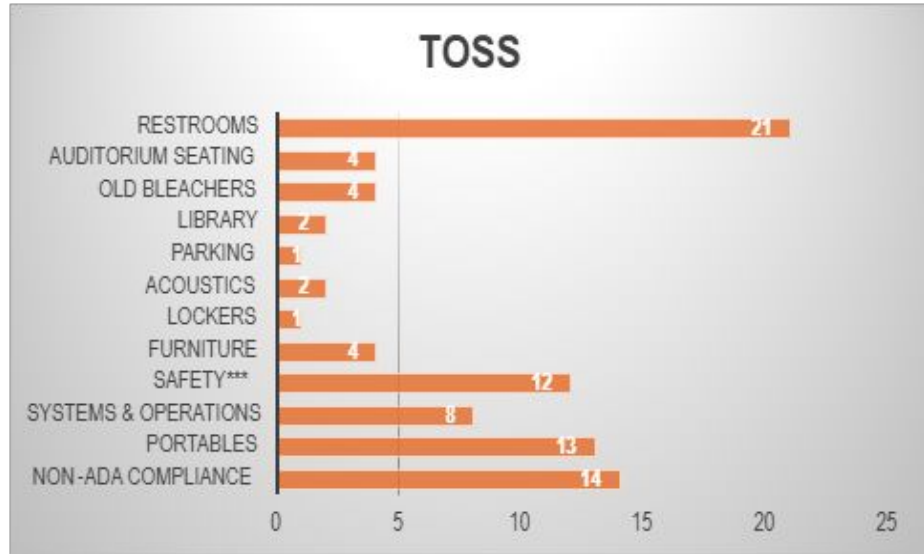
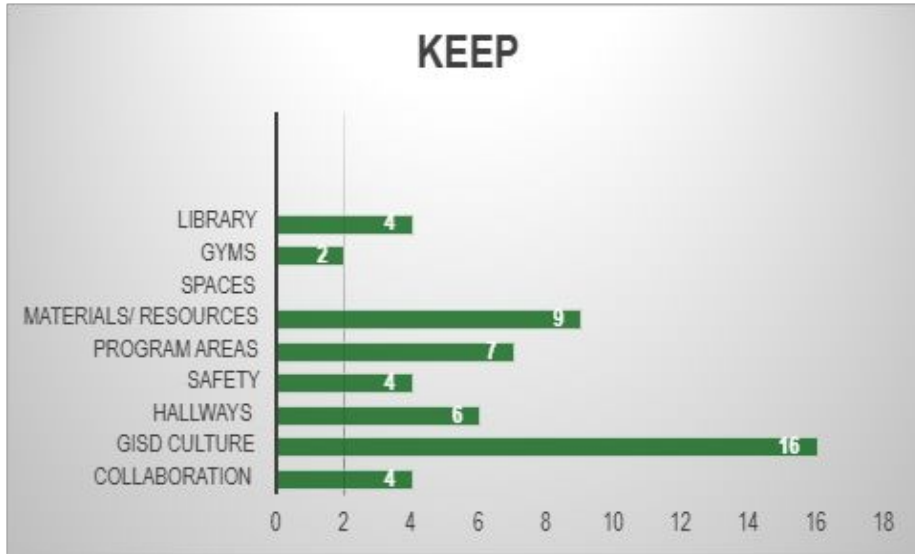


Types of Projects to Consider

TOSS + KEEP + CREATE ACTIVITY PRIORITIZATION											
CREATE (We Want These Items, Don't Yet Have Them, Want to Improve Them)											
Fine Arts Areas*	Staff Restrooms	Staff Lounge	Natural Light	Larger Spaces**	Technology	Awnings & Parking	Offices	Science	SPPED	Add/Improve Locker Rooms	Acoustics
30	14	3	12	11	9	9	3	5	2	12	3
CREATE (We Want These Items, Don't Yet Have Them, Want to Improve Them)											
Layout & Shared Spaces (Collab)	6th Grade Classes	Bleachers & Gym Storage	Calendar	ID Badge Readers	Connections Efficiencies	Expand Café	Student Lounge	Flexible Furniture	Larger Library		
10	2	9	1	2	6	6	2	10	4		
KEEP (We Like It, It Works for Us, It's Important to Us)											
Collaboration	GISD Culture	Hallways	Safety	Program Areas	Materials/ Resources	Spaces	Gyms	Library			
4	16	6	4	7	9		2	4			
TOSS (We Don't Like It, It Doesn't Works for Us, It's No Longer an Important Focus to Us)											
Non-ADA Compliance	Portables	Systems & Operations	Safety***	Furniture	Lockers	Acoustics	Parking	Library	Old Bleacher	Auditorium Seating	Restrooms
14	13	8	12	4	1	2	1	2	4	4	21



Types of Projects to Consider

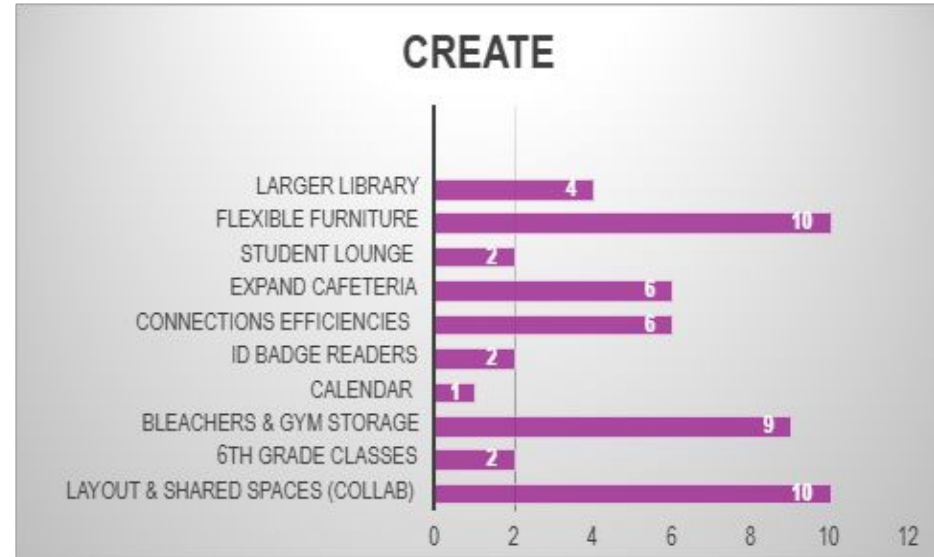
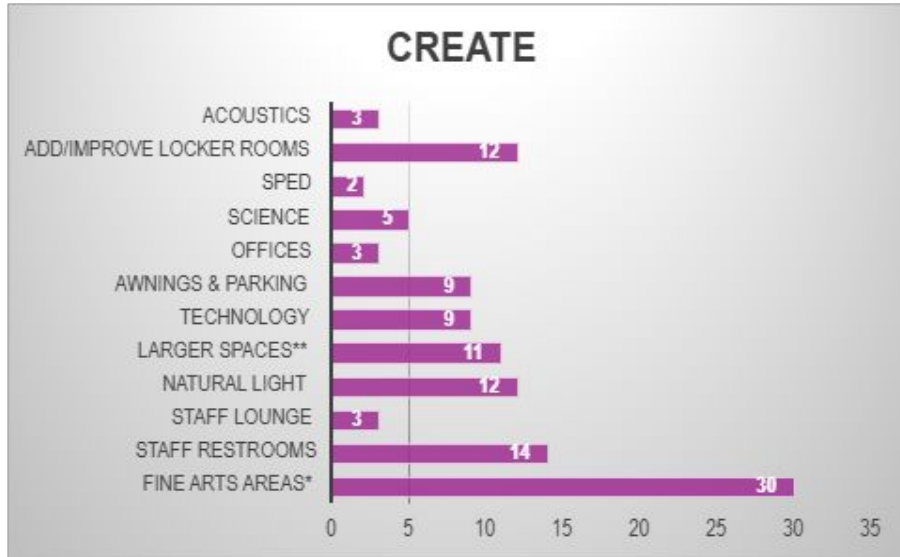


* Larger auditorium to accommodate more students, FA to include 6th grade students; keep kids in one area

** Larger cafeteria and library

*** Students crossing Marshall Street

Types of Projects to Consider



* Larger auditorium to accommodate more students, FA to include 6th grade students; keep kids in one area

** Larger cafeteria and library

*** Students crossing Marshall Street

Design and Practical Elements

Classroom-1 Date: 10/27/2025



Category Feedback

What Users Like

- * Ample natural light from windows
- * Modern furniture
- * Extensive whiteboard space
- * Built-in storage solutions
- * Collaborative learning furniture
- * Height-adjustable desks
- * Collaborative furniture
- * Effective classroom layout
- * Flexible seating options
- * Ample whiteboard space
- * Natural light from windows
- * Comfortable chairs
- * Natural light and windows
- * Taller tables for collaboration
- * Flexible classroom layout

What Users Dislike

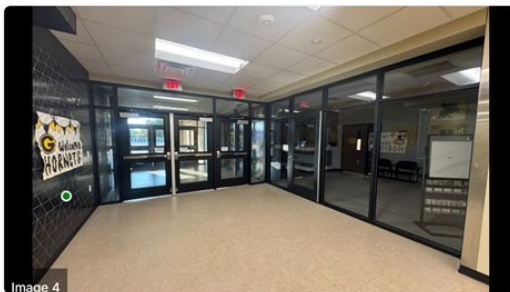
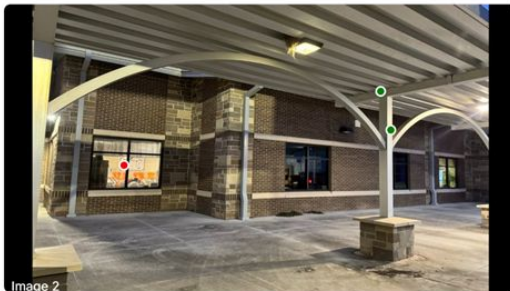
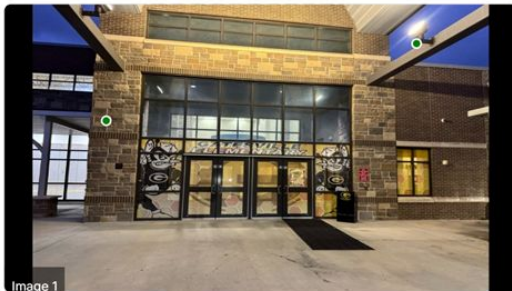
- * Lack of projector or interactive whiteboard
- * Busy carpet design
- * Concerns about posture for older children
- * Furniture perceived as too childish
- * Preference for height-adjustable widescreen monitors

Overall Analysis

Across all images, users consistently appreciated natural lighting, collaborative and flexible furniture, and ample whiteboard space. Critiques mainly focused on the lack of interactive technology, concerns about posture and furniture design for older students, and specific aesthetic preferences such as carpet design. The importance of comfort, functionality, and adaptability in educational spaces was a recurring theme.

Design and Practical Elements

Transparency-1 Date: 10/27/2025



Category Feedback

What Users Like

- Modern exterior design with stone elements
- Bright exterior lighting
- Covered walkways
- Appealing architectural details
- Sleek design with black tiles and doors

What Users Dislike

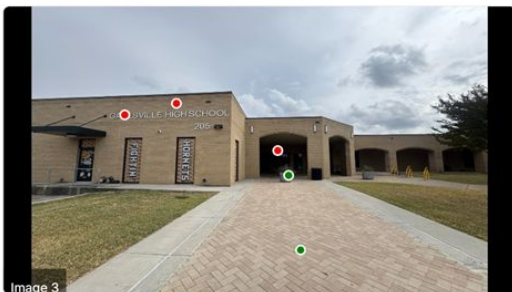
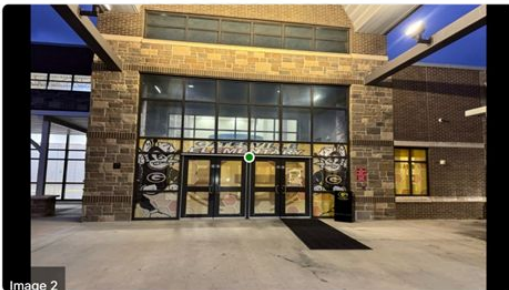
- Need for window coverings or graphics for privacy

Overall Analysis

Across all images, users highlighted architectural appeal, modern design elements, and lighting as positive features. Concerns about privacy (window coverings) were noted for one image. Two images received no negative feedback, and one image had no feedback at all. The patterns suggest a preference for modern aesthetics and functionality in educational spaces.

Design and Practical Elements

Exterior-1 Date: 10/27/2025



Category Feedback

What Users Like

- * Architectural design (non-flat roof)
- * Functional elements (covered walkways)
- * Aesthetics and curb appeal
- * Windows providing natural light
- * Welcoming entrance design
- * Brick walkway
- * Curb appeal
- * Covered sidewalks for students
- * Bike racks for student use
- * Functional design

What Users Dislike

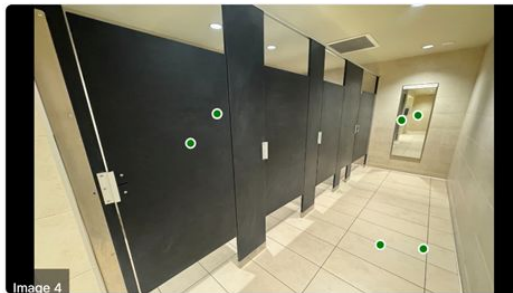
- * Space utilization
- * Preference for darker materials
- * Signage visibility
- * Entrance lighting and inviting atmosphere
- * Desire for more visible renovations

Overall Analysis

Across all images, users consistently valued functional features like walkways, bike racks, windows, and entrances, as well as overall curb appeal. Suggestions for improvement focused on space utilization, material choices, signage visibility, and lighting. Positive sentiment outweighed negative feedback, with most users appreciating the inviting and functional designs of the educational spaces.

Design and Practical Elements

Bathrooms-1 Date: 10/27/2025



Category Feedback

What Users Like

- Privacy between urinals
- Properly closing stall doors
- Soap dispensers over sinks for cleanliness
- Handwashing stations outside bathrooms
- Spacious and functional design
- Presence of water fountains
- School colors
- Roomy and updated restroom design
- Open design with privacy for students
- Modern black doors
- Large tile flooring
- Multiple mirrors for girls
- Full-coverage stall doors

What Users Dislike

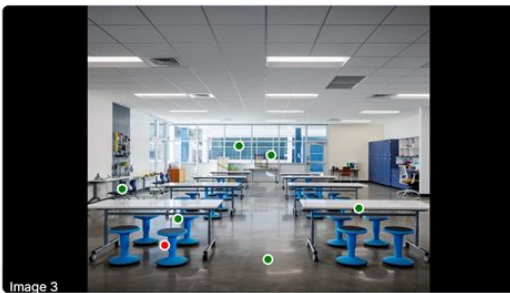
- Paper towels placed too close to the sink
- Split vanities
- Insufficient mirrors
- Challenges in monitoring students
- Concerns about one entrance for both genders

Overall Analysis

Across all images, users consistently appreciated privacy features, modern designs, and functionality in bathroom spaces. Cleanliness and thoughtful layouts were praised, though concerns about monitoring and mirror placement were noted. Images with modern aesthetics and updated designs received the most positive feedback.

Design and Practical Elements

Furniture-1 Date: 10/27/2025



Category Feedback

What Users Like

- * Natural lighting
- * Individual seating without desks in rows
- * Appealing table designs
- * Large windows for natural lighting
- * Convenient sink and paper towels
- * Carpet flooring
- * Versatile tables for flexible learning
- * Collaborative tables
- * Windows for natural lighting
- * Comfortable and functional chairs
- * Dark flooring for practicality

What Users Dislike

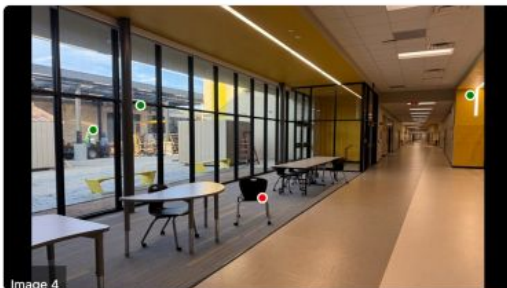
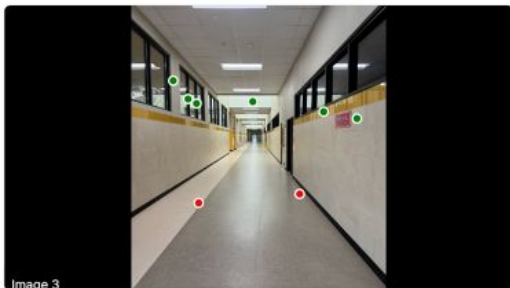
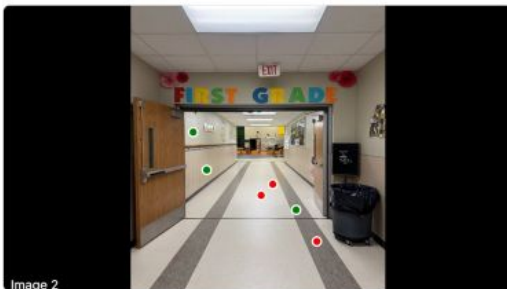
- * Underutilized wall space
- * Privacy concerns with large windows
- * Non-stackable stools with poor posture support
- * Excessive visibility causing distractions
- * Safety and tactical concerns

Overall Analysis

Across all images, users consistently appreciated natural lighting, collaborative and functional furniture, and practical flooring. However, concerns about privacy, safety, and underutilized spaces were common. The feedback highlighted the importance of balancing openness and functionality in educational spaces.

Design and Practical Elements

Hallways-1 Date: 10/27/2025



Category Feedback

What Users Like

- Encouraging student learning through design
- Spacious hallways
- Flexible workspaces in common areas
- Organized student flow with lines
- Neutral paint colors
- Practical flooring choices
- Natural lighting from windows and skylights
- Interior windows for openness
- Color-coded hallways for organization
- Windows for natural light
- Modern lighting
- Common area courtyard for collaboration

What Users Dislike

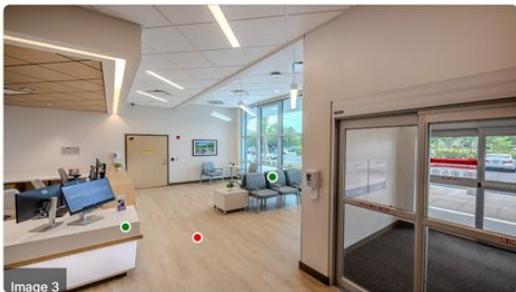
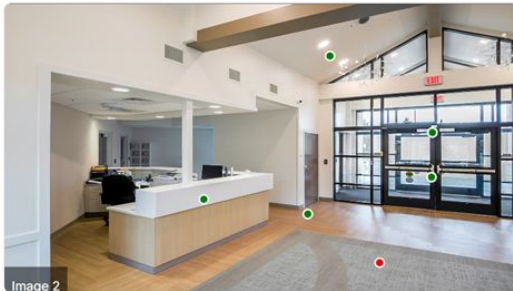
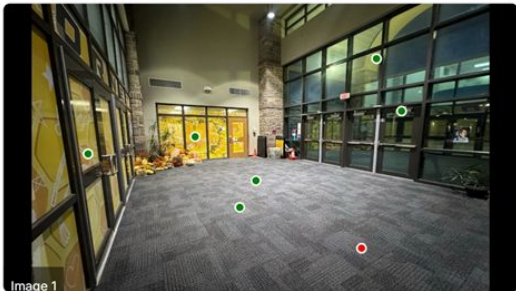
- Concerns about wasted space
- Safety concerns with open pods
- Hallway width concerns
- Preference for collaborative culture
- Separation of departments disliked
- Flooring color concerns
- Safety concerns with long hallways
- Concerns about wasted space

Overall Analysis

Across all images, users consistently valued natural lighting, spaciousness, and features that encourage collaboration and organization, such as flexible workspaces, display areas, and color-coded hallways. However, concerns about wasted space, safety issues with long hallways or open pods, and separation of departments emerged as common dislikes. Practical considerations, such as hallway width and flooring choices, were also highlighted.

Design and Practical Elements

Entry-2 Date: 10/27/2025



Category Feedback

What Users Like

- Privacy-enhancing window graphics
- Natural lighting
- Welcoming and open layout
- Secure entrance design
- Recessed lighting
- Bright and modern furniture
- Open layout
- Abundance of natural light
- Professional and roomy design
- Space for parents waiting for appointments
- Safety-enhancing graphic windows
- School logos
- Open layout
- Secure entrance design

What Users Dislike

- Dislike for carpet flooring
- Dislike for carpet flooring
- Hospital-like appearance
- Confusing entrance layout

Overall Analysis

Across all images, users consistently appreciated elements such as natural lighting, open layouts, secure entrances, and modern aesthetics. Dislikes were primarily focused on flooring choices (carpet), hospital-like appearances, and confusing layouts. Overall, users expressed positive sentiment toward spaces that prioritize functionality, safety, and welcoming design, with minor concerns about specific design choices.

Design and Practical Elements SUMMARY

- Appreciation for **modern design**, **functionality**, and **natural lighting** in educational spaces
- Positive feedback on:
 - **Privacy features**
 - **Cleanliness**
 - **Spaciousness**
 - **Collaborative environments** supporting student learning
- Frequently praised:
 - **Ample whiteboard space**
 - **Flexible seating arrangements** for adaptable learning
- Concerns raised:
 - **Practical elements** (ie paper towel placement)
 - **Carpet design aesthetics**
 - **Privacy issues with large windows**
 - **Safety concerns** in open spaces and hallway layouts
- Indicates need for:
 - **Welcoming environment**
 - **Security and comfort**
- Overall preference for:
 - **Innovative, functional spaces**
 - **Balance of aesthetics and practicality**
 - Addressing weaknesses in **design implementation and layout**

Design and Practical Elements SUMMARY

Summary of Design Recommendations

- Enhance **privacy** in bathrooms and classrooms
- Add **interactive technology** (projectors, screens)
- Improve **mirrors and vanities** placement
- Use **practical, visually appealing flooring**
- Ensure **comfortable, ergonomic seating**
- Design **collaborative common areas** to reduce safety concerns
- Implement **clear signage and navigation** in entryways
- Address **window privacy** with coverings or graphics
- Maximize **wall space usability** for displays/instructional tools
- Create **flexible layouts** for diverse learning styles



Consideration of Scope and Details

1. Impact of Adding 6th Grade

- Projected increase of 180–200 students - more classroom & core capacity
- Can bring more traffic at peak hours since they are not in sports before/ after school

2. Site and Safety Considerations

- Fine Arts located beside large gym with corridor connection or behind auditorium
- Transportation routes (23 regular + 4 SPED); parent queue described as “terrible”; parking goal: one space per staff member.
- Security upgrades: access control, impact-resistant windows, maintain a secure vestibule.

3. Curriculum and Classroom Design

- Existing classrooms are too small; interest in larger collaboration classrooms and division by curriculum area rather than grade.
- Needs & Wants: second science lab, dyslexia room, removal of lockers for hallway space, technology storage near restrooms.

Consideration of Scope and Details

4. Library and Learning Spaces

- Library to serve as a multi-use hub at the front of the school; include breakout areas; flexible furniture; modern tech (charging stations, TVs); improved lighting controls.

5. Technology Upgrades

- Satisfaction with recent HS renovations; need for similar spaces, data drops, security systems
- Might be able to use E-Rate reimbursement for some upgrades.

6. Custodial, Grounds, and Maintenance

- More custodial rooms with power and mop sinks; hand dryers preferred; wall-mounted toilets
- Water rust issues and mechanical room asbestos must be addressed.

Consideration of Scope and Details

7. Fine Arts Facility Improvements

- **Auditorium Renovation:** ADA compliance will reduce seating; preference for continuous accessible circulation (no lifts); insulated masonite stage flooring; catwalk addition; preferably more lobby space.
- **Band Program:** Enrollment of 250–275 students (grades 6–8); need for large shared office, specialized instrument storage, work room, percussion room, ensemble/practice spaces, and acoustically treated finishes.
- **Choir Program:** 140 students; large choir room, risers, practice rooms, office space, uniform storage, and technology upgrades.
- **Theater Arts:** Desire for a black box theater/classroom (capacity ~100), adjacent to auditorium for efficiency, with flexible staging, dedicated scene shop with good ventilation, and dressing rooms.

8. Athletics Facilities

- Field house supports all boys' sports except basketball (~200 boys); need for separate locker rooms, laundry facilities, storage, and offices; suggestion to relocate field house north of HS.

Community Engagement

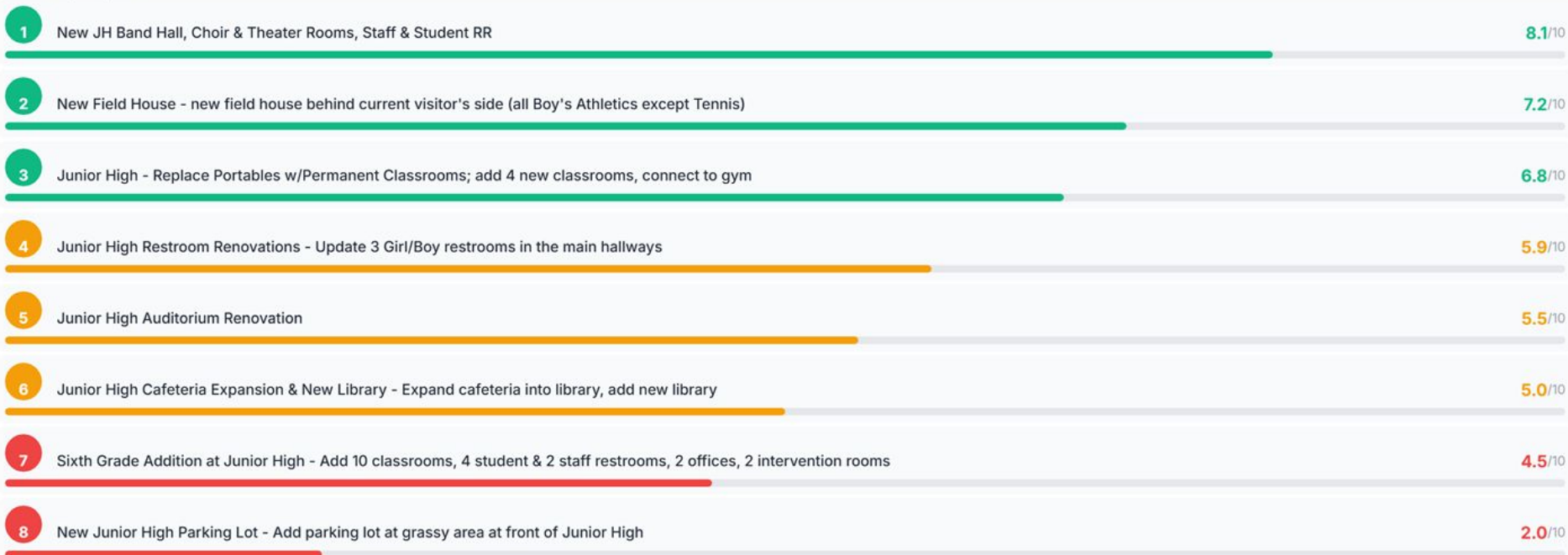
- Project prioritization
- Observing needs
- Identifying opportunities



Project Considerations

Project	Description	Costs
JH: Fine Arts Classrooms	New JH band hall, choir & theater rooms, staff & student restrooms	\$4,200,000.00
JH: Replace Portables	Remove JH portables; Add 4 new permanent classrooms; Connect to Gym	\$1,800,000.00
JH: Auditorium Renovation	Renovation of Junior High auditorium	\$750,000.00
JH/HS: New Field House	New field house behind current visitors side (all boys' athletics except tennis)	\$6,500,000.00
JH: 6th Grade Addition	Add 10 classrooms, 4 student & 2 staff restrooms, 2 offices, 2 intervention rooms	\$4,500,000.00
JH: Cafeteria Expansion & New Library	Expand cafeteria into library; Add new library	\$2,000,000.00
JH: Restroom Renovations	Update 3 student restrooms in the 3 main hallways	\$405,000.00
JH: New Parking Lot	Add parking lot at grassy area at front of Junior High	\$375,000.00
TOTAL CURRENT COSTS OF ALL PROPOSED BOND PROJECTS		\$20,530,000.00
JH/HS: New Press Box	New press box on current visitors side; Add 1,000 seats; Switch home / visitor	\$550,000.00
HS: Baseball & Softball Turf	Install synthetic turf at existing baseball & softball fields	\$1,600,000.00
JH/HS: Resurface Track	Resurface existing track	\$310,884.00
TOTAL CURRENT COSTS OF PROPOSED FUND BALANCE PROJECTS		\$2,460,884.00

Project Prioritization



Building Base of Shared Knowledge & Community Support



Tour Feedback

BULLDOZE the fieldhouse! - it's silly how terrible it is in there

The field house is a **scary place!** I can't imagine being a freshman going to the back locker room

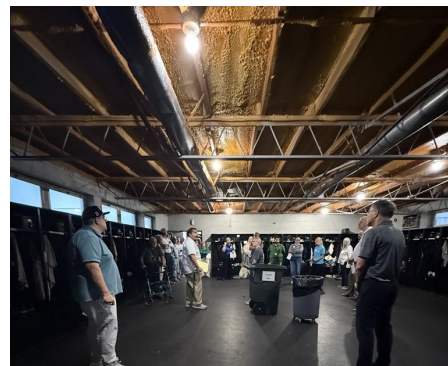
Breezeway covered to new gym, football locker room for varsity - **water leakage** and in coach's office. Bad coach's bathroom. JV locker room is 60+ years old.

Very sad feeling spaces

Demolish brick locker rooms

Temperature issues. Pests and vermin. Freshmen locker room condition issues. Female athletes?

Updated locker room for athletic space for the 6th grade.



Tour Feedback

It's current condition, I want to see modifications and improvements that reflect the **value of investing in children**. An environment that is more alive and **not prison like**.

Functionality, safety, fiscal responsibility

Safe, high quality, and engaging facility that will last a long time

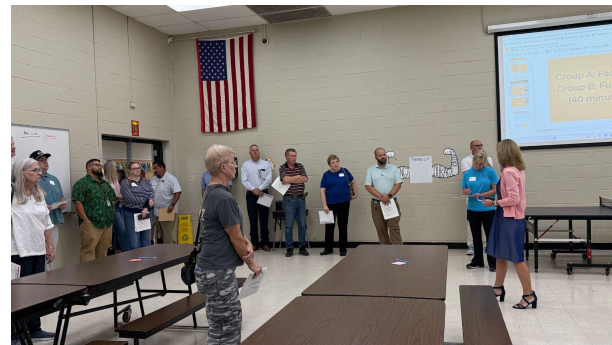
A school for the kids + staff to be proud of and feel safe. **Uplifting environment.**

Safety, lighting, **larger spaces**, band and choir etc. in building. **Expand** auditorium and cafeteria

Improvements are definitely needed.

Dangerous situation in auditorium

I would **prioritize the safety aspect** - kids outside, etc. in order to go to band



Tour Feedback

Could Marshall Street be made a ONE-WAY street or even closed to **make it safer** and easier to control, etc.?

Existing classrooms are **too small** for this age group!

Cafeteria is small - capacity? Auditorium seats are **unsafe** and the space has **major sound issues**. Old gym is small, windows are broken.

This is not a rich community - must **be conservative**!

Heat and air are priorities

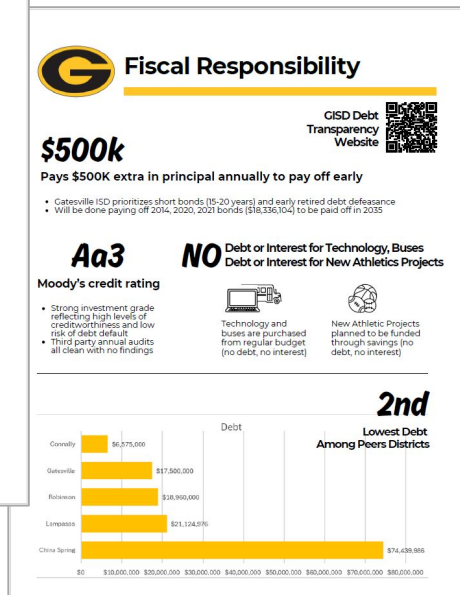
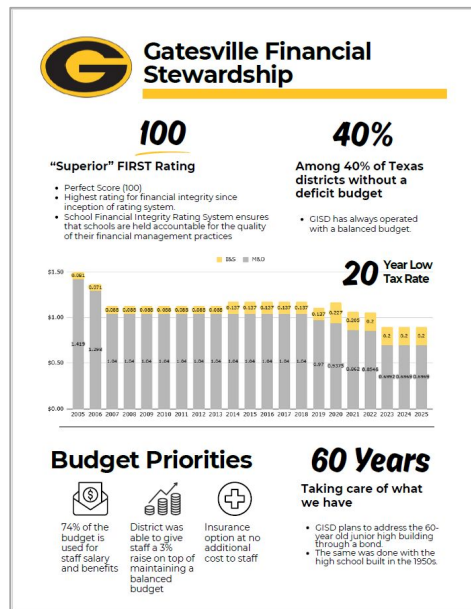
Please do something with the **bathrooms**! More please.

There's a great need for an investment here. I'm in!



Building Base of Shared Knowledge

- GISD financial accomplishments
- Responsible tax/debt discussion
- Taxpayer impact
- Financial status and funding strategies
- Ballot language
- Construction costs
- Commitment to caring for aging facilities

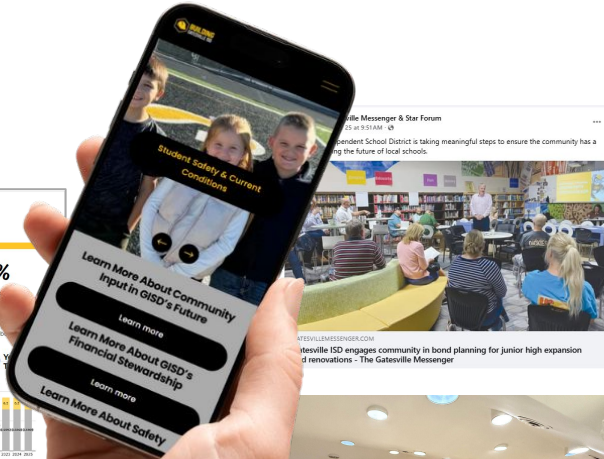
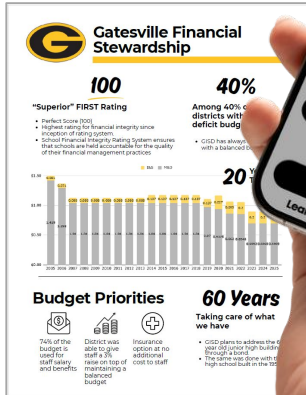


Ongoing Engagement Efforts

- **Incorporate feedback** to guide and shape project development
- **Distribute information** through local media (ie Gatesville Messenger)
- **Send regular email updates** to parents and staff
- **Launch community presentations** led by the Superintendent
- **Equip leadership with clear, unified talking points and comprehensive reports** to ensure consistent messaging and informed engagement
- **Develop transparent, detailed materials** for public access via **BuildingGatesvilleISD.org** ➡



Ongoing Engagement Efforts



- Informative, transparent community resource
- Fiscal stewardship
- Community inclusion (multimedia, tours, feedback, FAQs)
- Resources (presentations, handouts)

Engagement Timeline

October

Board review of
engagement plan;
Design Committee
Visioning

November

Community Focus
Group

December

Committee(s)
summary report to
Board

January 26

Board considers
Recommended Bond
Package;



Begin community
presentations

February 9

Finalize decisions and
Call for Election

Gatesville Independent School District

Bond Planning Design & Engagement

Questions?

