

MnMTSS 2024-2025

Presented by
Sang Maxwell

St. Cloud Area
School District 



-  Infrastructure for Continuous Improvement
-  Family and Community Engagement
-  Multi-Layered Practices and Support
-  Assessment
-  Data-Based Decision Making



MN MTSS & 742 Practices

Presentation Overview

- What is MnMTSS
- Why we use it
- MnMTSS 5 pillars
- MnMTSS District SEMI Survey
- District Results
- 2024 - 2025 Goals for ISD742
- Our process

What is MnMTSS

The Minnesota Multi-Tiered System of Supports (MnMTSS) is a framework that helps ensure students have positive academic, behavioral, developmental, emotional, and social outcomes. It's based on the belief that all students can learn and thrive, and uses evidence-based practices that are culturally and linguistically responsive. MnMTSS also uses an anti-bias and socially-just approach to examine policies and practices.

Why we use it

Provides a FRAMEWORK which ensures positive outcomes for students through a system of continuous improvement

Five Components that work together to use resources efficiently and achieve positive student outcomes

Gives a ROADMAP to help districts evaluate their implementation, plan for improvement, and monitor progress

MN MTSS Five Pillars



Infrastructure for Continuous Improvement

The MnMTSS framework organizes people around equitable and empirical decision-making regarding student academic, behavioral, social and emotional well-being.



Multi-layered Practices and Support

Multi-layered practices allow every student to receive the support they need to reach meaningful and rigorous learning standards.



Family and Community Engagement

MnMTSS aims to engage with families and communities as partners in educational decision making by developing reciprocal relationships, amplifying the voices of marginalized or disadvantaged populations, clearly communicating learning objectives and student progress and actively listening and responding to contributions and concerns from families.



Assessment

Assessment illuminates the path forward for student academic, social, emotional and behavioral success.



Data-Based Decision Making

Data-based decision making grounds the work of educators in empirical evidence and system alignment across people and programs so that all are working toward shared goals.

MnMTSS SEMI Surveys

Conducted August 2024

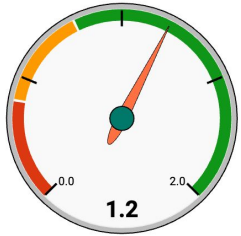
- Purpose: to use as a baseline self evaluation for strategic planning guidance
- Method: District Leadership Team: 4 groups evaluated 101 questions
- Scoring: Never = 0; Partial = 1; Frequently = 2

District DLT Scores



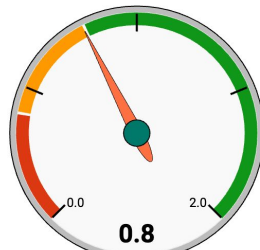
Infrastructure for Continuous Improvement

Infrastructure for Continuous Improvement



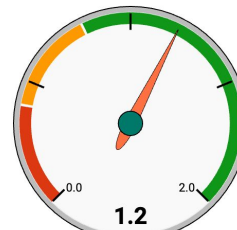
Multi-layered Practices and Support

Multi Layered Practices



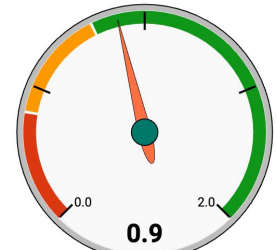
Family and Community Engagement

Family & Community Engagement



Assessment

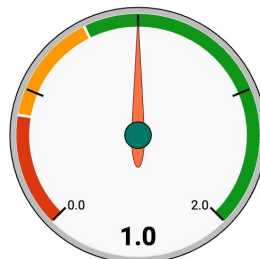
Assessment



Data-Based Decision Making

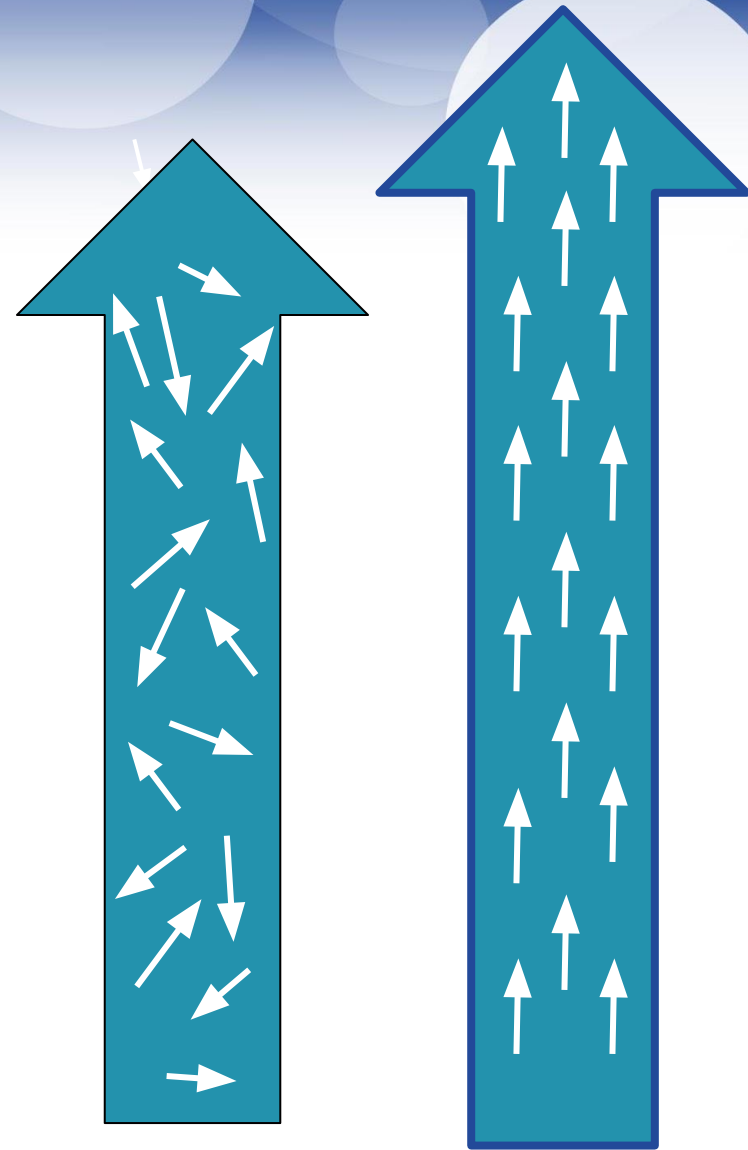


Data-Based Decision Making



2024 - 2025 Goals

- This year is about learning and collaborating for system implementation for the 25-26 school year
- Ensure we have common procedures and shared understanding in 742 on the 5 areas of MN MTSS
- Make this a collaborative effort as we identify and align our resources, supports, and procedures
- Create a communication tool to house MN MTSS system information
- Website development



Our Process

SELECT one area of MN MTSS to focus on each month



REVIEW our current system practices



IDENTIFY current barriers to success



REFINE any areas in need of improvement

Thank you!

Questions?

St. Cloud Area
School District 