



NORTH SLOPE BOROUGH SCHOOL DISTRICT

MEMORANDUM

TO: Robyn Burke, President
Members of the School Board

THROUGH: David Vadiveloo, Superintendent *Dsv*

THROUGH: Caitlin Santos, Director of Curriculum & Instruction *CS*

FROM: Ranel Gandia, Student Records Manager *RG*
Ian Acuna, Data Manager *IA*

DATE: May 1, 2024

SUBJECT: Enrollment and Attendance Report

Memo No. SB24-157
(Information Item)

NSBSD Strategic Plan Goal:

1.2 Attendance: Cultivate an environment where attendance is valued, encouraged, and supported and implement a culturally integrated calendar that is aligned across the district to increase attendance and expand options for students.

Issue Summary:

Research consistently shows that student attendance matters. Students with higher attendance rates are more likely to meet state academic standards, and graduate on time at higher rates. Educational outcomes reflect attendance even in the earliest grades, and then those gaps continue to widen into secondary (grades 6-12). While some students are more adversely affected by absences than others, it is clear that the effects of absences accumulate over time; attendance matters and every day counts. This is not to say that perfect attendance should be the goal ‘no matter what.’ We understand that students may miss school for a variety of reasons, and do not want to encourage sick children to attend when it is not appropriate to do so. In light of these factors, and the overwhelming amount of research, the district has set the attendance goal for all students at 80%.

K-12 Enrollment by Site			
School	Current Student Count	Attendance Report	22-23 April Student Count
Nunamiut School	90	71.48% (↑ 6.19%)	88
Tikiqaaq School	216	71.62% (↑ 3.05%)	242
Nuiqsut Trapper School	137	67.30% (↑ 2.62%)	144
Kali School	80	86.04% (↓ 2.55%)	74
Alak School	129	72.44% (↑ 3.73%)	152
Harold Kaveolook School	56	84.68% (↑ 2.91%)	54
Meade River School	84	74.24% (↑ 7.01%)	70
Barrow High School	256	69.92% (↑ 2.18%)	259
Eben Hopson Middle School	213	77.73% (↑ 2.38%)	234
Fred Ipalook Elementary School	425	79.83% (↑ 2.22%)	434
KIITA Learning Community	42	62.08% (↓ 7.54%)	38
Total	1728	74.93% (↑ 2.52%)	1789

K3 & K4 Enrollment by Site			
School	Current Student Count	Attendance Report	22-23 April Student Count
Nunamiut School	13	63.14% (↑ 13.64%)	13
Tikiġaq School	14	62.42% (↑ 5.21%)	26
Nuiqsut Trapper School	14	57.62% (↑ 11.16%)	20
Kali School	10	96.00% (↑ 26.95%)	14
Aġak School	10	62.09% (↑ 14.47%)	10
Harold Kaveolook School	8	88.64% (↑ 4.71%)	4
Meade River School	8	35.23% (↓ 26.67%)	9
Fred Ipalook Elementary School	100	66.10% (↑ 4.72%)	88
Total	177	66.22% (↑ 6.49%)	184

Night School Enrollment		
School	Current Student Count	22-23 April Student Count
KIITA Learning Community	15	16

The symbols (↑ and ↓) next to the data indicates if there was an increase or decrease since the last monthly report, the percentage next to the symbol indicates the amount it has increased or decreased by since the last monthly report.

Below, you will find two new charts. The first chart is a year over year enrollment summary starting with 2020. The second chart is showing year over year attendance throughout the school year. We provide this information so that trends can be seen, however please note that due to COVID related attendance policies, as well as the way that attendance was previously calculated, the attendance rate for the 2021-2022 school year is inflated. During that time, when a school was in “Red” status, or operating remotely, all attendance was “present.” During that school year, we also counted a student present daily, rather than period by period in Middle School and High School. This data is helpful however in order to see peaks and valleys by month.



Enrollment: Monthly & Yearly Comparison

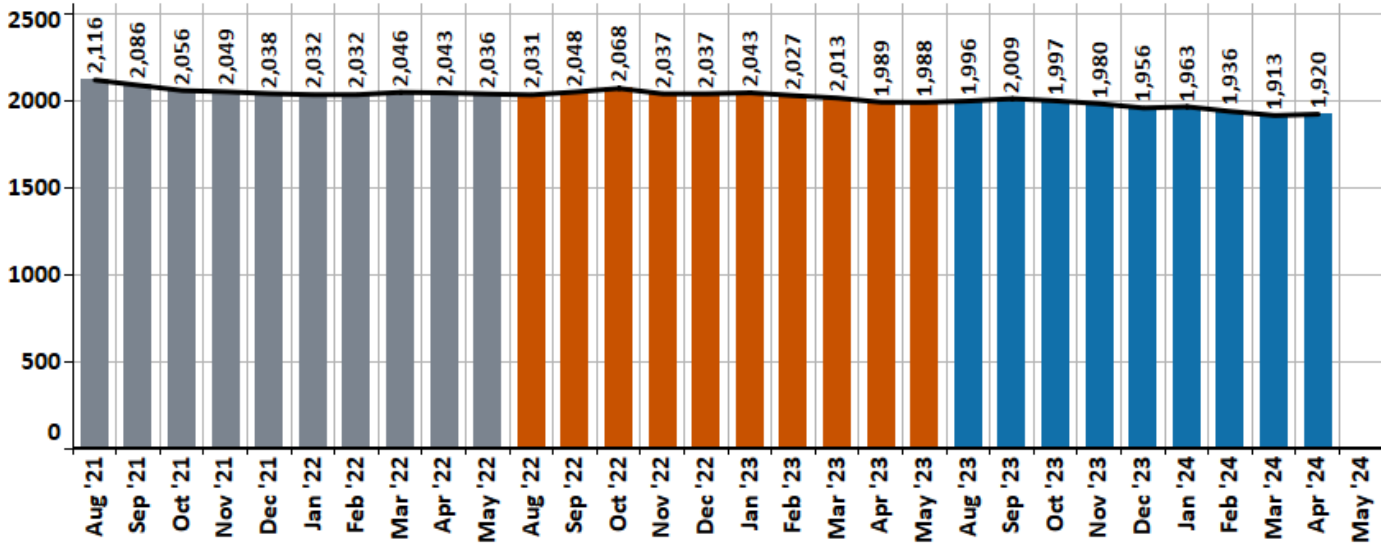
North Slope Borough School District



Filters Year(s): Multiple valu... Month(s): All School(s): NSBSD Grade(s): All Grades [↓ PDF](#)

Year(s): 23-24, 22-23, 21-22 | Month(s): All

School(s): NSBSD | Grade(s): All Grades



Legend	21-22	22-23	23-24
--------	-------	-------	-------

# Monthly Differences		21-22		22-23		23-24	
	Aug	2,116		2,031		1,996	
	Sep	2,086	↓ 30 -1.4%	2,048	↑ 17 0.8%	2,009	↑ 13 0.7%
	Oct	2,056	↓ 30 -1.4%	2,068	↑ 20 1.0%	1,997	↓ 12 -0.6%
	Nov	2,049	↓ 7 -0.3%	2,037	↓ 31 -1.5%	1,980	↓ 17 -0.9%
	Dec	2,038	↓ 11 -0.5%	2,037	- -	1,956	↓ 24 -1.2%
	Jan	2,032	↓ 6 -0.3%	2,043	↑ 6 0.3%	1,963	↑ 7 0.4%
	Feb	2,032	- -	2,027	↓ 16 -0.8%	1,936	↓ 27 -1.4%
	Mar	2,046	↑ 14 0.7%	2,013	↓ 14 -0.7%	1,913	↓ 23 -1.2%
	Apr	2,043	↓ 3 -0.1%	1,989	↓ 24 -1.2%	1,920	↑ 7 0.4%
May	2,036	↓ 7 -0.3%	1,988	↓ 1 -0.1%			

# Yearly Differences		21-22		22-23		23-24	
	Aug	2,116		2,031	↓ 85 -4.0%	1,996	↓ 35 -1.7%
	Sep	2,086		2,048	↓ 38 -1.8%	2,009	↓ 39 -1.9%
	Oct	2,056		2,068	↑ 12 0.6%	1,997	↓ 71 -3.4%
	Nov	2,049		2,037	↓ 12 -0.6%	1,980	↓ 57 -2.8%
	Dec	2,038		2,037	↓ 1 -	1,956	↓ 81 -4.0%
	Jan	2,032		2,043	↑ 11 0.5%	1,963	↓ 80 -3.9%
	Feb	2,032		2,027	↓ 5 -0.2%	1,936	↓ 91 -4.5%
	Mar	2,046		2,013	↓ 33 -1.6%	1,913	↓ 100 -5.0%
	Apr	2,043		1,989	↓ 54 -2.6%	1,920	↓ 69 -3.5%
May	2,036		1,988	↓ 48 -2.4%			



Attendance: Monthly & Yearly Comparison

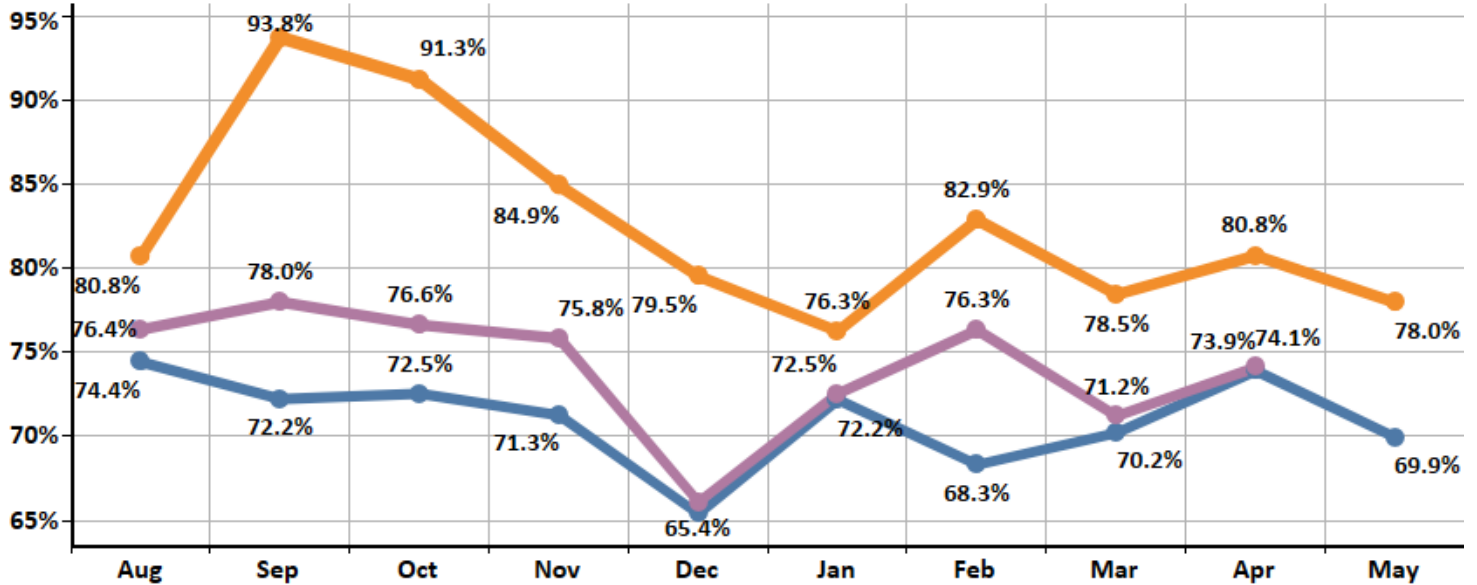
North Slope Borough School District



Filters Year(s): Multiple valu... Month(s): All School: NSBSD Grade: All Students (...)

[↓ PDF](#)

Year(s): 23-24, 22-23, 21-22 | Month(s): All
 School: NSBSD | Grade: All Students (Pre-K - 12)



Legend	23-24	22-23	21-22
--------	-------	-------	-------

# Monthly Differences	21-22	22-23	23-24
	Aug	80.8%	74.4%
Sep	93.8%	72.2%	78.0%
Oct	91.3%	72.5%	76.6%
Nov	84.9%	71.3%	75.8%
Dec	79.5%	65.4%	66.1%
Jan	76.3%	72.2%	72.5%
Feb	82.9%	68.3%	76.3%
Mar	78.5%	70.2%	71.2%
Apr	80.8%	73.9%	74.1%
May	78.0%	69.9%	78.0%

# Yearly Differences	21-22	22-23	23-24
	Aug	80.8%	74.4%
Sep	93.8%	72.2%	78.0%
Oct	91.3%	72.5%	76.6%
Nov	84.9%	71.3%	75.8%
Dec	79.5%	65.4%	66.1%
Jan	76.3%	72.2%	72.5%
Feb	82.9%	68.3%	76.3%
Mar	78.5%	70.2%	71.2%
Apr	80.8%	73.9%	74.1%
May	78.0%	69.9%	78.0%

Signature: DS Vadiveloo
DS Vadiveloo (May 4, 2024 11:25 AKDT)

Email: david.vadiveloo@nsbsd.org

Signature: Caitlin Santos
Caitlin Santos (May 3, 2024 19:36 AKDT)

Email: Caitlin.Santos@nsbsd.org