

# Farmington Municipal Schools

---

## *School Board Redistricting*

April 12, 2022

Brad Morrison  
Redistricting Specialist



# Who Redistricts?

---

<i><b>Elected Body</b></i>	<i><b>Districts</b></i>	<i><b>Authority to Redistrict</b></i>
U.S. House of Representatives	3	State Legislature / Governor
New Mexico Legislature State House State Senate	70 42	State Legislature / Governor
Public Education Commission	10	State Legislature / Governor
County Commission	3/5	County Commission
City Council/Commission	4 to 10	City Council/Commission
<b>Local School Board</b>	<b>5/7</b>	<b>Local School Board</b>

# Redistricting

---

- What is “redistricting”?
  - Draw (and re-draw) lines that determine which voters are represented by each district
- Why redistrict?
  - NM Statutes, 22-5-1.1
    - Population > 16,000 (FMS = 59,546)
  - Population changes over the past 10 years
    - Unequal distribution of change
- When redistrict (typically)?
  - After Decennial Census data is released
    - Use most current population data

# Redistricting Process

---

- ❑ Public meeting(s)
- ❑ Redistricting guidelines
- ❑ Redistricting Plans
  - Evaluate current districts
  - Create plans
  - Gather input about plans
  - Revise plan(s), if needed
- ❑ Adopt a plan
- ❑ Following plan adoption
  - County clerk assigns voters to correct districts
  - Filing date
  - Election

# Principles of Districting

---

- ▣ Equal population
- ▣ Minority Voting Rights
- ▣ Compactness
- ▣ Contiguity
- ▣ Communities of interest

# Equal Population

---

- Total population (2020 Census): 59,546
  - Change from 2010 (62,279): -4.6% (-2,733 people)
- Ideal population = total pop. / # of districts
  - 2020 Census:  $59,546 / 5 = 11,909$
- Districts must be “substantially equal”
  - Within  $\pm 5\%$  of the ideal population
    - Population of each district (ideal pop.  $\pm 5\%$ )
      - $11,909 \pm 595$ , range: 11,314 – 12,504
- Based on total population, not registered voters

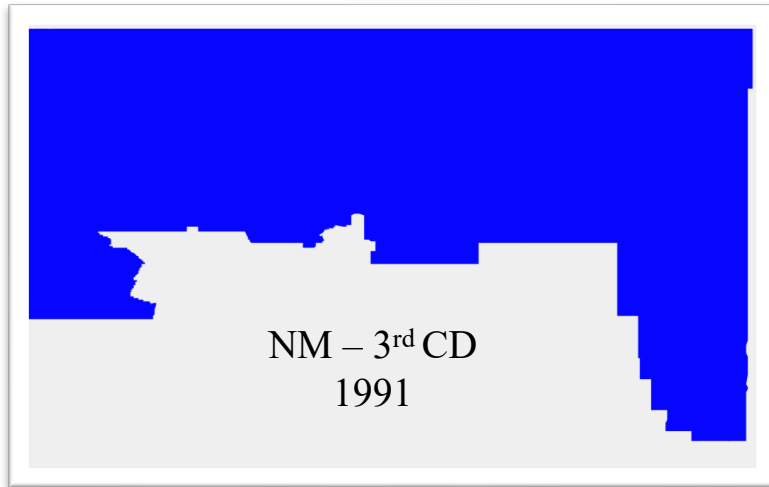
# Minority Voting Strength

---

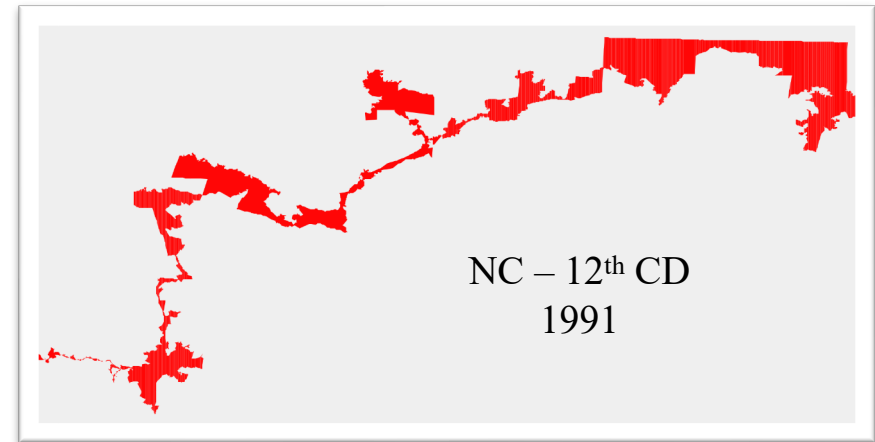
- Do not dilute voting strength of ethnic/language minority groups (Voting Rights Act, Section 2):
  - Native Americans
  - African Americans
  - Hispanics
  
- Do not create districts in which race is the predominant criterion in subordination of traditional districting principles (Shaw v. Reno, 509 U.S. 630 (1993))

# Compactness

## □ Compact:



## □ Not Compact:



- Different ways to measure compactness
  - None are perfect

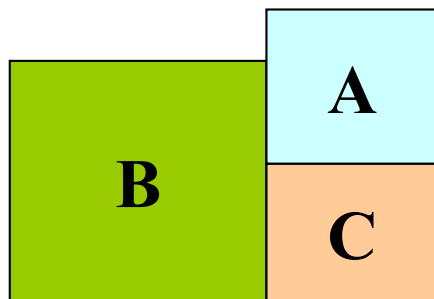


# Contiguity

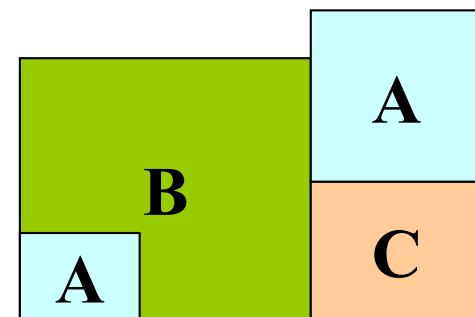
---

- ❑ No islands of territory
- ❑ One distinct part, not two or more

❑ Contiguous:



Not Contiguous:

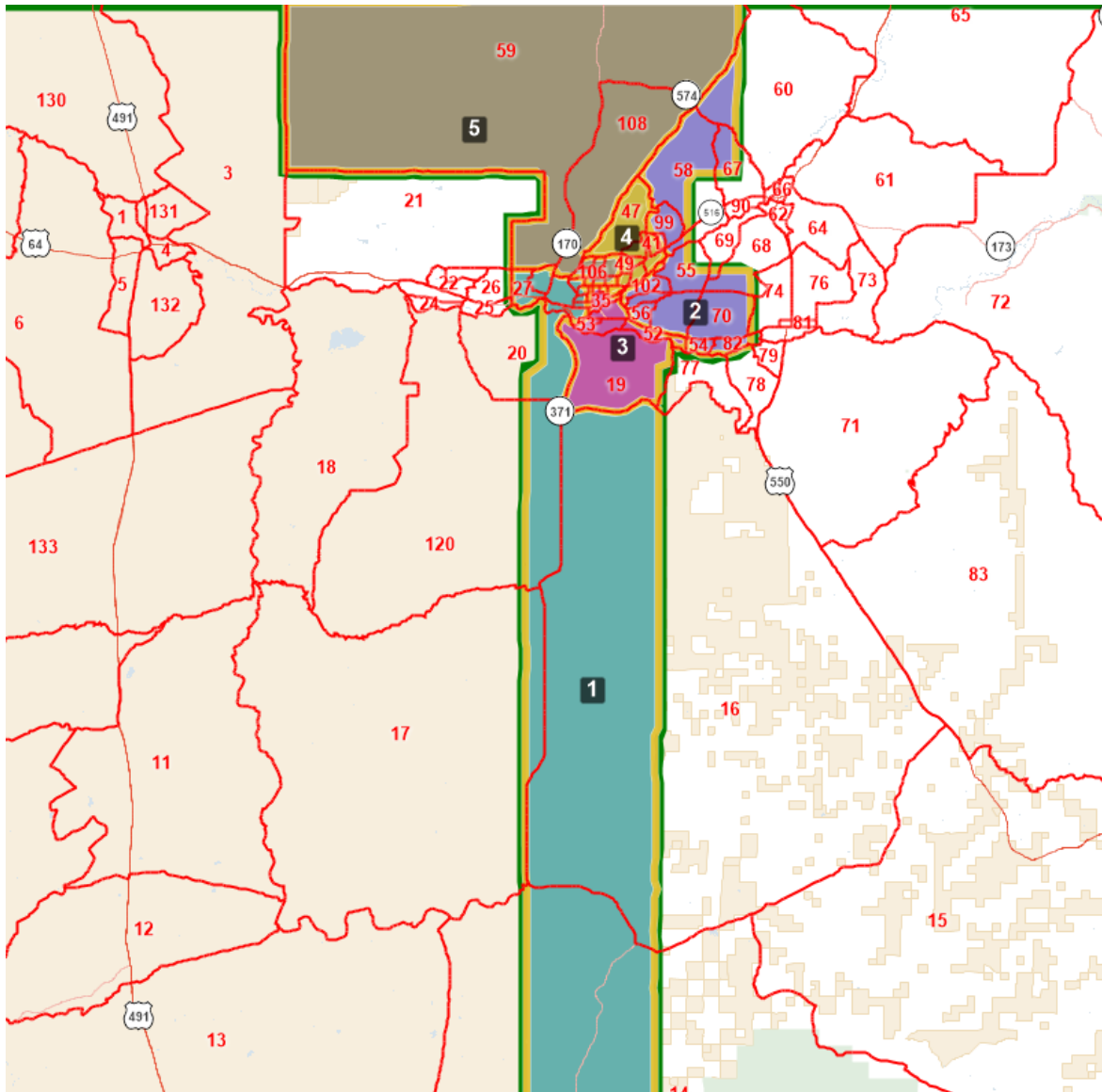


# Communities of Interest

---

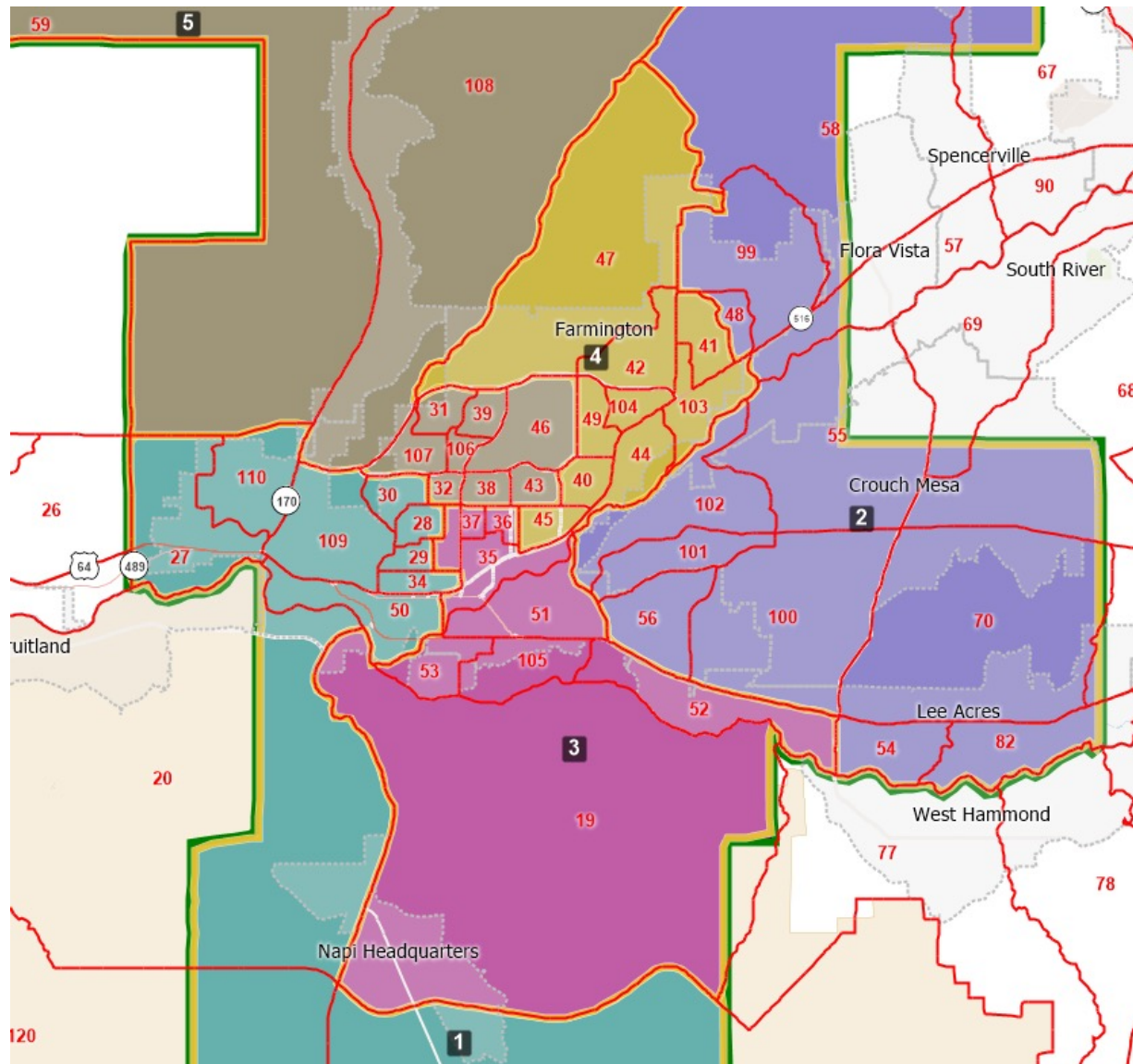
- ❑ Other factors which may determine where a district boundary could be drawn
  - Respecting political subdivisions/neighborhoods/geographic boundaries
  - Respect cultural/historical traditions
  - Maintaining core of existing districts
  - Avoid pairing of incumbents (board members)
  - Other communities of interest
  
- ❑ Can be considered as long as the other districting principles are not violated

# Current Districts

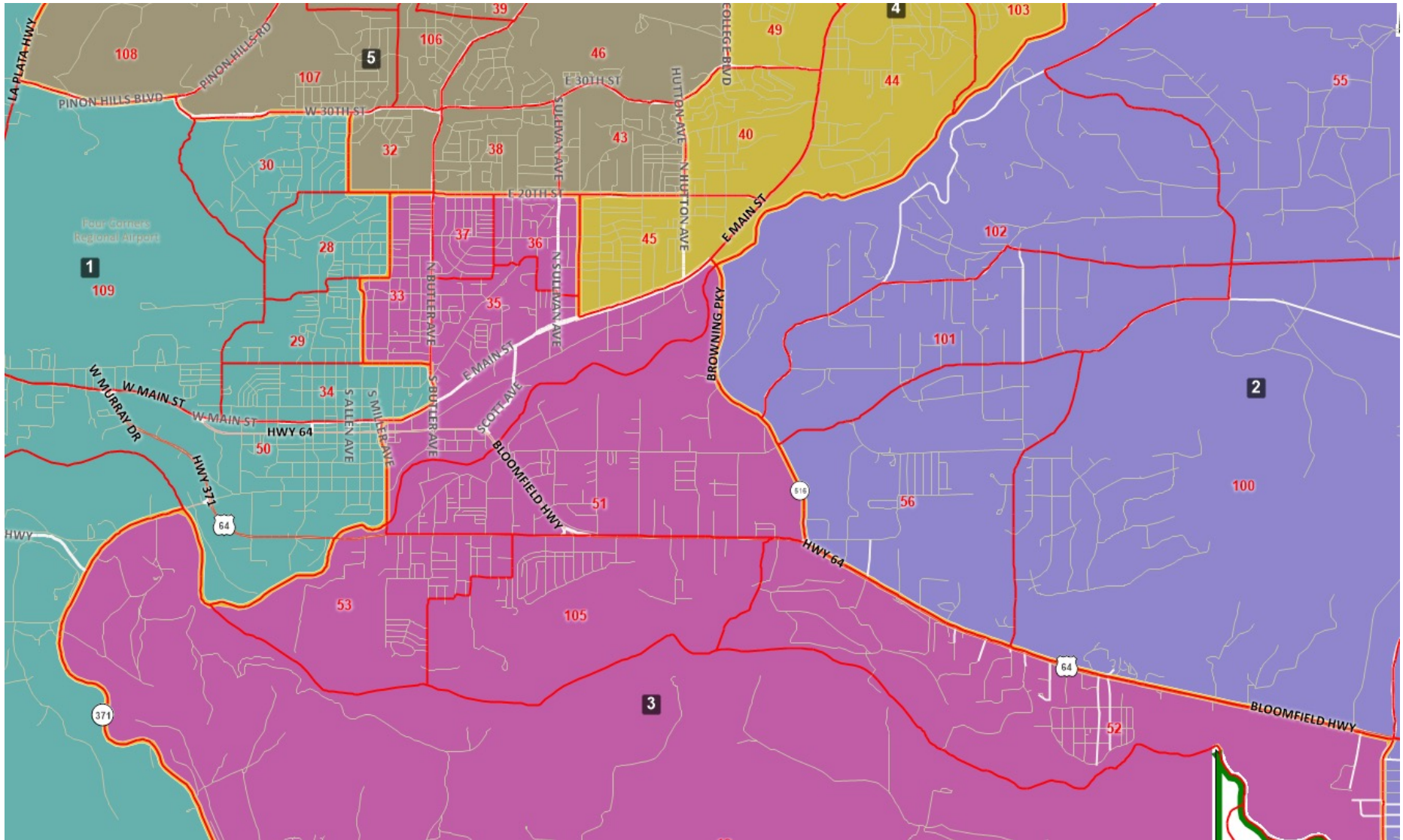


District	Total Pop	Dev.	% Dev.
1	12,780	871	7.3%
2	11,815	-94	-0.8%
3	11,075	-834	-7.0%
4	12,133	224	1.9%
5	11,743	-166	-1.4%
FMS	59,546		

# Current Districts - Farmington



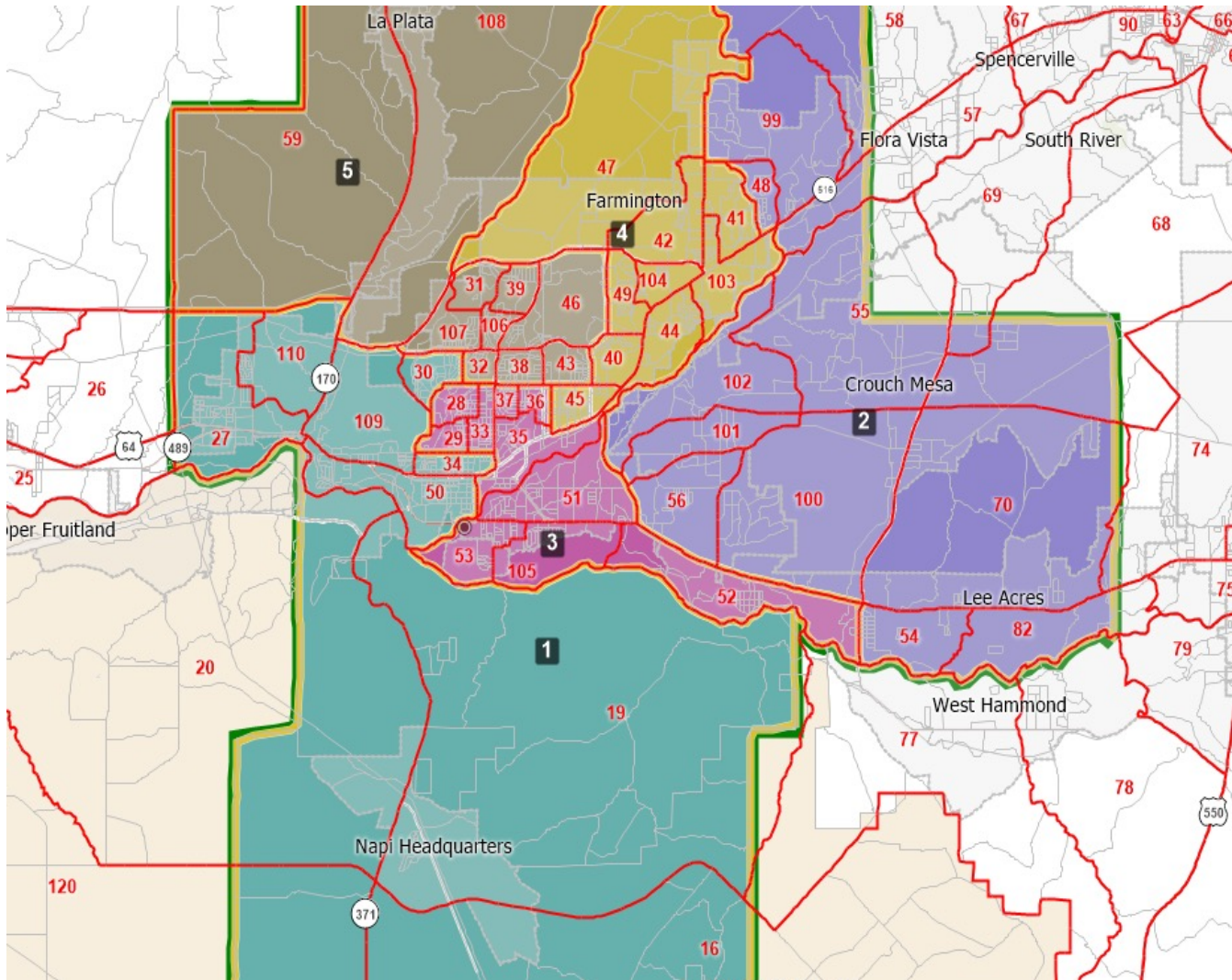
# Current Districts - Farmington





Research & Polling, Inc.

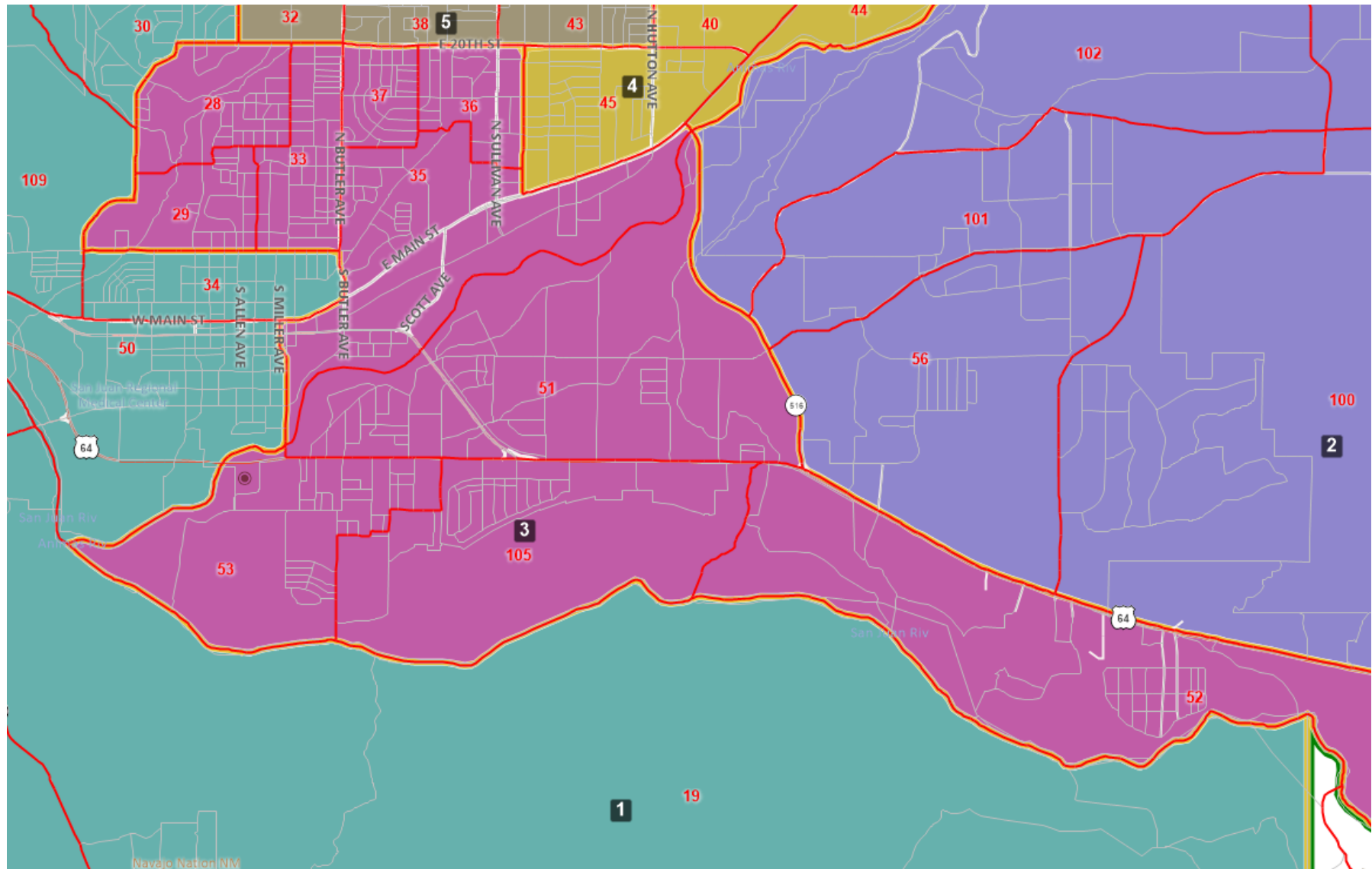
# Plan A – Farmington Area



District	Total Pop	Dev.	% Dev.
1	11,545	-364	-3.1%
2	11,815	-94	-0.8%
3	12,310	401	3.4%
4	12,133	224	1.9%
5	11,743	-166	-1.4%
FMS	59,546		

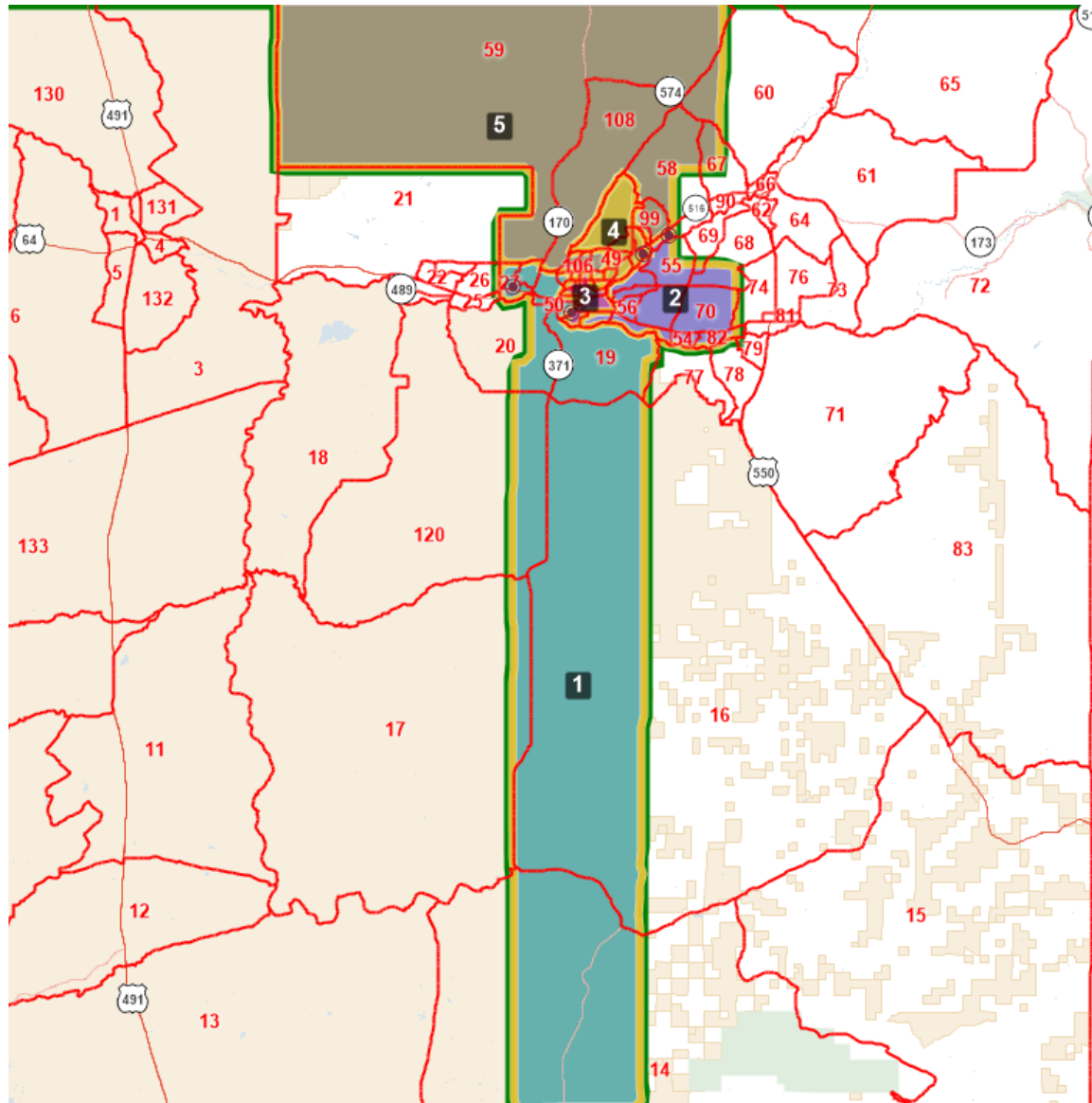
This plan only moves three precincts. Precincts 28 and 29 move from D1 to D3; and precinct 19 moves from D3 to D1, consolidating all of NAPI into D1. Districts 2, 4, and 5 remain the same.

# Plan A – Farmington



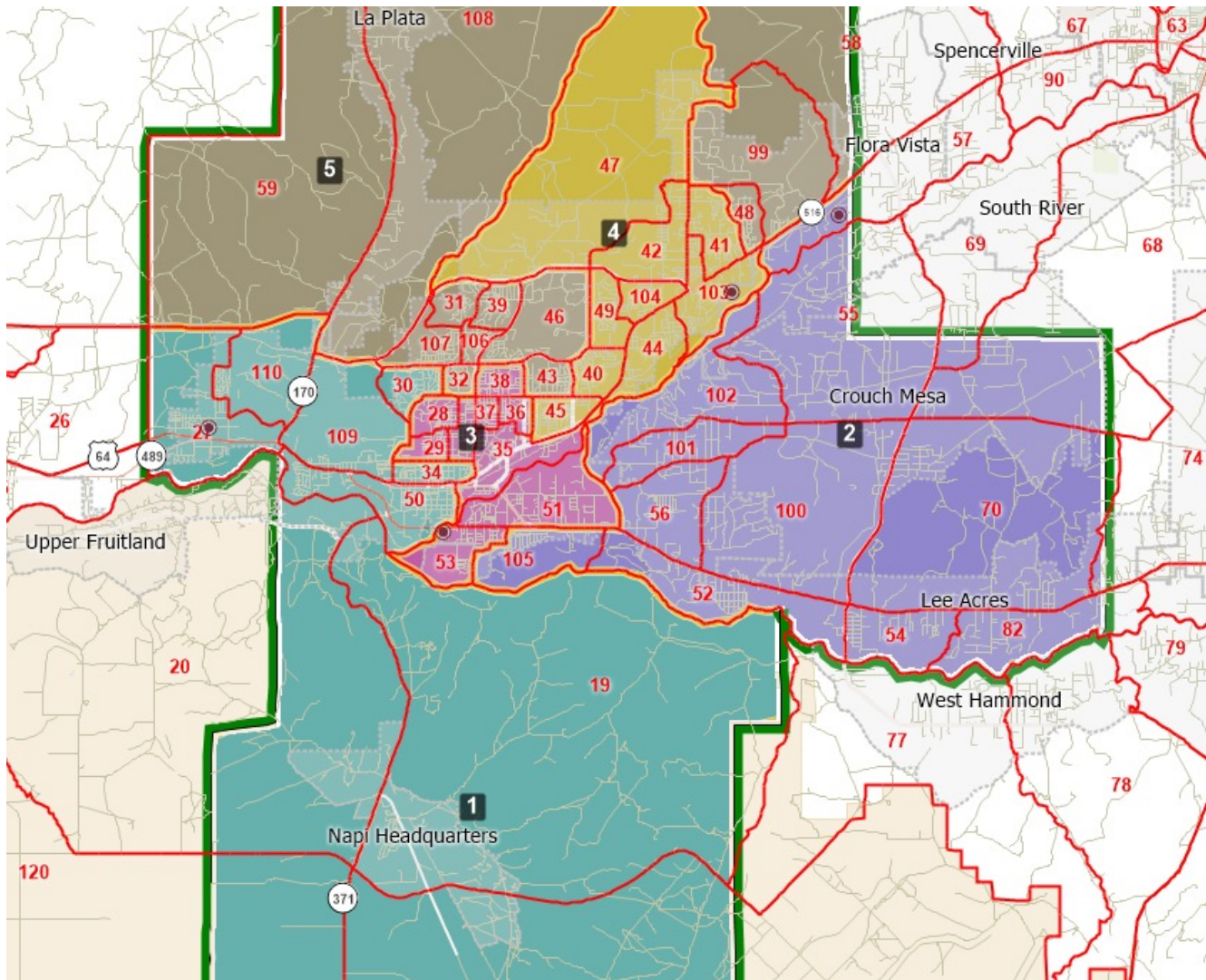


# Plan B



District	Total Pop	Dev.	% Dev.
1	11,545	-364	-3.1%
2	12,087	178	1.5%
3	12,032	123	1.0%
4	12,133	224	1.9%
5	11,749	-160	-1.3%
FMS	59,546		

# Plan B – Farmington Area

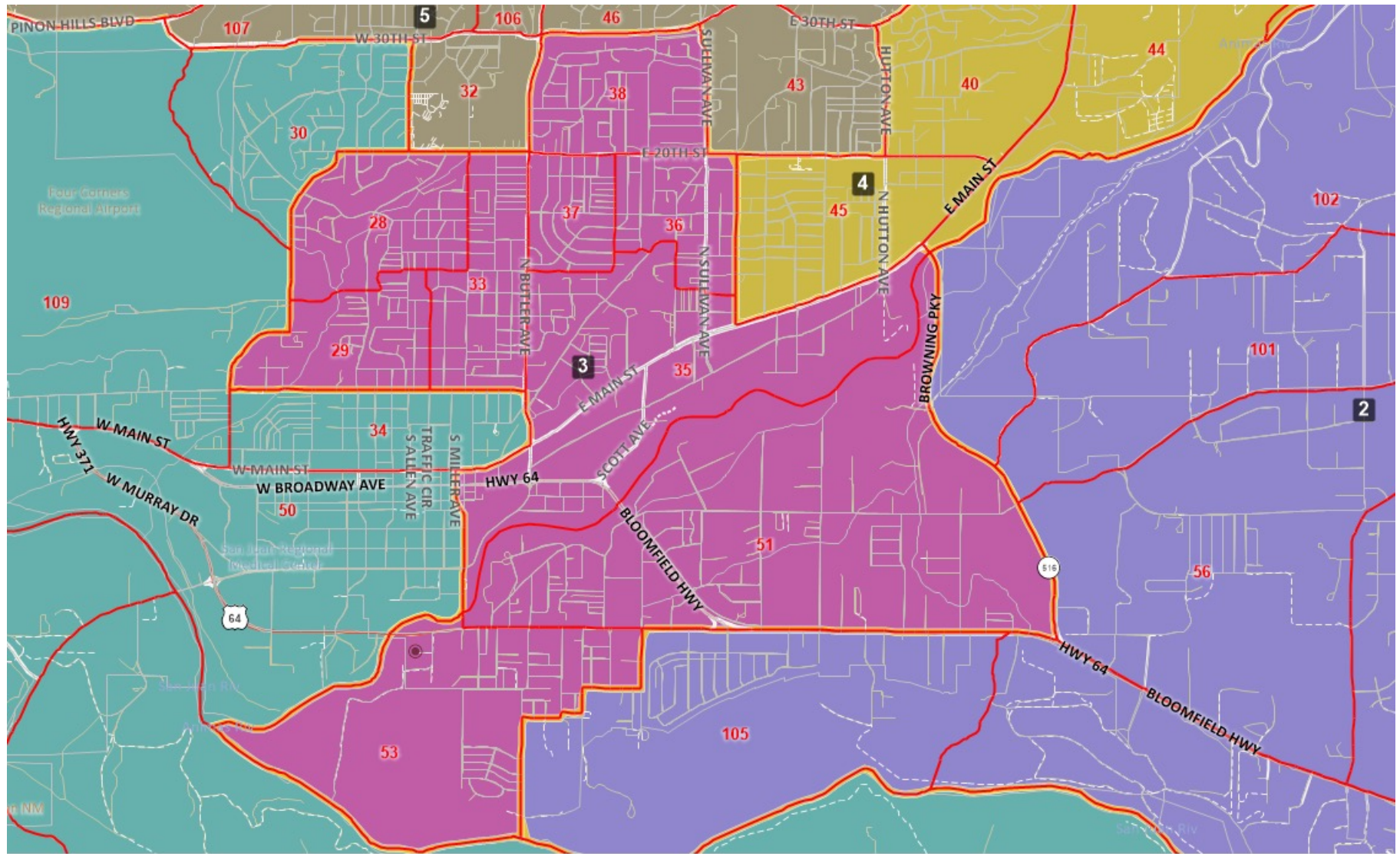


District	Total Pop	Dev.	% Dev.
1	11,545	-364	-3.1%
2	12,087	178	1.5%
3	12,032	123	1.0%
4	12,133	224	1.9%
5	11,749	-160	-1.3%
FMS	59,546		

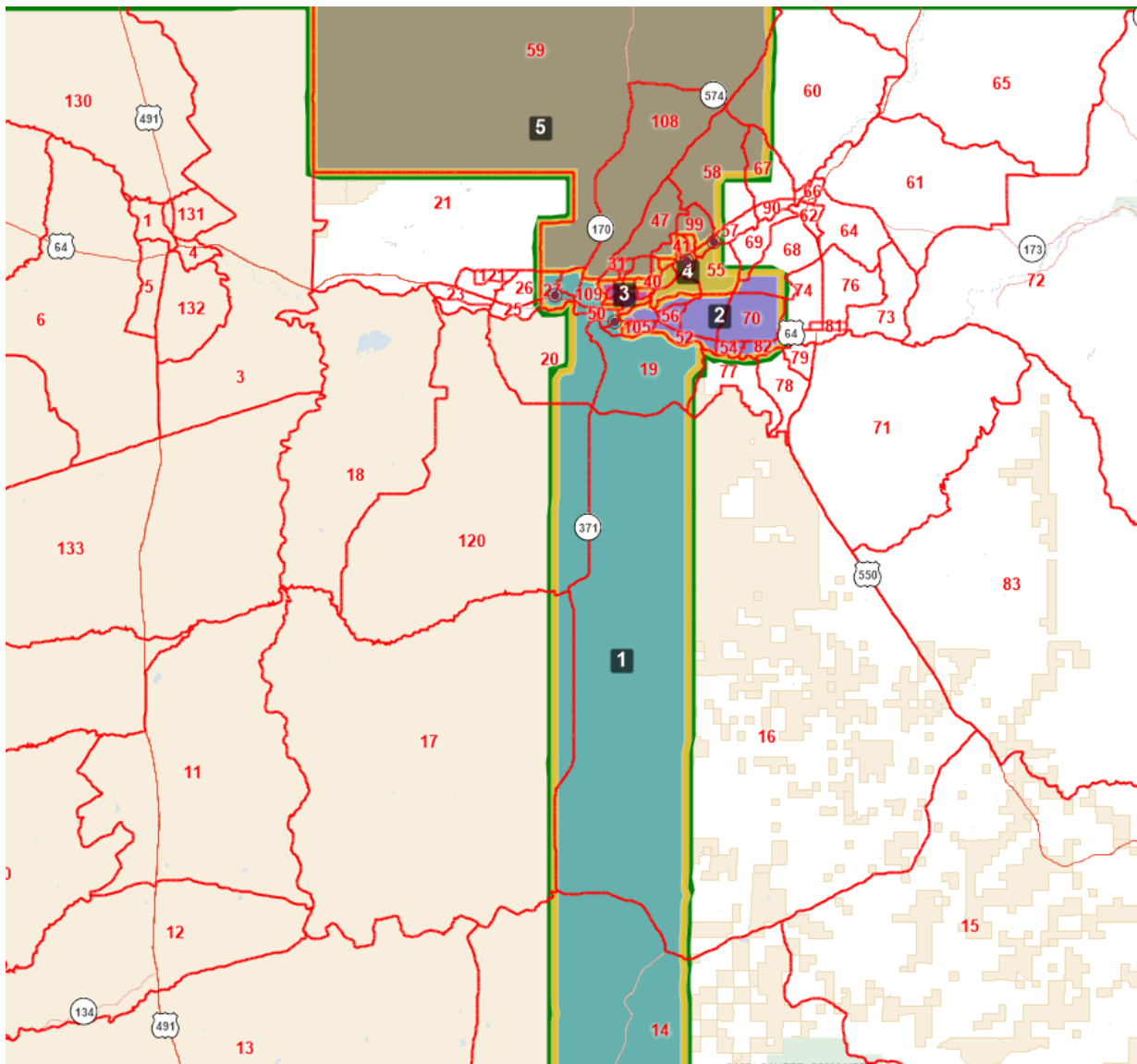
The area north of 516 that was in D2 is moved into D5. Precincts 52 and 105 (S of Bloomfield Hwy) are moved from D3 to D2. Precinct 19 is moved from D3 to D1. Precincts 28 and 29 move from D1 to D3. And precinct 38 moves from D5 to D3.



# Plan B - Farmington



# Plan C



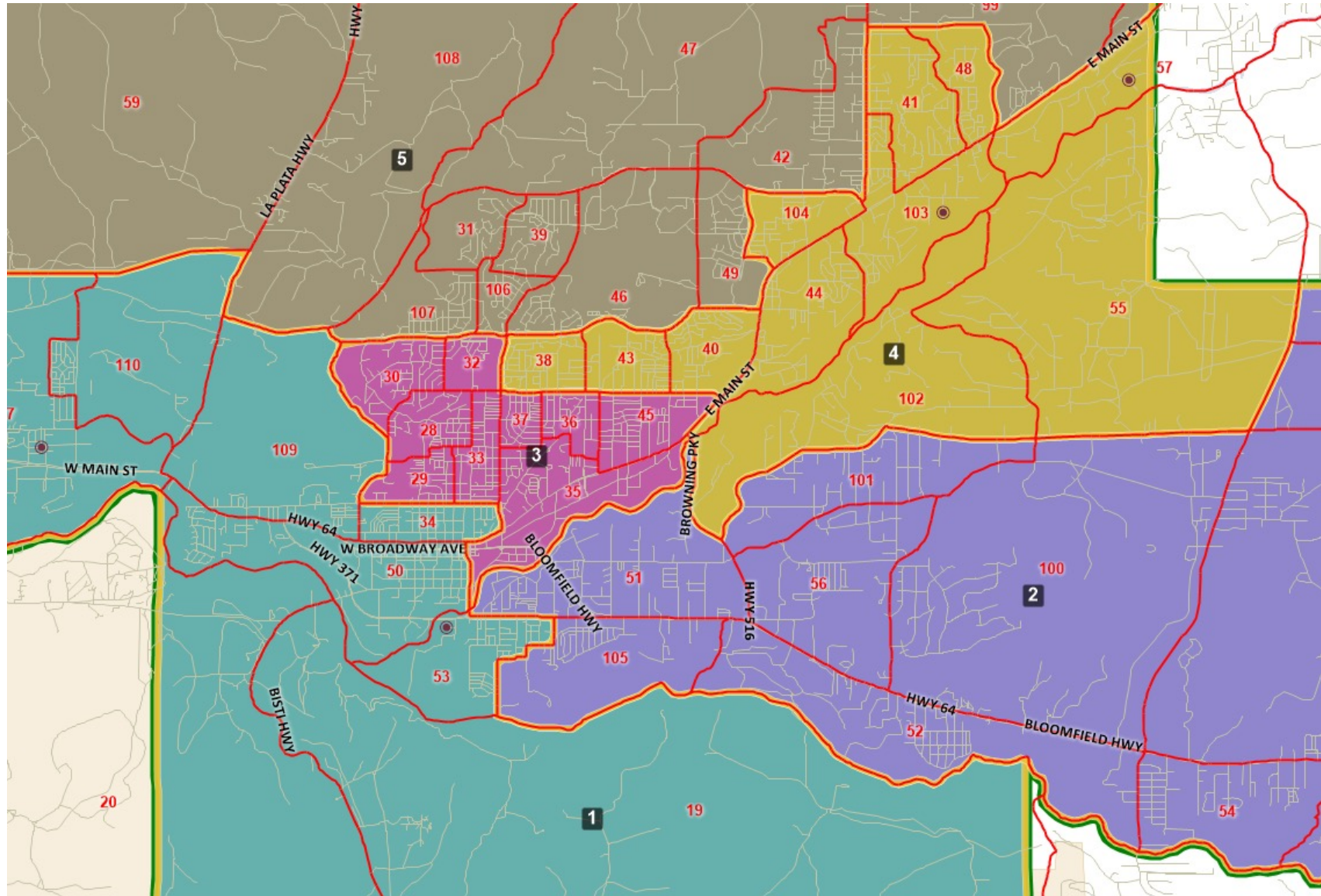
District	Total Pop	Dev.	% Dev.
1	11,570	-339	-2.9%
2	12,097	188	1.6%
3	11,393	-516	-4.3%
4	12,300	391	3.3%
5	12,186	277	2.3%
FMS	59,546		

This map illustrates the five numbered regions of the Bloomington, Indiana area, each with a distinct color and a set of numbered precincts. The regions are defined by red and orange boundary lines. Region 1 (teal) is located in the southwest, Region 2 (purple) in the southeast, Region 3 (pink) in the center, Region 4 (yellow) in the northeast, and Region 5 (grey) in the northwest. Major highways shown include HWY 120, HWY 64, HWY 371, W Main St, W Broadway Ave, and Bloomfield Hwy. Surrounding communities such as La Plata, Farmington, Crouch Mesa, Lee Acres, and West Hammond are also labeled. Precinct numbers are displayed within the boundaries of each region.

The goal of this plan was to create more compact districts by giving priority to geography. One of the effects is that it pairs incumbent Board members. D1 and D3 members are paired in D1. D2 and D4 members are paired in D4.



# Plan C – Farmington Area



# Thank you

---

Questions?

