



# AUGUST 10, 2021 EDUCATION COMMITTEE MEETING RECAP



REMEDATION	ACCELERATION
Spending significant time in below-grade level content before moving into new learning	Connecting unfinished learning in the context of new learning
Covering many objectives or standards from prior grades/units	Integrating a few lessons from prior units/grades
Just-in-case support Isolated from grade-appropriate learning	Just-in-time support grade appropriate learning
Usually with 50% of time on procedural fluency (when it comes to math)	Always with an appropriate balance of fluency, conceptual understanding, and application of work (when it comes to math)

# WHY ACCELERATION?

- STUDENTS MAKE MORE ACADEMIC GROWTH WHEN THEY ARE CONSISTENTLY GIVEN GRADE LEVEL CONTENT.
- THERE IS NOT ENOUGH TIME TO TEACH EVERYTHING MISSED FROM THE GRADE LEVEL BEFORE.
  - ACCELERATION IS A PEDAGOGICAL STRATEGY THAT LOOKS FORWARD, NOT BACK.
- FOCUS ON FILLING IN ONLY THE MOST CRITICAL GAPS—AND NOT IN ISOLATION, BUT AT THE MOMENT THEY'RE NEEDED.



ELEMENTARY

# \* WHAT DOES THE DATA TELL US AT PARKER CENTER?

- DATA ON 331 INCOMING KINDERGARTENERS
- APPROXIMATELY A DOZEN STUDENTS KNOW THE MAJORITY OF THEIR SIGHT WORDS
- MANY STUDENTS ARE ABLE TO IDENTIFY AT LEAST 50% OF THEIR LETTERS, COUNT 1:1, AND CAN IDENTIFY NUMBERS 1-10



# \* WHAT DOES THE DATA TELL US IN OUR ELEMENTARY BUILDINGS?

- EACH BUILDING ANALYZED THE DATA TRENDS FOR THEIR BUILDING
  - BUILDING TRENDS
  - GRADE LEVEL TRENDS
- OVERARCHING THEME IN MANY SCHOOLS
  - INFORMATIONAL TEXT
  - GEOMETRY



# HOW ARE BUILDINGS ADDRESSING THE LEARNING GAPS

## STRATEGIES

RELATIONSHIP BUILDING

TEACHING PROCESSES AND PROCEDURES

CLUSTER GROUPING

ADDITIONAL COLLABORATION TIME

DATA DRIVEN FOCUS

TUTORING

## SUPPORT PERSONNEL

PDS

MTSS FACILITATORS

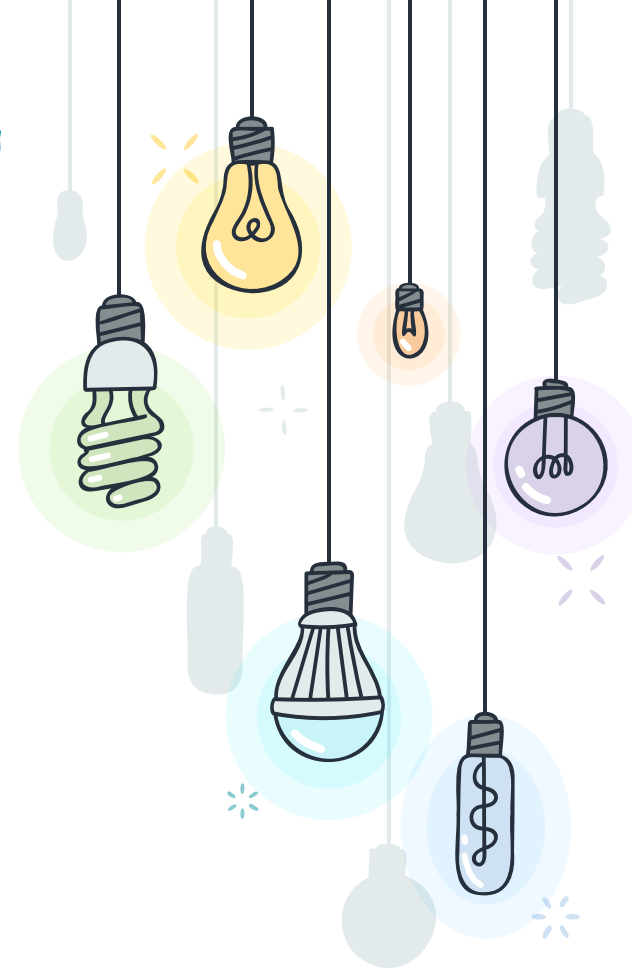
LITERACY/MATH SPECIALIST

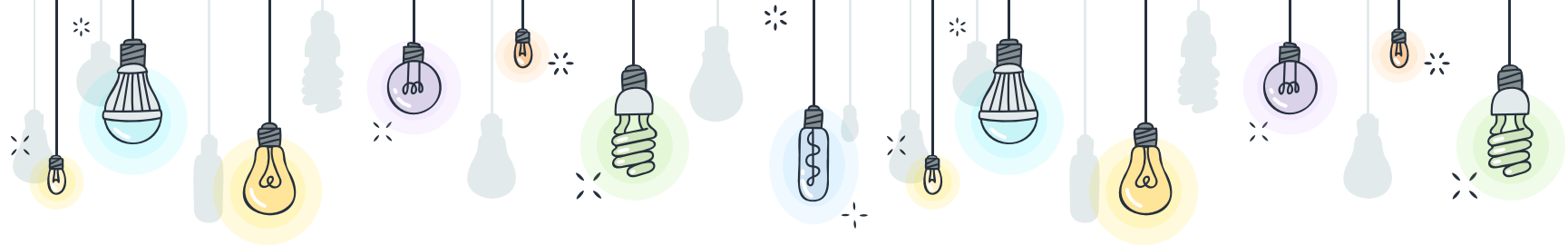
TARGETED SUPPORT SPECIALIST

SOCIAL WORKERS

FAMILIES & COMMUNITY

ADMINISTRATORS





## Staff:

PD DAY - INTRODUCE ACCELERATION

ADDITIONAL TRAINING WITH STAFF ON SEPT. 3 SIP DAY

## Community:

IMPORTANT DATA INFORMATION ABOUT SCHOOL PROGRESS WILL BE SHARED THROUGH VARIOUS SOURCES, AS APPROPRIATE

# COMMUNICATION PLAN

## Students:

LOOK AT LAST YEAR'S GAINS AND WHERE WE ARE HEADED AS A CLASS  
GOAL SETTING MEETINGS

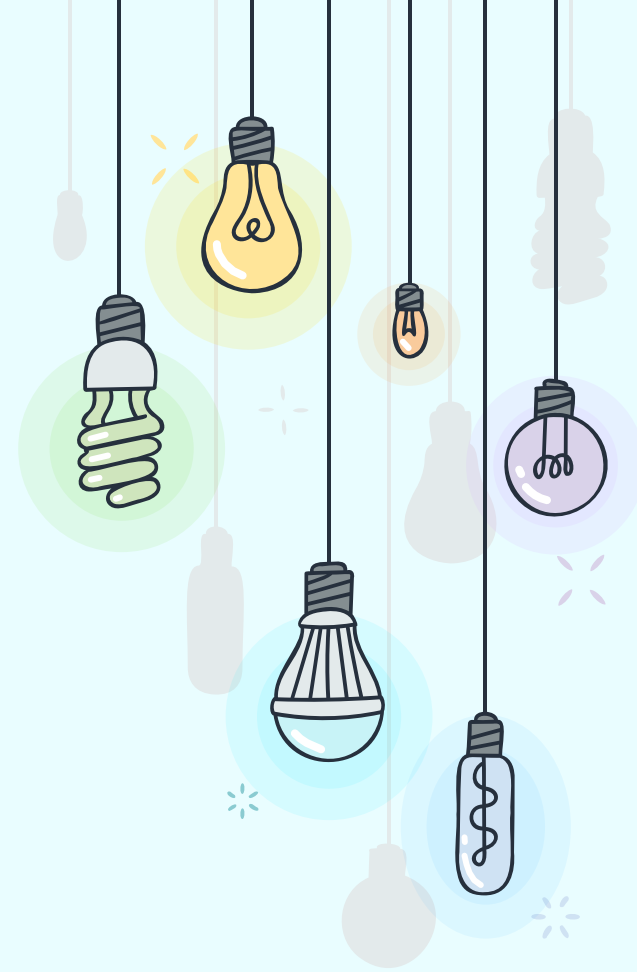
## Families:

INTRODUCTORY VIDEO  
BACK-TO-SCHOOL NIGHT, AND/OR FAMILY NEWSLETTER.  
ONGOING COMMUNICATION FROM TEACHERS & ADMIN



## \* BUILDING VISION

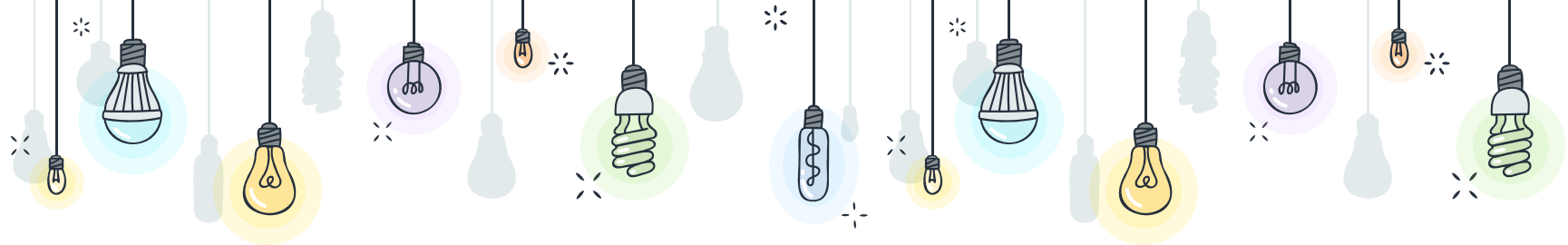
*EACH BUILDING CREATED THEIR OWN VISION FOCUSED ON ACCELERATION RATHER THAN REMEDIATION. THESE VISIONS WERE SHARED AT THE PD DAY WITH TEACHERS THROUGH THE COMMUNICATION PLANS EACH BUILDING CREATED.*



# \* TRAINING AND SUPPORT

- SIP DAYS
- INSTITUTE DAYS
- INDIVIDUAL/TEAM REQUESTS
- SCHOOL-WIDE FOCUSED COLLABORATION CYCLES
  - STAFF MEETINGS
  - EMBEDDED TIME DURING INSTRUCTIONAL DAY
  - 2 MONTHLY PLC AFTER SCHOOL MEETINGS (OPTIONAL)
- DISTRICT PD OPPORTUNITIES
- BUILDING TEACHER LEADERSHIP
- MTSS/PDS/LITERACY SPECIALISTS/TSS
- INDIVIDUAL DATA DISCUSSIONS





**Day 1:** COMMUNICATE ACCELERATION PLAN TO STAFF AND FAMILIES, SHARE AVAILABLE DATA & PROGRESS TO ESTABLISH A BASELINE AND SENSE OF URGENCY, BUT ALSO CELEBRATE THE HARD WORK AND ACCOMPLISHMENTS OF LAST YEAR . UTILIZE DATA TO BEGIN MEETING NEEDS ON DAY 1 OF STUDENT ATTENDANCE.

**Month 1:** ESTABLISH RELATIONSHIPS WITH ALL STAKEHOLDERS. ESTABLISH ROUTINES AND PROCEDURES. CREATE BOOST GROUPS. MANY BUILDINGS ARE INITIATING COLLABORATIVE CYCLES AND SUPPORT. GATHER FRESH DATA AND INITIATE COMMUNICATION PLANS. BEGIN TUTORING AND MTSS SUPPORT WITH URGENCY

**MONITORING AND  
NEXT STEPS**

**Ongoing:** COLLABORATIVE CYCLES WILL SUPPORT INSTRUCTION AND MTSS TO MEET INDIVIDUAL NEEDS OF STUDENTS AND PROVIDE TEACHERS WITH SUPPORT AND TRAINING. MAINTAIN A CONTINUED FOCUS ON DATA DURING THE LEARNING PROCESS, RESULTING IN MORE EFFICIENT USE OF ESSR FUNDS, TUTORING TIMES, AND MEETING NEEDS.

# MTSS UPDATES

## CELEBRATIONS (PBIS)

- TRIMESTER - WHOLE SCHOOL (CELEBRATES STUDENTS)
- CLASSROOM MANAGEMENT, SECOND STEP, & PBIS BUCKS
- ACHIEVEMENT: CELEBRATE DATA, VISUAL DISPLAYS OF PROGRESS (SCHOOL/CLASSROOM), SOCIAL MEDIA, ETC.
- STUDENT FOCUSED AND DRIVEN
- PROUD MOMENTS SHARED THROUGH SEESAW (PICTURES, SHORT VIDEO CLIPS TO PARENTS/FB)

## ACCOMPLISHMENTS

### ACADEMIC ACHIEVEMENTS:

- CURRICULUM RESOURCES THAT ARE HIGH QUALITY AND CONGRUENT TO STATE STANDARDS
- CHANGING MINDSETS OF ASSESSMENT DATA (FROM "OF LEARNING" TO "FOR LEARNING"/GROWTH MINDSET)

### NON-ACADEMIC ACHIEVEMENTS:

- INCREASED STRUCTURES OF SUPPORT
- STUDENTS FELT A STRONGER BELONGING TO THEIR SCHOOL

## ATTENDANCE

- CONCERNS WITH REMOTE AND QUARANTINED STUDENTS - TRUANCY
- POSITIVE - INCREASED RELATIONSHIPS WITH FAMILIES, IDENTIFIED AND MET NEEDS OF FAMILIES, LEARNED HOMELIFE
- STRONGER RELATIONSHIP WITH TRUANCY AS WELL AS KNOWLEDGE OF OUR STUDENTS & COMMUNITY
- THE STAFF EXUDED A SENSE OF URGENCY AND COMMITMENT TO STUDENTS BEING PRESENT
- STRATEGIC RESPONSES

HARLEM MIDDLE SCHOOL

# \* WHAT DOES THE DATA TELL US AT HARLEM MIDDLE SCHOOL

- THE INSTRUCTIONAL LEADERSHIP TEAM
  - ANALYZED CONTENT DATA
  - GRADE LEVEL TRENDS
- OVERARCHING THEME
  - LITERATURE, INFORMATIONAL TEXT
  - NUMBERS AND OPERATIONS, ALGEBRA, AND GEOMETRY



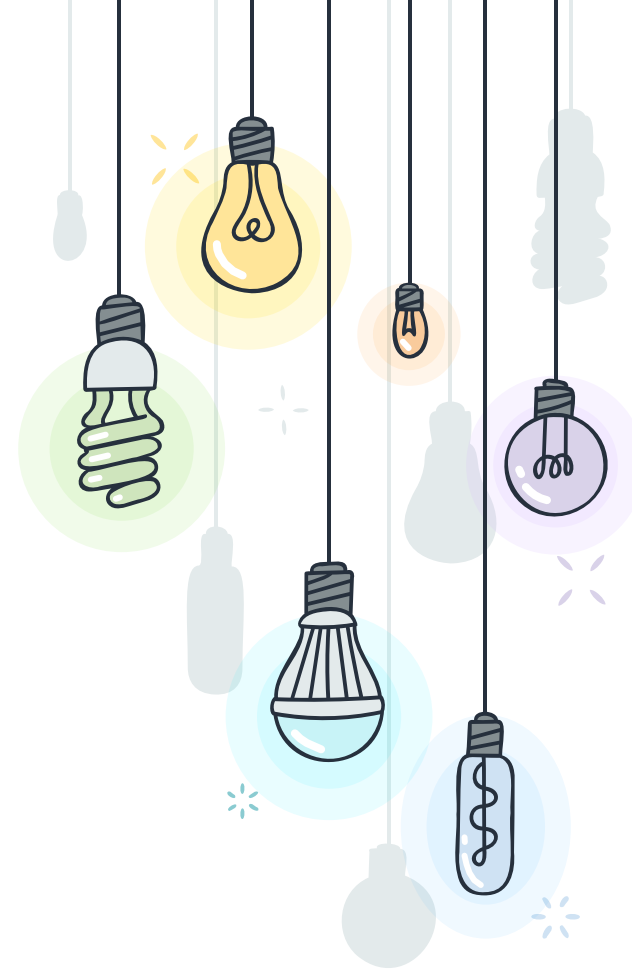
# ✧ HOW ARE WE ADDRESSING THE LEARNING GAPS

## STRATEGIES

EXTENDED SUMMER SKILL BUILDING  
RELATIONSHIP BUILDING  
TEACHING PROCESSES AND PROCEDURES  
FOCUS ON INSTRUCTIONAL GROUPING WITHIN  
CLASSROOM  
START WITH SUCCESS STARTERS  
VOCABULARY DEVELOPMENT

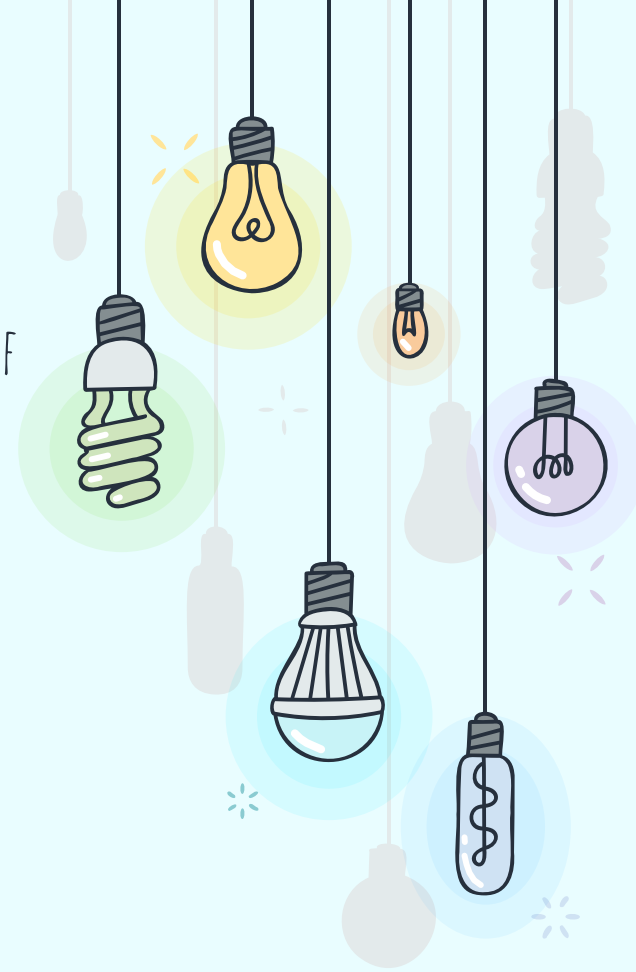
## SUPPORT PERSONNEL

ENRICHMENT TEACHERS  
GUIDANCE COUNSELORS  
SECONDARY STUDENT MENTORS  
ADMINISTRATORS



## \* BUILDING VISION

HARLEM MIDDLE SCHOOL'S VISION IS THAT AS A COLLECTIVE, THE STAFF WILL APPROACH UNFINISHED LEARNING THROUGH ACCELERATION METHODS AND STRATEGIES TO MOVE STUDENTS FORWARD IN THEIR LEARNING PATH.



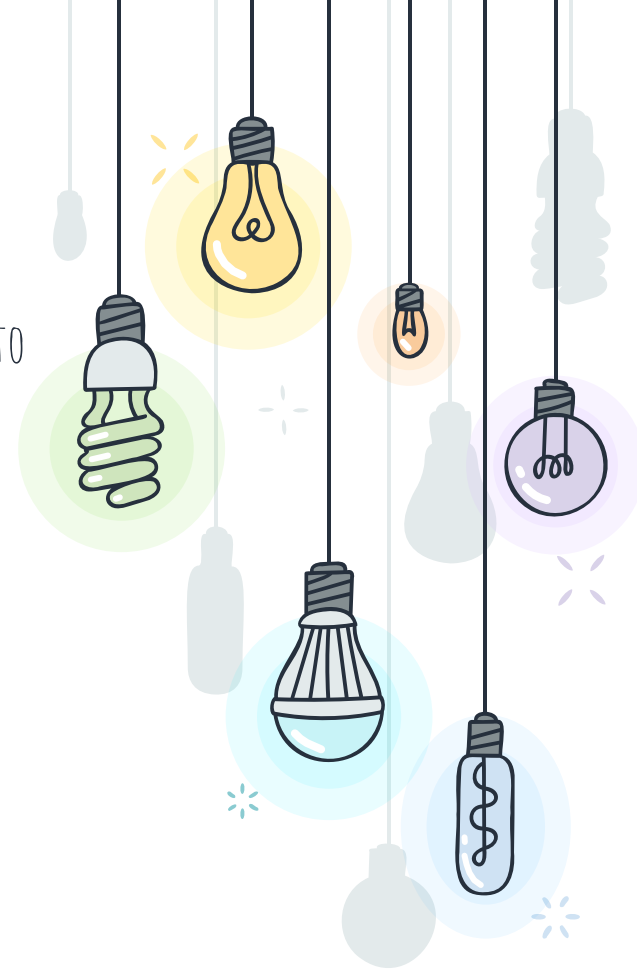


# \* COMMUNICATION PLAN

**Students:** UTILIZING COUNSELORS, STUDENT MENTORS, AND ADMINISTRATORS TO MEET WITH STUDENTS. ENSURING STUDENTS UNDERSTAND LEARNING GOALS.

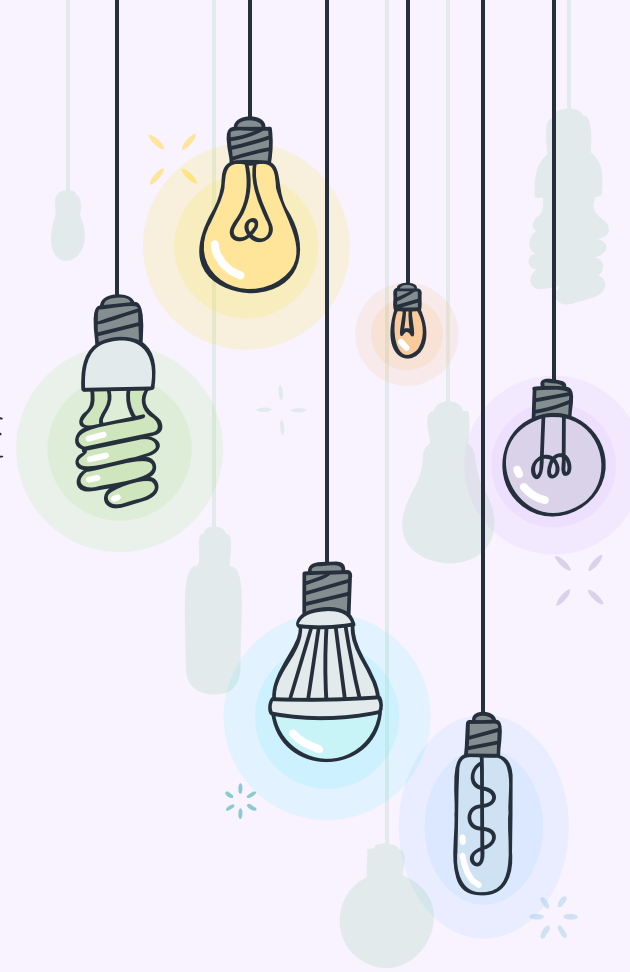
**Families and Community:** DEVELOPED A NEW COMMUNICATION COMMITTEE THAT WILL FOCUS ON STREAMLINING INFORMATION TO ALL STAKEHOLDERS WHICH WILL INCLUDE NEWSLETTERS, FORUMS, SOCIAL MEDIA POSTS, ETC.

**Staff:** BEGAN SHARING INFORMATION ON PD DAY, WILL CONTINUE ON SIP DAY AND THROUGH PLCS



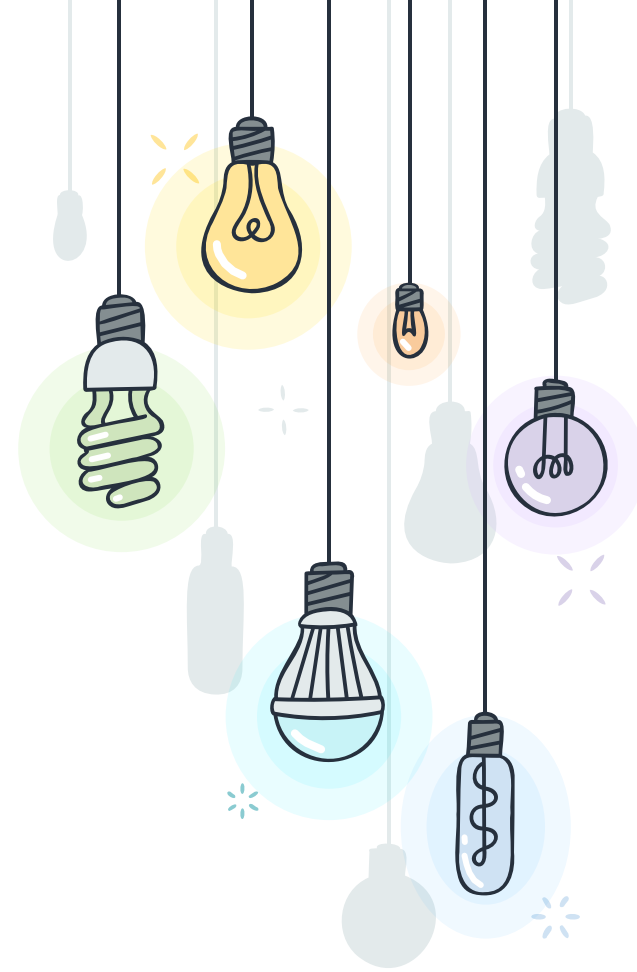
## \* TRAINING AND SUPPORT

- INSTRUCTIONAL LEADERSHIP TEAM (ADMINISTRATORS, DIVISION CHAIRS, PD CADRE, DATA COACHES) OFFER TRAINING AND GUIDANCE ON ACCELERATION.
- FOCUS ON SUCCESS STARTERS, VOCABULARY DEVELOPMENT, SCAFFOLDING FOR GAPS, SELF-EFFICACY (STUDENT MOTIVATION)
- MINDSET SHIFT



## \* MONITORING AND NEXT STEPS

- FREQUENT PROGRESS MONITORING
- REAL TIME FEEDBACK
- ADD EXTRA SOCIAL/EMOTIONAL SUPPORT BOTH THROUGHOUT THE CURRICULUM AND IN SECOND STEP.



# MTSS UPDATES

## CELEBRATIONS (PBIS)

- PAWSITIVE TICKETS
- TEAM BUILDING DAYS

## ACCOMPLISHMENTS

- PLANNING OF WIN TIME "WHAT I NEED"
- SEL LESSONS EXPANDED

## ATTENDANCE

- FOCUS ON CHRONIC ABSENCES
- TRUANCY CONCERNS

HARLEM HIGH SCHOOL

## \* WHAT DOES THE DATA TELL US?

CREDITS EARNED:

TERM 1: 79%

TERM 2: 76.2%

TERM 3: 79.7%

TERM 4: 80.1%

- STUDENTS HAVE EARNED 88.4% OF CREDITS SINCE 2013.
- IN 2018-2019 STUDENTS EARNED AN AVERAGE OF 6.26 CREDITS.
- IN 2020-2021 STUDENTS EARNED AN AVERAGE OF 6.3 CREDITS.



# ✧ HOW ARE WE ADDRESSING THE LEARNING GAPS

## STRATEGIES

EXPANDED SUMMER SCHOOL

CREDIT RECOVERY DURING THE SCHOOL  
DAY

GRADEBOOK ANALYSIS

RELATIONSHIP BUILDING

TEACHING PROCESSES AND PROCEDURES

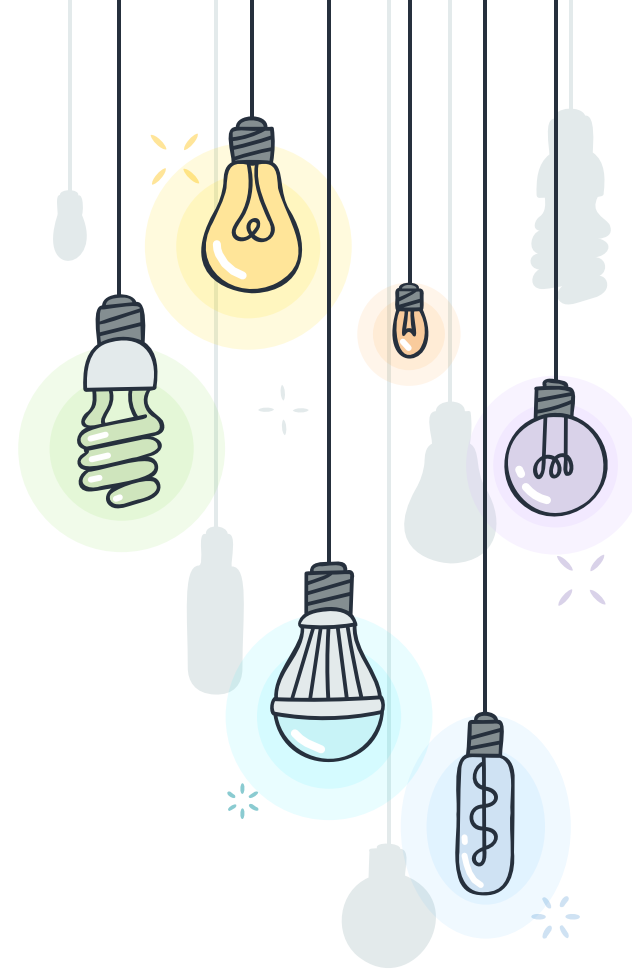
## SUPPORT PERSONNEL

SECONDARY STUDENT MENTORS

GUIDANCE COUNSELORS

ADVISORY TEACHER

ADMINISTRATORS



## \* BUILDING VISION

THE HARLEM HIGH SCHOOL WILL PROVIDE A RIGOROUS, RELEVANT, AND EQUITABLE EDUCATION THAT PREPARES OUR STUDENTS ACADEMICALLY, SOCIALLY, AND EMOTIONALLY FOR THE CHALLENGES AND OPPORTUNITIES OF HIGH SCHOOL AND BEYOND. WE ARE COMMITTED TO INSPIRING OUR STUDENTS TO BE LIFELONG LEARNERS. WE ARE COMMITTED TO PROVIDING A SAFE, SUPPORTIVE ENVIRONMENT WHERE STUDENTS CAN EXPRESS THEIR CREATIVITY WHILE ALSO BEING EXPOSED TO TECHNOLOGY THAT HELPS TO ENRICH THEIR ACADEMIC EXPERIENCES.





# \* COMMUNICATION PLAN

**Students:** ADVISORY TIME

MEETINGS WITH COUNSELORS, STUDENT MENTORS,  
AND ADMINISTRATORS

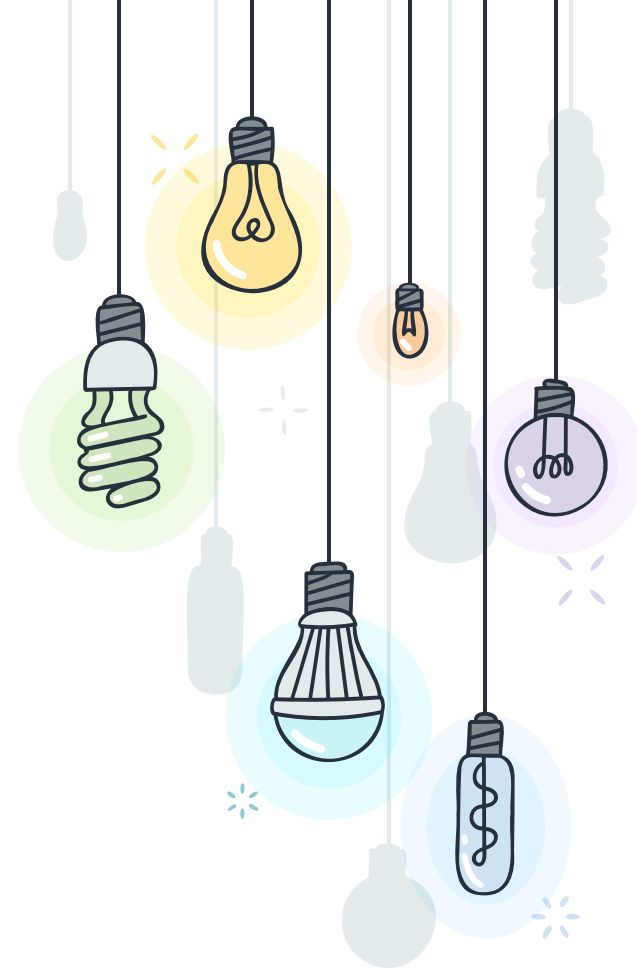
**Families:** WEEKLY NEWSLETTERS STARTED AUGUST 2ND

BI-WEEKLY VIDEO RELEASES STARTED AUGUST 9TH

REGULAR SOCIAL MEDIA POSTS

**Staff:** STARTED INITIAL DISCUSSIONS ON PD DAY

FOLLOW-UP AT SIP DAY AND STAFF MEETINGS



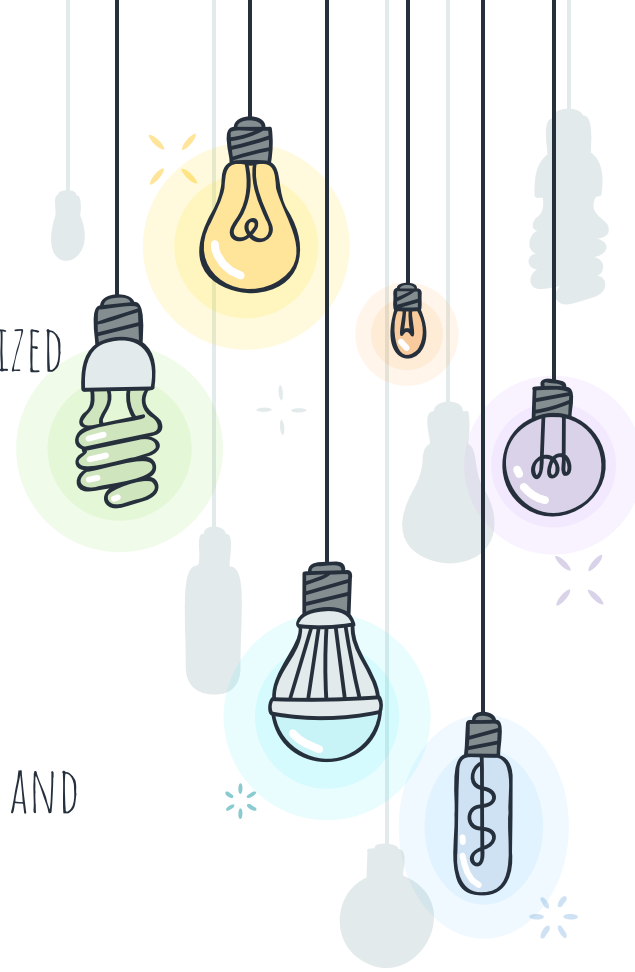
## \* TRAINING AND SUPPORT

- INSTRUCTIONAL LEADERSHIP TEAM (ADMINISTRATORS, DIVISION CHAIRS) OFFER TRAINING AND GUIDANCE ON ACCELERATION THROUGHOUT THE YEAR.
- ILT ALONG WITH PD CADRES AND DATA COACHES OFFER TRAINING AND SUPPORT ON PD AND INSTITUTE DAYS.



## \* MONITORING AND NEXT STEPS

- IDENTIFY STUDENTS WHO ARE CREDIT DEFICIENT AND BUILD PERSONALIZED PLANS INCLUDING ADVOCACY FROM COUNSELORS, ADVISORY TEACHERS, AND STUDENT MENTORS.
- ADD EXTRA SOCIAL/EMOTIONAL SUPPORT BOTH THROUGHOUT THE CURRICULUM AND IN ADVISORY.
- CONTINUAL MONITORING OF STUDENT ACHIEVEMENT, ATTENDANCE, AND BUILDING CLIMATE.



# MTSS UPDATES

## CELEBRATIONS (PBIS)

- PRIDE CARDS
- LUNCH ACTIVITIES
- PRIDE STICKERS

## ACCOMPLISHMENTS

- PRIDE CARDS - GPA INCENTIVE

## ATTENDANCE

- FOCUS ON TARDIES
- BI-WEEKLY RECOGNITION
- QUARTERLY REWARDS

## TIERS 2 AND 3

- INDIVIDUALIZED SUPPORT FROM ADVISORY TEACHERS, COUNSELORS, AND ADMINISTRATORS

# ADVANCED PLACEMENT DATA (AP)



# \* AP COURSES OFFERED

BIOLOGY

CHEMISTRY

CALCULUS AB

CALCULUS BC

ENVIRONMENTAL SCIENCE

GOVERNMENT

HUMAN GEOGRAPHY

LANGUAGE AND COMPOSITION

LITERATURE AND COMPOSITION

MUSIC THEORY

PHYSICS

PSYCHOLOGY

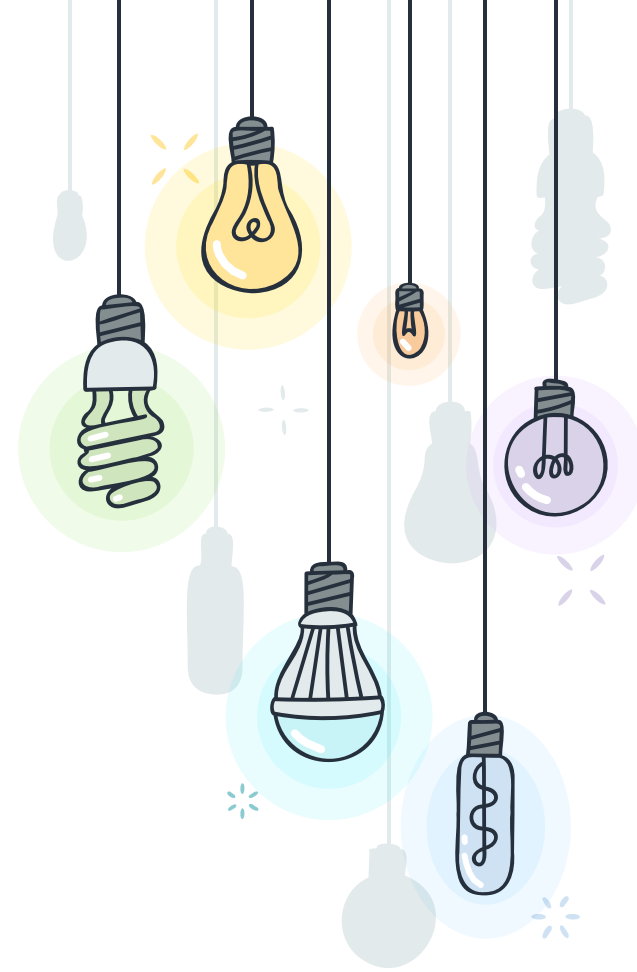
SPANISH

STATISTICS

STUDIO ART

UNITED STATES HISTORY

WORLD HISTORY



## \* AP EXAM DATA

1. 243 STUDENTS TOOK 402 AP EXAMS.
2. 173 SCORES EARNED COLLEGE CREDIT.
3. OUR FIRST CALCULUS BC CLASS HAD A 92% PASS RATE AND AN AVERAGE SCORE OF 3.83.
4. HUMAN GEOGRAPHY, GOVERNMENT, AND STUDIO ART SAW INCREASES IN AVERAGE SCORE OVER 2020.
5. 2022 AP ENROLLMENT IS 91% OF 2019 NUMBERS.

\*THIS IS EARLY DATA AS SCORES FROM US HISTORY, WORLD HISTORY, AND STUDENTS TESTING IN WINDOWS 2 & 3 ARE NOT YET AVAILABLE.

