



INLAND EMPIRE 

CHILDREN'S CABINET

Presentation to:
First 5 Riverside County
Children and Families Commission

July 2025

The Cabinet's Origins

- The Inland Empire Children's Cabinet is a regional initiative that launched in 2021 to improve outcomes for children and families.
- It currently includes 196 sector leaders representing 129 organizations focused on **systems change**, **equity** and **collaboration**.
- It is governed by a Partner Table that meets quarterly, and its efforts are driven by four Committees.

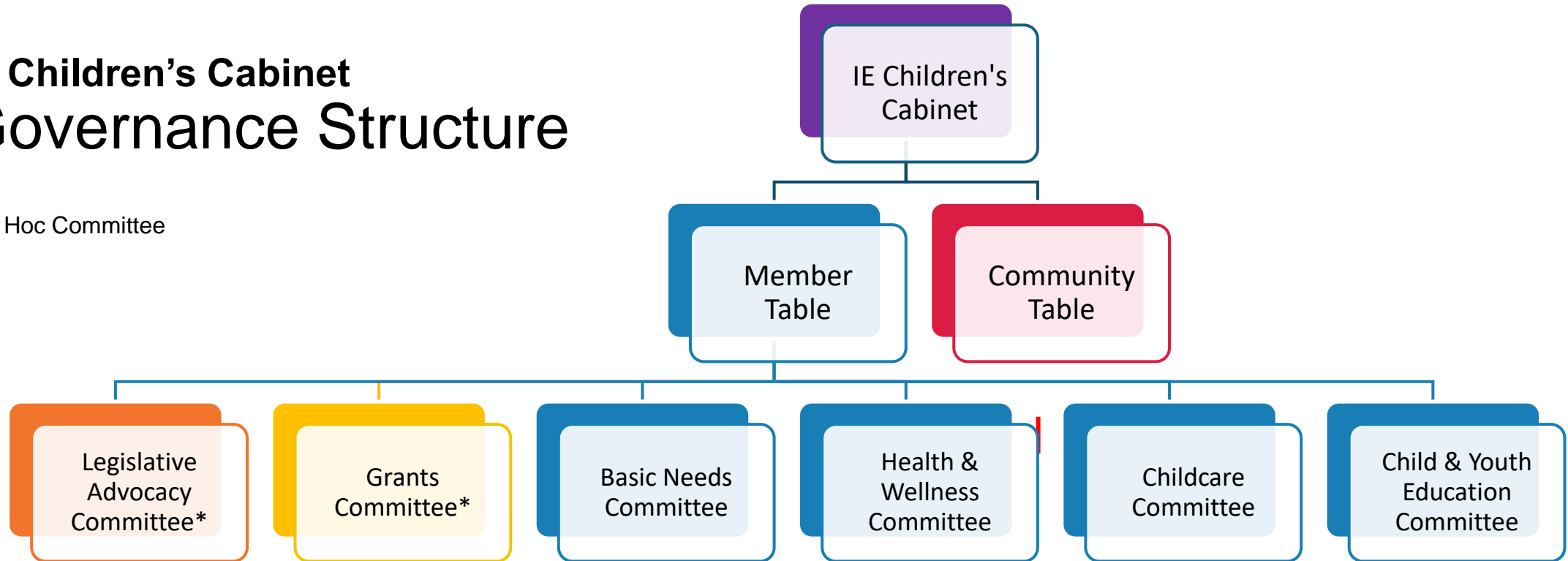


Mission: This two-county Children's Cabinet will support children, youth, and families and improve the ability to advance health and racial equity in our communities.

The Overall Cabinet Structure

IE Children's Cabinet Governance Structure

*Ad Hoc Committee



Member Table is made up of nonprofit and government programming representatives.

Community Table is made up of parents, youth, and community members.

Key Achievements Since Launch

Leveraging Funds to Expand Supports for Children and Families

The Cabinet has been instrumental in securing funding to support the region's children and families.

- Ongoing identification of grant opportunities (through the monthly **grants bulletin**) to expand services for children and families.
- Establishment of **collaborative grant applications** using a skilled grant writer (Andrea Mitchel, of AM Development Gro).



**\$5.5
MILLION**

**Secured collaborative grant
funding achieved to date**

Key Achievements Since Launch

Advocating for Just and Equitable Practices

The Cabinet advocates for local and state policy changes that support children and families. Examples include:

- The development of a **legislative tracker** to track legislation that impacts children and families.
- **Legislative advocacy** for improvements in funding mechanism and workforce supports for childcare.
- Working to **address policies** that restrict access to care, such as the same-day exclusion policies in healthcare systems that prevent children from receiving mental health services on the same day as other medical services.

What is Next...

Supporting Systems Change Efforts in the Region

The Children's Cabinet has consistently advocated for systems change to improve the delivery of services to children and families.

A key systems change effort the Council will be working on involves collaborating on the design for **integrated service delivery** in Riverside County. Efforts to integrate service delivery in Riverside County focus on transforming the traditionally fragmented system by coordinating prevention and early intervention services, ensuring more effective and equitable support for children and families.



What is Next...

Establishment of a Community Table

The Community Table is a vital addition to the IE Children's Cabinet, designed to amplify the voices of parents, caregivers, and community leaders in shaping policies and services.

Key benefits of the Community Table include:

- Create a space where **parents and caregivers can directly influence decisions** that impact their children's wellbeing.
- Strengthen the Cabinet's **connection with the communities** it serves by ensuring diverse, grassroots input into policy and program development.



Value of a Community Table

Why the Community Table Matters

- ***Empowerment through Representation:*** Ensures that parents have an equal seat at the table, empowering them to advocate for their children's needs and the community's priorities.
- ***Enhancing Policy Relevance:*** Direct parent involvement ensures that policies and programs reflect the lived experiences and real needs of families.
- ***Improved Service Delivery:*** A more inclusive approach leads to better-targeted interventions and resource allocation that address the most pressing challenges in communities.
- ***Civic Engagement & Advocacy:*** Parents are trained and encouraged to participate in advocacy efforts, influencing local, state, and federal decisions that affect their children and families.

Funding Partners

We are deeply grateful to our current/former funders whose contributions make it possible for the Children's Cabinet to continue its vital work, **transforming systems, advocating for children,** and **empowering communities** throughout the Inland Empire:

- **First 5 Riverside County**
- **First 5 San Bernardino**
- **State of California – All Children Thrive (ACT)**
- **Gates Foundation**
- **Weingart Foundation**
- **The California Wellness Foundation**
- **PolicyLink**





Thank You!

From the Inland Empire Children's
Cabinet and the Inland Empire
Community Collaborative

