

Parent Community Outreach Program Surplus items from child care

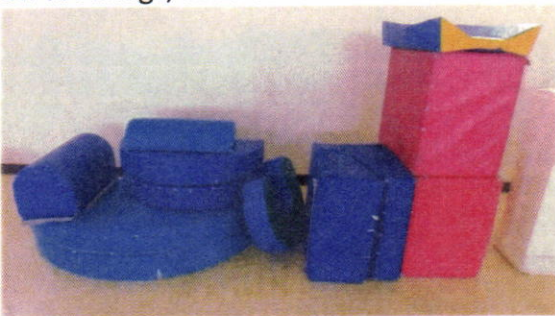
*tall, brown rolling computer desk; used condition; unknown make/model #



*Little Tikes plastic kitchen unit; used condition; unknown model #



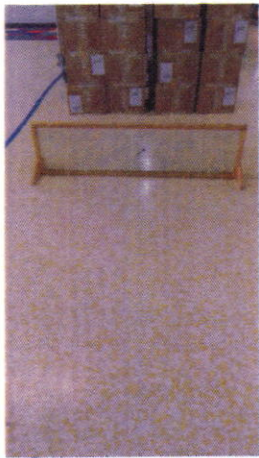
*12 pc multi-color foam mats/blocks; unknown make/model#; foam intact with significant wear on coverings; used condition



*Environments wooden doll bed; used condition; unknown model #



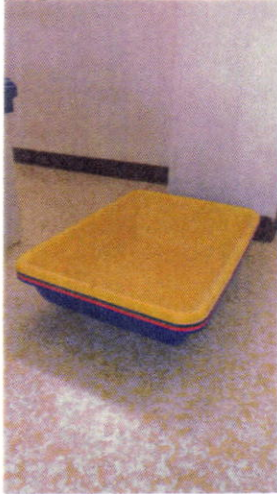
*infant mirror stand; used condition; unknown make/model #



*wooden easel; used condition; unknown make/model #



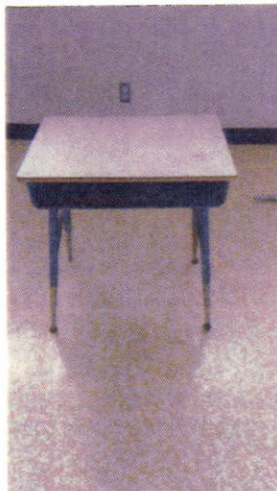
*Edushape LTD 4 pc large shallow bins, primary colors; good condition; unknown model #



*Foundations 2 pc high chair set, blue/gray, both broken; poor condition; unknown model #



*student metal desk; used condition; unknown make/model #



*Toshiba TV/DVD combo, Model #MD13Q11; Serial #QTX8802 (30A56921A); works? Condition?



*Sony CD/Radio/Cassette player; blue color, model #CFD-S20CP; poor condition; does not work



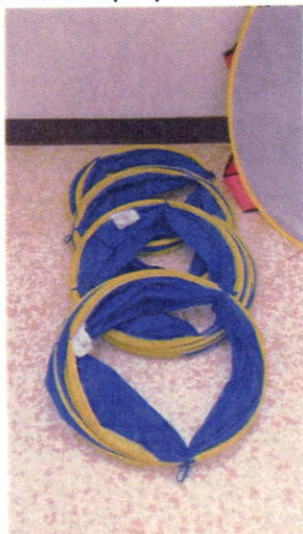
*Memorex CD/Radio player; black color, model #MP8806, poor condition; does not work



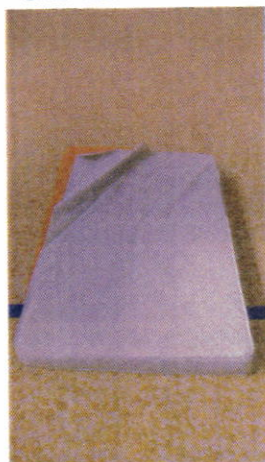
*Pacific play tents, 2 pcs, used condition; missing braces; Item # 20460



*Pacific play tunnels; 4 pcs, used condition; Item #20455



*crib foam mattress, torn plastic cover; used condition; unknown make/model #



*stick horse, fair condition; unknown make/model #



*Tonka Chuck dumptruck, used condition, #12231



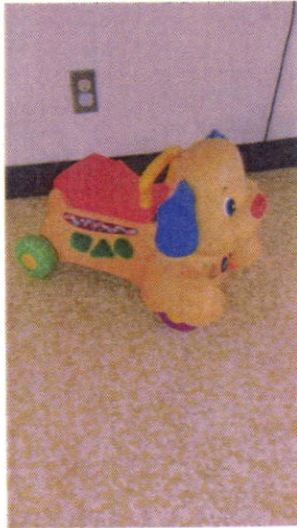
*Step 2 Townhouse Laundry Center, used condition; unknown model #



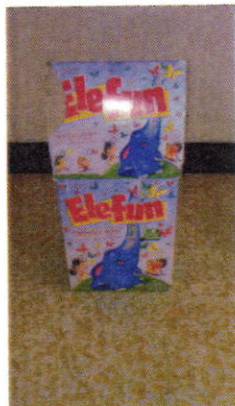
*Disney Mickey Mouse toddler rider/rocker; # 0107009; fair condition



*Mattel Puppy toddler ride-on with wheels; missing shapes accessories; #W9740; fair condition



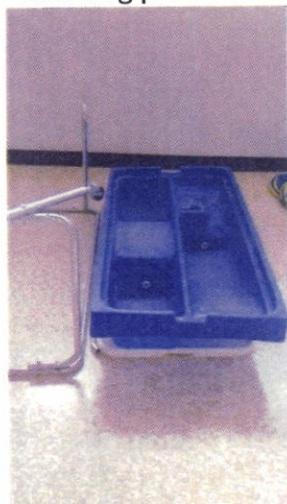
*Hasbro Elefun game; missing one butterfly net and all butterflies; used condition,
#7693040838



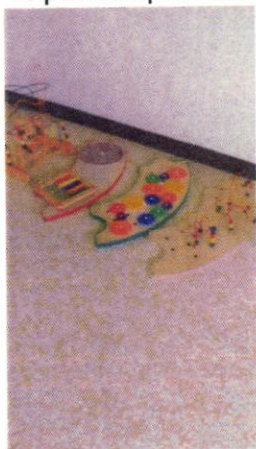
*Set of 9 toddler sleeping mats, blue; used condition: unknown make/model #



*Learning products sand/water table with lid; broken stand; used condition; unknown model #



*4 pc manipulative (wall mountable?) play set; good condition; unknown make/model #



*Little Tikes, pink plastic toddler chair, used condition; unknown model #



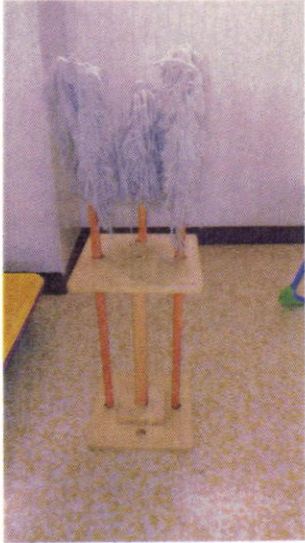
*Step 2, kitchen center; fair condition; #7678



*Toddler Chairs, 18 pc classroom set, primary colors, good condition, patent #D-230452



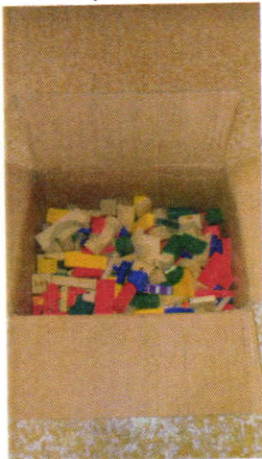
*Lakeshore toy mops (#3 count) with wooden stand; used condition; unknown model #



*Fisher Price Baby Gymnastic jumpy chair; used condition; unknown model #



*100+ pc small wooden blocks; fair condition; unknown make/model #



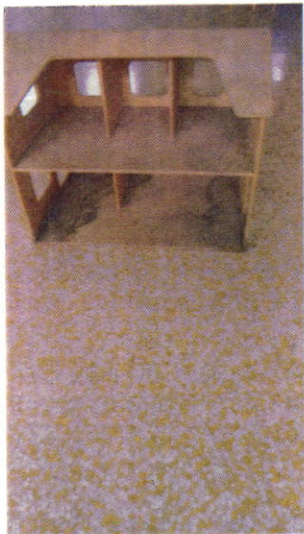
*6 pc wooden toddler kitchen set, blue, fair condition; unknown make/model #



*Environments wooden steps; used condition; unknown model #



*wooden doll house; used condition; unknown make/model #



*Fisher price infant bouncy chair; yellow/blue/jungle animals; used condition; unknown model#



*Bright Starts infant bouncy chair; blue with frog/turtle/duck; used condition; unknown model#



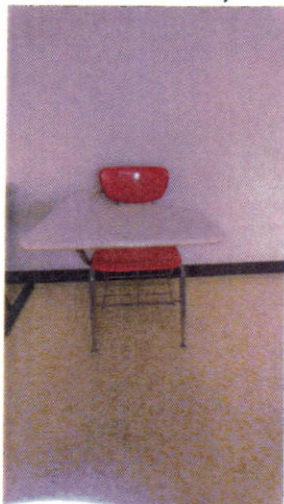
*Bright Starts infant bouncy chair; green with giraffes; used condition; unknown model#



*toddler wooden picnic table; used condition; unknown make/model #



*student chair w/attached desk; used condition; unknown make/model #



*table, used condition; unknown make/model #

