

## Stevenson High School

QTY	DESCRIPTION	SEATS	RISE	SPAN
Bank #1	12 Row Friction Power Wall Attached 108'-7 1/2" W/ 10" Excel Seat Module -00 TBE	722	11.5	22
4	12 Row Foot Level Aisles W/ Self-Storing F-Rail			
4	12 Row Intermediate Steps			
7	1 Row Recoverable 3'-0 1/4" Notchout			
Bank #2	12 Row Friction Power Wall Attached 108'-7 1/2" W/ 10" Excel Seat Module -00 TBE	722	11.5	22
4	12 Row Foot Level Aisles W/ Self-Storing F-Rail			
4	12 Row Intermediate Steps			
8	1 Row Recoverable 3'-0 1/4" Notchout			

NOTES:

TOTAL SEATS

1444

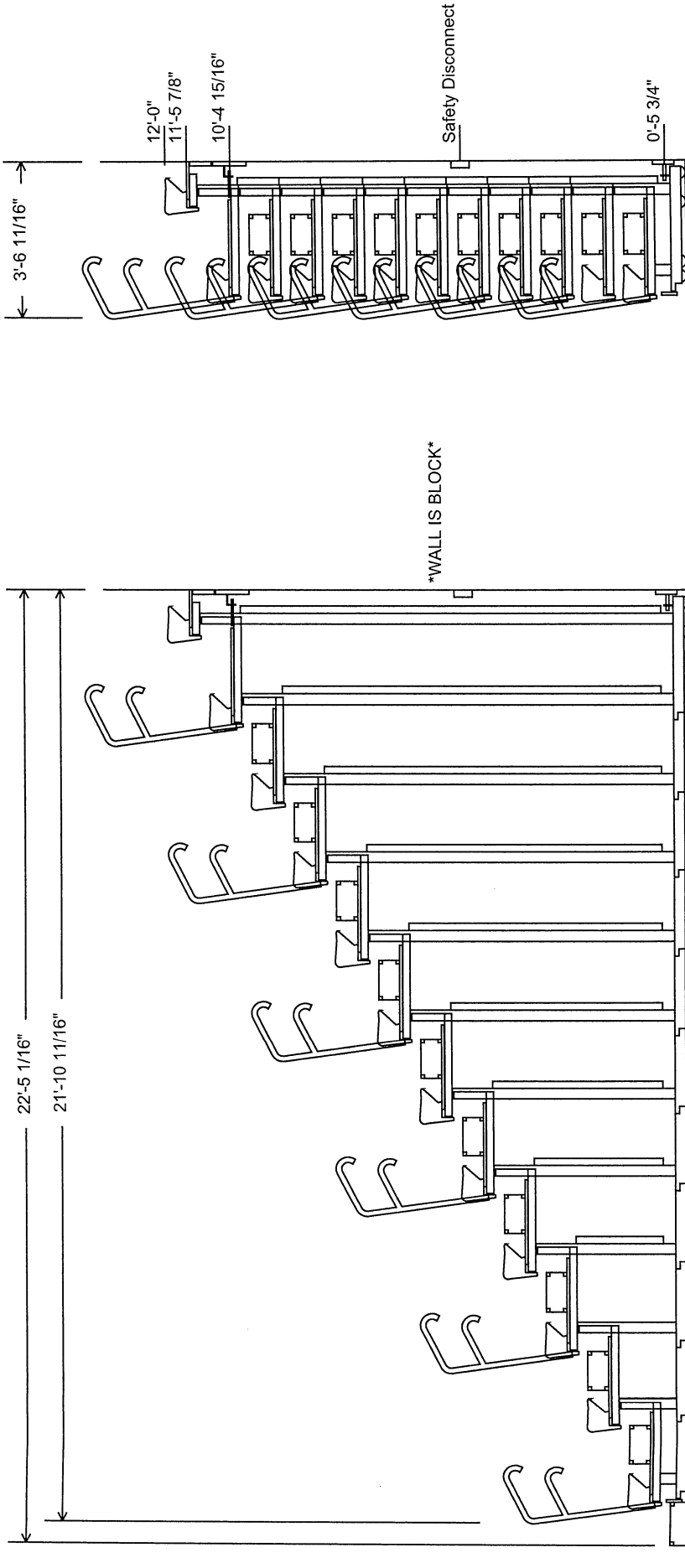


5981 East Cork Street, PO Box 2107, Kalamazoo, MI 49003-2107  
telephone (269) 349-1521 fax (269) 349-6530



# Stevenson High School

Bank 1 - 108'-7 1/2" Friction Power  
 Building Code: IBC 2015  
 12 Row - 22 Span - 11.5 Rise - Wall Attached  
 722 seats (EM 10)  
 9'-1 3/4" Court To Step Dimension  
 9'-8 1/8" Court To First Row Dimension



\*FLOOR IS WOOD FLOATING\*

\*WALL IS BLOCK\*

Drawings produced by this program are only as good as the information provided. These drawings are PRELIMINARY only. All drawings are subject to internal approval for design and construction capability.  
 Printed: January 9, 2016 12:22:0



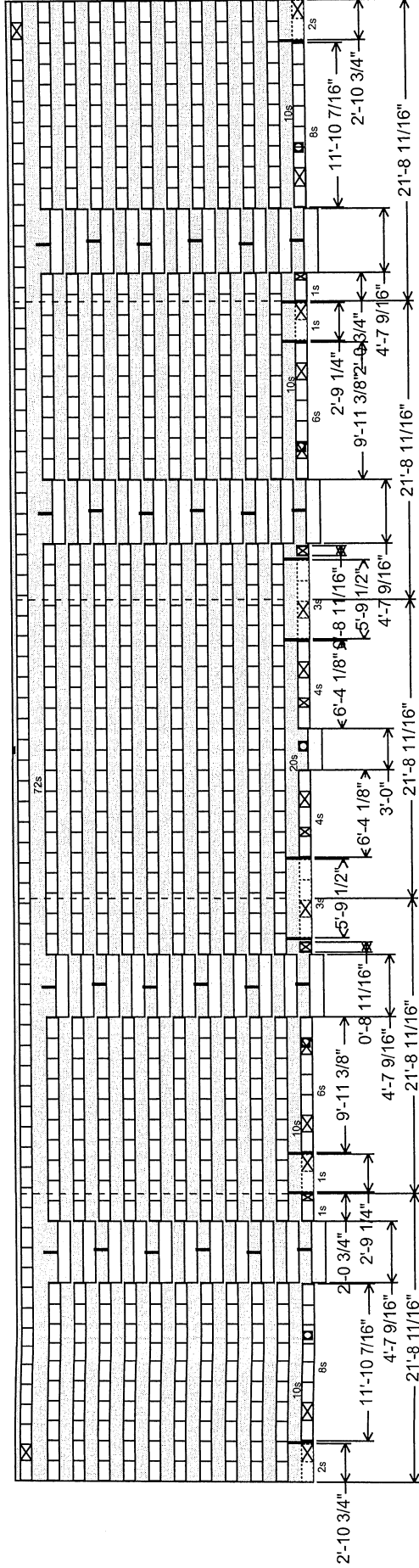
5981 East Cork Street, PO Box 2107, Kalamazoo, MI 49003-2107  
 telephone (269) 349-1521 fax (269) 349-6530

Side Elevation View A1

# Stevenson High School

Bank 2 - 108'-7 1/2" Friction Power  
 Building Code: IBC 2015  
 109'-0 1/2" Clear Dimension  
 12 Row - 22 Span - 11.5 Rise  
 722 seats (EM10)

- POWER REQUIREMENTS:**
1. Wiring and non-fusible safety switch(es) suitable for the line voltage to be provided by electrical contractor or others with branch circuit protection to each not exceeding 15 amps.
  2. Branch circuit protection devices by others to be accessible when platforms are closed.
  3. Verify electrical information:  
 Circuit 3 Phase, 208-230 Volts, 60 Hertz.  
 Each 1/2 Horse Power Motor Draws 2.0-2.2 amps. Full Load.  
 Motors run simultaneously.
  4. Junction box(es) by electrical contractor to be mounted at locations TBD, 5' AFF.  
 Typical location shall be at section joints.

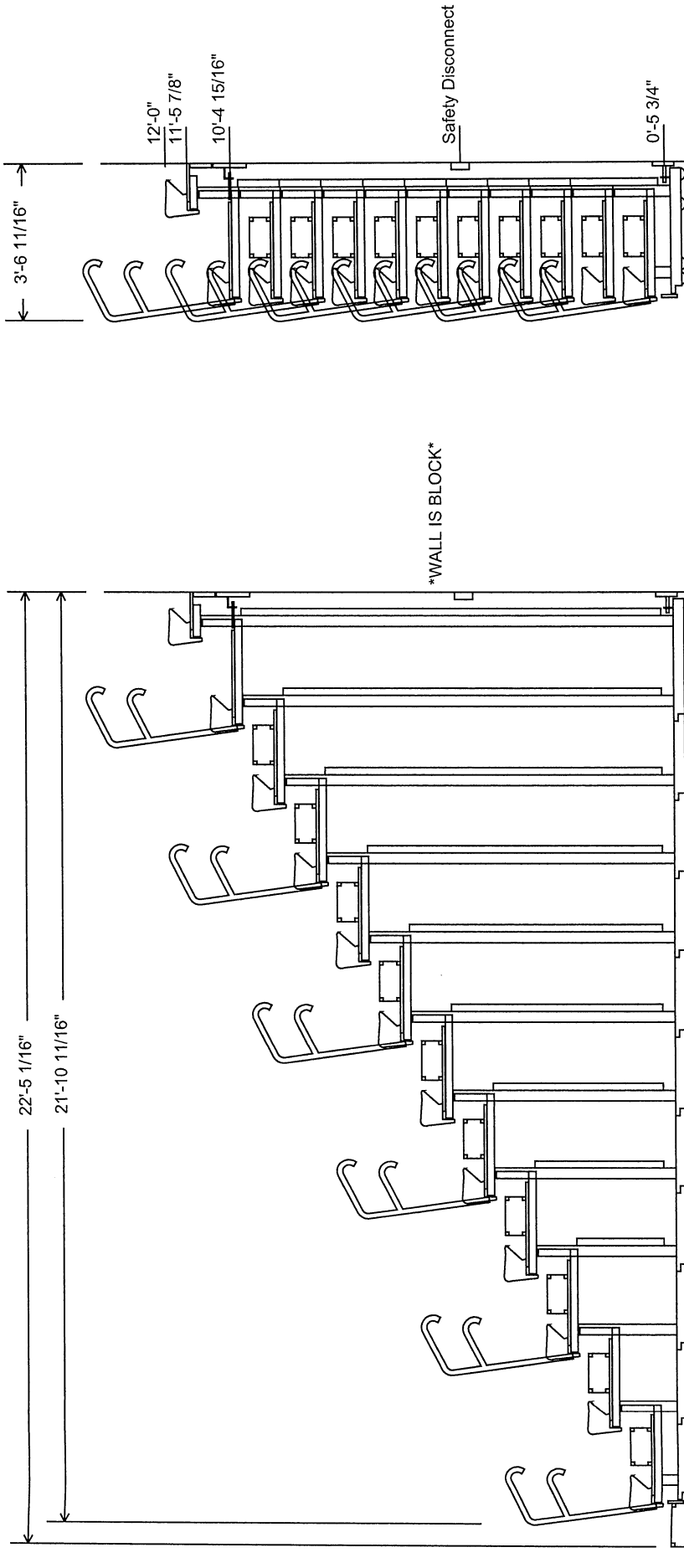


5981 East Cork Street, PO Box 2107, Kalamazoo, MI 49003-2107  
 telephone (269) 349-1521 fax (269) 349-6530

Drawings produced by this program are only as good as the information provided. These drawings are PRELIMINARY only.  
 All drawings created are subject to Interkal approval for design and construction capability.  
 Printed: January 9, 2016 YZ2.0

# Stevenson High School

Bank 2 - 108'-7 1/2" Friction Power  
 Building Code: IBC 2015  
 12 Row - 22 Span - 11.5 Rise - Wall Attached  
 722 seats (EM10)  
 8'-11 1/16" Court To Step Dimension  
 9'-5 7/16" Court To First Row Dimension



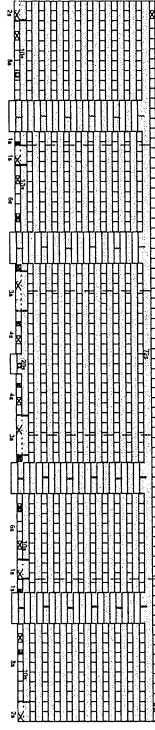
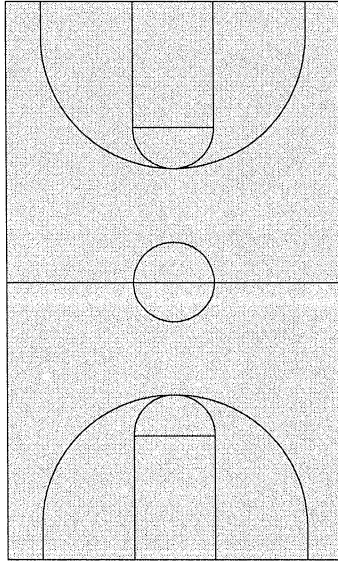
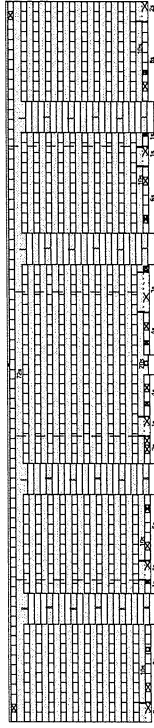
5981 East Cork Street, PO Box 2107, Kalamazoo, MI 49003-2107  
 telephone (269) 349-1521 fax (269) 349-6530

Drawings produced by this program are only as good as the information provided. These drawings are PRELIMINARY only.  
 All drawings created are subject to Interkal approval for design and construction capability.  
 Printed: January 9, 2018 v2.2.0

# Stevenson High School

Gymnasium 1

Building Code: IBC 2015



5981 East Cork Street, PO Box 2107, Kalamazoo, MI 49003-2107  
telephone (269) 349-1521 fax (269) 349-6530

Drawings produced by this program are only as good as the information provided. These drawings are PRELIMINARY only.  
All drawings created are subject to Interkal approval for design and construction capability.  
Printed: January 9, 2018 v2.2.0