



ALEDO ISD BOARD MEETING TEMPLATE

MEETING DATE: July 20, 2015

AGENDA ITEM: Consider Approval of Schematic Design for Coder Elementary Controlled Entry Additions and Renovations Project

PRESENTER: Earl Husfeld

ALIGNS TO BOARD GOAL(S): Financial/Facilities – The District shall exhibit excellence in financial and facility planning, management, and stewardship.

BACKGROUND INFORMATION:

- The Coder Elementary Controlled Entry Additions and Renovations Project was included within the safety and security component of the District's successful 2015 Bond Election.
- Conceptual plans for this project were discussed and reviewed by the AISD 2025 Committee on a number of occasions.

ADMINISTRATIVE CONSIDERATIONS:

- After several planning/design meetings with the campus principal, Ms. Amy Sadler, the schematic design on the following pages is a "refinement" of the conceptual plans reviewed by the AISD 2025 Committee.
- Representatives from VLK Architects are in attendance this evening to present the schematic design to you and answer any questions you may have concerning this project.

FISCAL NOTE:

There is no fiscal impact with approval of this item. The financial impact will arise when the Board of Trustees approve a contract for the construction of this project.

ADMINISTRATIVE RECOMMENDATION:

The Administration recommends the Board of Trustees approve the schematic design for the Coder Elementary Controlled Entry Additions and Renovations Project as presented.



CODER ELEMENTARY SCHOOL

CONTROLLED ENTRY & ADDITION

SCHEMATIC DESIGN



VLK | ARCHITECTS

ALEDO ISD DESIGN TEAM	01
OBJECTIVES	02
EXISTING OVERALL FLOOR PLAN	03
NEW OVERALL FLOOR PLAN	04
NEW ADMINISTRATION SUITE	05
RECLAIMED RENOVATED SPACES	06
PROJECT SCHEDULE	07



CODER ELEMENTARY SCHOOL

CONTROLLED ENTRY & ADDITION - SAFETY AND SECURITY 

Dr. Derek City	Superintendent
Amy Sadler	Principal @ Coder Elementary
Leonard Torres	Director of Maintenance
Earl Husfeld	Chief Financial Officer



CODER ELEMENTARY SCHOOL

CONTROLLED ENTRY & ADDITION - SAFETY AND SECURITY 



NEW ADMINISTRATION SUITE & CONTROLLED ENTRY

- New Controlled Entry for all visitors to the campus.
- Entry will be restricted to a single point of access.
- Staff will have visual contact with visitors through video cameras placed at the exterior doors.
- Visitors will be buzzed in by staff to be able to enter the building.
- Visitors will then enter the reception area to check in before they are permitted to enter the school. Staff will buzz visitors into the school.
- Reclaim the existing space left from the existing administration suite for other campus programs.
- New Administration Suite to meet the district's elementary school education specifications.

MUSIC & GYMNASIUM STORAGE

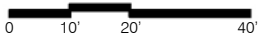
- Reclaim space from the existing Clinic for new Music and Gymnasium Storage
- Convert the existing restroom to a staff restroom with access from the corridor.



EXISTING OVERALL FLOOR PLAN - 03

EXISTING

SPACE TO BE RENOVATED



CODER ELEMENTARY SCHOOL

CONTROLLED ENTRY & ADDITION - SAFETY AND SECURITY 



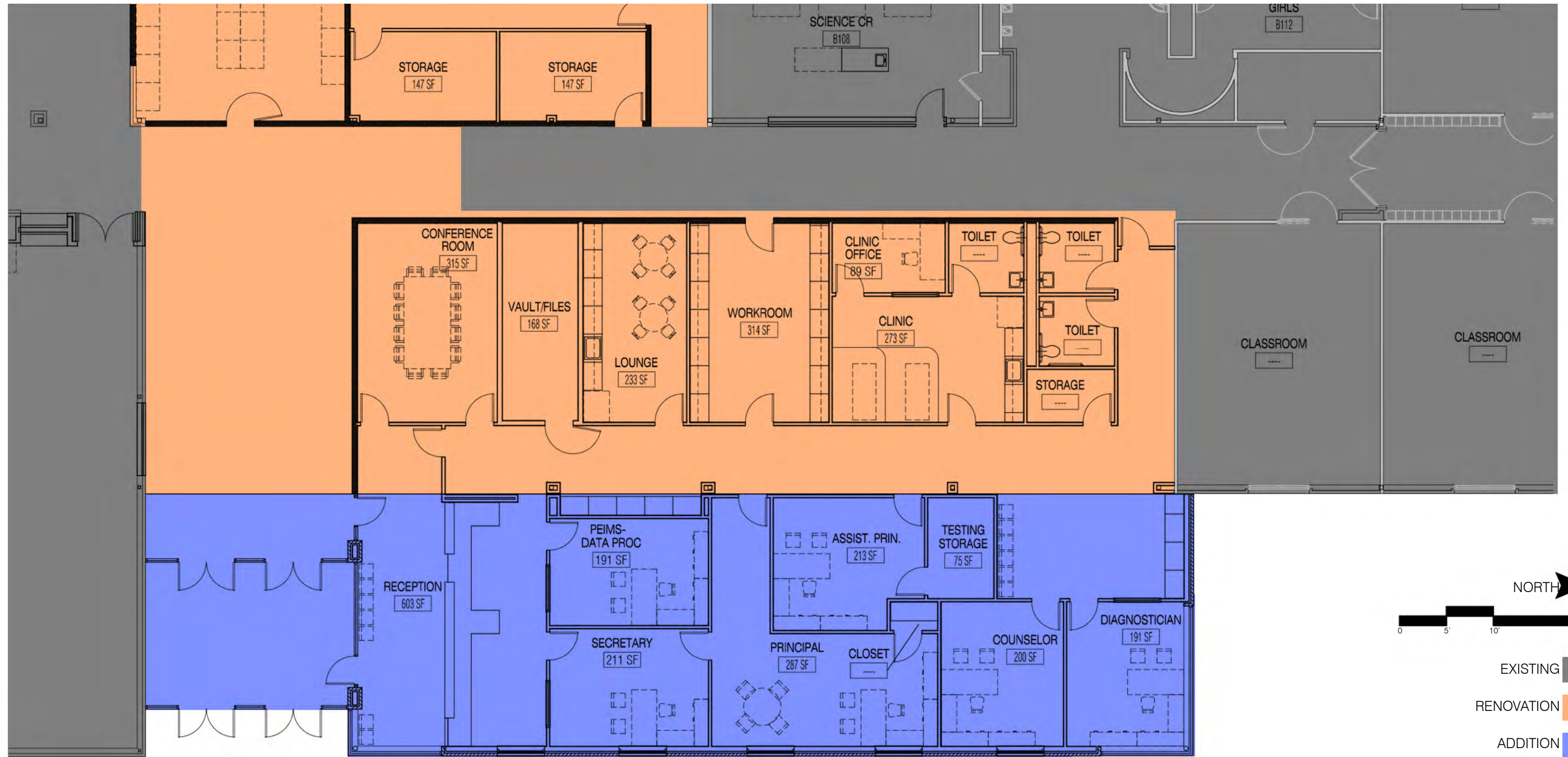
- EXISTING
- RENOVATION
- ADDITION



CODER ELEMENTARY SCHOOL

CONTROLLED ENTRY & ADDITION - SAFETY AND SECURITY

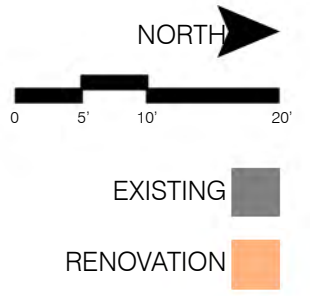




CODER ELEMENTARY SCHOOL

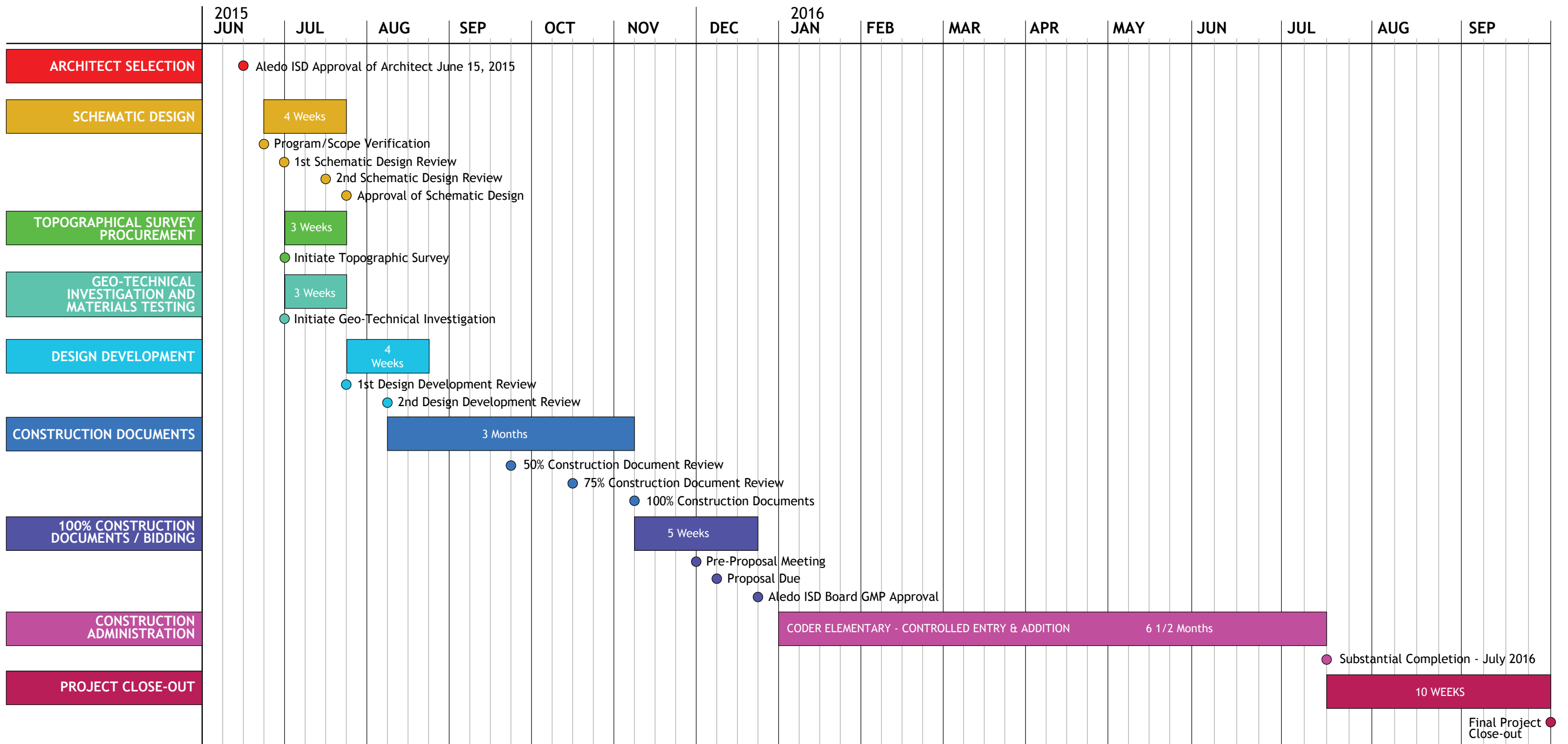
CONTROLLED ENTRY & ADDITION - SAFETY AND SECURITY 





CODER ELEMENTARY SCHOOL

CONTROLLED ENTRY & ADDITION - SAFETY AND SECURITY 





THANK YOU!



VLK | ARCHITECTS