



**EAST AURORA**  
SCHOOL DISTRICT 131

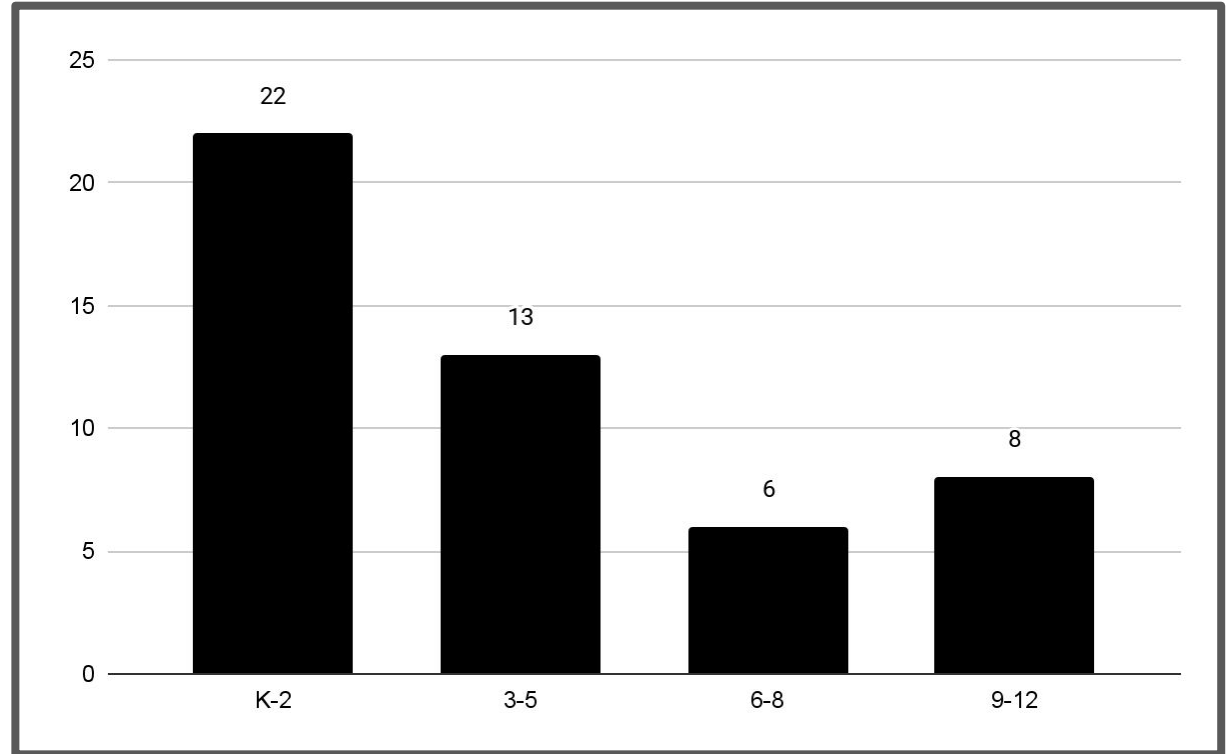
# Curriculum Board Presentation

## International Newcomer Center

Dr. Rita Guzman  
Dr. Ami Engel

## Current Data

- Students enrolled after **last day of school 2024**
- HLS indicate language other than English/Spanish



## Program Goals



- Increased understanding of **schooling** in the US and East Aurora
- Increased **understanding of English** phonology, morphology, and high frequency words
- Increased **social emotional competence**

# Placement Requirements

Entry	Exit
Birth Country other than US	90 days of enrollment in East Aurora*
Home Language Survey indicating languages other than English/Spanish at home	
Less than 90 days of enrollment at <u>any</u> US school	
WIDA Screener score below 3.0	

\*students can exit the program early if they reach proficiency sooner

# Assessments

Entry	Exit	Home School
SEL Screener		Grade level Local/State and ACCESS assessments with peers
iReady Diagnostic		
Language Arts		

# Elementary Schedule

Content Area	Instructional Routines	Time per Day
Social Emotional Learning	Whole Group Learning Small Group Learning	70 minutes
Technology	Whole Group Learning	30 minutes
Language Arts	Small Group Stations High Frequency Words Phonics Read Aloud Shared Writing	150 minutes
Math	Small Group Stations	40 minutes
Specials	*with grade level peers*	30-60 minutes
Lunch with Recess	*with grade level peers*	50 minutes



# Curricular Resources

Content Area	Elementary Programming
Social Emotional Learning	Modified Second Step Units
Technology	Modified <a href="#">Tech Units</a>
Language Arts	<b>Small Group Stations:</b> Okapi <b>High Frequency Words:</b> Homegrown Pacing and Activities <b>Phonics:</b> <a href="#">Words Their Way</a> <b>Shared Reading &amp; Writing:</b> <a href="#">TCM Untold Stories</a>
Math	iReady

# Weekly Field Trip Ideas



- Library (Focus: community involvement)
- Grocery store (Focus: local foods, currency)
- Park District (Focus: community involvement)
- **Home School (Focus: building relationships)**
- Phillip's Park/Red Oak Nature Center (Focus: local environment, seasonal preparedness)
- Aurora Fire Museum/Fire Station (Focus: fire safety, building relationships)
- Hospital/VNA (Focus: US health recommendations)
- Police Station (Focus: safety, building relationships)
- Morton Arboretum (Focus: local environment, seasonal preparedness)
- Cultural Restaurant (Focus: getting to know students)
- Pumpkin Patch/Apple Orchard (Semester 1)/Blackberry Farm (Semester 2)  
(Focus: local environment, seasonal preparedness)
- Little White School Museum (Focus: US history, schooling today)



## Additional Materials

Home	School
<ul style="list-style-type: none"><li>● <a href="#">Family Backpacks from TCM</a></li><li>● Bilingual Books in English and Home Language</li><li>● <a href="#">Language Lizard Pen</a></li></ul>	<ul style="list-style-type: none"><li>● Bilingual Books in English and Home Language for Classroom Library</li><li>● <a href="#">Language Lizard Pen</a></li><li>● Calming Corner Materials</li><li>● Literacy and Math Manipulatives</li><li>● Classroom Furniture</li><li>● Classroom Environment Kit</li></ul>

# Sample Classroom (Grades 1-2)



# Sample Classroom (Grades 3-5)



# Staffing Plan

Elementary	
Grades 1-2	Grades 3-5
1 ESL endorsed classroom teacher (position has already BOE approved)	1 ESL endorsed classroom teacher (position has already BOE approved)
1 TA	1 TA
1 Social Worker (position has already BOE approved)	
1 Newcomer Facilitator and Curriculum Writer	
Summer Curriculum Development Team per Content Area	



**THANK YOU**

**GRACIAS**

**ARIGATO**

**SHUKURIA**

**JUSPAXAR**

**GOZAIMASHITA**

**EFCHARISTO**

**GRAZIE**

**MEHRBANI**

**PALDIES**

**BOLZIN**

**MERCICI**

**TASHAKKUR ATU**

**SUKSAMA**

**EKHMET**

**BIYAN**

**SHUKRIA**

**TINGKI**

**THANK**

**YOU**

**BOLZIN**

**MERCICI**

**DANKSCHEEN**

**SPASIBO**

**SHACHALHUYA**

**NUHUR**

**CHALTU**

**YAQHANYELAY**

**WABEEJA**

**MAITEKA**

**HUI**

**YUSPAGARATAM**

**DHANYABAD**

**AMBA**

**ATTO**

**SPASIBO**

**DENKAUJA**

**UNALCHEESH**

**HATUR**

**LI**

**SAIKO**

**MAAKE**

**SAIKO**

**KOMAPSUMNIDA**

**LAH**

**MERASTANHY**

**GAEJTHO**

**AGUYJE**

**FAKAUE**

**UHALCHEESH**

**SIKOMO**

**MANETA**

**MINMONCHAR**

# Entry Requirements

<b>Elementary</b>	<b>Secondary</b>
Birth Country other than US	
Home Language Survey indicating languages other than English/Spanish at home	
Less than 90 days of enrollment at any US school	
WIDA Screener score below 3.0	

# Exit Requirements

<b>Elementary</b>	<b>Secondary</b>
90 days of enrollment in East Aurora*	

# Assessments

<b>Elementary</b>	<b>Secondary</b>
SEL Screener at entry and exit	
iReady Diagnostic at entry and exit	
Language Arts at entry and exit	



# Secondary Schedule

Content Area	Instructional Routines	Time per Day
Social Emotional Learning	Whole Group Learning Small Group Learning	1 period
Technology	Whole Group Learning	1 period
Language Arts	Small Group Stations High Frequency Words Phonics Read Aloud Shared Writing	2 periods
Math	Small Group Stations	2 periods
Specials	*with grade level peers*	1 period
Lunch with Recess	*with grade level peers*	1 period



# Curricular Resources

Content Area	Elementary Programming	Middle School Programming	High School Programming
Social Emotional Learning	Modified Second Step Units		
Technology	Modified <a href="#">Tech Units</a>		
Language Arts	<p><b>Small Group Stations:</b> Okapi  <b>High Frequency Words:</b> Homegrown Pacing and Activities  <b>Phonics:</b> <a href="#">Words Their Way</a>  <b>Shared Reading:</b> <a href="#">TCM Untold Stories</a>  <b>Shared Writing:</b> Homegrown Writing Units (<a href="#">The Write Track</a>)</p>	<p><b>Small Group Stations:</b> Okapi  <b>High Frequency Words:</b> Homegrown Pacing and Activities  <b>Phonics:</b> <a href="#">Continental Phonics &amp; Word Study</a>  <b>Shared Reading:</b> <a href="#">Saddleback GO! Welcome Newcomers</a>  <b>Shared Writing:</b> Homegrown Writing Units</p>	<p><b>Small Group Stations:</b> Okapi  <b>High Frequency Words:</b> Homegrown Pacing and Activities  <b>Phonics:</b> <a href="#">iReady Phonics for Reading</a>  <b>Shared Reading:</b> <a href="#">Saddleback Welcome Newcomers</a>  <b>Shared Writing:</b> Homegrown Writing Units</p>
Math	iReady		



# Staffing Plan

Elementary		Secondary	
Grades 1-2	Grades 3-5	Grades 6-8	Grades 9-12
1 ESL endorsed classroom teacher	1 ESL endorsed classroom teacher	1 ESL endorsed Math Teacher	1 ESL endorsed Math Teacher
		1 ESL endorsed Language Arts Teacher	1 ESL endorsed Language Arts Teacher
1 TA	1 TA	1 TA	1 TA
1 Newcomer Coach	1 Newcomer Coach	1 Newcomer Coach	1 Newcomer Coach
1 Parent Liaison		1 Parent Liaison	1 Parent Liaison
1 Social Worker or Behaviorist		1 Social Worker or Behaviorist	
1 Newcomer Coordinator / Curriculum Development Team Lead			
1 Summer Curriculum Development Team per Content Area	1 Summer Curriculum Development Team per Content Area	1 Summer Curriculum Development Team per Content Area	1 Summer Curriculum Development Team per Content Area



# Staffing Plan

Elementary		Secondary	
Grades K-2	Grades 3-5	Grades 6-8	Grades 9-12
1 ESL endorsed classroom teacher	1 ESL endorsed classroom teacher	1 ESL endorsed Math Teacher	1 ESL endorsed Math Teacher
		1 ESL endorsed Language Arts Teacher	1 ESL endorsed Language Arts Teacher
1 TA	1 TA	1 TA	1 TA
1 Newcomer Facilitator	1 Newcomer Facilitator	1 Newcomer Facilitator	1 Newcomer Facilitator
1 secretary		1 secretary	1 secretary
1 Social Worker or Behaviorist		1 Social Worker or Behaviorist	1 Social Worker or Behaviorist
1 Newcomer Coordinator			
1 Summer Curriculum Development Team per Content Area	1 Summer Curriculum Development Team per Content Area	1 Summer Curriculum Development Team per Content Area	1 Summer Curriculum Development Team per Content Area



## Current Data

- Students enrolled on or **after first day of school 2024**
- HLS indicate language other than English/Spanish

