



Space Usage at BRS

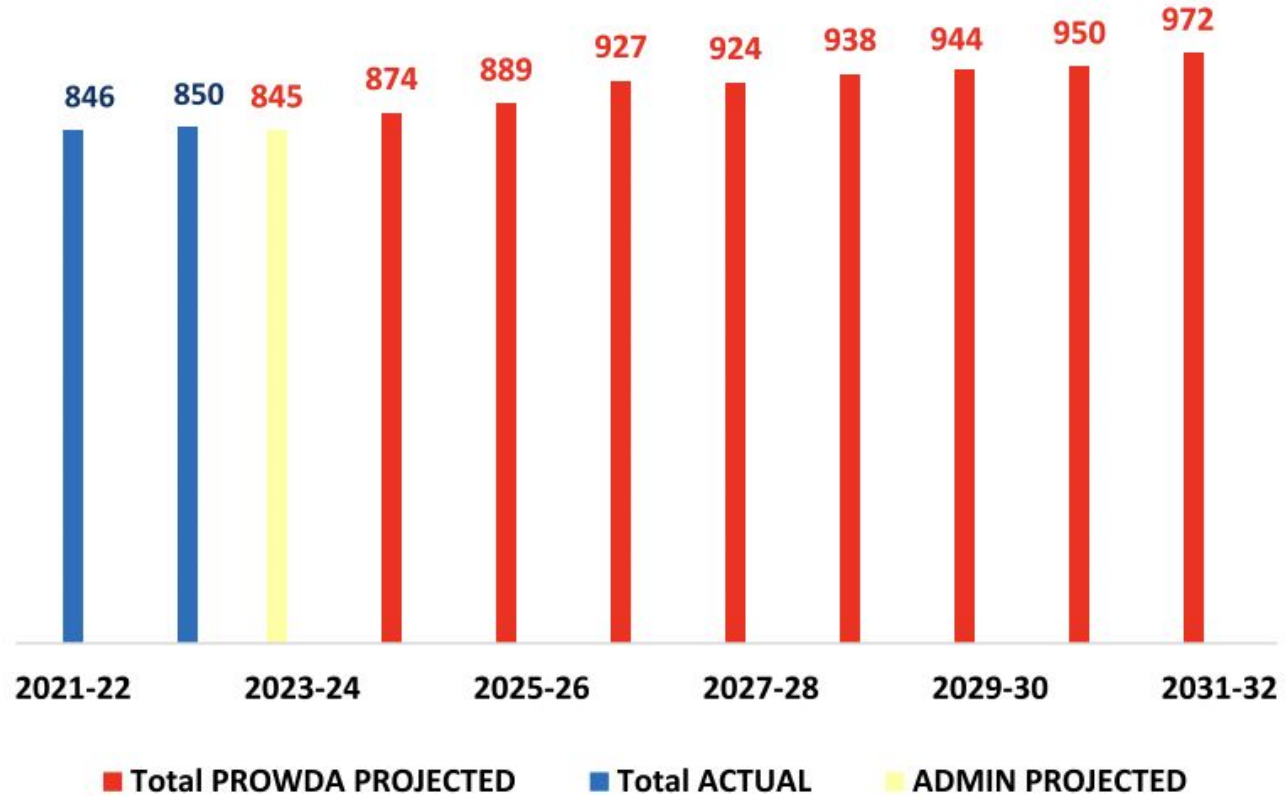
BOE Ad Hoc Committee
Analisa Sherman
March 29, 2023

Current Enrollment (March 1, 2023)

Grade	Current enrollment
Pre-K	23
K	108
1	101 (+ MAG 1 = 121)
2	100 (+ MAG 2 = 119)
3	94 (+ MAG 3 = 114)
4	101 (+ MAG 4 = 120)
5	133
6	126
MAG 1: 20	MAG 3: 20
MAG 2: 19	MAG 4: 19

Total: 864

Future enrollment



Special Education Enrollment

	Total BRS Enrollment	# of SPED Students	SPED Prevalence	Special Education Teachers	Pupil Personnel	Student / Teacher Ratio
FY 2013	744	58	7.8%	9.0	2.5	6.4
FY 2014	766	67	8.7%	9.0	2.5	7.4
FY 2015	785	64	8.1%	9.0	2.5	7.1
FY 2016	775	72	9.3%	9.0	2.5	8.0
FY 2017	781	83	10.6%	9.0	2.5	9.2
FY 2018	842	94	11.2%	9.0	2.5	10.4
FY 2019	843	91	10.8%	9.5	2.5	9.6
FY 2020	838	91	10.9%	11.0	2.5	8.3
FY 2021	816	94	11.5%	12.5	3.0	7.5
FY 2022	850	105	12.4%	12.5	3.0	8.4
FY 2023	851	118	13.9%	13.5	4.3	8.7



A walk around the building

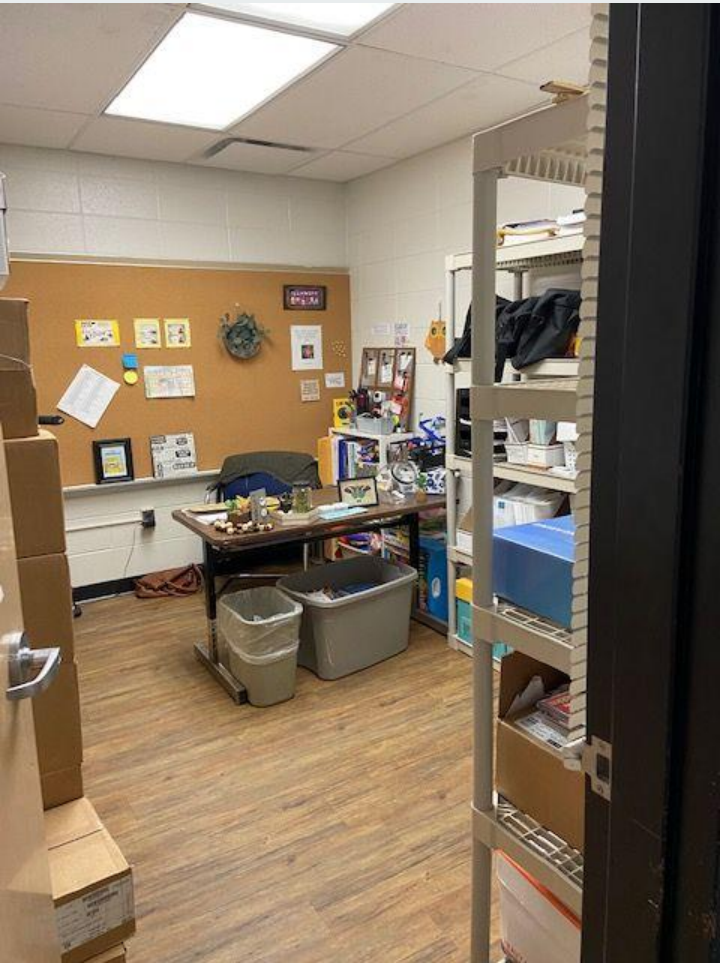
Areas worth noting:

- ❖ Staff sharing spaces
- ❖ Not enough space for current programming
- ❖ Re-purposing of spaces
 - Fitness room: OT/Health
 - Rotunda
- ❖ Lack of storage
- ❖ No space for whole-school gatherings (a key part of Responsive Classroom)
- ❖ Changing needs of students



Shared spaces by staff. Lack of staff lounges. (Impact on Extended Day-stove is no longer accessible.)

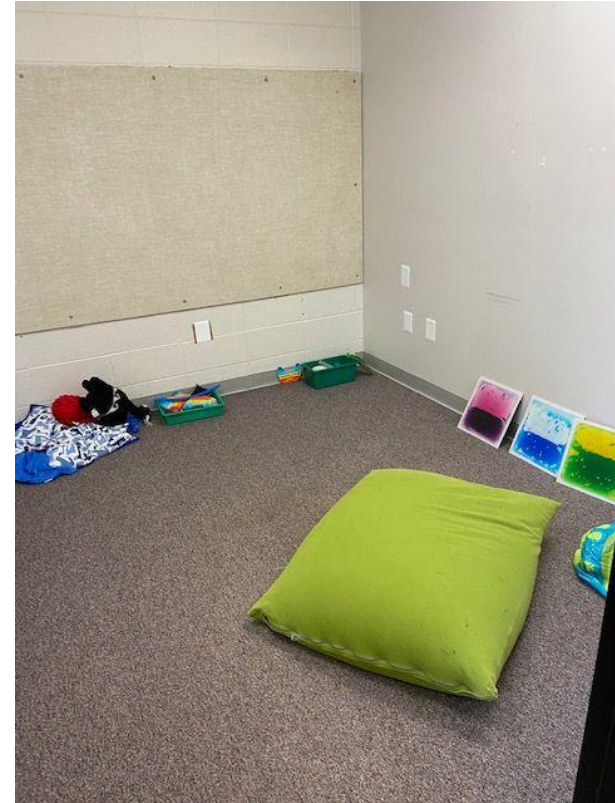




Instructional spaces and offices.



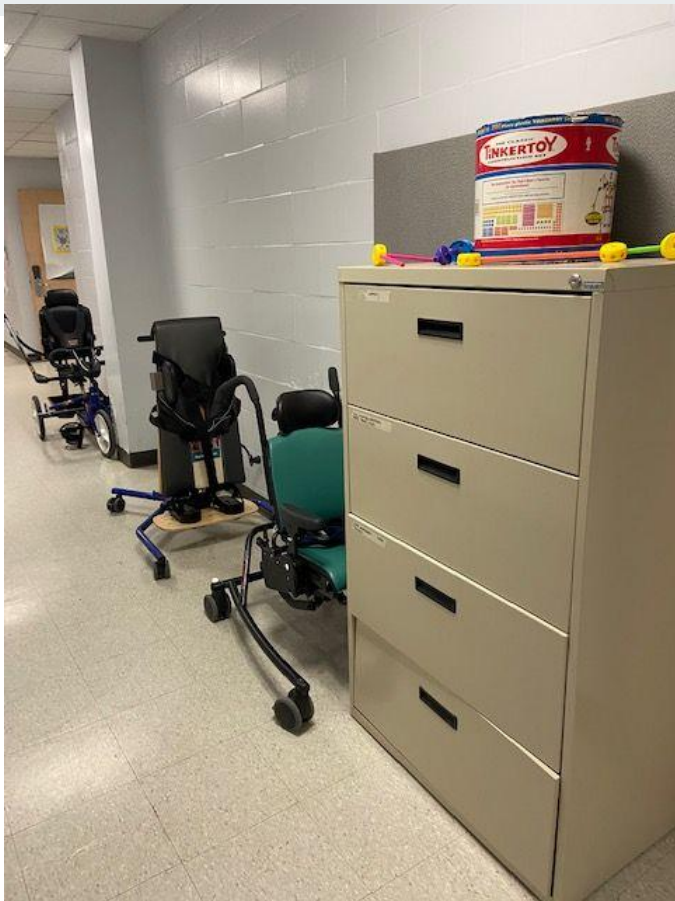
Classroom spaces being used to support student needs.





**Limited storage.
Fitness room used by multiple staff - repurposed.**





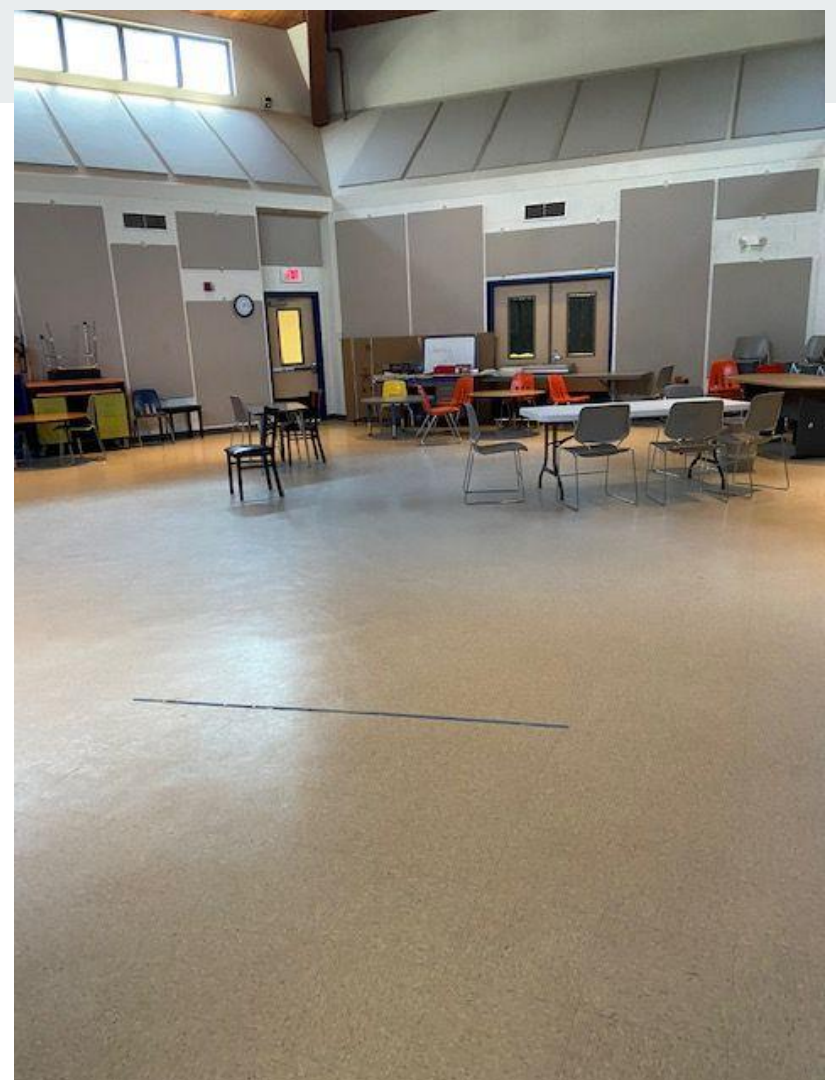
Lack of storage means equipment is stored in hallways



**Only one staff lounge for over
100 staff members.
Located in south school.**



**Rotunda is an example
of a space that is
repurposed.**



Not enough instructional spaces or small spaces for current programming.

- Music on a cart
- Spanish classroom





Questions?

Thank you!