



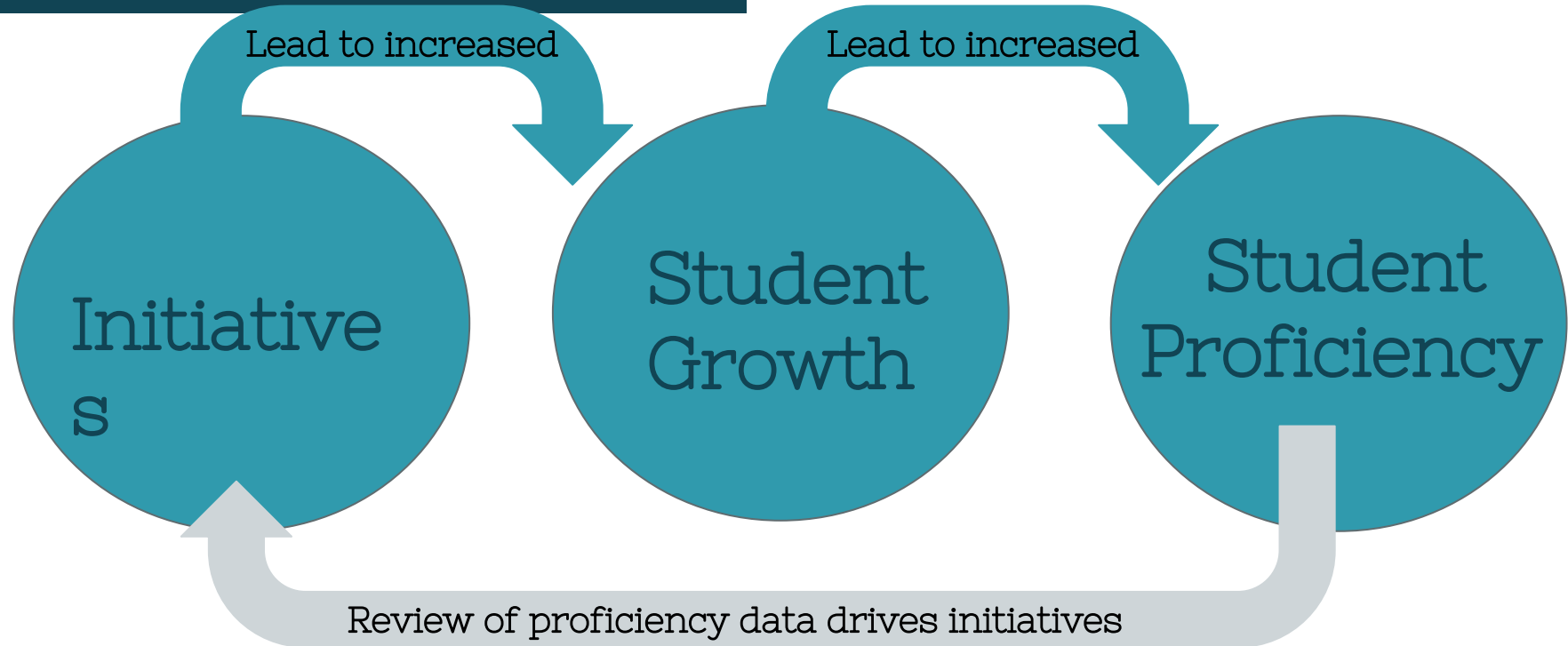
Okemos Public Schools District Data Review

Stacy Bailey, Asst. Supt. for Curriculum and Instruction

Dr. Lara Slee, Director of Diversity, Equity & Inclusion

May 2025

District Goal Setting Process



Fall

- MAP Reading Fluency (K, 1)
- MAP Growth Reading (2-8)
- MAP Growth Math (K-8)



- Present Spring State Data & Set Achievement Goals
- Present District Benchmark Data & Set Growth Goals

Winter

- MAP Reading Fluency (K, 1)
- MAP Growth Reading (K-8)
- MAP Growth Math (K-8)
- BASC-3 BESS (3-12)



- Present Benchmark Data & Monitor Growth Goals
- Monitor Progress of District Initiatives

Spring

- MAP Reading Fluency (K, 1)
- MAP Growth Reading (K-8)
- MAP Growth Math (K-8)
- BASC-3 BESS (3-12)



- Present Benchmark Data & Evaluate Growth Goals
- Evaluate Success of District Initiatives

Growth

Benchmark Assessment Data

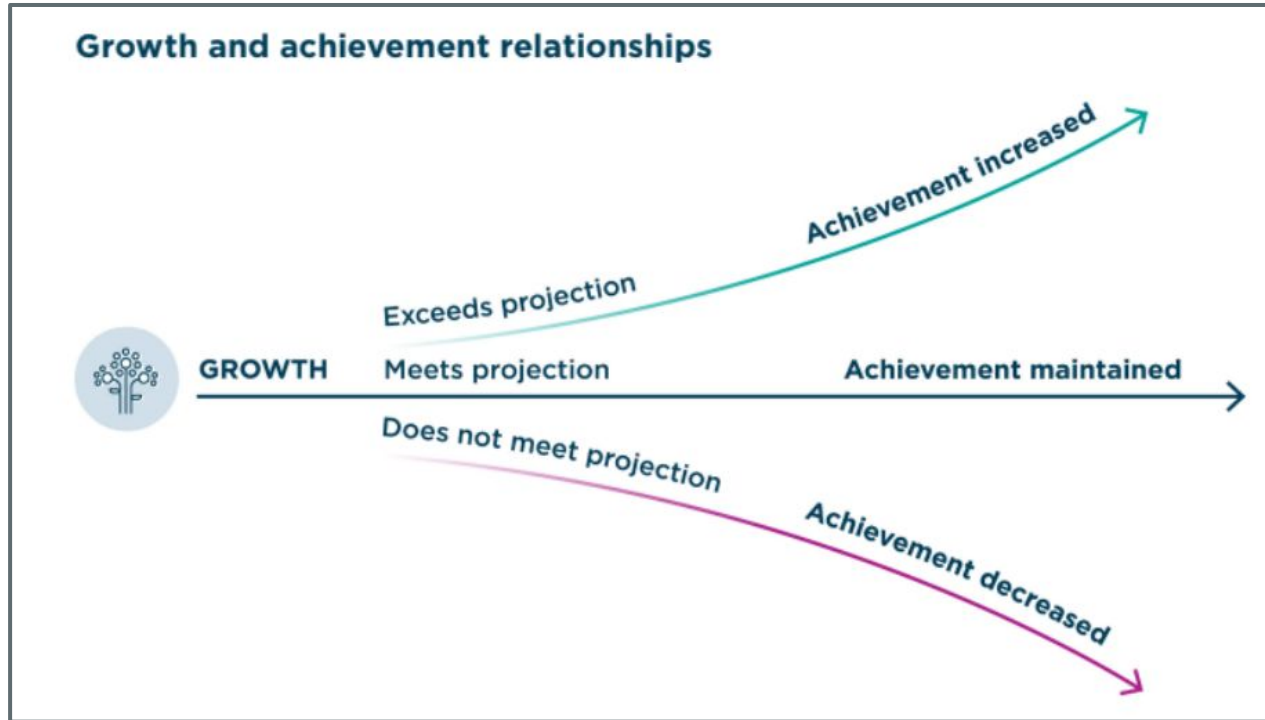
NWEA Reading Fluency

NWEA MAP Growth– Reading & Math



Growth

Video: [NWEA Defining Growth and Proficiency](#)



Growth Data & Goals- NWEA

If students have an increase in expected growth on NWEA, then it will lead to an increase in student proficiency on M-STEP.

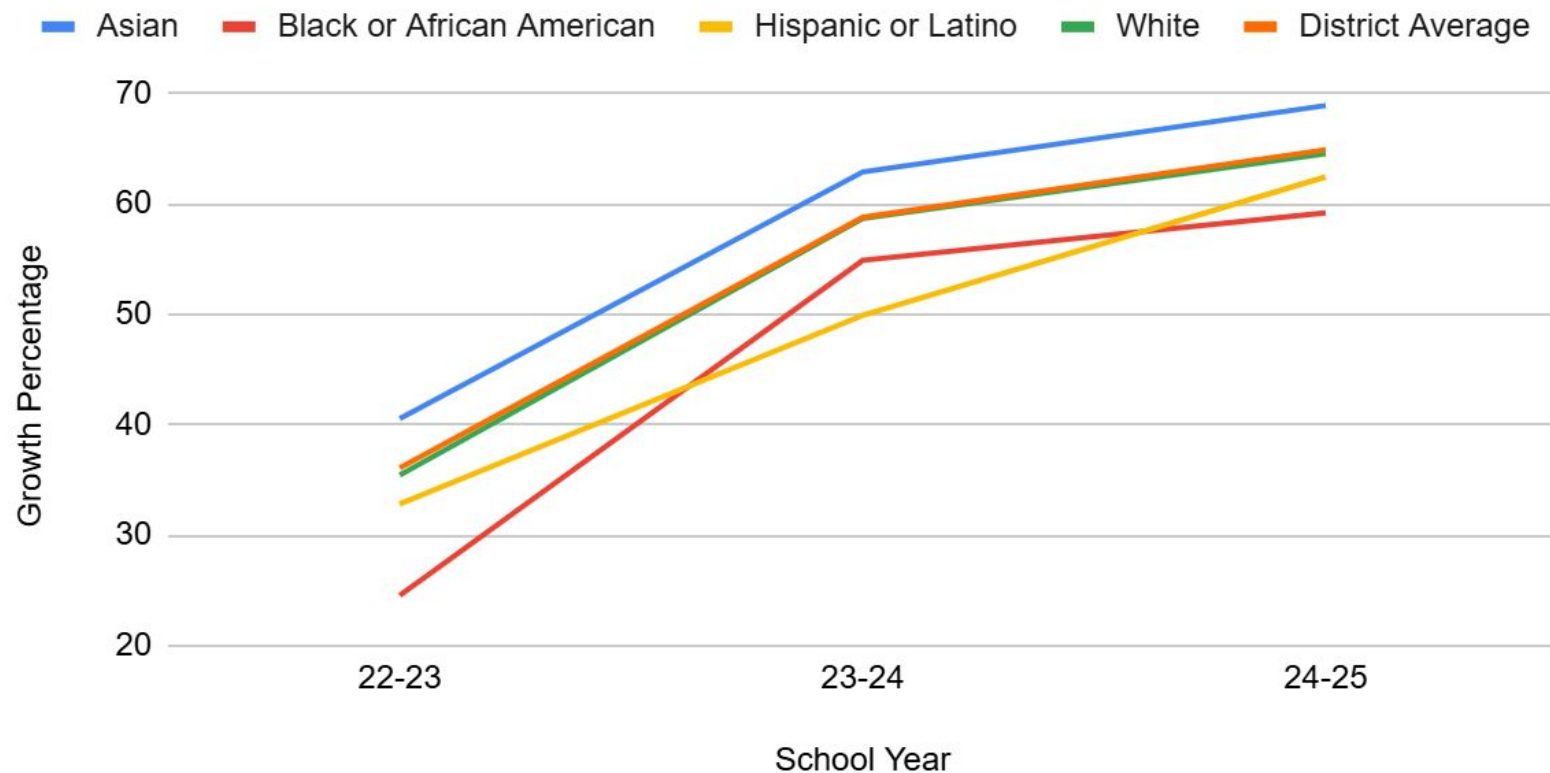
	Fall-Spring 22-23 Actual Data	Fall-Spring 23-24 Actual Data	Fall-Spring 24-25 Goal	Fall-Spring 24-25 Actual Data
K-10th grade students that met their expected growth in literacy	43.4%	54.5%	62.5%	53.1%
K-10th grade students that met their expected growth in math	36.3%	58.5%	66.5%	64.9%

End of Year Growth Data

Fall-Spring	Literacy % Met Expected Growth	Math % Met Expected Growth
All	53.1%	64.9%
Economically Disadvantaged	48.5%	56.5%
Multilingual Learner	54.3%	64.9%
Special Education	46.1%	56.6%
Asian	55%	68.9%
Black or African American	48.4%	59.1%
Hispanic	51.9%	62.5%
White	53.3%	64.6%

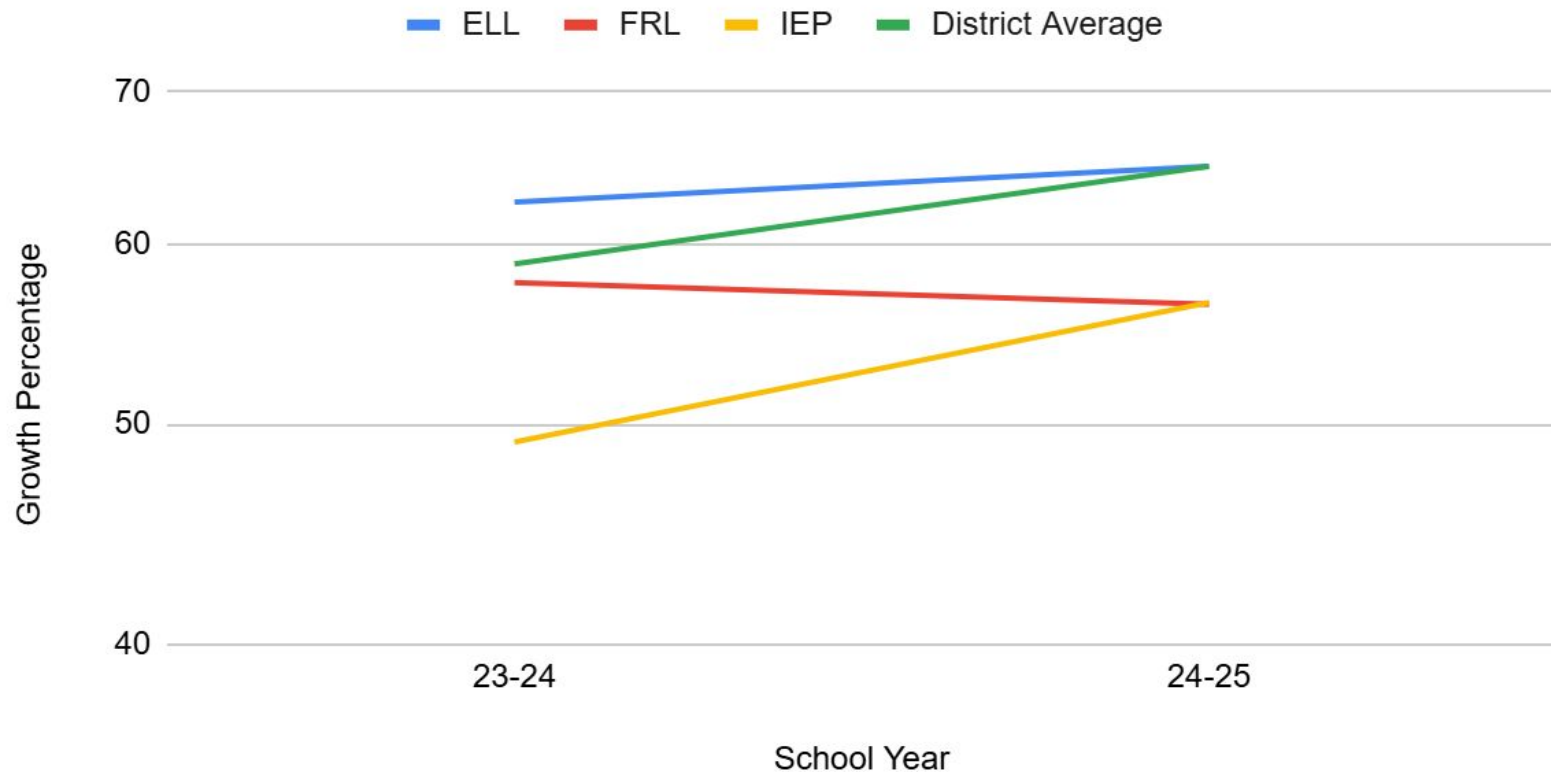
Percentage of Students Meeting Expected Growth in MATH

NWEA Map Growth



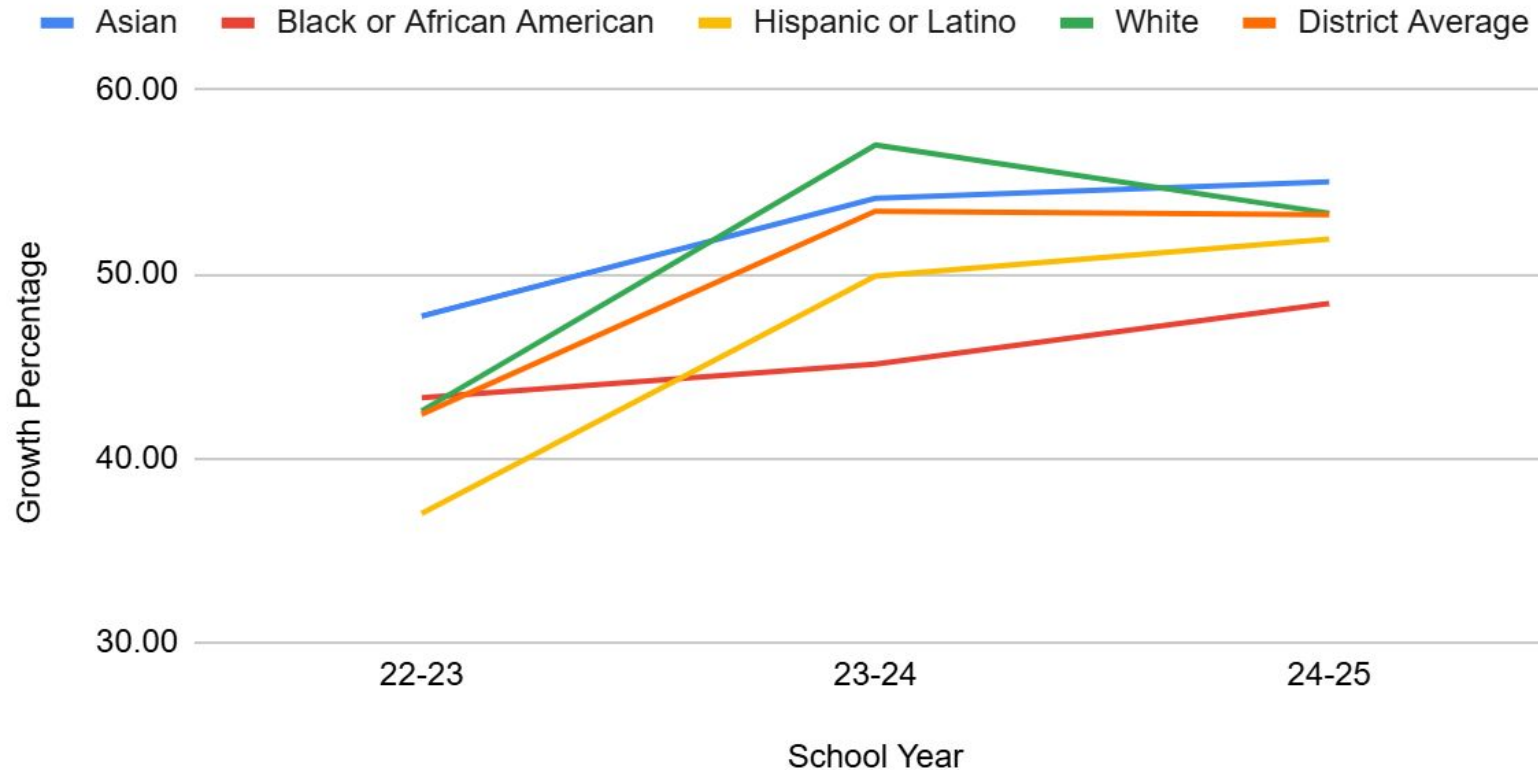
Percentage of Students Meeting Expected Growth in MATH

NWEA Map Growth



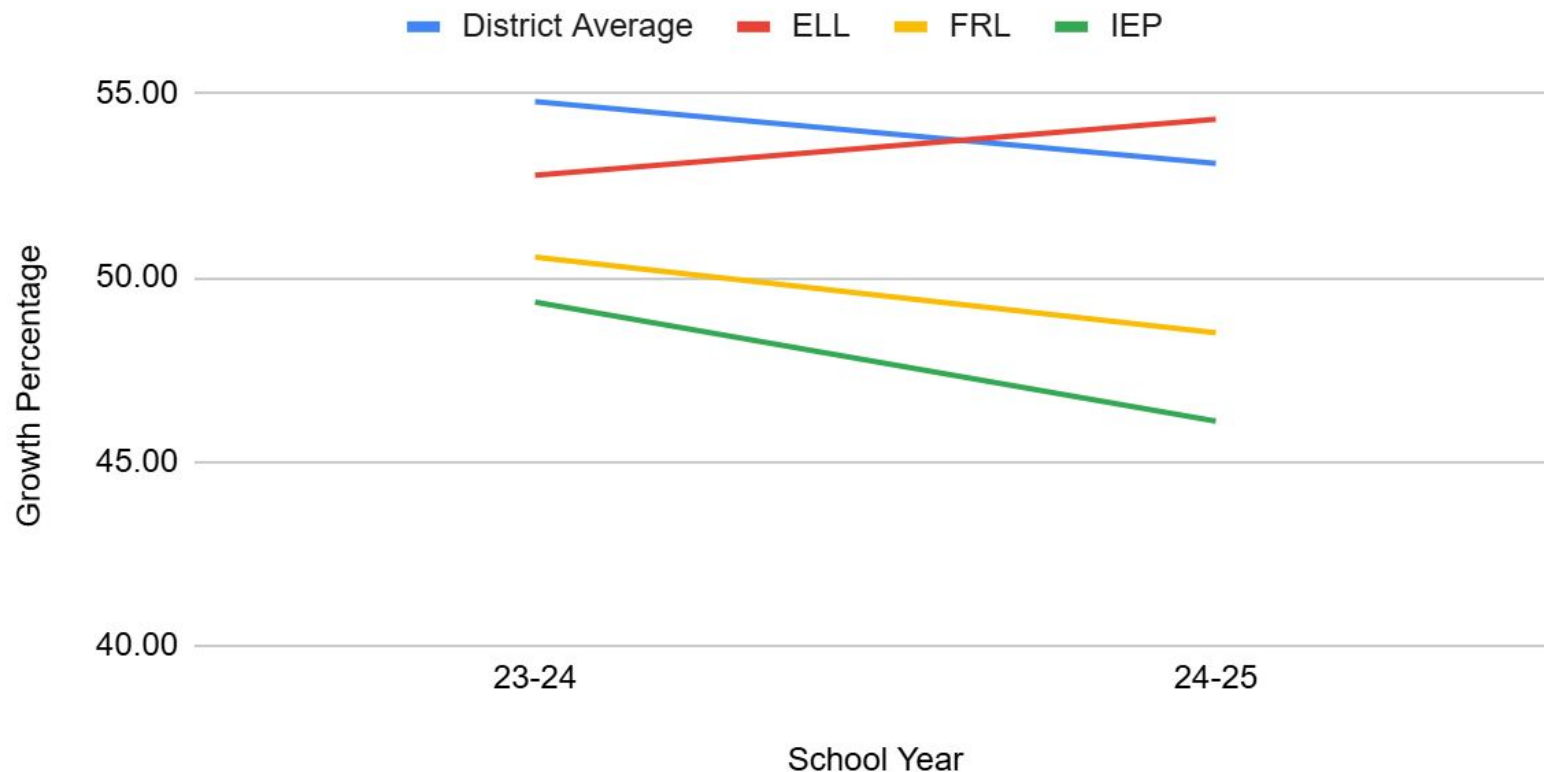
Percentage of Students Meeting Expected Growth in ELA

NWEA Map Growth



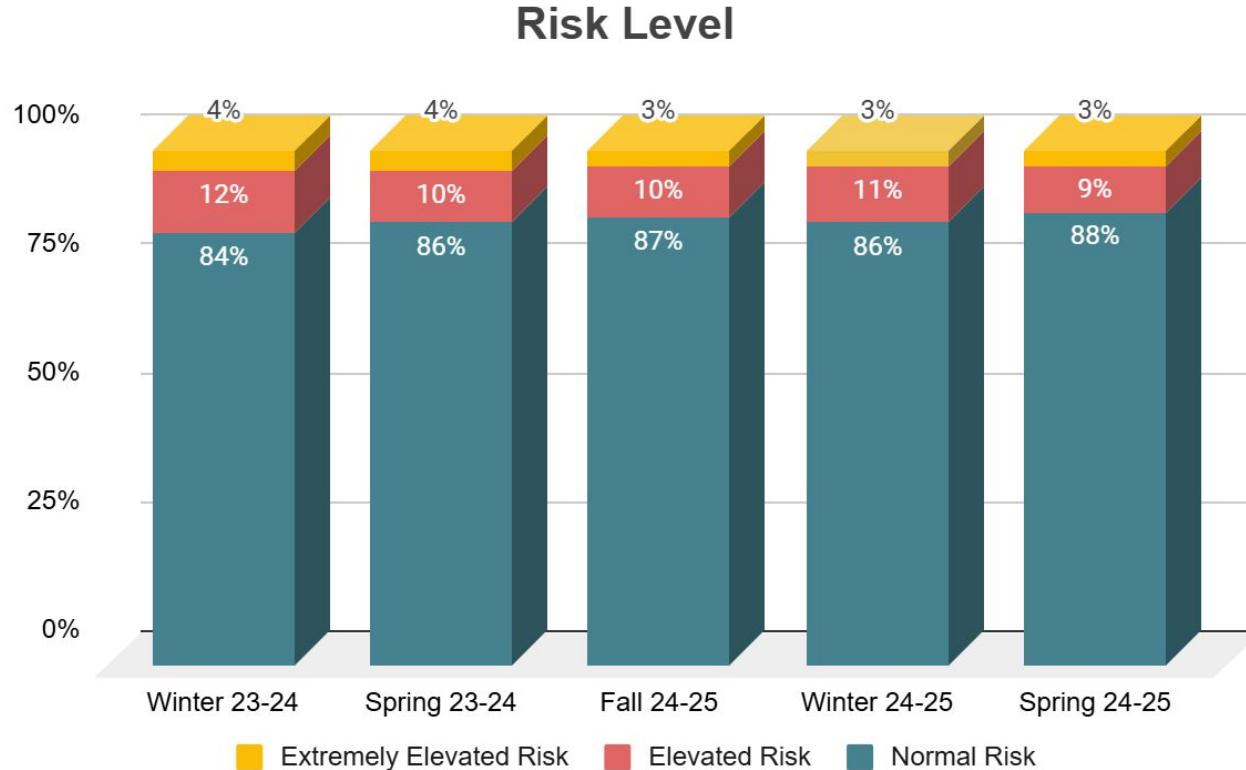
Percentage of Students Meeting Expected Growth in ELA

NWEA Map Growth



Social Emotional Learning

BASC-3 BESS results



Initiatives that have worked/are working

Students

Provide Learning Supports:

- Woof Pack
- New furniture
- Updated social studies curriculum
- Updated science curriculum



Educators

Improve & Enhance Instruction:

- OG training
- LETRS training
- Standards based grading practices
- Increase in multilingual professional learning
- Department learning days



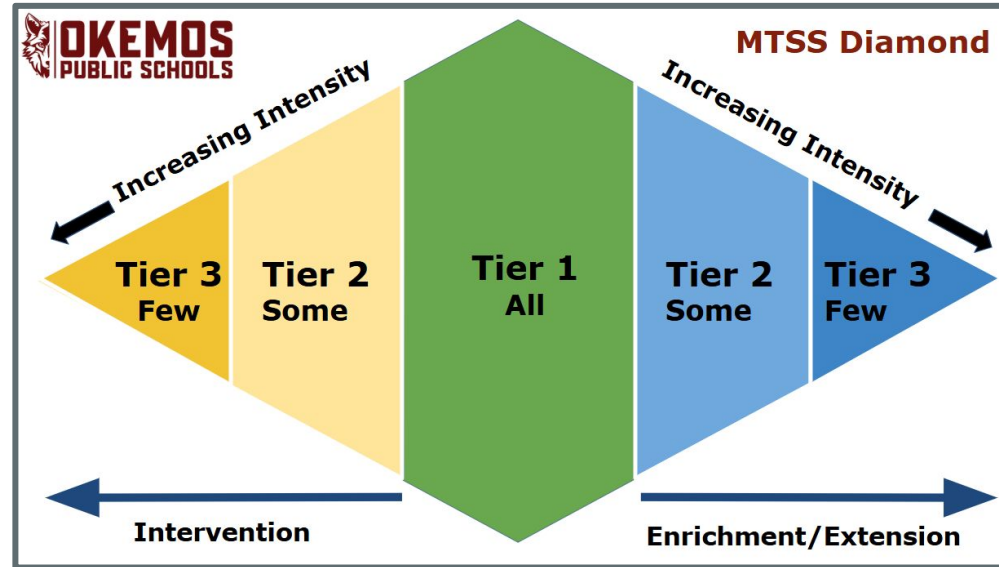
Organization

Systemic & Aligned Support:

- Multi-Tier System of Support (MTSS) District Committee
- District Computer Science committee
- OHS Testing Center

MTSS Committee Updates

- 46 members
- 5 full days
- Committee Work:
 - Intervention Inventory
 - Assessment Inventory
 - Process Maps
 - Handbook



Supporting student success by meeting them where they are.

Current/Continued Supports & Initiatives

Students

Provide Learning Supports:

- Universal accommodations
- K-4 SEL Curriculum
- After school tutoring
- Summer school & tutoring



Educators

Improve & Enhance Instruction:

- Universal Design for Learning through Assessments
- PreK-5th Literacy PD
- Multilingual learning PD
- K-4 Social Studies Review
- 5-6 Standards Based Grading

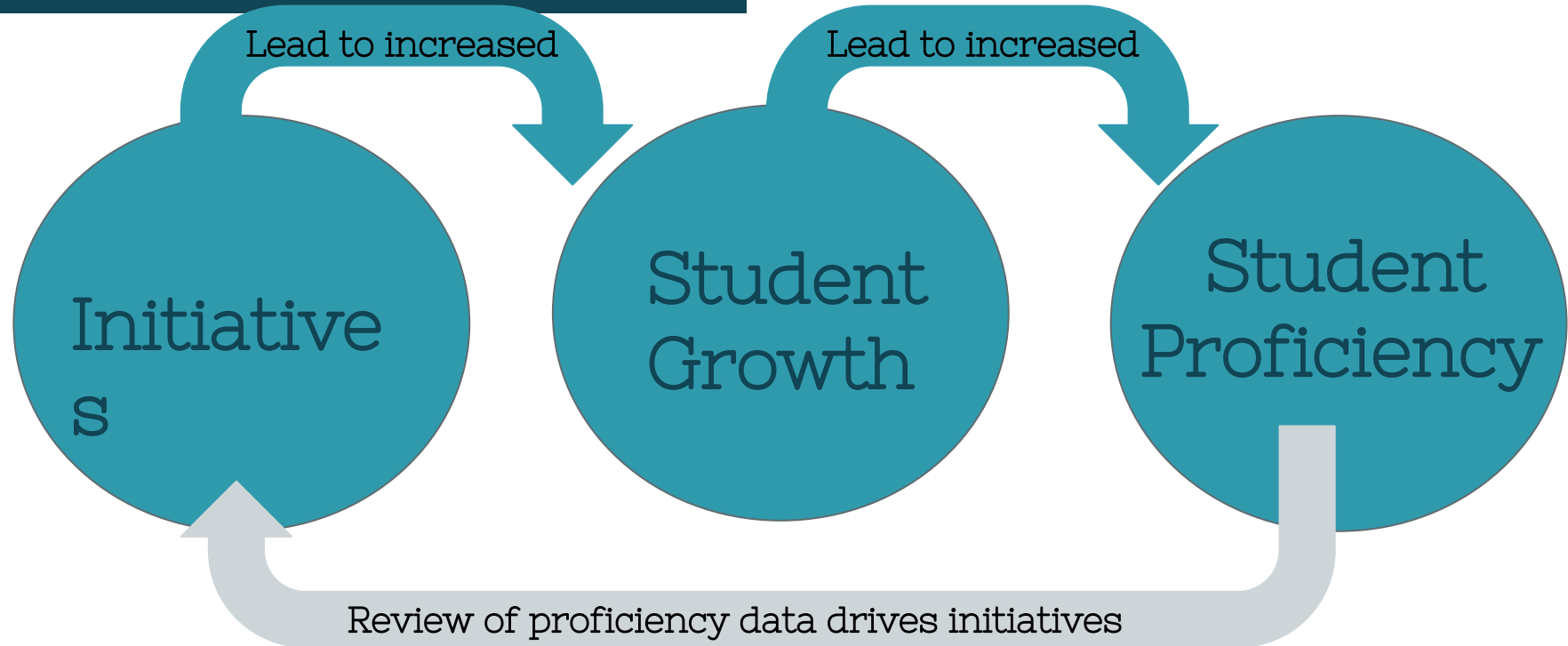


Organization

Systemic & Aligned Support:

- Instructional coaching model
- Homework alignment
- 5th-12th department vertical alignment
- Intervention analysis
- OHS Academic Growth Day
- Multilingual Learners Committee

District Goal Setting Process



Next Steps:

- District MTSS Committee will review spring data to recommend 25-26 District goals
- Building school improvement teams will review spring data to determine 25-26 building goals
- Professional Development & training plan will be developed based on:
 - Strategic Plan
 - District Data & Goals
 - Building Data & Goals