



Community Education Network
Together we can make a difference

Duluth Community Education 2009-2010 Annual Report

Independent School District 709

Celebrating 40 years

One of the first programs established in Minnesota, Duluth Community Education has been an integral force in the quality of life here in ISD 709 for the past 40 years.

We remain true to our mission to provide lifelong learning opportunities and services for residents of all ages.

Goals

- Maximize the use of school facilities.
- To promote and develop community support for E-12 programs.
- To provide lifelong learning opportunities to all members of the community.
- Respond to community needs and use community resources most efficiently.

Funding: Community Education is funded primarily through the Community Services portion of the local school levy and categorical state aid. In addition, user/class fees help leverage the dollars received from the state to support programs and new initiatives. Community Education money is separate from the General Fund which services K-12 and Co-curricular.

Duluth Community Education INDEPENDENT SCHOOL DISTRICT NO. 709 • DULUTH, MN 55802

Celebrating 40 Years!

2010 WINTER SCHEDULE

Check out our online registration website at www.duluthcommunityed.org
 email: communityeducation@isd709.us

IN THIS ISSUE!
OVER 200 CLASSES TO CHOOSE FROM!
 WINTER FUN FOR THE WHOLE FAMILY!
 ARTS & CRAFTS • HOBBIES • AQUATICS
 COMPUTERS • TECHNOLOGY • DANCE • MUSIC
 FINANCE • HEALTH & WELLNESS • LANGUAGE

NEW! Pull-Out Section
LOOK INSIDE FOR NEWS ABOUT DULUTH PUBLIC SCHOOLS

REGISTER TODAY ONLINE
www.duluthcommunityed.org

Go to page 15 for registration form and information on signing up for your Community Ed classes.

PROJECT ACCESS
 Class Accessible to both Youth with Disabilities & Special Needs. Continue your educational opportunities through winter months of Aquatic Entry Class and Programs designed to meet your specific needs. Classes are available through online registration and support services are available upon request.

FREE SE PROJE MARKKS
 Available with select Aquatic Entry Class. *Additional information available upon request.

ACCESSIBLE
 Wheelchair accessible. *Additional information available upon request.

DULUTH COMMUNITY EDUCATION
OPEN SWIM
LIFEGUARD SUPERVISED
 \$1 per person per session. Perfect for families. \$2 per session. Bring your own swim cap and towel. Call for if your group is for more persons. Group and individual packages available. **CALL FOR POOL RENTAL & RATES CLOSED ON HOLIDAYS**

WOODLAND COMMUNITY SCHOOL
 8-8:30 PM - Wednesday - 1081 Jan. 6, 2010, no session 1017
 12-12:30 PM - Thursday - 1081 Jan. 7, 2010, no session 1017
 12-12:30 PM - Friday - 1081 Jan. 8, 2010, no session 1017
 12-12:30 PM - Saturday - 1081 Jan. 9, 2010, no session 1017
 12-12:30 PM - Sunday - 1081 Jan. 10, 2010, no session 1017
 12-12:30 PM - Monday - 1081 Jan. 11, 2010, no session 1017
 12-12:30 PM - Tuesday - 1081 Jan. 12, 2010, no session 1017

ASTRONOMY FOR EVERYONE
WITH BOB KING
 Marshall W. Alcorn Planetarium, UMD
 Class #17
 4 Weeks • 7:00-8:30 p.m. • Class #1900
 Sundays • February 7 - February 22, 2010
 If you are a local resident who would like to become a member with the planetarium, please contact Bob King at 507-253-4111

COMMUNITY EDUCATION OFFICE LOCATIONS
 Community School Office Hours:
 Monday-Thursday 12:00 - 5:00 p.m. • Friday 9:00 a.m.-5:00 p.m.
 1000 W. 15th Street, Duluth, MN 55812
 210 North First Avenue East 336-6578
 610 Commercial Avenue East 336-6578
 175 Central Avenue 336-6578
 Morgan Park Community School 636-4515
 1915 19th Avenue West 720-2171
 800 East Central Avenue 720-2171
 Woodland Community School 720-7482

Inside this issue:

Adult Programs	2
Community/Citizen Involvement	2
Youth Programs	3
Early Childhood/Family Programs	3



2009-2010 Participant Information	
(Based on turnstile count. Data in the 2009-2010 Minnesota Department of Education Report)	
Program	Participants
Adult Enrichment	6,467
Youth Enrichment/Aquatics	1,353
Driver Education	411
School-Aged Child Care	793
Youth Development/Youth Service	11,400
Adults with Disabilities-Project Access	2,462
Adult Basic Education/GED	897
Early Childhood Family Education/Pre-K	4,924
Community Concerns/Special Events	24,732
Community Use of School Facilities	338 user groups/93,216 participants

Adult Programs

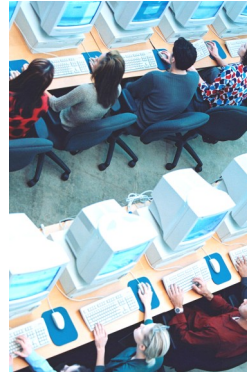
Continuing the Path of Lifelong Learning

Adult Enrichment: Hundreds of evening classes for adults are offered each quarter including summer. These classes provide a diverse source for lifelong learning opportunities enriching lives and maximizing potential for learners of all ages.

- *40% of participants register and pay for classes online at www.duluthcommunityed.org*
- *Over 300 individuals receive important part-time employment as community education instructors, pool staff, and child care workers - all revenue which is collected from user fees.*
- *Over 300 online classes are now available through the Ed2go online learning center.*

Adult Basic Education: Serves people ages 16 and older who are not enrolled in any other formal education program with GED preparation, family learning, English As A Second Language (ESL) classes, and drop out recovery.

- *Citizenry and language classes help break down barriers for diverse learners from 20 different countries.*
- *ABE occurs not only at ALC, but with our community partners at NERCC, St. Louis*



Co. Jail, Proctor and Hermantown, Lake Superior College and the Duluth Workforce Center.

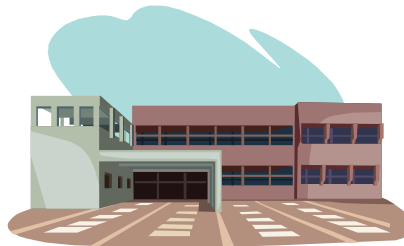
Project Access: Offers a wide variety of educational, recreational enrichment and events for individuals with disabilities or special needs.

- *Helped 900 district students learn about disabilities through our Kids On The Block puppet program.*
- *In addition to specialized classes and activities, variety of inclusion support is offered to adults to allow for participation in regular community education programs and activities.*

Community/Citizen Involvement

Community Use of School Facilities: CE coordinates the use of buildings district wide by hundreds of individuals, community groups, agencies, churches and sport associations.

- *Over 300 user groups with over 93,000 participants accessed district facilities.*
- *Implemented a new online reservation system including a district wide calendar viewable by school athletics, maintenance and administrators.*



Partnerships: Community Education is an effective vehicle for maximizing community resources by engaging individuals and organizations to create partnerships that make efficient use of community resource to address local needs.

- *This past year, the district and city were successful in forging a joint powers agreement to begin looking at joint use facilities and services initiatives.*
- *Continue to partner with over 75 community groups, organizations and agencies.*

Citizen Advisory Councils and Affiliations

- Early Childhood City-Wide Advisory Council
- Service-Learning Duluth Committee
- ISD 709/City of Duluth Joint Powers Committee
- MCEA-Minnesota Community Education Association
- MnSACA— Minnesota School Age Child Care Alliance

- ABE Consortium— Duluth, Proctor, Hermantown
- MDTSEA— Minnesota Driver and Traffic Safety Education Association
- CEND-Minnesota Community Education Network on Disability
- MnAFEE— Minnesota Association for Family and Early Education



Youth Programs

Creating Building Blocks for a Happy, Healthy Life

Kid Connection: A school age child care program offers quality child care for children in grades K-6 whose parents work or attend school. Staffing and activities are provided before and after school, and summer.

- Parents are now able to pay for and manage their child care accounts online.
- Students participated in 66 field trips or special activities to 45 locations providing memorable community learning experiences.

Aquatics: District pools are operated eleven months of the year with hundreds of children and families receiving swim instruction throughout the year, including summer.

- Adults enjoy such pool programs as kayaking, water aerobics, SCUBA, snorkeling and more.
- Coordinate public access to pool facilities through open and lap swims, private party rentals and community swim clubs/teams.

Driver Education: Combines classroom and behind the wheel instruction with a variety of multimedia learning experiences, community resource presentations and a parent involvement component.

- Features 32 hours of classroom instruction and 6 hours of behind the wheel instruction by certified public school teachers.
- 23 classes offered at high schools during the school year and summer.



Youth Enrichment and Recreation: Classes and activities are offered after school and summer at schools throughout the district. Classes include arts and crafts, music, language, technology, recreational

activities and outdoor learning.

- At Morgan Park, students learn about environmental assessment, land stewardship and habitat improvement through the Environmental Service Club.
- Collaboration with City of Duluth Parks and Recreation and other youth service agencies addressed Out of School Time program needs and gaps of service.

Service Learning/Youth Service/Youth

Development: Involving young people in community service, because it ties helping others to what they are learning in the classroom.

- Involved over 27 Service-Learning teacher representatives focusing on engaging learners in successful initiatives district-wide.
- In partnership with local community agencies and higher education, Service-Learning Duluth hosted a regional workshop at the University of Wisconsin-Superior.
- www.servicelearningduluth.org

Early Childhood/Family Programs

Preparing Children for Success in School and Life Beginning at Birth

Early Childhood Family Education (ECFE) is a program of information and support for parents and their young children from birth through 3 years old, and is located in four family centers and various community satellite sites.

School Readiness/Pre-K: Provides experiences in creative expression, social-emotional learning, free play and independence for four year olds. Two and three-day per week programs available at five elementary schools.

- The ECFE and Pre-K programs have combined staff and community resources. The goal is to efficiently deliver the programs, reach more families and collectively advocate for early education programs.
- Ongoing collaborations with Early Childhood Special Education, Headstart and community agencies allow ECFE to provide programming for at risk pre-K children to ensure school success.



Reaching families during a critical learning period to better prepare them for school, thereby closing the achievement gap





Engaging the Community, One Person at a Time...

**146,655
Connections**



**1
Delivery
System**



**Duluth
Community
Education**